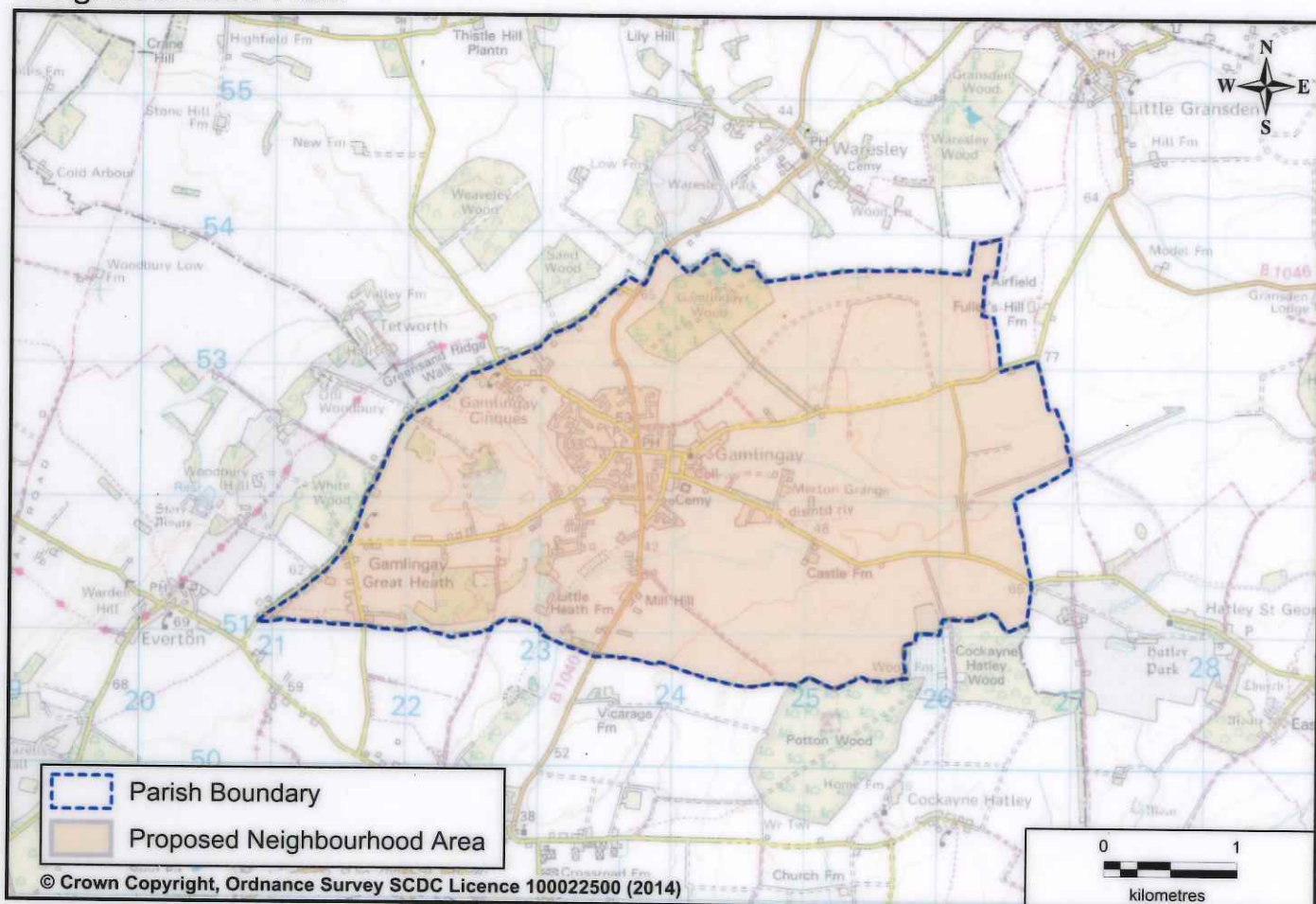


Your Area Your Say



Gamlingay Neighbourhood Plan

Gamlingay Parish Council has made an application to South Cambridgeshire District Council to designate a Neighbourhood Area, for the purposes of developing a Neighbourhood Plan.



What is a Neighbourhood Plan?

A community-led initiative giving communities power to prepare a planning document that includes a shared vision for their neighbourhood. These plans can set out policies on the development and use of land in a parish or 'neighbourhood area' and have formal weight in deciding planning applications.

Your Opportunity to Comment

If you wish to make comments you can do so by:

Website: www.scambs.gov.uk/neighbourhood-planning

Email: neighbourhood.planning@scambs.gov.uk

Post: Jo Mills, Director of Planning and New Communities,
South Cambridgeshire District Council, Cambourne Business Park,
Cambourne, Cambridge, CB23 6EA

Comments should be received no later than 5pm Friday 16 January 2015