

CASTLE BROMWICH RAMBLERS

SURREY WALKING HOLIDAY

29th April – 2nd May 2016

Introduction

We will be staying in the Anchor Hotel – www.anchorhotel.co.uk, which is situated in Church Square in old Shepperton, close to the River Thames.

Postcode: TW17 9JZ

Telephone: 01932 242748



Shepperton was first mentioned in 959 and its name means Shepherd's habitation. In Domesday Book it was called Scepertune and had 25 households.

The coming of the railway in 1864 led to the development of the present day village and urbanisation as a commuter settlement for London – 15 miles away.

Originally in the County of Middlesex, (which is still the postal county), it became part of Surrey in 1965 when the Greater London Council absorbed most of the rest of Middlesex.

A number of poets lived here in the 18th Century including Thomas Peacock and Percy Shelley, whilst Canaletto and Turner painted local river scenes.

Lord Nelson's mistress, Lady Hamilton, lived in what is now Halliford (private) School.

Itinerary

FRIDAY 29th April

Travel to Runnymede (details on page 6)

The Memorials Walk – Runnymede (3 miles)

Postcode: TW20 0AE

The walk will start at **1.00 p.m.** (may be later if delays on the journey)

Starting at the National Trust Café, we will visit three memorials - Magna Carta, JFK and the RAF.

Look out for other items that are commemorated.



We will cross the meadow to the Magna Carta memorial. This commemorates the sealing of the Great Charter by King John in 1215. We then ascend a partly stepped path to the JFK memorial. This is set in an acre of land given to the USA in memory of the assassinated President.

Continuing on a steady climb up Parsons Hill, we will head for the Air Forces Memorial. From here there are views over a wide area, including Heathrow Airport and some of London's huge reservoirs. We will then descend, crossing a causeway across a lake, to the River Thames. The final section follows the Thames Path back to the Café, where you may want to partake of refreshments before continuing to the hotel.

Travel to Shepperton to Anchor Hotel and book in.



SATURDAY 30th April

Travel Details will be issued on the day

Box Hill (Surrey Hills) Walk – 5 miles with a 7 miles option Postcode: KT20 7LB
Box Hill is owned by the National Trust. It is part of the **Surrey Hills Area of Outstanding Natural Beauty** which covers part of the chalk North Downs

The walk starts from the Visitor Centre where there are toilets and refreshments. It will take the form of a Figure of Eight, giving options of finishing at lunch or continuing for a further 2 miles down to the River Mole and back.

Morning Section - 5 miles

To start with we will head north on level tracks through light woodland. At Broadwood Tower, there are lovely views across the Downs. There will then be a steep, stepped descent, before heading east through woodland and field edges. On reaching a lane there will be two steady, but moderate climbs to an Outdoor Education Centre. Turning south the walk takes us along tracks and a lane to Box Hill village. The final section follows the North Downs Way. It involves quite a steep descent*, then a short stepped climb before levelling out and taking us to a Viewpoint looking south. From here we will return to the nearby Visitor Centre for lunch.

**For anyone wanting a more level walk on this section the road can be followed to the Viewpoint.*



Optional Afternoon Section - 2 miles

After lunch, for those who wish to, we will follow the Stepping Stones Walk, which goes via the Viewpoint then drops down 275 steps to the River Mole. Depending on the river level, we can cross by the stepping stones or by a footbridge, before following the riverside meadow to Burford Bridge. There is then a steady climb with open views back to the Visitor Centre, passing the 200 year old fort en-route.

SUNDAY 1st May

Travel details will be issued on the day

Royal Windsor Walk (7 miles with a 3 mile option) Postcode: SL4 1QG

The first part of the walk takes us along Windsor's riverside with views across to Eton and its meadows. We will then follow quiet back streets of the town passing shops, terraces and some fine houses before heading to the edge of the Great Park.



Town Walk – 3 miles

From here the shorter route will follow the paved Long Walk towards the castle, then into the town, where there are cobbled streets, the characterful Royal Windsor Shopping Centre, plenty of places to eat and browse around, and the riverside.

If anyone wishes to have a tour of the Castle, admission is £20 (£18.20 for Concessions). The tour takes about 1 ½ hours.



Park Walk – 7 miles

The longer route will follow the paved Long Walk deep into the Great Park, steadily ascending through the deer park to the Statue at the top. This will be the lunch stop. There are extensive views to the castle, across the Thames Valley and into London (you might even be able to spot Wembley Stadium in the distance). The return will go through light woodland and follow The Gallop (although horses aren't allowed here), before returning along the Long Walk towards the castle then into the town, walking along the shortest street in England.

There should then be time to explore the town, where there are cobbled streets, the characterful Royal Windsor Shopping Centre (set in the old railway station), plenty of places to eat and browse around, and the riverside.

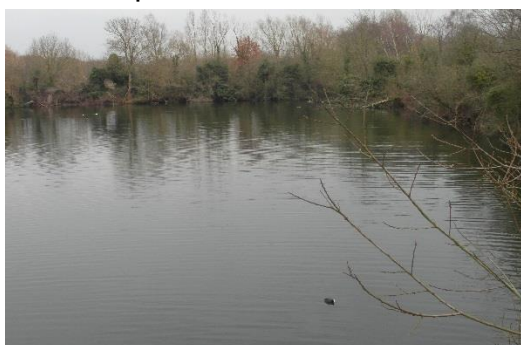
MONDAY 2ND May

Middlesex Lake District walk – 4 miles

This walk will start when we have booked out of the hotel.

The Thames Valley has many current and former gravel workings, with a number around Shepperton, hence the title of this walk. However, unlike Cumbria there are no mountains – indeed it is **very flat**.

The walk skirts around the cemetery and a playing field, then goes through copses on the edge of the village to reach the lakes. These were originally gravel workings and now provide nature reserves and facilities for sailing.



We will cross Dumsey meadow, the sole remaining natural meadow in the Surrey part of the Thames Valley. From here the walk follows part of the 194 mile long **Thames Path** to Shepperton Lock and Ferry before returning to the hotel. You may want to have a coffee etc. before setting off on the journey home.

Travel details will be issued on the day

.....

FURTHER INFORMATION

Evening Meal

This will be at 6.30 pm. and will consist of 2 courses.

A 3rd course is available at an extra cost of £3 per meal.

Breakfast

On Saturday and Sunday breakfast is served from 8.00

On Monday it is served from 6.30.

Rooms

All rooms are upstairs. Due to the fact that the building is very old there is no lift.

Car Park

There is a car park at the rear of the hotel, but you may be able to park in Church Square to unload and load.

Remember to take with you:-

- **Insect repellent** – there may be midgies about, particularly near the water.
- **National Trust card**, if you are a member, as this will save on car parking fees.