

Tickets to Ride

Great Value Rail Tickets

Adult Off-Peak Day Return from Derby to Matlock £6.80 and from Nottingham to Matlock £10.40. These prices apply from 2 January 2020. Off-Peak Single and Day Returns are valid after 0859 Monday to Friday and anytime at weekends and Bank Holidays. Children aged 5-15 travel for half the adult fare.

Groupsave for three to nine

Buy Groupsave tickets to save 34% off adult tickets when you travel in a group of three to nine adults. Plus you can take a maximum of four children per group save ticket with you, for just £1 each. Valid for travel on EMR local services after 0930 on weekdays or anytime at weekends and bank holidays. Buy from a ticket office or Conductor on the train. Only valid on EMR services.

Group of 10 or more

Groups of 10 or more travelling on the Derwent Valley Line can save up to 26% on standard rail fares, ideal for school groups for educational trips. Group bookings are subject to availability. eastmidlandsrailway.co.uk/tickets-discounts/get-a-discount/group-tickets

Hop On and Off at Stations on the Way

Day Return and Groupsave tickets between any two stations on the Derwent Valley Line (Nottingham-Derby-Matlock) allow you to hop on and off at intermediate stations on both your outward and return journeys. If you break your journey at an intermediate station you must then resume your journey **in the same direction** to your destination. For example, with a day return between Derby and Matlock, you could stop off at Belper and then Whatstandwell en route to Matlock and, on your return to Derby, stop off at Cromford and then Ambergate.



Derbyshire Wayfarer day rover tickets are valid on most bus and train services in Derbyshire and the Peak District. Not valid for rail travel before 0900 Monday to Friday. Adult tickets £13.40 including one child, £6.70 for seniors or child. Tickets can be purchased at Derby, Long Eaton and other staffed stations, from Tourist Information Centres and on most local bus services (Wayfarer cannot be purchased on the train).

Derbyshire b_line Card Holders Receive 25% off local train fares as long as one end of your journey is in Derbyshire.

derbyshire.gov.uk/bline

Prices correct at November 2019

Jump aboard the Derwent Valley Line, your hourly train service between Nottingham, Derby, Matlock and the Peak District. Discover a host of attractions and great scenery on your journey through the Derwent Valley Mills World Heritage Site.



Rail travellers can enjoy discounted entry to Heights of Abraham, Crich Tramway Village, Sir Richard Arkwright's Masson Mills and Cromford Canal Narrow Boat Cruises. **Just show your train or rover ticket for day of entry.**

Derwent Valley Line Activity Book

Hello I'm Perri the Peregrine

and I am your guide in the **Derwent Valley Line Activity Book**

featuring short walks of discovery from each station. Pick up a copy from Tourist Information or other local outlets or download at eastmidlandsrailway.co.uk/derwentvalleyline



Derbyshire Connect Bus Service from Cromford Station

Book journeys Monday to Saturday to or from Cromford Station, for travel within the Wirksworth and Ashbourne area, including the Southern Peak District and Carsington Water. Find out more at derbyshire.gov.uk/derbyshireconnect

Wonderful Walks can be enjoyed from

local stations including Cromford Canal between Cromford, Whatstandwell and Ambergate, High Tor between Matlock Bath and Matlock and The Chevin above Belper. Twelve Derwent Valley Station to Station Walks offer scenic hillside, riverside and woodland walks between stations. Leaflets are available at derbyshire.gov.uk/derwentvalleymills



Tourist Information Centres

Derby **01332 643411** visiterby.co.uk
Matlock **01629 761103** visitpeakdistrict.com
Nottingham **08444 77 5678** visit-nottinghamshire.co.uk
Newark **01636 655765** visitnewarkandsherwood.info

Derwent Valley Line Information

More Derwent Valley Line information is available at eastmidlandsrailway.co.uk/derwentvalleyline and ScenicRailBritain.com/DerwentValleyLine where you can see our Derwent Valley Line video.



Contact Information

East Midlands Railway Customer Relations

For ticket bookings and information about season tickets, groups, business or assisted travel. **03457 125 678** eastmidlandsrailway.co.uk TextDirect 18001 **03457 125 678** for people with hearing impairments.

National Rail Enquiries

03457 48 49 50 nationalrail.co.uk

Traveline Public Transport Information

We recommend you check bus times prior to travel, bus times quoted in this leaflet are correct at November 2019. **0871 200 22 33** derbyshire.gov.uk/buses

Derwent Valley Line Community Rail Partnership

Works to promote and develop the Derwent Valley Line. The Partnership is funded by Amber Valley Borough Council, CrossCountry Trains, Derbyshire County Council, Derbyshire Dales District Council, East Midlands Railway and Peak District National Park Authority. Other partners include local parish and town councils, tourism and railway organisations.

Derwent Valley Line Community Rail Partnership, Derbyshire County Council, Economy, Transport and Communities Department, County Hall Matlock DE4 3AG.

01629 538062

eastmidlandstrains.co.uk/derwentvalleyline

This publication is available in other formats from

Call Derbyshire 01629 533190.



Train Times 15 December 2019 to 16 May 2020

Derwent Valley Line
Your Adventure Starts Here

Great savings when you travel by train



(Newark) – Nottingham – Derby – Matlock



Train Times Valid from 15 December 2019 to 16 May 2020

Nottingham – Derby – Matlock Monday to Saturday

	NS	S		S	NS
Nottingham	0617	0620	16#	2020 2139c 2138c
Beeston	0624	0625	22#	2025 2145c 2143c
Attenborough	0627	0629 then	25#	2029 2148c 2146c
Long Eaton	0636	0637 at	33#	2037 2156c 2155c
Derby depart	0542	0651	0652 these	48#	2052 2216 2219
Duffield	0549	0658	0659 times	55#	until 2059 2223 2226
Belper	0554	0703	0704 past	00#	2104 2228 2231
Ambergate	0600	0709	0710 each	06#	2110 2234 2237
Whatstandwell	0604	0713	0714 hour	10#	2114 2238 2241
Cromford	0609	0718	0719	15#	2119 2243 2246
Matlock Bath	0612	0721	0722	18#	2122 2246 2249
Matlock	0615	0725	0725	22#	2126 2249 2253

Matlock – Derby – Nottingham Monday to Saturday

	NS				
Matlock	0621	0737	37	2037 2141 2255
Matlock Bath	0623	0739	39	2039 2143 2257
Cromford	0626	0742 then	42	2042 2146 2300
Whatstandwell	0631	0747 at	47	2047 2151 2305
Ambergate	0636	0657	0752 these	52	2052 2156 2310
Belper	0642	0703	0759 times	59	until 2059 2203 2317
Duffield	0646	0707	0803 past	03	2103 2207 2321
Derby arrive	0655	0716	0810 each	10	2110 2214 2328
Long Eaton	0720c	0746c	0823 hour	21	2121 2310c 2338
Attenborough	0727c	0754c	0830	29	2130 2317c 2346
Beeston	0731c	0757c	0833	32	2133 2320c 2349
Nottingham	0719c*	0806c	0844	39	2139 2326c 2358

Nottingham – Derby – Matlock Sunday

Nottingham	0926	1127	1323	1528	1623	1722	1922	2124
Beeston	0932	1132	1329	1534	1629	1728	1928	2130
Attenborough	0935	1136	1332	1537	1632	1731	1931	2133
Long Eaton	0943	1143	1340	1545	1640	1740	1939	2141
Derby depart	0756	0956	1156	1356	1558	1656	1756	1952	2155
Duffield	0803	1003	1204	1403	1605	1704	1803	1959	2202
Belper	0808	1008	1209	1408	1610	1709	1808	2004	2207
Ambergate	0814	1014	1214	1414	1616	1714	1814	2010	2213
Whatstandwell	0818	1018	1218	1418	1620	1718	1818	2014	2217
Cromford	0823	1023	1224	1423	1625	1724	1823	2019	2223
Matlock Bath	0826	1026	1226	1426	1628	1726	1826	2022	2225
Matlock	0830	1030	1230	1430	1632	1730	1830	2026	2229

Matlock – Derby – Nottingham Sunday

Matlock	0838	1038	1238	1441	1638	1742	1838	2038	2244
Matlock Bath	0840	1040	1240	1443	1640	1744	1840	2040	2246
Cromford	0843	1043	1243	1446	1643	1747	1843	2043	2249
Whatstandwell	0848	1048	1248	1451	1648	1752	1848	2048	2254
Ambergate	0854	1054	1254	1456	1654	1758	1854	2055	2300
Belper	0901	1100	1300	1503	1701	1805	1900	2100	2307
Duffield	0905	1104	1304	1507	1705	1809	1904	2104	2311
Derby arrive	0912	1111	1311	1514	1712	1816	1911	2112	2318
Long Eaton	0924	1124	1323	1524	1724	1827	1923	2122
Attenborough	0931	1131	1331	1532	1731	1835	1935	2130
Beeston	0934	1134	1334	1535	1734	1838	1938	2133
Nottingham	0941	1141	1341	1541	1744	1845	1944	2139

Travel Information The Derwent Valley Line is operated by East Midlands Railway.

Train Connections at Derby Monday to Saturday, journey time from London via Derby is typically 2 hours to Belper and 2 hours 30 minutes to Matlock. Derby has good train connections with many parts of the country, including Birmingham, Bristol, Cardiff, Leeds, Leicester, Newcastle and York. Journey time from Birmingham to Belper is just over 1 hour.

Trains between Newark Castle and Matlock

Monday to Saturday most trains operate direct between Newark Castle and Matlock. From Newark, trains arriving Matlock from 0827 to 2126 are direct services except the 2022 arrival on weekdays and the 0826 on Saturdays From Matlock, trains departing from 0737 to 1737 are direct to Newark, except the 1637 on weekdays. Journey time from Newark Castle to Nottingham is typically between 35 and 40 minutes.



Trains between Belper, Chesterfield and Sheffield

The following mainline services call at Belper. Monday to Saturday, the 0717 (0721 on Saturday) from Derby calls at Belper 0728, Chesterfield 0741, Dronfield 0748 and Sheffield 0800.

Monday to Friday, the 1729 from Sheffield, calls at Chesterfield 1741, Belper 1754, Derby 1803, Leicester 1825 and London St. Pancras 1939.

CODE:

S – Saturday; **NS** – Not Saturday; c – change at Derby.

* – On Saturday arrive Nottingham at 0744.

Monday to Saturday some services depart up to 5 minutes later than shown. Monday to Saturday selected services call at Spondon.

Essential engineering work may also take place at other times affecting late evening, weekend and Bank Holiday services. We advise that you check your train times 24 hours before travel by calling National Rail Enquiries on **0347 48 49 50** or by visiting nationalrail.co.uk

Derwent Valley Line – Your Adventure Starts Here

Peak District National Park

The Peak District is a special place for everyone to enjoy with its unique landscape and superb stately homes. **Chatsworth's House and Gardens** are a short bus ride from Matlock on the 217 service (hourly most of the day Monday to Saturday). For **Haddon Hall** and **Bakewell**, catch bus 6.1 or Transpeak (both services hourly including Sundays) which continues to Buxton.

Matlock

Peak Rail steam trains operate between Matlock Station and Rowsley.

01629 580381 peakrail.co.uk

In the centre of Matlock, the lovely **Hall Leys Park** is the focal point for events or just a great place to relax.

Matlock Bath

Discover attractions that all the family can enjoy.

Rail passengers save 20% on a spectacular cable car ride to the **Heights of Abraham**,

a unique hilltop park with tours of 2 famous Show Caverns. Open daily from the 8 to 23 February, then weekends until the 15 March and daily from the 21 March until the 1 November 2020.

01629 582365

heightsofabraham.com

Gullivers Kingdom theme park has over 35 rides for children to enjoy

01629 580540

gulliversfun.co.uk

Pan for gold at the **Peak District Mining Experience**

01629 583834

peakdistrictleadminingmuseum.co.uk

Ambergate White Peak Distillery

offers tours round Derbyshire's only Whisky Distillery

whitepeakdistillery.co.uk

Ecclesbourne Valley Railway's

heritage trains connect with Derwent Valley Line services at Duffield for the historic town of Wirksworth.

01629 823076

e-v-r.com

Derby is a popular shopping destination offering a range of independent and high street shops, eateries and real ale pubs. Several museums provide an insight into the city's past.

01332 643411 visitderby.co.uk

Winter Beer Festival

The 16th Derby Winter Beer Festival takes place from the 19 to the 22 February at the Roundhouse next to Derby Railway Station. derbycamra.org.uk

Crich Tramway Village offers unlimited tram rides which provide a unique trip back in time.

Show your train ticket for reduced entry at the Group Rate price. Group rate not valid for World War II/1940s events on 12 and 13 April and 8 and 9 August. Monday to Saturday bus 142 provides a 10 minute journey from Ripley Road, Ambergate at 0924, 1124 and 1324 and returns from Crich at 1234, 1434 and 1634. Open daily 14 March to 11 June and 16 June to 1 November 2020 (closed between 12 and 15 June). **01773 854321** tramway.co.uk

Derwent Valley Mills World Heritage Site

Journey back to a milestone in the Industrial Revolution when water power was first successfully harnessed for textile production. derwentvalleymills.org

Sir Richard Arkwright's Masson Mills

working textile museum with machinery demonstrations and retail village, between Cromford and Matlock Bath.

Rail passengers save 20% on standard entry or 'gold' entry with steam engine demonstration.

Under 16s go free with a paying adult.

01629 581001

massonmills.co.uk

Cromford Mills is the home of Sir Richard Arkwright's first mill complex, birthplace of the modern factory system. The Gateway Visitor Centre reveals the story of the Derwent Valley Mills.

01629 823256

cromfordmills.org.uk

Cromford Canal Narrow Boat Cruises

offer a relaxing 2 hour cruise on board the historic narrow boat 'Birdswood' with views of local heritage and wildlife.

£1 off any standard advertised fare for rail ticket holders.

07552 055455

birdswood.org

High Peak Junction is home to one of the world's oldest railway workshops

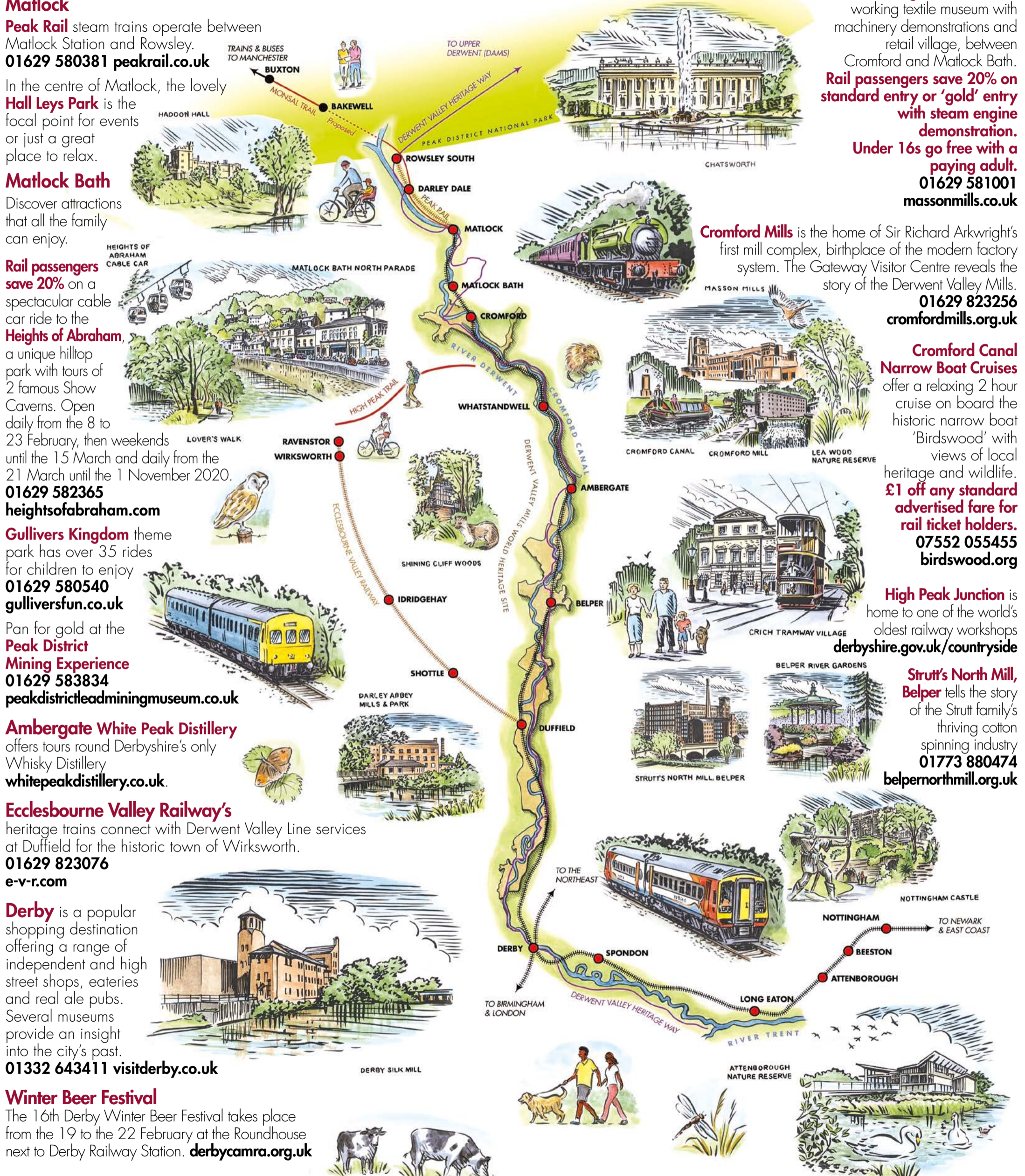
derbyshire.gov.uk/countryside

Strutt's North Mill, Belper

tells the story of the Strutt family's thriving cotton spinning industry

01773 880474

belpernorthmill.org.uk



Nottingham is renowned for its fabulous shops and boutiques. The city's history and culture is also revealed at its various museums and art galleries. **08444 775678** visit-nottinghamshire.co.uk