

# *Midland Mainline Electrification Update:*

## *Derwent Valley Rail Partnership*

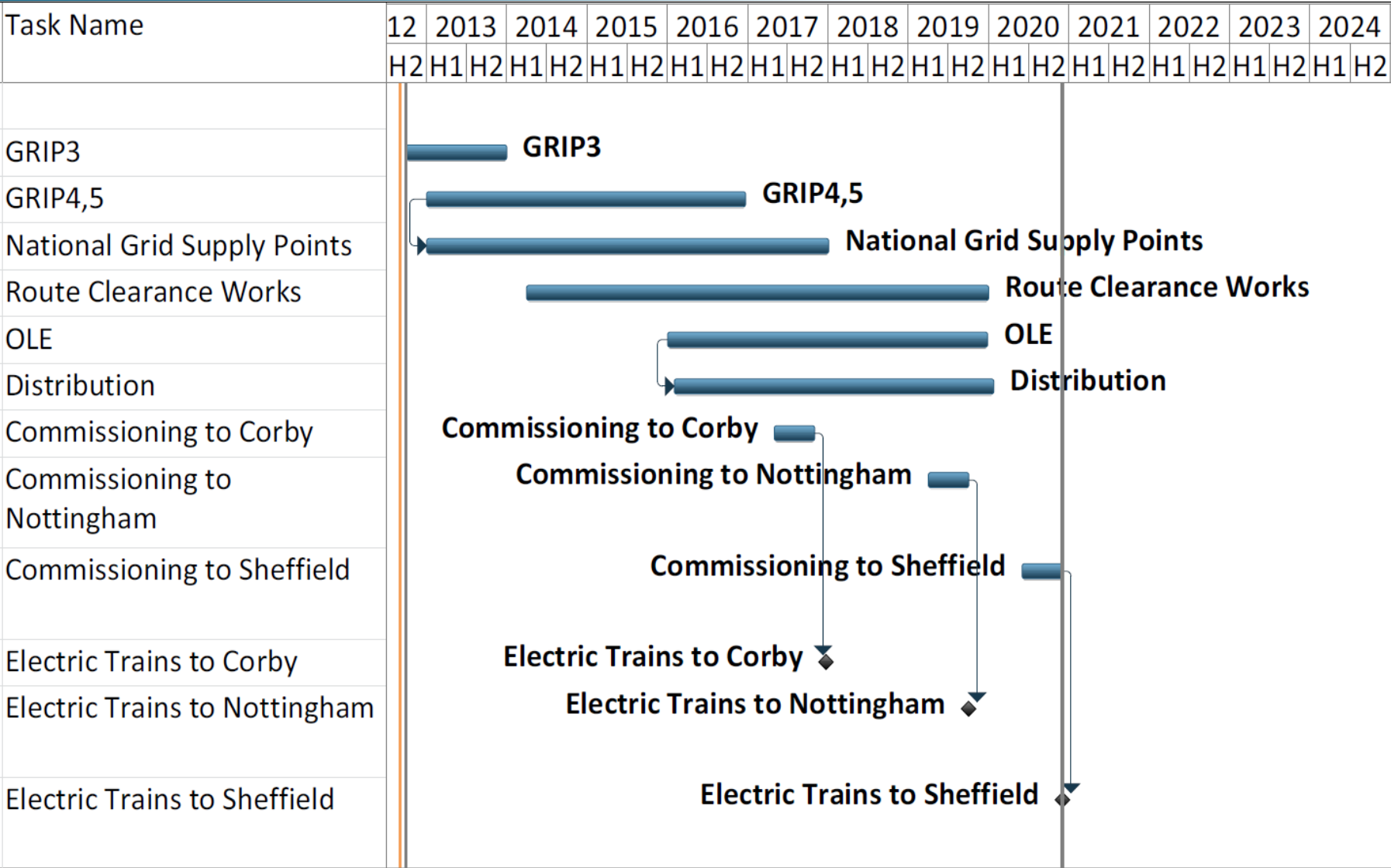
*Tony Rivero  
Town Planning Manager EM/LNE*

*Date 11.12.14*

# *Agenda*

- Midland Mainline Electrification project update.
- Heritage Review
- Construction Impacts
- Associated Works (Derby, Duffield)

# MMLE Programme



# *Heritage & Design*

- Designation – changes to listings
- Design – looking in detail at bridge & tunnel clearances
- Developing design concepts for bridges, parapets and OHLE design in the WHS
- Hope to continue the consultation process through a discussion on design concept options in first half of 2015
- Listed building applications around mid 2016

# *Delivering electrification – Consents & Environment*

- Use of permitted development rights (Part 11 & Part 17 of the GPDO 1995)
- Prior approvals / listed building consents
- Occasional requirement for a change of use to operational railway.
- Environmental assessments and surveys will be undertaken to support the delivery of the scheme
- Heritage appraisal of entire route



# *Key Interventions*

- All Bridges will require height clearance
- All bridges will require parapet works to increase height to 1.8m
- Current plan is for track lower with three exceptions:
  - Newbridge Road Bridge Ambergate
  - Matlock Road Belper
  - Chevin Road Milford (tbc)
- Track lower requires re-construction of platforms at Belper station

# *Likely Construction Effects*

- Major re-construction of Derby station layout
- Belper Main Intervention – significant track lower
- Possible line speed improvements at Toadmoor and Ambergate Jn
- Either Blockade of line or series of possessions for a significant period
- Rail services diverted via Erewash Valley
- Probable bustitution for Matlock services
- All subject to agreement with TOC and discussions still on-going
- Works planned to commence 2018 though vegetation clearance earlier

# *Associated Works*

- Line Speed Improvements at Ambergate Junction raising speed from 15 to 30mph
- Derby station re-modelling - taking advantage of planned signalling and track renewals to reduce conflicts between train movements, additional capacity through extra platforms
- Examine business case for addressing issue of 60mph through Toadmoor tunnel
- Replacement footbridge at Duffield station



# *Future Opportunities*

- Electrification gives a template for improving future services
- Scope to look at improved services on Matlock line dependent on linespeed improvements
- Localised station enhancements, e.g. Belper –
- But tied in with franchise renewal – DfT looking at extending to October 2017 in line with new timetable
- EM Route Study published in draft in the New Year to inform plans for Control period 6