

Derwent Valley Line – Your Adventure Starts Here

Peak District National Park

The Peak District is a special place for everyone to enjoy with its unique landscape and superb stately homes. **Chatsworth's House and Gardens** are a short bus ride from Matlock on the 217 service (hourly most of the day Monday to Saturday). For **Haddon Hall** and **Bakewell**, catch bus 6.1 or Transpeak (both services hourly including Sundays) which continues to Buxton.

Matlock

Peak Rail steam trains operate between Matlock Station and Rowsley.

01629 580381 peakrail.co.uk

In the centre of Matlock, the lovely Hall Leys Park is the focal point for events or just a great place to relax.

Matlock Bath

Discover attractions that all the family can enjoy.

Rail passengers save 20% on a spectacular cable car ride to the **Heights of Abraham**,

a unique hilltop park with tours of 2 famous Show Caverns. Open daily 9 to 24 February, weekends in March and daily from 30 March to 3 November.

01629 582365

heightsofabraham.com

Gullivers Kingdom

theme park has over 35 rides for children to enjoy

01629 580540

gulliversfun.co.uk

Pan for gold at the

Peak District Mining Experience

01629 583834

peakdistrictleadminingmuseum.co.uk

Ecclesbourne Valley Railway's

heritage trains connect with Derwent Valley Line services at Duffield for the historic town of Wirksworth.

01629 823076 e-v-r.com

Derby

is a popular shopping destination offering a range of independent and high street shops, eateries and real ale pubs. Several museums provide an insight into the city's past.

01332 643411

visitderby.co.uk

Winter Beer Festival

The 15th Derby Winter Beer Festival takes place from the 20 to the 23 February at the Roundhouse next to Derby Railway Station. **derbycamra.org.uk**

Crich Tramway Village

offers unlimited tram rides which provide a unique trip back in time. Show your train ticket for reduced entry at the Group Rate price. Group Rate not valid for World War II events on 21 and 22 April or 10 and 11 August. Monday to Saturday bus 142 provides a 10 minute journey from Ripley Road, Ambergate at 0924, 1124 and 1324 and returns from Crich at 1234, 1434 and 1634. Open daily from 16 March until 3 November excluding Friday 14 – Monday 19 June 2019. **01773 854321** tramway.co.uk

Derwent Valley Mills World Heritage Site

Journey back to a milestone in the Industrial Revolution when water power was first successfully harnessed for textile production. **derwentvalleymills.org**

Sir Richard Arkwright's Masson Mills

between Cromford and Matlock Bath, houses a retail village and working textile museum with machinery demonstrations. One child is admitted free with each adult or senior – just show your rail ticket.

01629 581001

massonmills.co.uk

Cromford Mills is the home of Sir Richard Arkwright's first mill complex, birthplace of the modern factory system. The Gateway Visitor Centre reveals all there is to see and do in the incredible 1.5 mile long valley.

01629 823256

cromfordmills.org.uk

Cromford Canal Narrow Boat Cruises

offer a relaxing 2 hour cruise on board the historic narrow boat 'Birdswood' with views of local heritage and wildlife. £1 off any standard advertised fare for rail ticket holders.

07552 055455

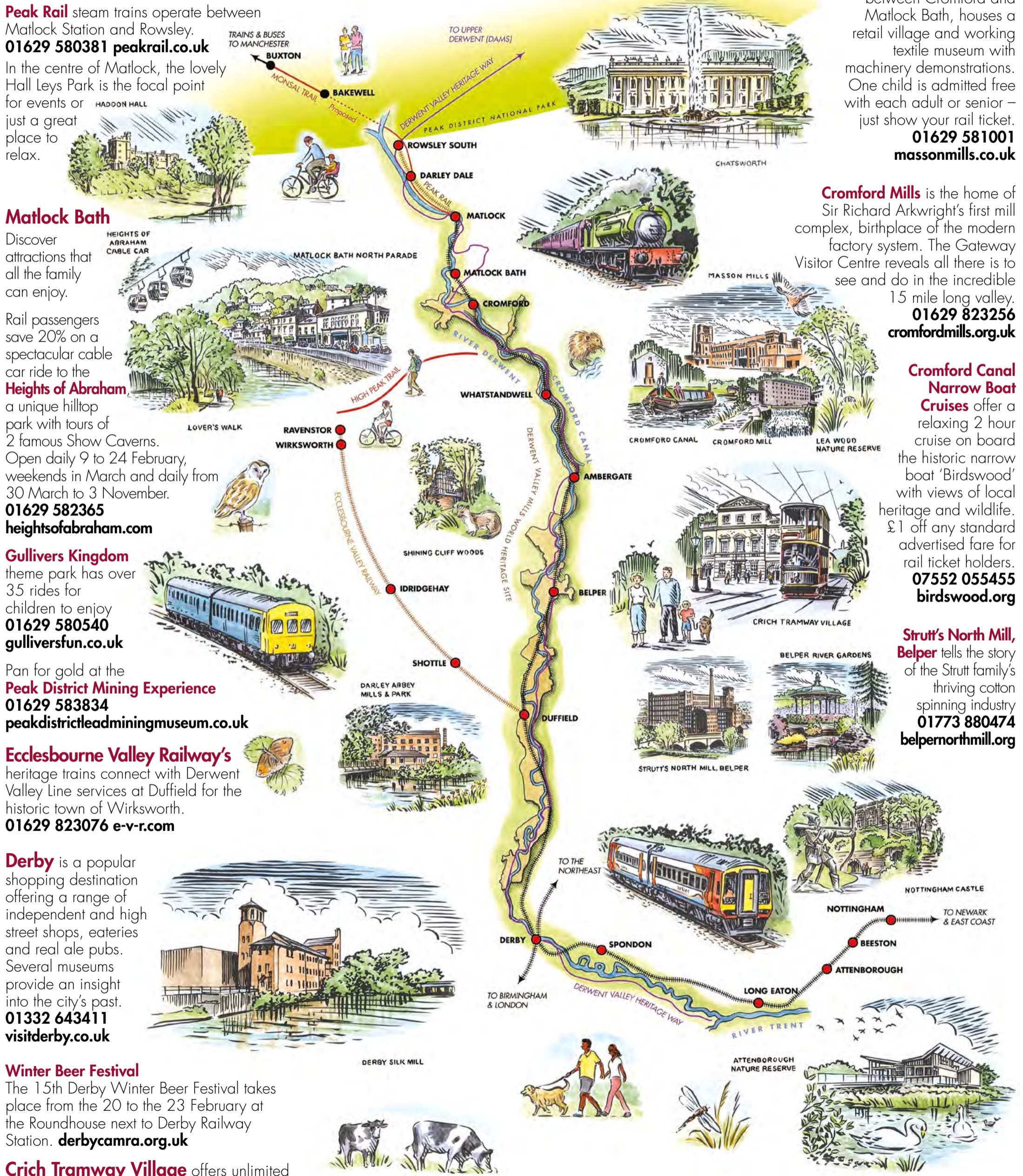
birdswood.org

Strutt's North Mill, Belper

tells the story of the Strutt family's thriving cotton spinning industry

01773 880474

belpernorthmill.org



Nottingham is renowned for its fabulous shops and boutiques. The city's history and culture is also revealed at its various museums and art galleries. **08444 775678** experiencenottinghamshire.com