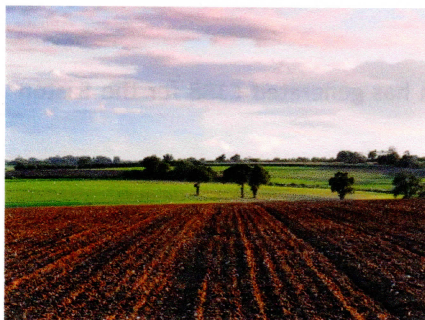


EASTON VILLAGE NEWSLETTER

Issue 74

December 2010

FARMER BURTON'S COUNTRY TALK



Things are now quietening down on the farm after a changeable year, with a wet harvest followed by a dry cultivation season. At the end of September, when it came time to drill (sow) the wheat into the fields, we only had one days drilling before the heavens opened and rained me off for several weeks (I told Jill not to squash that beetle!!). Fortunately it dried up enough to resume and finish drilling the wheat by October 15th. With still some spraying to be done in the wheat to control the grass weeds on the next calm day, I will also be out lamping most weeks at night to try and control the vast numbers of rabbits that graze off the crops. The game shooting season is now upon us and I will be out shooting, beating and working my dogs, Whizz and Dash, over the next few months on local farm shoots. I sometimes have spare game and

if you fancy trying any oven ready pheasants or rabbits (sorry Claire, no ducks!) they can be prepared for you for a reasonable cost.

49 CLUB WINNER

Chris Charlton was the winner of the October draw.

CHURCH NEWS

Services in Easton for the next month are:

5 th December	-	9.30 a.m.	Sunday Worship
12 th December	-	6.00 p.m.	Evensong
19 th December	-	6.00 p.m.	Carol Service
25 th December	-	9.30 a.m.	Christmas Eucharist



If you have a favourite carol that you would like included in the Village Carol Service on 19th, please let Jenny Hyde know (891454 or email below) no later than Friday 10th December and we will see whether it can be included. And on **Saturday 18th December** we should be most grateful for extra help from 2.00 p.m. onwards with decorating the Church for the Carol Service the following day and for Christmas. Donations of garden greenery would also be most welcome.

CHURCHYARD WORKING PARTY



There was a marvellous turnout for this – many, many thanks to all who came along to help. Thanks, too, to the Goulds for providing hot coffee and bacon butties for the workers! By the end of the morning we had a much tidier churchyard, but unfortunately David Hyde's fairly new wooden-handled shears had disappeared! Someone has probably picked these up by mistake so if you were there, please could you check whether it was you as he would like to have them back?!!

"NUMBER TWELVE"

Have you tried our new local shop and deli? "Number Twelve" (opposite The George in Spaldwick) stocks a wide variety of locally-sourced produce, seasonal fruit and vegetables, freshly-baked bread, home-made preserves etc. The shop is most attractively laid out and the service is helpful and friendly. It is great for the community to have a near-by shop again after many years without one: do call in and support it.

CALLING ALL ARTISTS



Catworth Art Club is seeking new members to capitalise on using their newly-refurbished Village Hall which now has an open airy studio feel. The Club comprises a varied, friendly and uncritical bunch of people with a wide range of artistic ability and age, who have painted and drawn together indoors and out. You can paint or draw anything you like. Some set up their own still life while others work on an existing painting,

perhaps started outdoors. The Club possesses a wide library of donated instruction books, magazines and videos. Also materials such as spare brushes, watercolour box, crayons and pencils - all freely available. If you are interested in joining, whatever your ability, please contact Gordon Reffin (tel: 01832-710336 or email gordon@thereffins.co.uk). (Children must be accompanied by an adult).

HELP NEEDED

If your talents for painting lie more in the decorating department, help is needed to complete the painting of the walls in the base of the church tower and cloakroom area. If you can spare an hour or so, Peter Gould would be delighted to hear from you (891043).

FUND-RAISING

Grateful thanks to all those involved in the CHCT Ride & Stride this year, which has generated £188 for the Easton Church Fabric Fund.

WOOLLEY HILL WIND FARM PROPOSAL



If you saw the photo-montages in Ellington recently, you will be well aware that if it goes ahead, this development WILL affect Easton. This photograph (much reduced and consequently unfortunately lacking definition – the original was 3 feet wide!!) shows the view from the south-east of Easton – the arc shown on the map. Woolley Hill Wind Farm Action Group has arranged for a 20-foot long helium balloon to fly at the height of the masts for two days sometime between 25th November and 5th December (exact date subject to CAA clearance) so that you can assess the visual impact on our village. Please



photograph this from your property and forward a copy to the Action Group (ron.forwardmarketing@gmail.com). If you see the balloon you will certainly see the turbines! Copies of the latest Action Group Newsletter have been left in the Newspaper Box at Kath Goodwin's in The Lane so if you haven't already picked one up, do collect one soon. They include information on wind power and reasons to say No. *Please ensure every member of your family sends an objection to HDC, because residents who do not object will be deemed to have no objection to the proposal.*

BT RACE TO INFINITY

Over the next five years BT is rolling out superfast fibre optic broadband across the UK. If you are not on the announced roll-out plan (and the Woolley exchange is not) the race to infinity gives you the opportunity to fast track your area to get BT infinity next. The five areas with the largest *percentage* of votes by December 31st 2010 will win the chance to bring superfast broadband to their area. Currently the Woolley exchange only has a 7% vote out of some 1,700 connections so we need to get some action! To cast your vote, log on to www.racetoinfinity.bt.com/.

HDC CHRISTMAS/NEW YEAR COLLECTION SCHEDULE

Over the busy Christmas and New Year period it is very easy to overlook the refuse collection dates! To help keep track of this, the following table (kindly provided by the Parish Council) may assist:

NB: Refuse and recycling will be collected as normal on 24th and 28th December.

Normal collection day		Will be collected on
Tuesday 28 December	GREEN BIN	Tuesday 28 December
Friday 31 December	BLUE BIN	Friday 31 December
2011		2011
Tuesday 4 th January	BLACK BIN	Wednesday 5 January