

# Easton Village Newsletter

## Easton Village Newsletter

Issue 132

November, 2015

### NATURE NOTE 92

**Brian Davis**



*The Holly and the Ivy / When they are both full grown.* I confess to having mixed feelings about ivy. In my roadside hedge I have had to attack it where it is starting to smother the planted bushes. Likewise, I have removed it from the young oak tree that I planted some 30 years ago on the bank beside the Pumping station, where it was threatening to constrict its growth and reach the crown. (How many of you have ever noticed this tree?) Elsewhere, though, ivy can make a real contribution. This picture shows a small part of a great bank of ivy flower in my orchard, where it covers an old hawthorn and provides the principal nectar and pollen source for insects in October: I have counted up to three Red Admirals, two Commas and a Peacock butterfly together on this bush, as well as dozens of honey

bees, a couple of hornets, a wasp or two, and a variety of hoverflies. The flower buds are also the food-plant for the summer brood of the lovely Holly Blue butterfly (holly being the food-plant of the spring brood). On big trees, like those in the churchyard, the intertwining stems and evergreen foliage of ivy can also offer nesting sites for birds and shelter for all manner of creatures without endangering the tree. It is not parasitic on the tree, like mistletoe, as it draws all its nutrients from the soil. The foliage is also just right for bedecking the church at Harvest Festival.

### CHURCH SERVICES IN NOVEMBER

<p><b>Sunday 1st November (All Saints Sunday)</b>            09.30 COV Patronal Festival Eucharist (Rev Nicki Bland)            10.45 KIM Family Service (Rev Stephen Bowring)            10.45 SPA Parish Communion (Rev Dr John Rawlinson)            15.00 STO Evensong (Rev Stephen Bowring)</p>	<p><b>Sunday 8th November (Remembrance Sunday)</b>            09.30 TIL Family Service (Mrs Lesley Bowring)            09.30 EAS Parish Communion (Rev Nicki Bland)            10.45 KIM Remembrance Day Service (Rev Stephen Bowring)            10.45 SPA Morning Worship (Rev Dr J Rawlinson)</p>
<p><b>Sunday 15th November (2nd before Advent)</b>            09.30 COV Matins (Rev Stephen Bowring)            09.30 STO Parish Communion (Rev Dr John Rawlinson)            10.45 KIM Matins (Rev Ron Lancaster)            10.45 SPA Parish Communion (Rev Nicki Bland)            11.00 BAR Family Service (Mrs Lesley Bowring)            18.00 EAS Evensong (Rev Stephen Bowring)</p>	<p><b>Sunday 22nd November (Christ the King)</b>            09.30 TIL Parish Communion (Rev Nicki Bland)            09.30 EAS Morning Worship (Mr Mike Baker)            10.45 KIM Parish Communion (Rev Nicki Bland)            10.45 SPA Family Service (Rev Stephen Bowring)            15.00 KIM Evensong (Rev Stephen Bowring)</p>
<p><b>Sunday 29th November (Advent Sunday / St Andrew)</b>            10.45 KIM Patronal Festival Eucharist (Rev Stephen Bowring)</p>	

### ANNUAL CHURCHYARD TIDY

The annual churchyard tidy has been planned for Sunday 29<sup>th</sup> November starting around 10.45 a.m. Please bring your own tools/equipment. There will be coffee and bacon sandwiches for all who come and help! Come and join us any time up to 2.00 p.m.

### KATH GOODWIN

Thank you to everyone in Easton who sent cards, emailed, wrote letters or phoned with support to our family. This was appreciated. Easton church was bursting at the seams, Kath would have been chuffed! Thank you all

The Burton Family

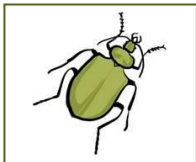
## CAMBRIDGESHIRE HISTORIC CHURCHES TRUST

Roger Silcock

The annual sponsored cycle ride took place on 12<sup>th</sup> September. Three people from Easton took part and they raised £185, of which half comes back to the Easton Church Fabric Fund with the rest put in a general fund for the maintenance of historic churches in Cambridgeshire. Many thanks to all who helped in any way, particularly our very generous sponsors. We visited 12 churches in the area and were grateful for the hospitality and refreshments that were provided.

## EASTON FUND AND SOCIAL COMMITTEE – BEETLE DRIVE

Ed Sloper



Tickets are now on sale from your usual ticket seller, for the Beetle Drive on Saturday 21 November in the Church, starting at 7.30pm.

Ticket numbers are limited, so they are being sold to Easton villagers first, the price being £6 for adults and £3 for school age. This includes a sumptuous ploughman's supper and there will be a donation bar.

## LOCAL TALENT!

There will be an opportunity to hear Easton's very own star saxophonist at the Hunts Phil concert which takes place on November 7th at the PAC, Huntingdon. Rob Burton will be playing a concerto with the Huntingdonshire Philharmonic Orchestra called *Saxo Rhapsody*. The concert is celebrating the 450th anniversary of the foundation of Hinchingsbrooke School. If you'd like to come, you can get tickets from the website [www.huntsphil.org.uk/programme](http://www.huntsphil.org.uk/programme) or from 01480 861591.

## CHRISTMAS TREE FESTIVAL

### Friday 4 December to Sunday 6 December

**30 beautifully-decorated trees in the lovely surroundings of St Andrew's Church, Kimbolton**

Opening Friday 4 December at 7pm  
Entrance £5 including ticket for entry on Saturday or Sunday. Children U12 free.  
Includes mince pies and mulled wine.

Open Saturday 5 December  
10.30 am – 4.30 pm  
and Sunday 6 December 12 noon – 4.30 p.m.  
Entrance £2.50 Children U12 free.

Refreshments on sale throughout the festival  
Various stalls. Everyone Welcome!



### **Saturday 5 December Concert by the Aragon Singers**

7.30pm at St Andrew's Church Kimbolton

Tickets £8 [including a glass of wine]  
from 1<sup>st</sup> November from Watsons, Kimbolton  
or on Sundays after service

**Copy deadline for the next newsletter will be Sunday 22<sup>nd</sup> November 2015.**