



# THE WHEEL INN



## January at the Wheel

**Closed 1st - 5th  
Re-opening  
Friday 6th  
5.30pm**

**then**

**Saturday 7th  
From 12noon  
Sunday 8th  
12noon - 5pm**

**Rest of January  
open  
6pm Fridays  
12noon Saturdays  
12noon - 4pm Sundays**



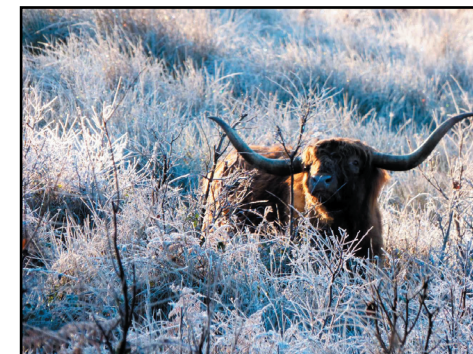
**Check the Wheel Website  
for latest Information or  
Telephone during  
Opening Hours**

[www.wheelinn-westwell.co.uk](http://www.wheelinn-westwell.co.uk)  
or call

**01233 712430**  
[admin@wheelinn-westwell.co.uk](mailto:admin@wheelinn-westwell.co.uk)

# THE WESTWELL

167 January 2017



*Secret Santa at Dog Training  
3 photos of frost before the fog at Hothfield Common, taken by Val Butcher*

**Every Mon, Wed, Fri 6am Early Morning Fitness - Parish Hall**  
**10th January Book Club The Wheel, p13**  
**Every Tuesday 7.30pm Players' rehearsal**  
**22nd January 2.30pm Players' rehearsal**  
**29th January 2.30pm Players' rehearsal**

SUNDAY	MON	TUES	WED	THUR	FRI	SAT
1 Naming of Jesus 8am Holy Communion St. Mary Westwell	2 Bank Holiday	3	4 6am Early Morning Fitness 11am Over 50s Fistepps	5 R.F.W.G 9.15am Pilates 10.30am Dog training	6 6am Early Morning Fitness 10am Eucharist 10.30 Coffee The Wheel	7
8 Bapism of Christ 11am Iona Eucharist St. Mary Westwell	9 6am Early Morning Fitness 1.30pm WI Painting 7pm Fitness	10 7.30pm Players' rehearsal	11 6am Early Morning Fitness 11am Over 50s Fistepps	12 Rc.F.T. 9.15am Pilates No Dog training 7.30pm WI	13 6am Early Morning Fitness	14
15 2nd Sunday of Epiphany 11am Family Worship St Mary Westwell	16 6am Early Morning Fitness 7pm Fitness	17 11am Book Club p13 The Wheel 7.30pm Players' rehearsal	18 6am Early Morning Fitness 11am Over 50s Fistepps	19 R.F.W.G 9.15am Pilates 10.30 Dog training	20 6am Early Morning Fitness	21
22 3rd Sunday of Epiphany 11am Eucharist St. Mary Westwell 2.30pm Players' rehearsal	23 6am Early Morn 1.30pm WI Painting 7pm Fitness	24 7.30pm Players' rehearsal	25 6am Early Morning Fitness	26 Rc.F.T. 9.15am Pilates No Dog training	27 6am Early Morning Fitness	28
29 Presentation of Christ in the Temple 8am Holy Communion - Charing 10.30am Benefice Communion Pluckley 2.30pm Players' rehearsal	30	31 7.30pm Players' rehearsal	Feb 1 6am Early Morning Fitness	2 R.F.W.G	3 6am Early Morning Fitness	4

# From the Editor's desk...

Happy New Year to you all

I am sorry this is late, this is because the printers were closed between Christmas and the New Year, only opening on 3rd January.

The format and content of this issue is different due to the wonderful response I had to thoughts and memories of Kip.

I am writing this on 2nd January with the sun pouring in on my computer, what a difference from last week's horrid weather. 2017 continues with the aim to get Westwell fit with the aid of classes given by Hayley and Natalie.

The Players rehearsals are in full flow preparing for the next production.

Please note the January opening hours of The Wheel, opening Friday, Saturday and Sunday.

*Carolyn Thorneloe* ✍

## Country Funerals

Ashford's only independant  
Funeral Directors

For a caring 24 hour service  
contact Leah Hutchinson

01233 712222  
07708407229

Pre-paid funeral plan available



The views of any contributor to this publication may not necessarily be those of the editor and team, nor can the Westwell Eye accept any responsibility in connection with any companies or organisations mentioned or any advertiser.

Correspondence to: Carolyn Thorneloe, Gaoler's Retreat, 5, Faversham Road, Lenham, Maidstone Kent ME17 2PN. Tel: 01622 859376, Email: westwelleye@gmail.com

### **COPY DEADLINE - 20th of the month**

ADVERTISE YOUR BUSINESS IN THE WESTWELL EYE

Classified ads from £3 p/issue - Business block ads from £60 p/year.

Prices include free design, illustration and layout.

Copy & payment to be received by the 20th of each month.

Payable to:- The Westwell Eye,

Sue Wood, 14, Sandyhurst Lane TN25 4NS

Would you like to receive the Westwell Eye but don't live in the area?

You can now receive it every month by post. For an annual subscription, simply send the editor your name, address and a cheque for £7 made payable to The Westwell Eye

## Westwell Community Watch Scheme (contd. from p14)

### Leaving your property empty.

Most people take steps to make their house look occupied if they are going out, going away or leaving it empty. As well as checking your home and garden are securely locked up before you leave, you should also use timers to switch on lights or radios to make it look or sound as though someone is home. Ask a trusted friend or neighbour to keep an eye on your property, park on your driveway or go in and remove papers, milk and post from your front door. Advise your local PCSO or Neighbourhood Watch co-ordinator if the premises will be empty for any extended period.

### Policing in Kent

Community policing across the Ashford division has been restructured. Sergeant Jazz Bloomfield of the Community Safety Unit at Ashford Police Station has told us: the PCSO team has been divided into Urban and Rural Officers. The teams are tasked to provide visible policing across the district and to brigade to tackle specific issues/incidents as they arise. In this way all areas will receive cover all of the time, including when the “local” Officer is absent,. The Rural Officers are still named and the geographical area for the Urban Officers is relatively small so they will gain a good understanding of issues and people in that area.

The Rural Officers for Downs West,our area are PCSOs Paul Moorey Angie Burden.

For more on these and news of other local criminal activity go to the Police and Community Watch page at [www.westwell.org](http://www.westwell.org)

To report suspicious activity call 101 or use Country Eye – in an emergency call 999

Keep Vigilant - Tony Bartlett – WCWS Co-ordinator

## Memories of Christopher Pitt

One of my earliest memories of Kip was at Westwell Players rehearsal late 1980's. Someone mentioned wouldn't it be lovely to have a double bass join our band. Next rehearsal in came Kip with an old wooden Tea Chest turned upside down with a piece of washing line attached to a broom handle. A magnificent sound it made too. Such a resourceful man. Another of my early memories. Westwell players used to sing at different groups and clubs during the winter, I tagged along aged 9 or 10. Afterwards the players would stop at a local pub for a well earned drink. Due to my age i wasn't allowed into the pubs, so Kip along with Mary Anne sat outside with me in the wind rain and cold whilst I sipped my bottle of Coca Cola. Never would they allow me to be left out, no matter how warm the other members were, sitting by the roaring fire inside the pub. So thoughtful. *Neil Cackett*

My memories of Kip are sketchy as I was very young when I saw him most, but they are very fond. He was such a kind, friendly and fun man who was always so jolly! Barber shop singing around the piano in the village hall, endless energy as ‘compere’ at the fete and a face that I will always remember as a huge part of the village life of Westwell. *Alex Callanan* (Thorneloe)

“A great man is one who leaves others at a loss after he has gone”.... Kip Pitt was truly a very great man. *Farah Baldwin*

Wow, how to start, and how to keep it short !!! How could you possibly condense your memories of Kip.

I remember his terrific kindness to us tennis girls every week. How we monopolised the Pitt's wonderful court and swimming pool. How Kip was always busy doing something beautifully creative. His generosity when one of the tennis players had a Special ‘0’ Birthday - it was immensely helpful to realise how old one really was ‘cos one had been given such a marvellous party at Hurstway !

Kip's lovely gift to Philippa of a wooden bowl on the occasion of her marriage to Richard Batchelor - it was in pride of place the other day, when Phil talked about her work as a volunteer with The Woodland Trust.

The delicious sounds of Kip's music-making with the ‘band’ at Westwell Players’ events. Kip's acting, usually in heavy disguise, and his poems, delivered with such a straight face, which made me fall about aching with laughter. And last but not least, on the occasion of our moving away from Kent to the Midlands, the Pitt's fabulous send off at the pub with some of our tennis friends and so much kindness and unforgettable food. *Bridget Andrews.*

When we moved to the village in 2006, Kip was sort of like the unofficial “mayor” of Westwell. People always looked to him for guidance and good humour. How lucky we were to have known him *Joan & Peter Hazell (Santa Barbara, CA)*

At one of the Players shows the men acted a WI meeting in drag. Kip was chairman, Geoff secretary and Ron Marriott treasurer. They had the audience in fits of laughter and I could not believe how much Kip and Geoff looked like their late mothers. A lasting happy memory *Joan Richards*



## Community News

### Useful telephone Numbers

Age UK	642094
Ashford Volunteer Bureau	633219
Bees (swarming)	
Andy Bithell	740650 / 07933892413
Borough Councillor:	
Larry Krause	01233 643497
CAB	626185
Carers Support Group	664393
Childline Freephone	0800 1111
Cinema	0871 2208000
Citizens' Advice Bureau	626185
Cruse Bereavement Counselling	878225
Doctors (Charing)	01233 714490
(Hayesbank)	624642
Dog Warden	01233 330340
Hospital (William Harvey)	633331
KCC Community Warden for Hothfield and Charing - Dave Beckley	07811 271306
CROP	01622 851200
Library (Ashford)	03000413131
(Charing)	713177
MS Therapy Centre	01227 470876
NHS Direct	0845 4647
NSPCC	0800 800500
Parish Hall Booking	01233 712016
	doriscackett@btinternet.com
Parish Council (clerk, Sue Wood)	623902
Pilgrims' Hospice (Admin)	504100
(Patient enquiries)	504112
PCC Secretary (Heather Lister)	712981
PCSO	angie.burden@kent.pnn.police.uk
Samaritans	610000
Shopmobility	621196
Solicitor (Thorneloe & Co.)	01622 859416
Victim Support	0845 30 30 900
Water Supplies Queries	0333 000 0002
Water Leak Line	0333 000 3330
Wealden Wheels	01233 840000
Wheel Inn (landlord James Meire)	712430
Westwell Community Website:	
<a href="http://www.westwellpc.kentparishes.gov.uk/">http://www.westwellpc.kentparishes.gov.uk/</a>	

## AZ CARING SERVICES



For all aspects of care and support work, please contact Arthur and his team on  
07552 766428  
email: arthurzvik@hotmail.co.uk.

Excellent local references

## Oil Boiler Service

established 1987

Family friendly business  
Professional, efficient service



For servicing, breakdowns and commissioning contact: P&V Quenby Ltd  
01227 760428 [www.oilboilerskent.co.uk](http://www.oilboilerskent.co.uk)



## Godinton House and Gardens

### All About Roses

Saturday 18th February 2017

Join Viv Hunt, head gardener for a practical workshop looking at planting, maintaining and pruning roses

Great idea for a gift

9.30am - 2.30pm, £55 inc refreshments and homemade light lunch

[www.godintonhouse.co.uk](http://www.godintonhouse.co.uk)

Godinton Lane, Ashford TN23 3BP 01233 643854



## Thorneloe & Co. Solicitors



### Michael and Harriet Thorneloe

An independent family practice providing a friendly, high quality personal service.

#### Specialists in:

- Wills
- Estate Administration
- Trusts & Taxation
- Lasting Powers of Attorney
- Court of Protection
- Residential Conveyancing
- Commercial Conveyancing
- Re-mortgaging
- Equity Release
- Buy-to-Let

01622 859 416

[thorneloe@thorneloe.co.uk](mailto:thorneloe@thorneloe.co.uk) [www.thorneloe.co.uk](http://www.thorneloe.co.uk)

Now at St. Mary's House, Lenham, Kent ME17 2PH

Authorised and regulated by the Solicitors Regulation Authority

Registered Number 70429

**carpets direct**

**SELECTA TWIST**

40oz WOOL TWIST  
MADE FROM 80% PURE  
NEW BRITISH WOOL

**£19.95** SQ.M  
INCLUDING FITTING

**VISIT US TODAY AT**  
SELECTA HOUSE  
CHARING HILL  
CHARING  
KENT TN27 0NL  
8AM - 6PM MON - FRI  
9AM - 5PM SATURDAY

**CALL 01233 714 999**

[CARPETSDIRECTCHARING.CO.UK](http://CARPETSDIRECTCHARING.CO.UK)

CARPET

WOOD

LAMINATE

VINYL

## Memories of Christopher Pitt - contd.

As many of us will testify, one could never be around Kip for long without him initiating some wonderfully inventive, fun game. Being with him and Mary Anne in Suffolk was no exception. Just this last year, in 2016, although unwell, Kip still managed to accumulate the items needed for his latest project / competition..... which was to make 'Pineapple Pete'! We were all instructed to make the bird, 'Pineapple Pete', using only a pineapple and cocktail sticks!

Another year, much fun was had when he encouraged and challenged us all to create stone creatures using pebbles from the beach - and then name them!

And oh the concentration and laughs we had preparing unusual home made weights and all things necessary for our crabbing competition .....

Being around Kip usually meant having fun and keeping busy and being cheerful. We loved him so much and will miss all the laughter we had with him, but oh what amazing memories we have of this wonderful man, which we know will sustain us through the sad times.

**Chris and Roland Benstead**

Three years ago I was lucky enough to win a wood turning session at Kip's workshop. I was first impressed by what a well organised, light and tidy workshop room it was: all the chisels, guides and other tools all neatly lined up. I was then impressed by what an amazing teacher Kip was; patiently showing me how to do the wood turning; being generously encouraging as my confidence increased. The candle stick I made under his tutelage is still in use, now also joined by a remarkable bowl Kip turned in 2015 from a magnificent piece of York Gum Burr. Kip's skill, generosity and teaching are a wonderful legacy. **Christine Drury**

For the great many people who mark the August Bank Holiday with a visit to the Westwell Fete, Kip is both a seen and unseen hero: the visible part of course is the joy and hilarity of the leading of the Cow. This will be a very hard act to follow, but one the Fete will surely continue as a Fete highlight. It was Kip who also established the egg throwing competition, which now draws participants from far and wide. For so many years Kip was a principal organiser and the ringmaster for the Fete and its compere. So much was unseen work behind the scenes: picking up the grass mowings the day before; working out the layout of the field. And that was as well as all the work he did as chairman of the parish hall committee. Kip taught many of us what community means and how to just get things done without fuss or delay. Kip was and will continue to be a great example we will not forget, nor his tombola machine. **Christine Drury written on behalf of everyone.**

### Plans

16/01673/AS & 16/01674/AS Church Barn, Westwell Court, Eastwell Lane, Westwell To replace the existing double doors/windows to the side of property with similar style black powder coated aluminium bi-fold doors. The Parish Council had no objections to the proposal and a decision is awaited from the Borough Council.

16/00462/AS Hothfield Works, Watery Lane, Westwell Planning application to vary the hours of working of the Barber Green Asphalt Plant at the Tarmac Hothfield Works to increase the permitted "out of hours" working to up to 180 periods per year. This has been permitted by KCC, subject to conditions.

## January on Hothfield Heathland

If you haven't visited Hothfield Heathland before, it could be a new year's resolution to visit right now and then monthly to see how the seasons will treat our wildlife this year, exploring a different section on each visit. Or become a volunteer with KWT. Much wildlife will be hibernating but on days of low light, field voles, wood and harvest mice will be hunted by the normally nocturnal barn owls especially if they are short of food. For us the most obvious sign of rodent activity will be hazelnut shells discarded under their bushes, or nuts jammed into a tree by woodpeckers or nuthatches. In the spring seedling hazels far from their parent will show where squirrel buried then forgot their harvest.

Some of the autumn show of fungi will linger and it's always interesting to count how many wild flowers are open in the depths of winter. Gorse will top the list and gets a mention in these articles almost every month. Weather permitting, there will be signs of early awakenings, leaves on the honeysuckle, getting ahead of its host trees in the photosynthesis race, and hazel catkins starting to loosen, with their tiny female flowers further up the twigs with red stigma to catch the wind-blown pollen, and other occasional flowers out of season, out of rhyme.

Among Sackville-West's Apse of trees, tracery of network the waxy protective cuticle on the leaves of native evergreens shine out. Holly, *Ilex aquifolium* is the only European species in a genus of over 400; *Ilex pataguaensis* produces Yerba Mate, and leaves of *Ilex guayusa* have the highest caffeine content of any known plant. On our wintry heath soft holly tips would have been cut as fodder for sheep. On Dungeness the Holmstone wood of stunted holly trees, first documented in the eighth century, may have been part of sea defences.

Ivy berries (*Hedera helix*), plump and black, are a rich source of food for birds. Ivy only flowers on woody growth once the plant stops climbing, creating a dense tangle of stems and leaves busy making food while the host is dormant. Ivy will produce good natural nesting and roosting cover for birds and insects, pollen and nectar at the wintry end of the year then berries for birds and mammals.

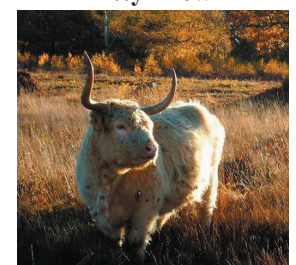
Warm clothes and sturdy footwear, or wellies for puddle-lovers, are all you need to enjoy a breath of fresh in this special space on our doorstep, open to all, including dogs that are kept in check. The noticeboards at the entrances give the location of the livestock, the noticeboard down the main slope from the Cade Road car park gives recent wildlife sightings. For email alerts on the location of the livestock, or to join the volunteers who help maintain the reserve or check the livestock contact the Warden: [ian.rickards@kentwildlife.org.uk](mailto:ian.rickards@kentwildlife.org.uk), tel 01622 662012.

**Margery Thomas**

**Taken by  
Ian Rickards**



**Taken by  
Kitty Brown**





## Westwell WI

This month's meeting was "Party Night" when the committee cooked dinner for the members and served them their meal. Approximately 30 members sat down to a meal of lasagne, salad and garlic bread, washed down with whatever tippie each had decided to bring. Dessert was either pavlova or apple cake and this was followed by mince pies, coffee and mints.

After the dinner we were delightfully entertained by Maureen Jones who played the guitar and sang carols, songs and ditties the latter two mostly written by herself.

Presents were given by Santa ably assisted by his Magic Elf – Oh sorry I mean an elf who did magic tricks!

The competition was plastic and was won by Ivy Clifton with her Jelly Baby Cookie Jar.

Monthly meetings take place on the second Thursday of the month and there is always the opportunity to come as a visitor 3 times for a fee of £1 before making a decision to join us. Why not visit our website <http://westwellwi2015.wix.com/westwellwi>

During the year members have attended many events as well as the monthly group meetings. February saw a group going 10 pin bowling; May a trip to the beautiful Leeds Castle to ride Segway; June a race Night to commemorate the Queen's 90th birthday and also an evening of croquet; July bat "n" Trap and a Mystery Trip; August a BBQ; September a quiz night and in November a trip to Windsor Castle to view the Queen's clothes and a Wine Tasting evening.

As you can see there is always a lot to take part in and hopefully we cater for all age groups. It's great to see the regular members join year after year but we would dearly love to see new faces too – could you be one of them?

*Catherine Hazelden*

Painting Group (open to non-members)

January 9th, 23rd, February 6th, 20th.

**Next Meeting:** Thursday 12th January at 7.30pm.

**Talk:** Growing up in the Middle East by Nada Kydd

**Hostesses:** Marilyn Warner, Chris Fuller and Meg Lloyd

**Vote of thanks:** Liz Jamieson

**Competition - Red**



**EARLY MORNING  
FITNESS CLASSES**

Yoga, Body Conditioning,  
Circuits & Core Training

Westwell Village Hall  
6am  
Monday, Wednesday, Friday

CONTACT  
HAYLEY ON  
07843099912

FOR MORE  
INFORMATION

**CHIROPODY  
& PODIATRY**

+Nail cutting  
+Corns +Verruca  
+Hard skin Ingrown nails  
+Community group talks  
+On-site group Chiropody  
visits

Podplus Shop & Clinic  
Julie Rose Stadium, Ashford, TN24 9NG  
01233 660 851 [www.podplus.co.uk](http://www.podplus.co.uk)

### B & B in Westwell The Lodge - at Glebe Cottage



Self Contained Annexe,  
Twin Room, Ensuite Shower,  
Continental Breakfast  
£55 pn, special price on production  
of the Westwell Eye

Ring Geraldine Bortoli  
01233 713919/07852 271886

### Handyman Services

Home Improvement Specialist



Solutions for your  
Property Maintenance Needs  
Expert Help for your DIY Projects,  
Furniture Assembly etc...

Darren Smith

07471 900084



HandymanMaidstone

### Airport Transfer & Chauffeur Service ETM Cars

Competitive Prices

Professional Service

Safe Comfortable Journey

Bottled Water Provided

Free Wi-Fi

Dave Hopper

01233 629551

[info@etmcars.co.uk](mailto:info@etmcars.co.uk)



### ANP Security



Supply, install and maintain  
security systems, including

Intruder Alarms

CCTV

Free no obligation  
survey and quotation

Andy Peddle 01233 224874 - Westwell

### COUNTY PROBATE SERVICES Easing the Stress of Bereavement

- We are practical and fast and above all sympathetic
- Less costly than banks and most solicitors
- Part of Malcolm Horton Chartered Accountants Practice so expert on Inheritance Matters and Trusts
- If there is no will can advise on Intestacy
- Free Initial Consultation

Contact: 01233 712112

[Info@countyprobateservices.com](mailto:Info@countyprobateservices.com) [www.countyprobateservices.com](http://www.countyprobateservices.com)

Accredited by ICAEW C004168781

## Westwell Community Watch Scheme

By the time you read this, Christmas will be over and 2017 upon us. So as well as wishing you a healthy and peaceful New Year can I suggest that you make one of your New Year Resolutions action to review the measures you use to protect yourself from Identify Theft as we increasingly use the internet in our daily lives for shopping, banking and managing our affairs.

Did you know

- Fraud & cybercrime cost the UK nearly £11bn in the past year
- That equates to approximately £210 per person over the age of 16 living in the UK, but represents only reported fraud and cybercrime to Action Fraud.
- Victims of online crime are losing an average of £523
- 39% of people who said they'd been victims of online crime said they hadn't reported the incident – meaning that the overall amount of money lost by the UK could in fact be even more.

Figures from Action Fraud October 2016

Identity theft occurs when a person or organisation acquires personal information about someone and uses it to their advantage, usually for financial gain. The information used could be someone's name, date of birth, current or previous addresses, National Insurance number, bank or credit card details or social media account. Often the information is used to commit fraud, such as obtaining loans, credit cards or a mortgage. Someone may also be able to order goods and services in your name or obtain passports and driving licences with your personal details. Victims of identity fraud may not even be aware that they have had their identity stolen until they try to take out their own loans or mortgages and find that they have a very poor credit score or unexplained debts. They may also receive invoices for goods and services they had never ordered and demands for payment and/or summons from debt collection agencies

Kent Police have produced an excellent guide of how to protect yourself and a useful list of important contacts. View them on the Police and Community Safety page of the Westwell Community website: [www.westwell.org](http://www.westwell.org)

### 2-WATCH-4

From the Kent Police Rural Crime Team – December 2016

So far the month has been a relatively quiet one. Locally early in the month two individuals were caught trespassing on private property in Watery Lane with Lurcher type dogs but when apprehended no poaching equipment was found so their details were taken and they were released. The police are also aware of the nuisance caused by unauthorised 4x4 off-roading activity in our area and will be intervening as appropriate. Further afield plant machinery valued at £71,000 was stolen from a farm in Igtham including a yellow Boxer mini Skid Steer and a grey and red Takeuchi mini digger. Any information should be reported through 101 quoting Reference YY/27239/16

contd on p18

### JO'S HOME FROM HOME IRONING SERVICE



**PROFESSIONAL, RELIABLE,  
AFFORDABLE**

Hate ironing, let me ease your stress  
£10 per hour. (Minimum order £10).

Folded or on hangers  
Local Collection service available.

Please call for details: 07860 442898

### Kilby's Chimney Sweep

All Types of Fires and Stoves  
Swept Using Brush and Vacuum



Pots, Cows  
and Birdguards  
Supplied and Fitted.

07756 007428 / 01233 840948

ICS Registered - Fully Insured  
Certificates Issued

### French Polishing Furniture & Antique Restorations

Some Upholstery Repairs  
Old Furniture Refurbished

Gordon Forster

35 years experience

01233 712665

07973440309

[www.rga-forster.co.uk](http://www.rga-forster.co.uk)  
[gordon@rga-forster.co.uk](mailto:gordon@rga-forster.co.uk)



### High Quality Painter and Decorator

for all your domestic needs



David Farnfield

Excellent Westwell reference  
available

[www.davidfarnfield.com](http://www.davidfarnfield.com)

07710 130275/01233 750450

### CHIROPODIST

CHRISTINE GRIFFITHS

MSSCh MBChA

HPC reg

FOOT CLINIC

Mon - Sat including evenings

Home visits available

Tel: 01233 664702

07958 328525



### PARISH HALL RENTAL

Would you like to hire the Westwell Hall  
for your next event? Equipped with:-

Full Catering Facilities,  
Stage with lighting and Piano



Rates from - £8 per hour

Table and chair hire also available  
(to take away)

Please contact:

Doris Cackett (01233) 712016

[doriscackett@btinternet.com](mailto:doriscackett@btinternet.com)



# Letter to the Parishes

Greetings to you for the New Year from Rev Richard

Have you noticed that there is a great importance attached to a name ?

History abounds with the names of people who affected its course drastically, for example Columbus, Alexander the great, Elizabeth 1, Luther, Calvin, Florence Nightingale, Mother Teresa, Churchill, and so on ! All of these names are written into the history books, as people who stepped out in time and for a time they lit the paths of mankind. The names that are applauded today may be forgotten tomorrow.

BUT ---- 2 thousand years ago a man stepped out on the scene of time, to break the stony silence of 400 years when man had not heard from God. In Bethlehem the babe was born and heaven's choir sang "Glory to God in the Highest peace on earth good will toward men" Yes there was a name that the world awaited to hear – Jesus !

"Where is He who has been born King of the Jews?" asked the Magi. looking for a young child destined to be King of the Jews. (Matt 2; 2) Now, in itself that would not be a very great thing. Somewhere alive in the UK today there is probably a child who is going to be Prime Minister some day. But nobody really cares about this, or sets out to find them or honour them.

It is clear however that Herod got the message; these fellows are not searching for a mere, ordinary, human successor to him. They are searching for the final King, to end all kings. Matthew in his Gospel, does not tell us about the shepherds coming to visit Jesus in the stable. His focus is on foreigners coming from the east to worship Jesus.

He portrays Jesus at the beginning and ending of his Gospel as a universal Messiah for the nations, not just for Jews. Here the first worshippers are wise men not from Israel but from the East - perhaps from Babylon. They were gentiles. And at the end of Matthew the last words of Jesus are, "All authority has been given to Me in heaven and on earth. Go therefore and make disciples of all the nations."

Luke shows God influencing the entire Roman Empire so that the census comes at the exact time to get a virgin to Bethlehem to fulfil prophecy with her delivery. Matthew shows God influencing the stars in the sky to get foreign Magi to Bethlehem so that they can worship him.

This is God's design. He did it then. He is still doing it now. His aim is that all the nations (Matt 24:14) - worship His Son. This is God's will for everybody at your work place, in your neighbourhood and in your home. At the beginning of Matthew we still have a "come-see" pattern. But at the end the pattern is "go-tell". The magi came and saw. We are to go and tell. There is no sermon, no sentence; there is no society, outside of Christ. For as calcium is to lime, as carbon is to Diamonds, as truth is to history, as the blood is to the vein, as the sap is to the tree, as the tide is to the ocean, and sunshine is to the flower, so is Christ to the heart of society and the soul of Man.

Everything revolves around Jesus. Does your life revolve around Jesus, His teaching and promises of eternal life ?

Richard

For a longer version of this letter, please see Pew News.

*Richard*

## Etc

### Coffee at The Wheel Inn

Coffee at The Wheel, **Friday 6th January** from 10.30 - 11.45am. Before coffee there will be Iona Eucharist at 10am in St Mary's

### Charing & District Local History Society

**The Story of Gold:** Speaker: *Jill Leyland*

Why gold has played the role it has and appealed to people across civilisations and throughout the ages.

**14th January** at Charing Parish Hall. 7.45pm for prompt start at 8pm

### Christmas Bazaar

I would like to give a really big thank you to all who helped with the Bazaar and to all of you who came to support. It really is a whole village event and this year a glittering start to the festive period.

We raised nearly £870 so it is well worth all the hard work.

*Happy New Year to you all*

**Penny Knatchbull**

### St Mary at Christmas.

My heartfelt thanks to Rosemary Heddle, Heather Lister, Rosie Lister, Penny Knatchbull, Barbara Spens and Sarah Stevenson for making our beloved St Marys look so beautiful with their artistic creations of greenery, flowers and candles for our Christmas services.

Also the tree which stands tastefully decorated in the tower a joint effort after the service on December 11th. Great teams. **Joan Richards**

### Book Club December 13th.

Our last meeting for 2016! Our group grew in this year and we read some fantastic works. This meeting was about Jan Morris, any work by the writer/journalist. We combined the meeting with a lovely 'pot-luck' meal at Joan Richard's. No turkey but some excellent snacks. There were 9 of us. Our thoughts were with Mary-Anne for her loss, we all loved Kip, and Myrtle and Barbara who felt unwell.

Hoping some sunshine will come into their lives to warm them up. The titles read were about Venice, Florence, The British in the Indian subcontinent, Spain and the Hashemite Kings (the Arab World). Such varied subjects, typical of a journalist, all very well researched and very enjoyable in format. Titles one could dip into and pick up at random. Beautifully -written, and excellent travel books. The findings on the role of Western powers in Eastern countries raises many issues and makes us wonder about the wrong-doings, all in the name of 'civilising', though ultimately about power derived initially from trade. That is certainly evident in the story about the East India Trading Company. The importance given to Arms Trading over human rights came into a vivid discussion.

Our January read is 'Under the Tuscan Sun' by Frances Mayes. Second Tuesday in 2017. Meet at the pub unless otherwise arranged. Happy New Year. Pray for peace, and good reading with friends!

### 1st Charing Scout Group

What a year 2016 was! The group has started fundraising for our new headquarters and we are hoping to make a start on the foundations as soon as the weather improves. Cubs celebrated our hundredth birthday in lots of ways. For me the highlight was us all renewing our promise on stage in the middle of the pantomime in Margate, flanked by the two ugly sisters.

We are so grateful for the help and support of our community. Our main resolution for 2017 is to make sure we keep ourselves focussed on the young people while still working flat out to raise money.... Happy New Year **Terry Lister** 07748818660

gsl\_charingscoutgroup@hotmail.co.uk



**Westwell Church Services for January**  
**www.g7benefice.org**

**Sunday 1st: Naming of Jesus**

8am Holy Communion

**Friday 6th:**

10am Iona Eucharist

**Sunday 8th: Baptism of Christ**

11am Iona Eucharist

**Sunday 15th: 2nd Sunday of Epiphany**

8am Family Service

**Sunday 22nd: 3rd Sunday of Epiphany**

11am Eucharist

**Sunday 29th: Presentation of Christ in the Temple**

8am Holy Communion - Charing

10.30am Benefice Communion - Pluckley

**Tuesdays:**

9am Charing – The Eucharist

7pm Charing Heath – Prayer and Bible Study

**Funeral**

Angelina Lilian Kathleen Strudwick died on Tuesday 4th October 2016 aged 80. Her funeral took place at St. Mary, Westwell, followed by burial in Westwell Cemetery, on Thursday 27th October 2016.

**Last Messy for a While**

In Charing Church Barn, (its free!) January 22nd 3.30 - 5pm. Theme, Jesus and the Children. Messy Church is one of the fresh expressions of worship introduced into G7 by Sue Starkins and later developed by Mim and me. It is a non church based get together for parents and children under 10 to develop team working and personal achievement based on biblical themes using crafts, activities and games. There are songs and prayers on a common theme developing a thought for the day; we always include a bible based story- who can forget Cecil the lost sheep? And we finish with a light meal that we can enjoy together. Messy has been based in Westwell and Hothfield village halls so far but the expenses are getting greater so we are moving into Charing Church Barn on January 22nd where there are fewer

overheads and more families who can walk to the meeting.

We also have to reconsider the organisation of Messy. At the moment Mim and I run the meetings, organising activities, providing refreshments and developing crafts. However Mim will be moving on soon to pastures new and the family support we have depended on will not be available for long. So after this Messy will be taking a rest to reassess our approach. We would love to start up again before Easter with a dedicated support team and lots of families, but we can only do this if you can help. If you think you'd enjoy being involved, either every month or now and again please contact Heather Lister [hlist@hotmail.com](mailto:hlist@hotmail.com), 01233712981 or Mim Oliver [miriamjoliver@gmail.com](mailto:miriamjoliver@gmail.com) to find out more.

**St Mary Westwell**

Following the departure of both Bob and Chris, the pattern of services held throughout the Benefice has had to be looked at – the current number is, sadly, unsustainable. From January 1st the following services will be held at St Mary's, happily we will still have a service each week.

1st Friday: 10am Iona Communion (no change)

1st Sunday: 8am Communion service using the Book of Common Prayer (change)

2nd Sunday: 11am Iona Communion -no change

3rd Sunday: 11am All Age service (change)

4th Sunday: 11am Communion service (no change)

5th Sunday: Benefice service in one of the churches (no change)

**Church Cleaning Rota.**

**Cleaning etc.** Christmas Team



## Memories of Christopher Pitt - contd.

Our enduring memory of Kip is of someone with boundless generosity and zest for life as well as natural ability as an entertainer. He was so good that Gordon thought for several years (when quite young) that it was the real Sid James who came on to the stage in Westwell village hall! We have him and Mary Anne to thank for years of wonderful tennis at Hurstway as well as the chance to cool off in the swimming pool afterwards. These are cherished memories. There is now a big gap in our lives, which unfortunately can never be filled. Kip is irreplaceable but we are so fortunate to have had him as part of our lives for so long and to have Mary Anne keeping many of these memories alive. Together they were a wonderful partnership. As a family, we are very grateful to have known him. *Jo and Helen*

As a child I always thought of Kip as a rather glamorous figure, a bit like James Bond. Perhaps it was the sleek BMW he drove, which seemed to glide past our farm gate. Or perhaps it was his love of skiing -- or his impressive jack-knife dives. Kip helped me to improve my diving technique as a child, by holding up the pool net and getting me to dive over it, while he raised it higher and higher. Later in life, I came to appreciate Kip's sense of humour and warmth. He and Mary-Anne have been neighbours on Dunn Street since before I was born, and they have always been a key part of what makes Dunn Street feel like home. As well as always having a giggle with Kip, he was also incredibly kind. One day, when I decided I wanted a peg loom -- and to try out some weaving -- he very patiently listened to my instructions, and made me a peg loom in his workshop. He seemed to have all the time in the world, though I am sure that was not the case. Dunn Street won't be the same place without him... *Jennifer*

**Kips "Shed"**

A shed at the bottom of the garden is a great place to sit, contemplate and watch the world go by. Kip's shed was special. It was situated at Dover dockyard and took the shape of a 30-foot sloop made by Beneteau. As can be imagined this was not a normal boat but was fitted out with many gadgets that Kip had ingeniously invented to make things safer or go faster. Kip looked for crew from time to time and as a keen sailor I was keen to help whenever I could.

The most memorable trip was the two of us on a day sail to Ramsgate. The sea was calm with a favourable wind setting us on a direct course to our destination. We flew along on a beam reach. Lovely!!

Half way there Kip went down below to make a coffee and came back on deck with two steaming cups and a couple of Kit Kats. We dived in with gusto, the fresh air giving us a real appetite. My Kit Kat didn't taste too great but I persevered as Kip was smiling and seemed happy with his. Shortly after this Kip suddenly got up and spat his biscuit over the lee rail into the sea followed quickly by me. Looking down I noticed the remains of the chocolate had a fine green film all over it and was well out of date. We both burst into barrels of laughter and kept giggling about it all day.

Kip's boat really was a mans shed!!

Kip's now gone on another journey but the one thing you can be sure of, his travelling companions are in for a real treat!!! *Andrew Saunders*



## Westwell Players

Hello to all you loyal supporters of the Players who live in the village or who receive a copy of this excellent publication by post or through the WI or wherever! This will be a short entry this month as there is so much to do to get ready for the great day, although it will be all over when you receive this copy. May I be one of the first to wish you all “A Very Happy New Year” . Our offering for 2017 is to be a show called “Life Goes On”, a very apt title for me particularly at this time and Neil (our Producer and Chairman) has described it to me as – and I quote “A series of sketches about life, love, work and cream cakes!” Sounds fascinating doesn’t it? I have read some of the sketches but not all and am longing to get along to a rehearsal or two – make the tea and watch to see how well it is going – soon after Christmas. That is a promise. Finer details re the tickets will be available next month but this month I can reveal the dates will be, Thursday, Friday and Saturday the 9th, 10th and 11th March at 7.30pm in our Parish Hall. Unfortunately, due to some of the language, this show is not deemed fit for children, sorry about that. Once we get the rest of the details, and to make things even easier – tickets will be available from Doris Cackett on 01233 712016 or by email at [doriscackett@btinternet.com](mailto:doriscackett@btinternet.com) – please put ‘Westwell Players tickets’ as the ‘Subject’ on your email. I do hope you all received what you wanted most for Christmas and that you haven’t broken any or at least – all – of your New Year Resolutions. Make one of them to come along to see the new show and support the Players in their latest venture. Best wishes to you all. If any business would like advertise their business or services in the Show Program for a small fee, please send an email for pricing and more info to [secretary@westwellplayers.co.uk](mailto:secretary@westwellplayers.co.uk).

*Mary Anne Pitt*

Please may I take this opportunity to thank the village for the kindness all the residents have shown me after Kip died. I have been overwhelmed by so many kind folk, stopping me to commiserate or writing a note or adding a few kind words to their Christmas cards. The service in the church went without a hitch thanks to the hard work and dedication of the Vicar, the Organist, the flower arranger, and the Church Wardens, this was much appreciated by the whole of Christopher’s family. Country Funerals were such treasures, words are not enough; the wonderful touch of coffee and tea in the Parish Hall before the service, thanks to those lovely ladies who served that with such kindness and skill. How very fortunate I feel to live in such a kind and caring community. I musn’t leave out the care shown by all at the Crematorium too. Love to you all and may you have a great 2017

*Mary Anne*

## Memories of Christopher Pitt - contd.

We first met Kip when he and Mary Anne hosted the starter course of a Westwell Safari Supper, only a short time after our moving into the community. The champagne flowed freely but the warmth of his welcome and the generosity of his hospitality was more intoxicating than any “bubbly”.

Although he visited us on another Safari supper occasion we were privileged to share part of his last, tragically short, respites when, during this summer he joined us for the Mad Hatters Tea Party that had been “won” by David Harding at the last Auction of Promise. Pimms, croquet and afternoon cream tea were the order of the day. Kip enjoyed them all and his contribution to the men losing dismally to the ladies at the ensuing croquet competition is a moment in history. His wit, warmth and generosity of spirit on that afternoon were undiminished by his pain and discomfort. We shall always fondly remember it and him. *Tony and Wendy Bartlett*

Kip was our wonderful neighbour. Full of fun, a little bit naughty, kind and an excellent host. We will miss his wit, waistcoats and the sound of his chainsaw. God bless and it was a privilege to have you in our lives *Penny, Edward and Savannah*

Kip thought it was a great idea to have some of the male members of the Westwell players to dress up as french waiters and form a barbershop group to sing to diners at a dinner play. He lead us in the quest for close harmony. Unfortunately the harmony was, at times, a little too close for ear-comfort! However, we had really great fun doing it. Thanks Kip. *Martin Wyatt*

One abiding memory of Kip I have is when delivery something to Hurstway, me on my buggy, dog in tow, on arrival Kip came out with his newly finished double bass, followed closely by Mary Anne with a camera, I shall cherish the resulting photograph always. *Carolyn Thorneloe*

We went to Kips thanksgiving service last week, we had never seen the church so full, why wasn’t it a surprise? We have been neighbours of Kips for nearly 50 years, he was always so friendly, helpful and generous with his time. He was a man for all people, didn’t matter who you were, Kip would spare you his time.,He did so much for Westwell village, in fact you could say he was Westwell, as we drive into the village, we are greeted by the wonderful village sign that Kip had made. You knew the village play/ pantomime would always be humorous and brilliant, why, because Kip was a leading person in it. Our children now aged 41 and 38 still remember the wonderful Christmas stories that Kip told them when they were young, what an impression he made on everyone that was lucky enough to be a part of his life, however large or small that part might be. Kip, will be missed by everyone that knew him but here in Dunn Street, we will miss him driving up past us and giving us a wave or stopping for a chat. *Howard and Cherry*