



The Wheel

4th May - Reggae and James' Birthday!

10th May - Mexican Night

17th - Fish on Friday

25th May - Quiz night (Saturday)

31st May - Tapas Evening

Contact: 01233 712223
info@thewheelinnwestwell.uk

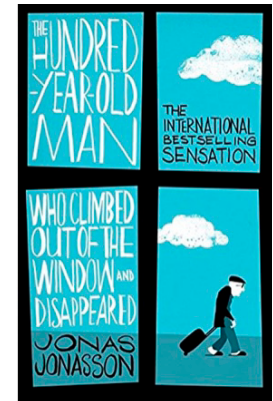


THE WESTWELL EYE

195

May

2019



3rd May
13th May
14th May
14th May
25th May

10.30am Coffee in The Wheel
1.30pm Art Group
11am Book Club - The Wheel - p13
7pm Players AGM
7pm Quiz - The Wheel

May 2019

SUNDAY	MON	TUES	WED	THUR	FRI	SAT
2	3	4	1	2	3	4
3rd Sunday of Easter 8am Holy Communion 3.30-5pm Messy Church parish hall	6	7	8	9	10	11
12	13	14	15	16	17	18
4th Sunday of Easter 11am Iona Eucharist	7pm Fitness 1.30pm Art Group 7pm Fitness	Book Club - p13 7pm Players' AGM	11am Fistepts - Dance as U 6	Re.FT. 9.15am Plates 7.15pm WI Meeting	10am Iona Eucharist 10.30 Coffee Wheel	
19	20	21	22	23	24	25
5th Sunday of Easter 11am Family Eucharist	7pm Fitness		11am Fistepts - Dance as U 6	European Elections?? R.F.W		
26	27	28	29	30	31	June 1
6th Sunday of Easter 11am Eucharist	7pm Fitness			Re.FT. 9.15am Plates 7.30pm Hall Management		

From the Editor's desk...

What a lovely sunny, hot Easter we had, but as I write this my goodness it's cold!

Read about the Lorry Parking on page 14 and do your bit to make it permanent. Also on page 14 is a piece telling you about Westwell's Classic and Vintage Car Show in June – save the date.

In the centre pages there is information about each of your parish councillors. There will not be an election as not enough people have put their names forward.

Page 1 Photographs

Heather Lister receiving the Westwell Citizenship Award trophy from George Horne. The Award is made every two years. Heather was the uncontested winner for researching and writing the biographies of Westwellians who fought in WW1, and for organising the Poppy Trail including the Poppy wall in the church for 2018 Remembrance and the flags around the parish marking where they lived .

Picture of relatives or friends of Josef Dygryn in Westwell Cemetary.

April's book club book cover.

Litter pick Yes, they are just bags of rubbish but these are some of the 13 bags picked up during a litter pick by three parish councillors along Watery Lane recently. Tarmac noticed and by the next day had done a litter pick around and outside their site. Thanks Tarmac. Let's keep Westwell as litter free as we can. If you want to do a litter pick contact the parish clerk. We have some high viz jackets to share.

Carolyn Thorneloe 

The views of any contributor to this publication may not necessarily be those of the editor and team, nor can the Westwell Eye accept any responsibility in connection with any companies or organisations mentioned or any advertiser.

Correspondence to: Carolyn Thorneloe, Gaoler's Retreat, 5, Faversham Road, Lenham, Maidstone, Kent ME17 2PN.Tel: 01622 859376, Email: westwellye@gmail.com

COPY DEADLINE - 20th of the month

ADVERTISE YOUR BUSINESS IN THE WESTWELL EYE

Classified ads from £3 p/issue - Business block ads from £60 p/year.

Prices include free design, illustration and layout.

Copy & payment to be received by the 20th of each month.

Payable to:- The Westwell Eye, either direct to bank or cheque

Sue Wood, 14, Sandyhurst Lane TN25 4NS

Would you like to receive the Westwell Eye but don't live in the area?

You can now receive it every month by post. For an annual subscription, simply send the editor your name and address and pay £8 to Sue Wood, cheque payable to The Westwell Eye

Printed by Print Junction - 01233 624462 - info@print-junction.co.uk - Drum Lane, Ashford, TN23 1LQ

Useful Contacts

Telephone Numbers

Age UK	642094
Ashford Volunteer Bureau	633219
Bees (swarming)	
Andy Bithell	740650 / 07933892413
Borough Councillor:	
Larry Krause	01233 643497
CAB	626185
Carers Support Group	664393
Childline Freephone	0800 1111
Cinema	0871 2208000
Citizens' Advice Bureau	626185
Cruse Bereavement Counselling	878225
Doctors (Charing)	01233 714490
(Hayesbank)	624642
Dog Warden	01233 330340
Hospital (William Harvey)	633331
KCC Community Warden for Hothfield, Charing and Challock, Dave Beckley	0797798199
CROP	01622 851200
Library (Ashford)	03000413131
(Charing)	713177
MS Therapy Centre	01227 470876
NHS Direct	0845 4647
NSPCC	0800 800500
Parish Hall Booking	01233 712016
	doriscackett@btinternet.com
Parish Council (clerk, Sue Wood)	623902
Pilgrims' Hospice (Admin)	504100
(Patient enquiries)	504112
PCC Secretary (Heather Lister)	712981
Police (rural matters only – crime should be reported on 101 or 999)	07980978202
Samaritans	610000
Shopmobility	621196
Solicitor (Thorneloe & Co.)	01622 859416
Victim Support	0845 30 30 900
Water Supplies Queries	0333 000 0002
Water Leak Line	0333 000 3330
Wealden Wheels	01233 840000
Westwell Community Website:	
http://www.westwellpc.kentparishes.gov.uk/	

AZ CARING SERVICES



For all aspects of care and support work,
Daily and Live In
 please contact Arthur and his team on
 07552 766428
 email: arthurzvik@hotmail.co.uk.
 Excellent local references

Oil Boiler Service

established 1987

Family friendly business
 Professional, efficient service



For servicing, breakdowns and
 commissioning contact: P&V Quenby Ltd
 01227 760428 www.oilboilerskent.co.uk

CHIROPODY & PODIATRY

+Nail cutting
 +Corns +Verruca
 +Hard skin Ingrown nails
 +Community group talks
 +On-site group Chiropody visits

Podplus Shop & Clinic
 Julie Rose Stadium, Ashford, TN24 8NG
 01233 660 851 www.podplus.co.uk

Kent Community Health NHS Foundation Trust,

What is Buurtzorg?

Have you heard of Buurtzorg? If you haven't, you might do so in the future. The literal translation of this Dutch word is neighbourhood care and refers to a system introduced in the Netherlands in 2006, which now has 10,000 nurses in 850 towns with 12 regional coaches and a support team of 45.

The system is spreading to other countries, including the UK. In Kent, Kent Community Health NHS Foundation Trust is trialling a pilot scheme to implement a Buurtzorg-style neighbourhood care team in Edenbridge, with another team being introduced to Charing.

So what is involved? Each Buurtzorg team is made up of nurses and health workers. The teams consist of up to 12 people looking after 40 to 60 patients and are self-managing, which gives them flexibility to spend more time with patients. Teams are expected to spend over 60% of their time with patients or working on patient casework, with the rest of their time dedicated to building up their skills. In the Netherlands administration is done via a support centre to shield the team from bureaucracy.

There are various advantages to this system of care. Teams can provide more intensive support to patients, reducing gradually as they learn to be more independent. Colleagues report greater job satisfaction, and patients report greater satisfaction with their care. Research also shows that in the Netherlands the system has a long-term cost saving of 30 to 40 per cent.

So will Buurtzorg work in the UK? It is still in the trial stage and there are some obstacles which are largely due to the differences in funding between the Dutch and English systems. 90 per cent of the money for community nursing in the Netherlands is from Dutch health insurance companies. In the UK, it is the NHS that funds health care but social care is funded largely through local authorities. So far in the Kent pilot sites, social care is funded by KCC for an initial period after which patients may be expected to cover this cost.

If you have any comments on this article you can contact me by email at kccht.governors@nhs.net or write to me at Governor Support office The Oast, Unit D, Hermitage Court, Hermitage Lane, Barming, Maidstone, Kent ME16 9NT.

John Fletcher Public Governor-Ashford

Planning applications.

The following applications have been received and will be discussed on 14th May:

19/00439/AS Court Lodge

New conservation rooflights; remove, repair and reinstate the cowl on all three kilns; rebuild masonry; relay felt, battens and tile kiln 3 roof; fitting of cable restraints; renew junctions between barn and kiln roofs; replacement external staircases; the insertion of a new toilet with small kitchenette; creation of a more defined store within the roof space. Insertion of new solid timber floor boards to the kilns to provide usable floors.

19/00519/AS Dunn Street House, Pilgrims Way

Construction of a new oak frame Orangery

TO LET

TO LET

TO LET

TO LET

TO LET

We are an Independent Residential Letting and Property Management company based in Ashford, Kent.

Established in 2004 Classic Lettings has grown to become a leading Residential Letting Agency in Ashford, the surrounding villages and the wider Kent area.

We offer Letting Only, Rent Collection or Full Management services.
Give us a call for a chat and see how we can help with your investment property.

Your property investment in trusted hands



Classic Lettings
Residential Letting Agent

01233 623534
info@classiclettings.co.uk
www.classiclettings.co.uk


CURTAINS

CUSHIONS

ROMAN BLINDS, ETC

01233-713130 07788-600262

DAWNLEONARD63@BTINTERNET.COM



SOFT FURNISHINGS
WINDOW TREATMENTS FOR BEAUTIFUL HOMES

Country Funerals

Ashford's only independant Funeral Directors

For a caring 24 hour service contact Leah Hutchinson

01233 712222
07708407229

Pre-paid funeral plan available
Yonderway, Westwell, Ashford, Kent TN25 4LE




CHIROPODIST

CHRISTINE GRIFFITHS
MSSCh MBChA
HPC reg

FOOT CLINIC
Mon - Sat including evenings
Home visits available
Tel: 01233 664702
07958 328525




Suzie's Care Service

Personal Care and Support
Sitting Service



07581 013899 / Suzieusher12@gmail.com



Thorneloe & Co.

Solicitors

Now part of Hallett & Co

Based in Lenham, we provide a friendly, high quality, personal service tailored to your specific needs.



For you and your family.....

- * Wills, Probate and Tax Planning
- * Trusts and Estate Administration
- * Lasting Powers of Attorney
- * Family Law and Employment Law
- * Buying and Selling Your Home
- * Court of Protection
- * Dispute Resolution / Property Litigation
- * Personal Injury

For you and your business....

- Agriculture
- * Commercial Property
- * Buying or Selling a Business
- * Business Contracts / Finance
- * Employment Law
- * Dispute Resolution / Property Liigation

01622 859 416

Lenham@Hallettandco.co.uk www.thorneloe.co.uk

St Mary's House The Square Lenham Kent ME17 2PH
Authorised and regulated by the Solicitors Regulation Authority Registered Number 50485



carpets direct

SELECTA TWIST

40oz WOOL TWIST
MADE FROM 80% PURE
NEW BRITISH WOOL

£19.95

sq.m
INCLUDING FITTING

VISIT US TODAY AT
SELECTA HOUSE
CHARING HILL
CHARING
KENT TN27 0NL
8AM - 6PM MON-FRI
9AM - 5PM SATURDAY

CALL 01233 714 999

CARPETSDIRECTCHARING.CO.UK

CARPET

WOOD

LAMINATE

VINYL

Boughton Aluph & Eastwell Parishes Neighbourhood Plan – Pre-Submission Consultation

Boughton Aluph & Eastwell Parishes Neighbourhood Plan – Pre-Submission Consultation
Boughton & Eastwell Parish Council has been working with residents to develop a Neighbourhood Plan for its parishes.

The project has entered an important phase of its development. We have brought together the feedback from our community engagement sessions and our household survey with the evidence gathered by our volunteers, into a draft Plan on which we are inviting views.

As part of the requirements of the Localism Act 2011 and Regulation 14 of the Neighbourhood Planning (General) Regulations 2012, Boughton Aluph & Eastwell Parish Council is undertaking a six-week consultation on the draft Boughton Aluph & Eastwell Parishes Neighbourhood Plan. As our close neighbour and one of bodies that we are required to consult, we are hereby seeking Westwell's views on our draft Plan.

A copy of the draft Neighbourhood Plan can be viewed or downloaded at www.parishplan.uk. A hard copy can be provided on request. The Parish Council will be holding a community exhibitions about the draft Plan on the following date:

Saturday **4th May**, 10.00am to 1.00pm at the Iron Room, Boughton Lees

We must receive your comments by **19th May** so that we can take them into account and make any necessary changes to the Plan before moving on to the final stage of drafting. Representations can be made online at www.parishplan.uk. Alternatively, please write to Rachel Girt, Parish Clerk at boughtoneastwellclerk@gmail.com or by post to Boughton Aluph and Eastwell Parish Council, Touchwood, Boughton Lees, Ashford, Kent TN25 4HY. All consultation responses will be published on the Parish Council's website.

1st Charing Scout Group



April and May are very busy times for us. The whole group is involved with selling race cards and cakes at the Easter Saturday Races and the St George's Day parade. This is very important as it is when all members including young people and leaders renew their promise.

Scouts had their cycle camp (rather than me). Beavers and cubs visited the big cats in Smarden. Beavers had their first sleepover in the new headquarters. Cubs are looking forward to annual camp at the end of May.

gsl_charingscoutgroup@hotmail.co.uk **Terry Lister**



WESTWELL WI

Our speaker this month was Katie Bewshear, a trained chocolatier. When her baby came along she moved from selling her chocolate at markets and craft fairs to teaching people how to make it. As well as demonstrating how to temper chocolate, Katie gave members a history of chocolate, from the beginnings in around 100AD when the Aztecs used it as a currency, through the mid-1700s when it became available to all, to 1847 when Fry's made the first chocolate bar and 1875 when the first milk chocolate was invented. She also informed members that the chocolate truffle was discovered by mistake when a cook accidentally took the chocolate out of the pan too early and the name ganache originated from the French word for imbecile due to this mistake.

Members were also given the opportunity to taste chocolate of various percentages, having first learned that eating chocolate was a 5 step process. It should have a glossy appearance, should make a snapping sound when broken, should be smelt and then looked at, finally put on the tongue for 20 seconds before eating it. (I wonder how many members were able to take their time over this!)

Jean Lester reported on the Annual Council Meeting at Lees Cliff Hall, Folkestone. It had been lovely to hear the singing of Jerusalem by so many WI members. Lynne Stubbings, Chair of the NFWI, in her address to the meeting mentioned that she had attended our Centenary celebration and commented on the attendance of The Queen. A photograph of Marilyn Warner receiving the 100 year certificate on behalf of Westwell WI had been taken. The certificate would be framed, and it was hoped to hang it in the Hall. The talk by Prue Leith had been very informative, relating her business life from starting by selling high quality business lunches, through teaching people to cook, up to becoming a novelist.

Members were reminded that payment for the Race Night to be held on Friday **10th May** at 7p.m. was required that evening so those who have still not paid please do so. Also a non-refundable deposit of £10 was required to be paid as soon as possible for the French trip to Montreuil-sur-Mer on Tuesday **2nd July**. The cost would be no more than £30.

The competition for a chocolate muffin brought only two entries – perhaps everyone felt daunted by the presence of a professional chocolatier!

Anyone wishing to know more about any of the above or the Westwell WI and what it means to be a WI member should email Catherine at westwellwi2015@gmail.com

Marilyn Warner

Next Meeting:- Thursday 9th May

Speaker:- *Natalie Harman - Resolutions*

Vote of thanks:-

Hostesses:- Sue Fowler, Liz Hewitt and Teresa Wood

Competition:- A bonny baby photograph



May on Hothfield Heathlands

On the heathland the golden gorse is still in bloom, buzzing with insects on a warm day, attracted to the tropical coconut scent. Slow worms bask in warm hidden corners. Fresh green tips are sprouting on the black-green of the heather. The tiny sundew is now visible in the upper bog. In the woods the April filigree of foliage is thickening. The woodland floor is awash with bluebells in places, thickly carpeted with sycamore seedlings elsewhere, most of which will be grazed off.

Bird song is changing as nesting continues and broods are nurtured. The blackbird was one of the earliest nesters, well before the migrants that arrived in April. The latter include warblers and hopefully the cuckoo. May is the best month to hear nightingales. Rough scrub on the heathland provides the safe environment for their nests, which they build on or near the ground out of sight of raptors and hopefully safe from wandering animals. However, they are easily disturbed. Male nightingales arrive from sub-Saharan Africa in April and sing through May and early June to defend their territory and to attract the females who arrive a week later. In July and August they and their juveniles will fly south.

Slightly bigger than a robin, the plain brown and buff nightingales (from Old English *galan*, to sing) are secretive and difficult to see, but can be heard in daytime as well as at night. The song is amazing, but less melodious than poets imply – more a complex and ever-changing long series of riffs, whistles, gurgles and trills. The louder the surrounding noise, the louder they sing. You can find the recording on the RSPB website to know what to listen out for.

The UK is at the northern limit of the nightingales' range. As warm-climate birds, they need days of high temperatures in summer, so it was expected that they would spread further north, taking advantage of the long days for feeding before migrating. However since the 1960's numbers have plummeted by 90%. Once very common they are now mostly limited to south east England and are on the UK red list for conservation. Lodge Hill in Medway with 85 pairs has 1% of the UK population. By contrast they are thriving on mainland Europe, including the more unkempt parts of urban parks, which shows that there is not enough wild space suitable for nightingales in our country.

Nightingales are insect eaters, as are many young birds as they develop. Insects on the heathland were out and about from very early in the year – dog's mercury flowers rely on tiny midges to pollinate them in March – and we hope for a good year for butterflies and moths as reports from volunteer surveys start to come in.

New human visitors in April included a family working through a book of walks in Kent, delighted to discover the heathland and planning to return to see the orchids in June.

Hothfield Heathland is open to everyone; trails are signposted and marked on entrance maps, along with the location of livestock. The noticeboard down the main slope from the Cades Road car park gives recent wildlife sightings. Please keep dogs in check, especially around children and livestock, and keep them away from the heather and undergrowth where they will disturb sensitive wildlife. Please remove dog mess, including in the Triangle compartment. For email alerts on the location of the livestock on Hothfield contact Ian Rickards ian.rickards@kentwildlife.org.uk or 01622 662012.

Margery Thomas

Kilby's Chimney Sweep

All Types of Fires and Stoves
Swept Using Brush and Vacuum

Pots, Cows
and Birdguards
Supplied and Fitted.



07756 007428 / 01233 840948

ICS Registered - Fully Insured
Certificates Issued

ANP Security



Supply, install and maintain
security systems, including

Intruder Alarms
CCTV

Free no obligation
survey and quotation

Andy Peddle 01233 224874 - Westwell

Airport Transfer & Chauffeur Service ETM Cars

Competitive Prices

Professional Service

Safe Comfortable Journey

Bottled Water Provided

Free Wi-Fi

Dave Hopper

01233 629551

info@etmcars.co.uk



KINGSLAND CARPENTRY

Flooring, Doors, Windows

Kitchen and Bedroom Furniture

Quality Bespoke Carpentry and

Cabinet Builds



City and Guilds Qualified

Call Simon (Westwell)

07899 968179/01233 612242

Egerton Gardens Open

1st May Sue Johnson, Keepers Cottage, Egerton House Road, TN27 9BD

8th May Margie and Chris Stevens, Barnham's Mill Farm, Barnham's Mill Road TN27 9BU

15th May Kate Fenwick, Court Lodge, Stonebridge Green Road, TN27 9AN

22nd May Claire Foinette, Frid Farm, Forge Lane, Egerton Forstal, TN27 9EJ

29th May Ruth and Raymond Shrubbs, Old Orchard Cottage, Stoebridge Green, TN27 9AP

HGV Overnight Parking restrictions – Important consultation.

From Drovers Roundabout to Charing the A20 has had an experimental trial banning overnight HGV parking, enforced by clamping enforcement. The 18 month trial expired on April 30th. Kent County Council have now prepared the detailed section by section Road Traffic Order which can make these HGV parking restrictions permanent once they have been consulted on. The Consultation opened on **19th April** and closes on **13th May**. The decision should be made at a ABC/KCC Joint Transportation Board meeting: the next scheduled one is **11th June**.

There is almost universal agreement that the trial has been a success. Along this 5 mile stretch of the A20 driving is safer; living is rural again; the environment is cleaner; drivers have better working conditions because they do now use the Ashford International Truck Stop which has opened an extra 200 spaces for overnight and over-weekend parking with facilities. The trial has been complicated: it has involved changing national regulations to make lorry clamping enforcement possible and affordable for ABC and KCC. The clamping has encouraged trucks to use the Truck Stop which is why it has been able to expand, provide a booking App and offer full range of facilities.

If you have noticed the change since the overnight parking ban came in do please write in; support is vital from residents directly impacted and anyone who has found the A20 safer and better since the overnight parking ban started on 30th October 2017. If the Road Traffic Orders are not approved we could be back to the previous bad times and no clamping enforcement. The Road Traffic Orders would make permanent the HGV overnight parking ban between 8pm and 7am along the A20 and down the roads off the A20 – exactly as they have been during the 18 month experimental trial.

For more details contact the Parish Clerk, Sue Wood on 01233 623902 or send your comment direct to KCC. Title your letter or email: Goods Vehicle Waiting Restrictions – Ashford, and make clear your A20 interest, as a resident or user. The KCC consultation instructions are as follows:

If you wish to offer support or object to the proposed Order you should send the grounds in writing to The TRO Co-ordinator, Schemes Planning & Delivery Team, Highways, Transportation & Waste, Kent County Council, Ashford Highway Depot, Henwood Industrial Estate, Javelin Way, Ashford, TN24 8AD or by email to TRO@kent.gov.uk by **12 noon Monday 13th May**.

Westwell Vintage & Classic Vehicle Show

Sunday **30th June** at 12noon, Westwell Village Hall & Playing Field in conjunction with The Wheel Inn. Beer Tent, Auto Jumble & Stalls. £5 per vehicle entry, email: grahutchinson@gmail.com or Phone 07726 559117 to reserve your space. Prize for most usable Vintage or Classic Vehicle.

Bring your own picnic, Sunday roast available at the Wheel Inn. Great Beers and Wines. General public £1.00 entry on the day.

All proceeds to St Mary's Church Westwell Loo fund

Godinton House and Gardens



Plant Fair

Sunday May 12th, 11am - 4.30pm

Local nurseries sell a range of seasonal plants

Entry to plant fair and gardens £5 adults
children under 16 free

House open for guided tours from 1pm

01233 643854

www.godintonhouse.co.uk

Simply Gardens



General Garden
Maintenance
One off or Regular

Andy Jenner
07584060447

info@simplygardensashfordkent.co.uk

Proud members of
Checkatrade.com
Where reputation matters

French Polishing Furniture & Antique Restorations

Some Upholstery Repairs
Old Furniture Refurbished

Gordon Forster
35 years experience

01233 712665
07973440309

www.rga-forster.co.uk
gordon@rga-forster.co.uk



B & B in Westwell The Lodge - at Glebe Cottage



Self Contained Annexe,
Twin Room, Ensuite Shower,
Continental Breakfast

£60pn,

<https://www.airbnb.co.uk/rooms/13655402>

Ring Geraldine Bortoli
01233 713919/07852 271886

High Quality Painter and Decorator

for all your domestic needs



David Farnfield
Excellent Westwell reference
available

www.davidfarnfield.com
07710 130275/01233 750450

PARISH HALL RENTAL

Would you like to hire the Westwell Hall
for your next event? Equipped with:-
Full Catering Facilities,
Stage with lighting and Piano

Rates from - £8 per hour

Table and chair hire also available
(to take away)



Please contact:
Doris Cackett (01233) 712016
doriscackett@btinternet.com



Letter to the Parishes

This year, with Easter being so late, we don't celebrate Ascension Day until the penultimate day of May. Over the last 24 hours, I've found myself reflecting more than usual on the Ascension. This could be, of course, because I've just started planning ahead for the Novena which, as in previous years, will take place between Ascension Day and Pentecost. It could be because I am writing this during Holy Week when the events of Good Friday and Easter Sunday are yet to unfold. I find that Christ's ascension into heaven and the subsequent coming of the Holy Spirit are the means by which we can better understand Christ's death and resurrection. But today, neither of those are the main reason that my thoughts have been drawn to the ascension.

Although you may not remember the name of the artist, I'm sure most of you will be familiar with the artistic depiction of the Ascension where the feet of Jesus dangle unceremoniously from the cloud at the top of the frame. Two Dutch artists, Juan de Flandes and Michel Sittow, both painting in the late 15th/early 16th century offer this interpretation. Juan de Flandes even represents the marks of Christ's footprints on the rock to show his point of departure. Rembrandt, painting in the 17th century, presents an altogether different interpretation. Looking at the scene as if from above, we see the disciples swathed in darkness while, on the same level as the viewer, Christ, bathed in light, is being taken up in a cloud surrounded by angels. Different styles, different interpretations but they all depict the disciples in much the same pose. There they stand, voiceless, shocked into silence, bereft, gazing up into heaven.

As the news unfolded of the fire at Notre Dame Cathedral I was reminded of these paintings. Those who came to gather on the banks of the Seine stood quietly, heads raised towards the cathedral in growing horror, huddled together, only the occasional gasp breaking the silence. Their collective grief was tangible. They felt powerless and bereft. One of the commentators tried to put the inexpressible into words. "The cathedral was there long before us and it was supposed to keep existing, probably for ever." Another reported "so many things we thought for certain have started slipping through our fingers." These feelings have been hard to process because it hasn't been clear what exactly they are grieving for. Someone asked "is it the building, the idea of a building, centuries of history, the irreplaceable spire or something else entirely?" Even if it is to be rebuilt, restored to its former glory, nothing will ever be quite the same again.

"As the disciples were watching, Jesus was lifted up and a cloud took him out of their sight." (Acts 1: 10) What must have been going through their minds that day? Nothing was ever going to be the same again for these disciples. Everything was about to change. And so for us today. The resurrection of Jesus Christ, his ascension into heaven and the coming of the Holy Spirit promise radical change. Through the resurrection we are new creations, filled with new life and ready to make a difference in the world.

Filled with resurrection power, let us wait expectantly for the coming of the Holy Spirit.

Sheila

Etc

Coffee at The Wheel Inn

Coffee at The Wheel, **Friday May 3rd** from 10.30 - 11.45am. All welcome.

WAGS – Westwell Art Group
13th May



Book Club April 2019

'The Hundred Year Old Man Who Climbed out of the Window and Disappeared' is the story of such a man and everything he got up to in his long life. He lives in a home for the elderly in Sweden but is fed up with the Matron who bosses him around and refuses to go to his own birthday party..so he escapes..wearing his slippers. At the bus stop he meets a man with a heavy suitcase and says he would look after it for him while the man goes to the toilet.. the bus arrives and the old man climbs into it with the case which he realises is full of money (from crime) so he manages to survive off that while being hunted by the police (after the home's concerns) and the gang of criminals, along the way he reminisces over his life, and there the truth/fantasy begins. What had he not done in his long life...he helped Franco during the Spanish Civil War, ended up in the US where he helped create the atom bomb. There he knew Harry Truman and later tried to help communist Iranians to kill Churchill. Was sent to Korea to help fight the communists. Got into Russia (Soviet Union) and was put in prison where he met Einstein's less clever brother..he managed to escape and ended up being sent by the Chinese to Bali...along the way in his long life different governments seem to be interested in him for his knowledge of how to make an atom bomb.

Our readers mostly enjoyed this story though some found the fantasy hard to believe and follow. Others found the events sad as they were reminders of the true events in the Twentieth Century.

The book has been made into a film (Swedish) and rights bought for an American version. Our next book is The Memory Garden by Rachel Hore. Tuesday **14th May**.

Charing History Society - 16th May
AGM

New courses at Godinton House

The Development of the English Landscape Garden – a 3 day Garden History course on **10th, 17th and 24th May**, 10am-3pm
Jane Austen and the Search for Home – a Study Day on **6th June**, 10am-3pm.
For further information or booking please contact Sally Ann Wardroper wardroper7@gmail.com or 07873726005.

Charing Gardeners' Society

Our next meeting is on Wednesday **15th May** at 7.30pm in the Church Barn. It will be a floral art demonstration and hands-on workshop based on the floral art classes in the CGS shows. Containers and plant material will be provided, but feel free to bring your own as well. CGS members can pick up a free pelargonium plug and pot to grow on and enter in the July show. All welcome, £3 for non-members includes a cuppa and a chance to chat after the talk. Raffle, seed-swap and plant stall, for which contributions always welcome. Annual membership is a bargain at £3 and includes our 2019 Annual, packed with articles, show schedules and details of members' events. Check out our Facebook page for news and photos of recent events and further information about the society see: <http://charinggardeners.org.uk>

Parish News

Westwell Church Services for May
www.g7benefice.org

Friday 3rd

10am Iona Eucharist

Sunday 5th: 3rd Sunday of Easter

8am Holy Communion

3.30pm Messy Church - parish hall

Sunday 12th: 4th Sunday of Easter

11am Iona Eucharist

Sunday 19th: 5th Sunday of Easter

11am Family Eucharist

Sunday 26th: 6th Sunday of Easter

11am Eucharist

Every Tuesday

9am Charing – The Eucharist

7pm Charing Heath – Prayer and Bible Study

May Special Services

Christian Aid - May 12th

6pm Charing – Ecumenical Service.

This year's focus will be on the women of Sierra Leone. All are very welcome.

Ascension Day – May 30th

10.30am Charing – Benefice Eucharist. All are welcome to come and wait with the disciples and reflect on Christ's ascension into heaven.

Family Church in April

Messy Sunday 5th May 3.30 to 5pm in the Parish hall. Theme A Fishy breakfast. Fun, games, crafts and activities with a bible theme finishing with tea. Suitable for under 10s with an accompanying adult.

2nd June Messy theme Heading for Heaven
All Age Service Sunday 19th May at 11am in the church. An informal service with ideas to interest everyone, both young and old. Cakes and Coffee to follow.

This month's Coffee collection will be in aid of Childhood First. A local charity supporting by care, education and treatment of children with severe emotional and behavioural disturbance as a result of early life trauma. They also provide support to their adult carer networks.

Pilgrimage to Canterbury

Pilgrimage from London to Canterbury stopping off in Charing for an overnight stay. Having rested their feet for a while, they gather together in St. Peter and St. Paul Church, Charing for a Communion Service. I have had the privilege of taking part in this service over the last few years and each occasion has been memorable. Money raised through sponsorship and other donations goes towards the work of The Connection at St. Martin's, a charity that helps over 200 homeless people in Central London every day. This year they will arrive in Charing during the afternoon of Sunday **26th May** and the service will take place at about 6pm (although this may be subject to walking conditions).

All are welcome to come to take part in this service where there will also be an opportunity to donate to this worthwhile cause.

Farewell to Bishop Trevor

We have always enjoyed Bishop Trevor's visits to the benefice during the 9 years of his time as Bishop of Dover. He has been here to licence new clergy, for confirmation services, Mim Oliver's licencing as Youth and Families Worker as well as taking part in many other special services and events. In addition to this, he has been a regular visitor at all of our church schools in the benefice. We have all benefited from his warmth and encouragement. Now it is time to say goodbye to him as he and his wife Margaret begin their retirement. There will be a Diocesan Farewell on Saturday **11th May** after Evensong in the Cathedral which begins at 4pm. All are very welcome. If you would like to make a financial gift to thank Bishop Trevor and Margaret for their ministry, you can contribute to their retirement collection. Please send cheques payable to 'CDBF – Bishop Trevor Farewell' to the Finance Team at Diocesan House, Lady Wootton's Green, Canterbury CT1 1NQ.



Westwell Players

Players news is brilliant, we have a new arrival – and it isn't a lamb. Sita Turner, one of our up-coming stars, has given birth to a beautiful baby boy who makes them a family of four with two sons! All Players welcome the new arrival. There is talk of another baby on the way in our ranks but 'Mum's the word' as it isn't yet official news – watch this space! Our news of Margaret who fell down the stairs after our last production in December last year is better, she has at last been allowed to go home and is managing to cook one handed as she is very weak still having damaged both her hand and her back rather badly. We wish her well and continued progress.

We had a good play reading this month with lots of laughs and a few more members came along to swell our numbers which was great. On **14th May** we are holding our AGM in the Parish Hall at 7.30pm. The Players Cup will be presented to the person who has been judged to have improved the most during the past year. We have lots of possibilities so come along to the Hall at 7.30 to see who the lucky winner is! We are still hoping to produce a pantomime in November but it will have to be one with a small cast unless we suddenly hear of a lot of new members who are longing to be in a pantomime.

If you know of anyone who is interested, please get in touch – 01233 714241 is the number to ring and please leave a message on the answerphone with your number and I will get back to you.

By the time you read this, spring will have sprung and we will all be enjoying some warmer weather!

Mary Anne Pitt 714241

Cleaning Rota.

Cleaning. Sarah Stevenson

Flowers. Penny Knatchbull

Brass. Suzanne Pier



Easter Flowers

St Mary's looked stunning for Easter! Well done to the eight of us who gathered on Good Friday, including the three under 25s, and thank you too to those who helped with Easter flowers by donating a calla lily in memory of a loved one.

My continued thanks to cleaners and flower arrangers.

Sarah

Church Matters

The Annual Church meeting held on Palm Sunday elected Sue Wood and Martin Wyatt as Churchwardens for the next year.

The PCC elected members are:- Stephen Bates; Saskia Leigh-Pemberton; Heather Lister; Tanya Scott-Adie; Evan Thomas (Treasurer)

Deanery synod reps are Penny Knatchbull and Joan Richards. Village Trail flags will be collected this month. If you want to keep yours please take it inside. The display will remain in church for the next few months.

There will not be a Parish Council election this year due to the number of candidates being equal to the seats available.

Welcome to our new councillors– Jane Richards and Graham Hutchinson.

All meetings start with an open forum

where you are invited to come with any comments/problems.

The Parish Clerk is Sue Wood. Please feel free to contact her for any information regarding parish matters.

susanwood@uwclub.net 01233 623902



Christine Drury. I have lived at Potters Corner for 36 years and have been a parish councillor for 16 years. Westwell is a wonderful parish community. It is good that both sides of Sandyhurst Lane are now included, the Wheel and the Hare & Hounds are thriving and we shall soon have 3 new houses in the village and the overnight lorry parking ban will be permanent. **07796930430 or christine.drury@bopenworld.com**



Graham Hutchinson. I have lived in Westwell for 11 years having previously lived in exotic locations from Grenada to Harrogate. I'm co-director of Country Funerals with my wife Leah and in my spare time you can find me jamming on my saxophone or walking my Bassett Hounds. I have supported events since I arrived in the village such as the fete and have organised my own events including a classic car show and Glastonbury in the Garden with proceeds going to the parish. I am not one to shy away from giving my opinion! I will ensure this carries through within my position as a councillor. I will make sure the best interests of the parish are taken into consideration with every decision I make. **grahutchinson@gmail.com**



Jane Richards. I moved to the Parish of Westwell in 1981 when I married Trevor. We farm at Lacton Manor Barn, have brought up three children and are now enjoying being grandparents. I work for the NHS in a mental health hospital in Maidstone. I love our friendly village and enjoy walking in our beautiful countryside. I feel privileged to live here and would like to contribute something to help maintain our precious environment **jane.richards58@googlemail.com**



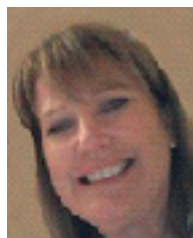
Ron Butcher has lived in Sandyhurst lane since the 1980s and has represented the Parish since 1999, is a Trustee of Action with Communities in Rural Kent and also a member of the Kent Association of Local Councils executive. Taught Physics (and unofficially auto-engineering) at Norton Knatchbull grammar school for many years. Wishes to improve the well-being of the residents of the whole parish and improve facilities for young families. Believes the preservation of our local environment to be of great importance. **ron.butcher@uwclub.net**



Tony Bartlett. Wendy and I have lived in Ashford for 30 years and moved to Westwell in 2010. I set up the Westwell Community Watch Scheme. I have also represented Westwell PC on the Ashford branch of the Kent Association of Local Councils. I now look forward to helping take our newly enlarged parish forward - improving quality of life, resisting creeping urbanisation and protecting our rural character remain my priority. As Chair of the Sandyhurst Lane Residents Association, I am looking forward to building strong ties between Westwell PC and SLRA. I am Trustee of the Ashford & District Home-Start children's charity. **bartlettanthony@gmail.com**



Hello, I'm **Lucy Farrington.** I live in the village and have been a Parish Councillor for 5 years, during which time I have been active in helping to ensure the ongoing operation of The Wheel Pub, registering the Church Green as a village green, improving parish hall acoustics, arranging litter picking and setting up www.westwell.org. If you'd like to get in touch please contact me at **lucyfarrington@yahoo.co.uk**



Tessa Wyatt. I have lived in Tutt Hill, with my husband Martin, for 39 years. I have served on Westell Parish Council for nearly 30 years, 9 of these as Chairman. I have recently left my longstanding job in Clinical Governance with the NHS. I am interested in protecting the best we have in Westwell, whilst looking to the future and hoping our Parish maintains its individuality. I welcome the challenge of successfully integrating the new members of our parish from Sandyhurst Lane. I currently serve on the Staffing Committee. **01233 712150 tessa_wyatt@hotmail.com**



Clive Bainbridge. I have lived in Westwell for 33 Years. I worked in local government for 43, the last 30 years working for KCC. I was Head of the Trading Standards Service for 14 years and for the last 5 years Director of Community Safety and Regulatory Services. After retiring in 2011 I became a Parish Councillor, and am also chair of the Parish Hall Management Committee. I live on the Pilgrims Way and love the rural nature of our village and Parish. I believe the Parish Council should support sensitive change, to ensure our community continues to be vibrant, whilst fighting at all times to retain the beautiful rural nature of our environment. **07720 908001 clive.bainbridge@gmail.com**



Tim Lister Aside from a 10-year break living in Lenham, I have lived in Westwell since the mid-seventies. I have played cricket for the village and helped with the likes of the fete over the years. I can often be seen either walking the dog or enjoying other countryside pursuits going on in and around the village. I am proud to call Westwell my home and look forward to having the opportunity contribute to its wellbeing going forward. **07785 713803 or tim@shmck.co.uk.**