

Butterfly Identification - Sheet 1

Large White

Wingspan 2 1/2 inches (64mm)



Often known as the cabbage butterfly because of its love of this vegetable, it can be easily spotted by two bold black dots on its white wings.

Caterpillars are mottled green and black.

When to look out for it: April to September

Meadow brown

Wingspan 2 inches (50mm)



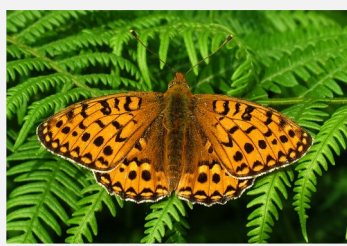
Perhaps Britain's commonest butterfly. It is unusual in that the females are brighter than the males with 'eyes' which stand out from the orange patches on the upper wing.

They have only four walking legs but on sunny days are always on wing.

When to look out for it: June to September

Fritillary

Wingspan 2 1/4 inches (57mm)



There are a number of different kinds of fritillary but all have similar light and dark brown mottled wings which makes them sometimes hard to identify as they tend to fly fast, skimming and soaring between flowers and thistles.

They are seen mostly in midsummer

When to look out for it: July and August

Holly Blue

Wingspan 1 1/4 inches (32mm)



This small butterfly has delicate blue wings which is unique.

Each year there are two generations which feed first on holly buds and then ivy in hedgerows and clearings

When to look out for it: April to May and July to August.