

Butterfly Identification - Sheet 2

Orange Tip

Wingspan 1 3/4 inches (45mm)



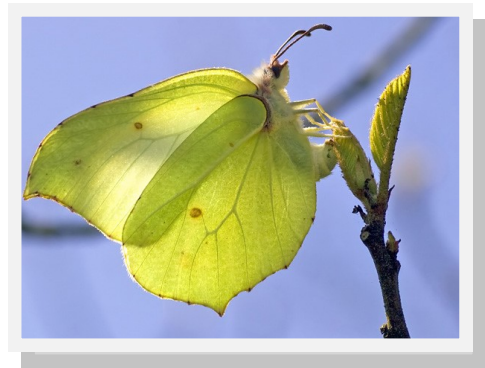
The males are easily recognised by the bright orange patch at the top of their white wing. Females lack the orange patch and are more mottled.

They are mostly found along roadsides and damp, flowery meadows in early spring.

When to look out for it: April to June

Brimstone

Wingspan 2 1/4 inches (57mm)



Brimstone is an old word for sulphur which is yellow.

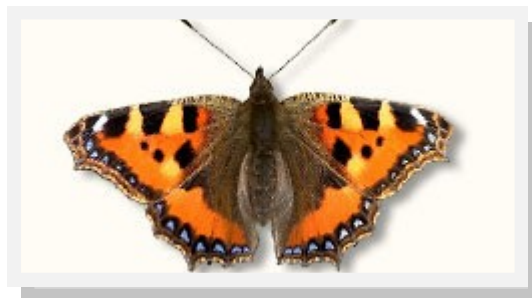
Its bright colour also reminded people also of butter and it is probable that this is how butterflies got their name.

It is often the first and last butterfly of the year to be seen

When to look out for it: March to October

Small Tortoiseshell

Wingspan 2 inches (50mm)



One of the commonest British butterflies it is easily recognised by its brightly speckled orange and black wings.

It feeds on thistles and nettles where it always lays its eggs

Caterpillars are yellow and black.

When to look out for it: March to October