

FRIENDS OF KINGSBURY WATER PARK

www.FriendsOfKingsburyWaterPark.org.uk

Volume 5, Issue 1

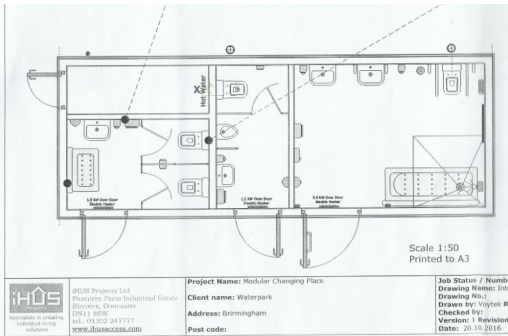


Friends Projects

Two new projects instigated by the Friends are nearing fruition.

Firstly a Changing Places Toilet

Original Plan -



(www.changing-places.org) is to be built in the Park, replacing the old toilets on the Broomey Croft side. Hopefully, this should be up & running about Easter.

Although not in the ideal position, it will place The Park at the forefront of Parks in Warwickshire for such toilets. The

siting is due to HS2 & it's effects on the Park, as siting the Toilets on the Main site would not be possible till HS2 compensation & plans were known.

The second project is a Water Birds Board to be placed by the Lake View Play area along side Bodymoor Heath Pool, this has been especially designed with children in mind. This has been part funded by the Friends & Tame Valley Wetlands. Again, hopefully in site at Easter



Inside this issue:

<i>Friends Projects</i>	1
<i>Recent & Forthcoming Events</i>	1
<i>Stories from the past 6 months</i>	2
<i>2017 Calendar & Sand Martin bank</i>	2
<i>Contact & Group Aims</i>	3
<i>Amenities</i>	3

Forthcoming Events

TameFest, Tamworth—May 27th

BioBlitz—July 7th-8th. Bioblitz is a way of monitoring and surveying wildlife, which all the family can enjoy.

Bee Event—13th August 2017. A live Beehive will be shown & craft activities for children will be available

Recent Events

See Page 2 for various events that have taken place since the last newsletter.

Another Litter Pick was undertaken in mid March, along the River Tame; where we collected 28 bags of rubbish.

Stories from the past 6 months

Live Bee Event, August 2016

Kingsbury Water Park buzzes in the sunshine!

On a hot, sunny, somewhat breezy day, visitors to Kingsbury Water Park enjoyed a range of fun activities with the theme of bees and their importance in the natural world.

Mark Hunt, Ian and Katy Kapsis of the Nuneaton and Atherstone Beekeepers Association brought one of their bee hives along capturing the interest and imagination of visitors to the Old Barn Café.

Mark, Ian and Katy spent the day answering questions about bees,

explaining their life cycle and how they pollinate vital crops produced by our farmers.

Friends of Kingsbury Water Park provided colourful craft activities including making homes for bees in your garden, badge making, games, quizzes and painted pebbles with distinctly black and yellow markings!

The Great Gnome Massacre, September 2016

Sad news from Echills Wood Railway.....

Vandals have massacred the

gnome village so we are calling out to all you gnome owners out there!! Please donate your gnomes.

Halloween, October 2016

Entering into the spirit of Halloween, our volunteers put on a variety of activities in KWP on Saturday, 29th October. Over 60 youngsters joined the volunteers to decorate cakes, have their faces painted, colour in masks and make finger puppets at the park's annual celebrations. The adults had as much fun as the kids!

Friends 2017 Calendar

The Friends of Kingsbury Water Park's produced another calendar this year, the 2017 calendar was ready late in 2016.

The calendars were available from the Information Office at the Water Park; also The Echills Wood Railway Ticket Office (when the trains were running) and on the other side of the Park at the Granary Tea Room by the Broomy Croft Childrens Farm.



New Sand Martin Bank

The newly reconstructed simulacrum sand-martin nesting bank. This is by the willow hide, opposite Kingsbury Hall. The hide overlooks Hall Pool; however I notice that Tame Wetlands seem to have renamed it Skan Pool. I prefer Hall Pool & so shall remain as such!



Contact

Sue Stallard
&
Terry Stallard

Phone: 01827 873570
Mob: 07768 124929

Email: suestallard@yahoo.co.uk
terrystallard@yahoo.co.uk

For a chance to win an annual car pass, please complete a park survey at

<http://www.surveymonkey.com/s/VBZVPZR>

Next Friends Meeting at The Water Park Education Centre on Wednesday, April 5th, 2017 at 7 pm.

Everybody Welcome

The group's aims are –

1. To be the voice of park users. Promoting, lobbying, fundraising, liaising, and negotiating on behalf of park users.
2. To help manage, protect, and improve the park for the benefit of the flora, fauna, visitors, and park users.
3. To promote, assist, and even instigate, activities within the park for the benefit of park users.

Visit our website at -

www.FriendsOfKingsburyWaterPark.org.uk

Like our FaceBook page -

<https://www.facebook.com/pages/Friends-Of-Kingsbury-Water-Park/204482556428537>

Amenities at the Park

- Old Barn Coffee Shop/café
- Information Centre and Gift shop
- Disabled facilities
- Three mobility scooters for hire
- 5.7 km (3½ miles) of permissive bridleway for horse riding. Permit needed.
- Many water activities (e.g. pedalos, sailing, model boating jet biking, power boating and fishing)
- Dogs allowed under control
- 2 children's play areas
- Nature reserve with 4 bird hides
- Echills Wood Railway, 7¼" gauge miniature railway
- Guided walks and events programme
- Ranger led Children's Birthday Parties
- Camp Site managed by The Camping & Caravanning Club (tel. 01827 874101)
- Broomey Croft Children's Farm (tel. 01827 873844)
- The Granary Tea Room at Broomey Croft (next to the Farm entrance)