



LOCKTON PARISH CRYER

Defibrillator

The defibrillator is now fully installed in the village telephone box. If you need to use it in an emergency just take off the cover and take the bag to wherever you need it, press the 'on' button and it will give you spoken instructions on what to do. There is also a laminated card in the phone box with instructions (for hard of hearing etc). The equipment is designed to only deliver a shock if the heart has stopped beating.

We are organising a professional to come and train in CPR, it will be after the holiday period in Sept/ October and we will leaflet and e mail you with further details.

The defibrillator would not have been possible without the help and generous donations of many of you. Heart felt thanks to all those who raised/ donated money or made things to sell in aid of the fund.



Big thanks go to :-

Janilaine and Kevin Mainprize from Lockton Tea Rooms for encouraging the community to make things and selling products commission free to support the fund.

The British Heart Foundation who helped buy the defibrillator.

BT who donated the phone box and on-going electricity to light and heat for the defibrillator.

The Community HeartBeat Trust who helped to source free paint from Crown.

Mike and Carolynn Nowill for their fabulous paint job on the phone box.

The Hunt for their generous donation from the harvest festival.

The Well Dressed Band for monies raised at their last barn dance.

The Parish Council for taking ownership of the phone box & defibrillator.

And last but by no means least to everyone in the village for their kind and generous support.

We hope we never have to use it and it just sits happily in the phone box as insurance.

If you would like further information, or to make a donation, please email juliewitte50@gmail.com

Julie

.....
The Parish Council would like to add a thank you to Julie Witte for all her work in getting this project started & in organizing everything. Also a thank you to Phil Witte who will be checking the equipment every week.



Lockton & Levisham Heritage Group

The AGM of the Group was held on 13 June. In light of the low membership the Committee recommended that the Group should continue to meet in a reduced, ad hoc form. This

was agreed by all. Annual subscriptions would be abandoned, the bank account closed and the remaining balance used to maintain the group until it is spent. The archive will remain in Levisham Village Hall and can be made available by arrangement.

The Group will continue to meet with other local groups until the Timeline Project is complete.

Newspaper extracts:

Malton Messenger 9 July 1876

Lockton. On Sunday afternoon a new harmonium was opened at the Church and a very effective sermon preached by Rev William Turner (Mrs Turner at the harmonium) to a very crowded congregation. The fund for the harmonium was collected by Mrs Owston and the instrument was supplied by Mr Jacques of Pickering.

Yorkshire Gazette 9 September 1844

George Hudson Esq (Chairman of the York and North Midland Railway Company) has bought the horse drawn Whitby and Pickering Railway for £80,000.

Malton messenger 10 July 1897

Pickering RDC. Estimates required for painting the mile and guide posts. Tenders sought for leading whinstone from quarries to Saltersgate Road. A debate held reference ordinary rates for team labour. Cropton, Levisham and Lockton councillors contending that in their townships the charges are disproportionately high:

One horse and cart with man 6/- per day

Two horses and cart with man 9/- per day

Three horses and wagon with man 12/- per day.

Website: www.locktonlevisham.co.uk

Ray Halmshaw 460008



Future meetings

Thursday August 25th

Stroke group tea

Wednesday September 7th

Life as a Jazz Singer – An evening of Jazz with Sue Kibby

Wednesday October 5th

Wreath making – A demonstration by Jo Purdy



LL's Bells

Since the last edition of the 'Cryer' we've played at the Levisham Garden Party for the Queen's 90th Birthday and had an enjoyable evening out with some members of the Poetry Group at the Willowgate Bistro in

Pickering. In the end we didn't help at Ampleforth College's performances of 'Noyes Fludde' as we couldn't support it for the 3 nights it was on.

We usually take a break at this time of year, but an opportunity to take part in the BBC's 'virtual orchestra' at the Last Night of the Proms means we're carrying on until the end of August. All the details are at <http://www.bbc.co.uk/programmes/p03m1dp>, but basically we're rehearsing the Toreador Song from Carmen, then we'll record a performance and send it off. We may or may not get seen during the performance on the night...

Finally we'll take our late summer break and will meet again during the first week of **October, Tuesday 4th at 7.00pm to 8.30pm and Friday 7th 10.30am to 12 noon**, at **Levisham Village Hall**. As I always say at this time of year, why not find something new, enjoyable and (sometimes) challenging to do once the dark evenings approach? New members are always welcome; you don't need to be able to read music, neither do you have to commit to both sessions, or, indeed, regular attendance. Phone me (Anne) on 460274 if you would like to find out more or come for a taster session. Lifts from Lockton can be arranged.

Anne Deebank

Lockton Artists Open Studios

28th May – 5th June has been hailed as an outstanding success!

Following the official opening at Lockton Village Hall by councillor Janet Sanderson on 27th May, the artists opened their studios to the general public.

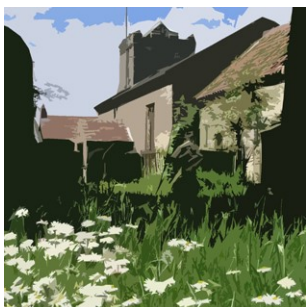
The response during the event was overwhelming, with over 300 visitors to the village hall exhibition and artists studios. Work was sold and commissions taken. Community spirit was exceptional and feedback was extremely positive and complimentary.

Thanks to all of you who offered your support and visited the venues.

Watch this space for future updates!

Lockton Parish Cryer online

The Cryer is no longer automatically sent to every household. A paper copy can be sent to anyone in the Parish who requests one – just give Jackie a ring (460398). If you would like to be sent a copy by email as soon as it is produced, please email Jackie (locktonpc@btinternet.com) to be added to the circulation list. The Cryer will also be set up on the heritage website www.locktonlevisham.co.uk.



St Giles Church

Dear Friends,

A letter will shortly arrive with you all about Lockton Parish Church's **Gift Day and Pet Service**, at **6pm on Sunday 11th September**. This has now become an annual fixture in Lockton's Church and social calendar.

The Pets' Service is straightforward enough: it is fun and it celebrates St Giles, our church's Patron Saint. The Gift Day is equally straightforward: St Giles' Church dates back to the 1200s. It costs money to keep it in repair; even more to keep it in *good* repair. A small group of worshippers continue to shoulder the responsibility of caring for this building and keeping it open for the village, and a Report from the church architect confirms how effective the work has been so far. However, he has alerted us to a number of defects in this ancient building and advised us to seek to mend now, rather than allow further deterioration which will prove even more costly. So the Gift Day letter asks you for financial help, but also suggests practical ways in which you might feel able to assist. I hope you will consider this request carefully, and feel able to respond positively.

Services at St Giles' over the next few weeks are:

Sunday 14th August at 10.30am: Holy Communion

Sunday 28th August at 10.30am: Holy Communion

Sunday 10th September at 6pm: Gift Day and Pet Service

Sunday 25th September at 10.30am: Holy Communion

Monday 10th October at 7pm: Harvest Praise

On **alternate Fridays** Morning Prayer is said in St Giles at **8.30am**, and the Holy Eucharist follows.

St Giles' is a wonderful church; a place where many find peace and stillness in this busy world. It is also a place where for 900 years or more Christian worship has taken place, babies have been christened, weddings solemnised and funerals taken. It is a building tied up not only with the village of Lockton but with the history of this nation. The ongoing work of care and conservation will help keep it open. I hope that you will feel you can help continue to support us in this valuable work.

Fr Antony Pritchett, Vicar
Vicar

Tel: 01751 472983

Email: vicar@pickeringchurch.com



Over the several years that we have been managing the wildflower meadow, we felt that it would be useful to occasionally survey the range of flowers in order to measure our success at encouraging plants to establish. With this in mind the National Park ran a survey training session for volunteers in late June, which Sue Slack and David Stephenson attend-

ed. We travelled to High Rigg Farm, High Dalby to learn the methodology, surveying a large meadow which had a small head of grazing cattle.

By working to a fixed method it will be possible to measure annual changes in the biodiversity of the meadow, while eliminating survey bias. The training also enabled managers of other meadows to learn the techniques and so make it possible to compare one meadow with another.

The survey technique involves following a zig-zag route across the site, stopping at fixed intervals and identifying those plants within a metre square grid.

The meadow at High Rigg was quite varied, from bog to dry slope and woodland fringe and, being lightly grazed, was not choked with grasses. The survey revealed a very diverse range of plants from horsetails to barren strawberries and lousewort. We also worked hard at identifying the myriad grasses which are incredibly varied and beautiful. Overall we found 50 different plants which was a fine result for a mature, well managed meadow.

In early July, the Lockton team met to use the same methodology on our own small meadow where we're still working to control the vigorous grasses. Overall, we found 28 species, with meadow and creeping buttercup being dominant. We were pleased to note that yellow rattle is still vigorous and seeding well as this is semi parasitic on the roots of grasses and helps to reduce their vigour, leaving space for other flowers.

We're now leaving the flowers to self seed before tackling the main late-summer cut, when all help will be most welcome.

If you'd like more information or would like to help, then please

contact David Stephenson on 01751 460252.



Lockton and Levisham Poetry and Prose House Group



The Poetry and Prose Group meets on the **last Wednesday** of the month except in December. From **April to September** the starting time is **7.15 pm**. Members take turns to host the meeting. To find out where the next meeting is to be held please phone 01751 460373 or 01751 460262. Everyone is welcome. Please bring along a couple of poems or extracts from a book to be read aloud.

Parish Council

The Parish Councillors are:

Chairman	David Stewart	460302
Vice Chairman	Jennifer Halmshaw	460008
Councillors	Liz Stead	460239
	Jenny Bentley	460417
	Mark Bentley	460143
Clerk	Jackie Edenbrow	460398
email	locktonpc@btinternet.com	

The minutes of recent meetings can be viewed on the Lockton & Levisham Heritage Group website at www.locktonlevisham.co.uk.

The next Parish Council meeting is on **Monday August 15th** at **7.30pm** in the village hall.

Parish Council News

Surface Dressing

NYCC have included Crossdale Road and Westfield Lane in their surface dressing programme for this summer. This can take place any time from August 8th to October 31st and will involve road closures for a day while the work is in progress.

The next Parish Cryer

Please could you let Jackie Edenbrow (460398) have any news or articles by **Friday September 23rd** for the next Cryer due for publication by the end of September, covering October & November.

SFH Country Show

Saturday, 23rd July, was our annual show at Saltersgate and it was fantastic to see so many attend the show from Lockton and Levisham.

The weather was very kind to us this year, being warm with only a light breeze, which was quite welcome after the high winds of last year!



We would like to say a huge thank you to everyone who entered classes, made wonderful cakes, pies etc for us and all helpers and visitors on the day.

Congratulations to local children Katie, Stephen, Chance, Megan and Abbie on winning first place prizes. Also, congratulations to Paula Robson who again won both trophies in the cookery tent – one for Best W.I. Member and one for Most Points in Cookery Section.

We strive to make this very much a local show and would greatly appreciate any ideas or suggestions for next year's show, please do not be shy and let Freda or Sheila know your thoughts. Ideas welcome from adults and children alike.

Thank you to all who came to support us.

Neighbourhood Watch



Recently there has been a lack of messages about incidents and crimes in the local area. This situation is due to changes in the system used to disseminate information.

The old 'Ringmaster' messaging system has now been switched off and the new North Yorkshire Community Messaging System (CMS) is in operation.

If you would like to be included in the emails sent out by both the Neighbourhood Watch & Rural Watch schemes please email Tony Edenbrow (tony.edenbrow@btinternet.com) with your email details.