

The Garden Room At Walton Lea Project



The Garden Room

This beautiful self contained log cabin is available for hire for:

- Meetings
- Functions
- Courses
- Away days
- And any other event

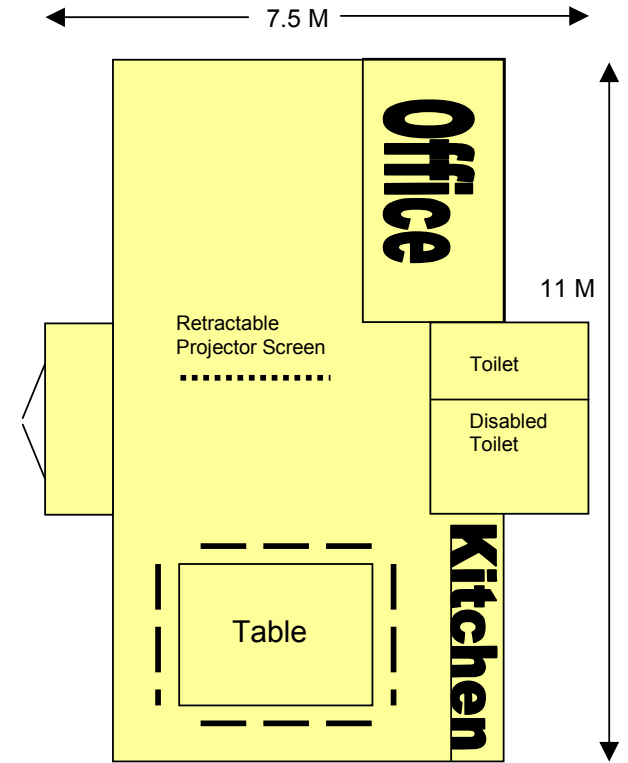
The Garden room is fully accessible for disabled people with dedicated parking and a disabled toilet.

Tea, Coffee and soft drinks are provided for your use in our dedicated kitchen area.

The room is large enough to fit 20 people comfortably and can be divided into two smaller sections if desired.

There are twelve dedicated parking spaces situated right next to the garden room.

We also provide an overhead projector and screen, a flip chart and Wi-Fi access.



Facilities and Booking information



Prices

Weekdays the garden room can be hired for
£12.50 an hour
Or
£87.50 for a full day

On weekends the garden room can be hired for
£20.00 an hour
Or
£140.00 for a full day

We also offer a buffet lunch priced from £6.00 per person

These prices are negotiable for regular bookings.

If you would like to view the room prior to booking then we can arrange that to suit you.

And please feel free to ring or e-mail us to check availability or for any more information.



Walton Lea Project is a charity providing work and learning for adults with disabilities.

You will be pleasantly surprised by our location next to a Victorian walled garden and you will be supporting a local charity.

So why not try our garden room for your next event?

The Garden Room

At
Walton Lea Project

Off Chester Road
Higher Walton
Warrington
WA4 6TB

Phone: (01925) 860143
Email: waltonlea@btconnect.com
Charity No: 1094989

How To find us



From Warrington

Take the A5060 and follow the road over Chester Road swing bridge.

When you pass the “Jahan” Indian restaurant on your left we are the next turning on the left (Small track with sign saying “Victorian Walled Garden”).

From Chester, Runcorn, M56

Follow the A56 through Daresbury, towards Warrington. We would recommend that you proceed to the “Jahan” Indian Restaurant then double back towards the M56 and take the first left as above.

To get to the Garden Room

Follow the road past the houses and through the wooden gates. Disabled parking is at the far side of the Garden Room