

Sunday 17th August. "Auction after 12 noon!"

EXETER RACECOURSE **EX6 7XS** Early entry 10am £3

BBR 'on the road' Entirely Unreserved Auction

Comm. 15% on hammer, immediate payment taken - we bring items to you. Start after 12 noon, take about 30+ mins.

Provenance stickers BBR is currently dispersing several collections - any from these carry initials to provide provenance: **NL = Norman Lewis**
KB= Kevin Boyle **CM= Chris Mortimer** **GM= Garth Morrison**



E1. MALMESBURY DAIRIES/ ISAAC & CO LD/ BOURNEMOUTH CREAM POT. T.t. 4.5ins tall, internal rim slot for cardboard disc. Exc A1

E2. BRISTOL HAMILTON. Dark aqua, 8.5ins long, early rolled lip & serif letters 'ROUGHSEGE & SUMMERS/ BRISTOL/ FROM J SCHWEPPE & CO/ GENUINE SUPERIOR/ AERATED WATERS'. Minor flakes! *Photograph does not really do this item justice - fantastic!* (KB)



E6. WELSH SEALED WINE. 11ins tall, 3 part mould, transitional type base pontil. Body seal 'J. H.' attributed to John Higgon (?) of Scolton Manor, Pembrokeshire. Undamaged. Very good. (CM)



E3. CARDIFF FLAGON DUO. 9.5 & 11ins tall, t.t., handled. Both 'RIDGWAY BROS/ 74 DIAMOND STREET'. Smallest dated 1911, tallest is a 'Botanical Brewers'. Very good. (2)



E7. TORQUAY narrow neck codd. 9ins tall, aqua glass. Front embossed 'Shapley & Austin/ Torquay' with central t.m. of light house. To rear 'Codds/ Patent/ London/ S.E./ 16'. Base embossed Barnett & Forster etc. Superb/ Exc/ A1. (GM)



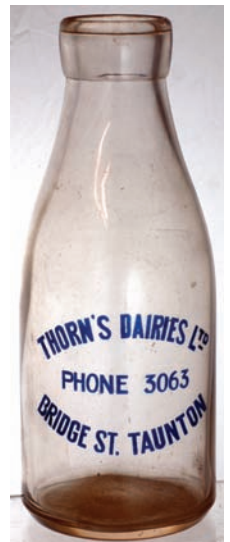
E4. E E BEVAN/ NEATH/ VALVE OF NEATH/ BREWERY. St, blue top g.b. Very good.



E5. GLASTON-BURY two handled jug 6ins tall. All white with various coloured transfers & two blue prints - Butleigh Court one side, Butleigh Cottage Hospital other. Undamaged/ Exc. (JR)



E8. LISKEARD footwarmer. Heavy stoneware curved shaped, flat base, 11ins tall. To front 'William George/ Fore Street / Liskeard'. Leaf design around opening stopper. Knob to dark brown top. Exc. (GM)



E9. TAUNTON milk bottle. Quart (?) 10 ins tall, clear glass, wide neck (for card closure), blue pyro 'Thorn's Dairies Ltd/ Phone 3063/ Bridge St, Taunton'. Exc/ A1



E10. G.B trio - each all white, cork closure 1. Malvern/ Ginger Stout (buckled belt & entwined initials). Powell p.m. 2. Stroud Brewery. Price p.m. 3. Moreton in Marsh. Price p.m. All very good. (3)

E15. PLYMOUTH beaker, 4ins tall, circular body ribbed. Overall detailed blue & white transfer (floral) with coat of arms in central shield & crown & ribbon with Plymouth motto. 'Registration/ applied for' to base. Some damage/ repairs. Extraordinary item? (GM)

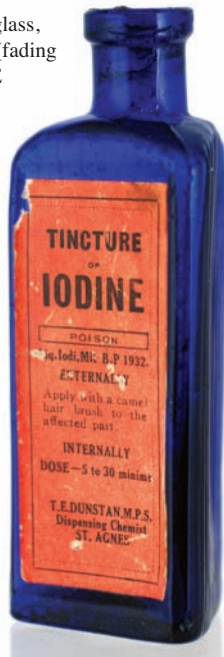


Tried • Tested • Trusted
www.onlinebbr.com
 more sales... more often

E11. ST AGNES labelled poison. Cobalt blue glass, triangular, 4ins tall, ribbed 2 sides. Printed label (fading red paper) for. 'Tincture/ of/ Iodine/ Poison... T E Dunstan/ Dispensing Chemist/ St Agnes.



E12. NEWPORT porter. T.t., cork closure, 9ins tall. Shoulder impressed 'H A Smith/ Wine & Spirit/ Merchant/ Newport'. Price Bristol p.m. Very good. (KB)



E16. BRISTOL beers trio, approx 9ins tall. 1. Dark green 'C E Beavis'. Heavy windmill t.m. 2. Red brown 'Ashton Gate/ Sunrise... Brewery'. Rising sun t.m. 3. Green glass Sunrise Brewery variant - more heavily embossed. Very good. (3) (CM)

E17. BARNSTAPLE quack cure, 5.5ins tall, bluey aqua. To front 'HICKINGS/ SYRUP of Tamarinds'. One side 'Hicking & Son/ Chemists Barnstaple' to other 'Cures Coughs and/ Colds on the Chest'. More images available for this lot - email: sales@onlinebbr.com



E13. SOUTH WEST g.b. duo. All white, cork closure. 1. Macfarlane & Co/ Weston Super Mare. Price p.m. 2. Cater, Stoffell & Fortt Ltd/ Bath'. Powell p.m. Exc/ A1. (2)



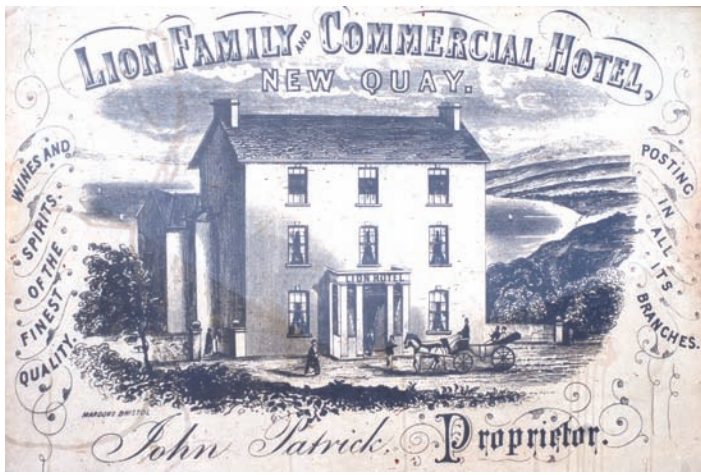
E14. SOMERSET handled mug, pinky orange outer glaze, 4ins tall, to front 'James Spencer/ High/ Littleton/ Inn' (hamlet of Hallatrow & Amesbury). To rear 'Print/ VR/ 575'. Body hairline (stable)



E18. BRIDGEWATER hip flask. T.t., handled, 7.5ins tall. Shoulder impressed 'TAYLOR & CO/ Wine Merchants/ Bridgewater'. 'Price/ Bristol' impressed to rear near base. Very good. (JR)



E19. WILLIAM 1Vth reform flask all over Rockingham glaze, 7ins tall, side handle. Very rare with handle. (DD)

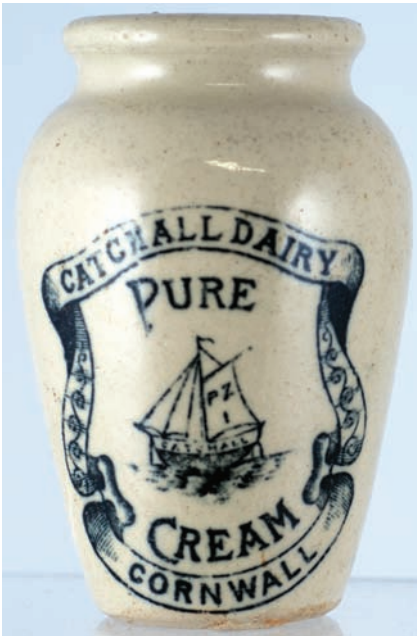


E20. NEWQUAY HOTEL framed poster, 29 by 41ins. Dark grey lettering & picture of early pub 'Lion family and Commercial Hotel/ John Patrick Proprietor' & lettering to side. Some marks.

E21. BRISTOL matchstriker. 5.25ins diam, circular base with pyramidal shape top, decorated all over in burnt orange transfers, 'Bristol. Soda Water/ Summer's' to each side with pictorial t.m. Superb - nay - fantastic! (JR)



E22. CATCHALL DAIRY cream pot. 4ins tall, off white. Large boat pict. to centre, outer lettering within burner '...Pure/ Cream/ Cornwall'. Very rare in tip top condition. Exc/ A1. (GM)



E23. TORQUAY sealed wine, aqua glass, 12ins tall. Around shoulders 'Imperial' & body seal (slight damage) 'Narracott/ Brothers/ Torquay'.



E24. EXETER g.b's group, all std., t.t. other 3 light brown/ beige 1. The Yacht Beverage, boat pict. Price p.m. 2. Kerswell & Grafton, man & lock pict. t.m. Price p.m. 3. W H Grafton Price p.m. 4. Ham's p.m. All very good. (4)



E25. DEVIZES soda syphon. Vibrant green glass, footed base. Acid etched 'Wodworth & Co Limited/ Devizes' within outer border. to centre pict. castle t.m. Very good. (GM)

E26. WARNERS SAFE CURE duo. Pint size golden amber. half pint red brown. Both examples with 'London' near base & featuring the large Safe trade mark. Both exc/ A1 (2) (KB)



PLYMOUTH g.b., std, all white, blue transfer 'Home Brewed/ Knapmans/ Ginger/ Beer/ Brewery West' & 'Plymouth'. Price p.m. Exc.



E28. INKS grp. Unembossed cottage, light turquoise square (Blackwood & Co to base), square faceted. 'Lyons Ink', bell & a rect. Plus wooden pen & nib. Good. (6)



CONDITION

Before bidding please ensure items meet your condition requirements - **INSPECT!**

On sale day **ALL** items sold **AS SEEN - NO RETURNS**



E29. HELSTON named kitchen jar. 9ins tall, wide neck, t.t. **Black** transfer 'From/ W G Roberts/ China Stoves/ helston'. Very good. (GM)

E30. TRIO of Plymouth items. 1. Plymouth Breweries annual outing photo, 1921. **2.** E & B R Noyce Scrap Metal merchants/ Kingsbrifge & Plymouth. **3.** Plymouth Daily Mercury pressed metal ashtray. (3) (GM)



E31. DEWAR'S WHISKY water jug, 5.25ins tall, **green** top, lower **tan** salt glaze. White applied sprigs - toper, hunting images etc. Doulton Lambeth base mark. Very good. .



E32. PORTSMOUTH soda syphon. heavy **golden amber** glass, with foot 'C Mumby & Co Ld/ Portsmouth' in outer band with large coat of arms to centre & 'by appointment to HM the King'. Exc (GM)



E33. BATH whisky jug. 9.5ins tall, elongated cylinder, t.t. top **dark brown**, rear handle. **Black** transfer to front 'Smith Bros/ and Co Ltd/ for/ Wines & Spirits/ Westgate Bogs'. Couple of insignificant base flakes (JR)

E34. EXETER cream pot. 2.75ins diam, heavy stoneware circular pot dipped overall in a **deep green** glaze. Front (blanked out) & over printed in **black** 'Please return to/ Hammett's Dairies Ltd/ Exeter'. (GM)



E35. SOUTHAMPTON g.b. duo. Both t.t., 1 crown cap. 1. Aylward's/ Winchester/ and/ Southampton'. pict. t.m. of King Alfred. 2. 'Itchan/ Mineral Water/ Works', couple of rear lip flakes. (2)



E36. PLYMOUTH coachman character style jug, rear handle. Overall **brown** with face and detailing in **green & cream**. Raised lettering to side 'Batten & Co's/ Compliments/ China Merchants/ union Street/ plymouth'. Very good. (GM)



E37. SOUTH COAST clear glass soda syphon duo. 1. 'Dartmouth Pure Aerated Waters' acid etched in buckled belt 'D' & arrow t.m. to centre. 2. 'W Biscombe/ Plymouth' in shield shape, entwined initials in centre. Good. (2)



E38. KLEGTORINE printed medicine boxes unused with original **brown** wrapper. **Black & red** print to all sides & price of '1/3' to each box end. Very good. (over 100+)

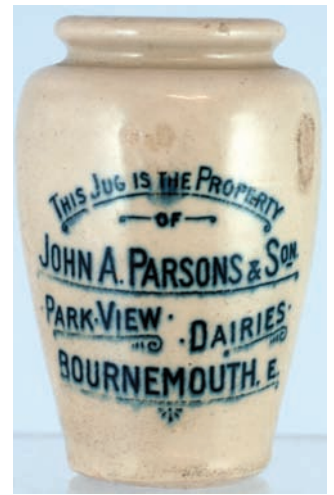


POSTAL (or email) BIDS
Should reach us no later than Thursday
prior - email/ tel to double check

E39. SOUTH MOLTON flat sided hip flask, t.t., rear handle. Shoulder imp'd 'L TANNER/ Wine & Spirit Merchant/ Sout Molton'. Rear near base imp'd 'G Hawley (?)/ Bristol'. Exc/ A1



E43. BOURNEMOUTH cream pot. 3.75ins tall, off white, black transfer 'This jug is the property/ of/ John A parson & Son/ park view Dairies/ bournemouth E'. Rear Scratch mark otherwise good.



E40. PLYMOUTH flat bottomed, 6oz, aqua hybrid. 'Dennifords LTD/ To the/ Royal Family/ Plymouth. Makers to base. Some inside brown base liquid - will washout. Good. (GM)



E44. PAIGNTON g.b. T.t, ch.squre cork top. 'Starkey, Knight & Ford Ltd./ The Brewery/ Paignton'. Indistinct p.m. 'Pearson'? Good.



E45. LARGE t.t. salt glaze, pewter lidded jug, 9.5ins tall. Very well modelled sprigs all round of drunks/ toppers/ windmill & hunting scenes all round. Very good.



E41. PLYMOUTH pot lid & base. Pot lid 'Woods Areca nut/ 1/6/ Toothpaste.../ Plymouth'. With outer border design. Pot lid base transfer to side 'Balksnill & Co/ Plymouth'. Good. (2) (GM)



E42. TAUNTON mineral patent, 8.5ins tall, aqua, 6 base retaining dimples. Embossed 'J F Ewing & Co/ taunton' with large initials to centre. Very good. (GM)



E46. ST AUSTELL ch, t.t., g.b. 'Hicks' & entwined initials to centre. Very good. (CM)



E47. PICTON CASTLE black glass sealed wine, 10.6ins tall. Three part mould, base pontil plus 'Powell Ricketts' attribution. Crisply struck body seal. Very good. (CM)

**ABSENTEE BIDS
to be with BBR
no later than
Thurs 14th Aug**

or email:
sales@onlinebbr.com



E48. TIVERTON cream pot. All over tan, 4.1ins tall. Front black transfer 'Best Devonshire/ Creameries/ Tiverton Junction/ Devon'. Very good.

E49. PLYMOUTH soda syphon. Vibrant electric blue, vertical ribs, front acid etched 'Masons/ Table/ Waters Co/ ...' Very good.



E50. BRISTOL flagon duo.
1. Two gallon, t.t., rear handle. Shoulder imp'd '2/ S G Bees/ Wine & Spirit Merchant/ 45 Redcliff Street'.
2. 1 gall, black transfer to shoulder 'Pickup/ & Co/ Bristol' plus front transfer & date '1914'. Very good. (CM)

E51. CORNISH cream pot. 3.25ins tall. Very unusual stumpy shape, speckled browney cream glaze, black transfer 'Palmer's Stores/ Limited/ Special/ Cornish Cream'. Very good. .



E52. PLYMOUTH cardboard lidded carton. 3.25ins tall. Delightful black - blue printing all round 'Three towns Dairy Ltd' plus smaller (2.7ins tall) carton printed in green 'Double/ Cream/ ...4fl oz'. Good (2) (GM)

E53. EXETER lemonade/ water jug. Waisted shape, t.t., 7.8ins tall, rear handle. Black transfer to belly 'Quench/ your thirst/ with/ Haydon's/ Mineral Waters/ Exeter'. Price p.m. Exc/A1



E54. NEWTON ABBOT hot water bottle. 10ins tall, red - brown stopper & top carrying knob. Black transfer 'Middleton's/ China Stores/ Newton Abbot'. (GM).



E55. SIDMOUTH cream cylinder. 3.25ins tall, 3.6ins diam. Unusually wide pot, outer glazed in a mid brown glaze, black transfer 'J PEPPERELL/ Belle Vue Dairy/ Sidmouth'. Exc/ A1



E56. SOMERSET cider mug. 4.1ins tall. White handle on a 'sturdy' blue glazed mug. Black transfers to front 'Good Health/ Taunton Cider' & top hatted gent, to rear 'Taunton Cider Co Ltd/ Norton Fitzwarren/ Somerset'. Bristol Pountney p.m. to base. (JR)



E57. BRISTOL jug. 8.8ins tall, deep red brown salt glaze, rear greyhound handle. Fabulous detailed sprigs all round & impressed across shoulder 'George Hall. 1860'. Listed as a tobacconist in Bristol in the 1860's. A very rare named & dated piece - most spectacular. Exc/ A1





E58. SIDMOUTH
g.b., ch, t.t. - strong/
bright green top,
bodily transfer red to
front in black
'Vallance/ Sidmouth'.
Bourne Denby p.m.
Exc/ A1

**CONDITION
REPORTS**
**Absentee
bidders can tel:
01226 745156**
or email:
**sales@onlineb
br.com up to
3 days before
the sale**



**E59. WESTON
SUPER MARE**
**transferred
bkue oval dish,**
7.9ins long.
Centre **blue**
transfer
'George's/ High
Street/ Weston
Super Mare/ 4d
allowed for this
dish/ when
returned'.
William Taylor
Copeland blue
transfer mark to
base plus

'Copeland' impress'd over a crown - c.1850-67. Edge nick otherwise very good.



E60. TAUNTON teapot. Stoneware (**buff/ cream** body) with applied
sprigs - leaves & bowl of flowers (both sides). Impressed lettering (in
black) one side 'Mrs E tea/ taunton'; Exc /A1



E61. DEVON named enamel sign. White lettering on **bright blue**
background. 'BUTT'S/ PURE/ SEEDS'. Mentioning stores in
Barnstaple, Plymouth, Newton Abbott & Taunton. 'Patent enamel Co'
to bottom R. Some enamel chips, mainly outer edges, otherwise good
sheen.

BBR 'On the Road' Auctions
FREE colour pdf 2 weeks before
download off: www.onlinebbr.com

**Pre-order ALL or ANY off BBR's NEW
website & they'll zoom to you when done**

*BBR's remaining 2014
'On the Roads':
Chessington 14 Sept
Attleborough 19 Oct
Watch BBR website or
magazine for 2015
'fixtures'!*

