



# THE WILLIAM SHIPLEY GROUP FOR RSA HISTORY

Newsletter 33: June 2012

## HM THE QUEEN'S DIAMOND JUBILEE



### TO HER MAJESTY THE QUEEN

**WE THE FELLOWS** of the Royal Society for the encouragement of Arts, Manufactures & Commerce beg leave to express our admiration & affection for Your Majesty on this sixtieth anniversary of your accession as Queen & Head of the Worldwide Commonwealth of Nations.

¶ We recall that throughout this period you have served as Patron of our Society & that for five years before that you were our President.

¶ In both these offices Your Majesty frequently visited the Society's House. As President you enlivened the difficult post war years with your sincere interest in our work, notably in our pioneer Exhibition of Humorous Art in 1949, & the Exhibition of Exhibitions in 1951. As Patron in 1958 you accepted our highest award, the Albert Medal, named after your great great grandfather the Prince Consort, & presented to you on our behalf by your husband, H.R.H. the Prince Philip, Duke of Edinburgh, our President from 1952 until 2011.



Anne, Princess Royal, President

¶ When commemorating the bicentenary of our House in 1974 you paid us the highest of compliments saying of the Royal Society of Arts that "more than any other body in the United Kingdom it establishes the national standards of culture & civilisation". This mission we strive to this day to fulfil.

RSA Chair, Board of Trustees

¶ With renewed expressions of our loyalty & love we present to Your Majesty this Address.

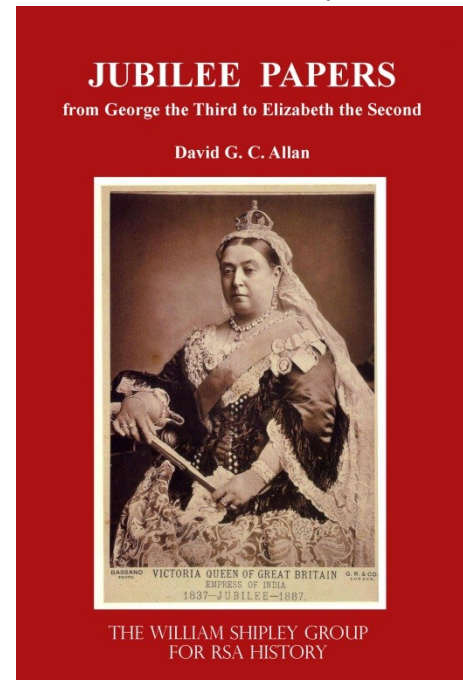
Chief Executive

As RSA Honorary Historical Adviser, and President of the William Shipley Group for RSA History, David G.C. Allan was asked to compose an Address for presentation to Her Majesty The Queen to mark her Diamond Jubilee. As well as following the customary forms of respect to the Sovereign he added some more intimate touches expressing 'admiration and affection' and 'loyalty and love'. Like earlier addresses presented to Queen Victoria and King George V by the RSA, he has included a summary of the Society's links with the monarch, and the monarch's work for the Society. Derek Birdsall RDI, who had redesigned the Book of Common Worship in 2000, converted the text into a printed Address reflecting contemporary needs of communication rooted in the tradition of British printing design. He used Gill Sans Italic type designed by Eric Gill RDI and the version of the Royal Coat of Arms drawn by Reynolds Stone RDI. The Address was then signed by HRH The Princess Royal as President of the RSA, Luke Johnson, Chair of the Board of Trustees and Matthew Taylor, CEO before its presentation to HRH The Queen.

WSG Occasional Paper no.22 *Jubilee Papers from George the Third to Elizabeth the Second* by David G.C. Allan contains the proceedings of the RSA symposium commemorating Queen Victoria's Golden Jubilee, with additional papers on the Jubilees of King George III (1809), Queen Victoria's Diamond Jubilee (1897), King George V (1935) and Queen Elizabeth II's Silver (1977), Golden (2002) and Diamond (2012) Jubilees.

An anthology of commemorative verse by poets, such as Tennyson, Kipling, Masfield and Motion, and numerous illustrations of Jubilee medals, loyal addresses and souvenir glass and pottery items, complement this collection of papers.

With 103 pages and 47 b/w illus this paper is available from the Honorary Secretary at a cost of £8.50 plus £1.50 p&p a copy. Please make cheques payable to the William Shipley Group for RSA History.



### Commemorative Coronation rug, 1953

The brief for the carpet section of the RSA's Industrial Art competition for 1952 required an original design for a commemorative rug, suitable for the sitting room of a small house, to mark the forthcoming Coronation. Judging the entries were O.P. Milne FRIBA; Prof R.D. (Dick) Russell RDI, J. H. Mellor MSIA, and J.P. Glass. They awarded seventeen year old Raymond Portman from Kidderminster School of Science and Art for his 'simple, interesting and dignified solution'. Lawrence Avery of Northern Polytechnic and Ruby Mackie of Kidderminster School of Science and Art were commended for their excellent submissions but the jury felt both candidates used too many motifs.



Raymond Portman's prize winning design for a commemorative rug, 1952

### Queen Victoria's Journals

In this year of her Diamond Jubilee HM Queen Elizabeth II has made available on-line the complete collection of Queen Victoria's journals from the Royal Archives. Dating from Victoria's childhood to her own Diamond Jubilee these thirteen volumes are written in her own hand. The Queen has expressed the hope that this historic collection will make a valuable addition to the unique material already held by the Bodleian Libraries at Oxford University and will be used to enhance our own knowledge and understanding of the past'. <http://www.queenvictoriasjournals.org/>

### Exhibitions

**Diamonds: A Jubilee Celebration.** Buckingham Palace 30 June – 7 October 2012 (excluding 9 to 30 July 2012)



This exhibition, which is part of the Summer Opening of the State Rooms at Buckingham Palace, will show the many ways in which diamonds have been used by British monarchs over the last 200 years. An unprecedented display of a number of The Queen's personal jewels will be on display – those inherited by Her Majesty or acquired during her reign, and how many of these stones have undergone a number of transformations, having been re-cut or incorporated into new settings.

**British Design 1948-2012: Innovation in the Modern Age.** Victoria & Albert Museum, South Kensington, London SW7 2RL. 31 March - 12 August 2012

This major exhibition documents the transformation of design in Britain from the post-war 'Austerity Games' of 1948 through to the London Olympic Games of 2012. Drawing on the V&A's unrivalled collections, the exhibition will include product design, fashion and textiles, furniture, ceramics and glass, theatre design, graphics, photography, architecture, fine art and sculpture. Over fifty RDIs feature in this exhibition including furniture designers Sir Gordon Russell, Ernest Race and Robin Day; fashion designer Dame Vivienne Westwood, and product designers Kenneth Grange and Sir Jonathan Ive.

One of the complementary displays to this exhibition can be seen in Room 111 and features work by **The New Medallists** which runs from 11 February to 19 August 2012. Medallistic design has been an interest of the RSA from its early days and this display celebrates the first six years of the New Medallist scheme for British-based artists to deepen and broaden their knowledge of the medal and the possibilities it offers for artistic expression.



*A Sovereign of One Peaceful Hour by Petra Mills*

**H.M. Bateman. *The Man Who Went Made on Paper.*** The Cartoon Museum, 35 Little Russell Street, London WC1A 2HH 11 April – 22 July 2012

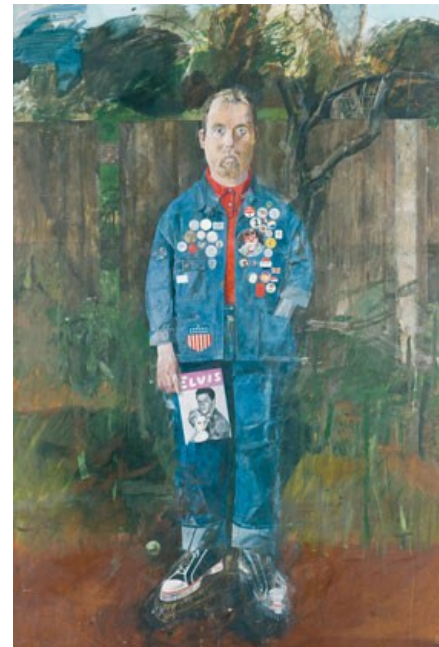
To mark the 125<sup>th</sup> anniversary of the birth of this master of twentieth-century the Cartoon Museum has put together a display of over 120 original Bateman cartoons, including his landmark sequence *The Boy Who Breathed on the Glass in the British Museum*. Also included in the exhibition is his *The One-Note Man*, which inspired a scene in Alfred Hitchcock's 1934 film *The Man Who Knew Too Much*. In his 1949 lecture to the RSA on 'Humour in Art' Bateman advocated a National Gallery of Humorous Art.

**Peter Blake and Pop Music.** Pallant House Gallery, 9 North Pallant, Chichester, West Sussex PO19 1TJ. 23 June – 7 October 2012. £7.50

Pallant House Gallery is drawing on its own extensive collection together with and loans from public and private collections across the UK for this exhibition to celebrate the 80<sup>th</sup> birthday of the godfather of British Pop Art, Sir Peter Blake. Elected to the RSA's Faculty of Royal Designers for Industry, Sir Peter Blake has been closely linked with pop music since the 1950s and is best known for the cover he produced for The Beatles album *Sergeant Pepper's Lonely Hearts Club Band*.

**Peter Blake. *100 Things I Love About London.*** The Fine Art Society, 148 New Bond Street, London W1S 2JT. 20 July -1 September 2012

The Fine Art Society are also holding an exhibition of Sir Peter Blake's work taking as its genesis an earlier painting, in which he featured The Fine Art Society as one of the 100 things he loved about London. Blake has produced a series of silkscreen prints featuring a new selection of his favourite things made from found imagery and he has also designed a new flag for the Fine Art Society façade – it will be largest flag on New Bond Street in the summer of 2012.



*Peter Blake, Self Portrait with Badges, 1961*

**May Morris Embroidery Exhibition.** William Morris Society, 26 Upper Mall, London W6 9TA. Ends 23 June 2012



To mark the 150<sup>th</sup> anniversary of the birth of May Morris, on 25<sup>th</sup> March 1862, the William Morris Society is holding an exhibition of embroideries and embroidery design by Morris's youngest daughter. The display includes the first display of two recent donations to the Society of May's work, *Minstrel with Cymbals* and *Westard Ho*.

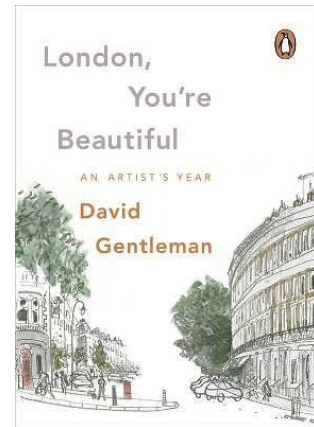
May was recently been commemorated with one of the Royal Mail's 'Britons of Distinction' stamp collection featuring her 'Orange Tree' embroidery.

May Morris was awarded the [R]SA's Silver Medal for her talk on 'Medieval Embroidery' which she gave to the Society on 26 February 1895. South Kensington's Science and Art Department lent some fine specimens of medieval tapestry to illustrate this lecture. Five years later May gave another talk on the subject of 'Pageantry and the Masque'.

## Books

David Gentleman, *London, You're Beautiful. An Artist's Year.* London: Particular Books, 2012 ISBN 1846144736

David Gentleman has worked in scales ranging from the platform-length murals at London's Charing Cross underground station to postage stamps and logos. He has spent the past year looking afresh at the London. The resulting book of sketches, drawings and watercolours, arranged month by month, shows a year in the life of the London and reveals the city that is hidden in plain view. David Gentleman was elected an RDI in 1970. His 1971 RSA Christmas card depicting key inventions of the Society has become a collector's item.



Christopher Breward & Ghislaine Wood, *British Design from 1948: Innovation in the Modern Age.* London: V&A Publishing, 2012. ISBN 1851776745

This beautifully produced and fully illustrated book of the V&A's exhibition on twentieth century British design considers the story of modern design through a number of essays under three section heads: 'Tradition and Modernity 1945-79'; 'Subversion 1955-97' and 'Innovation and Creativity 1963-2012'. There is also a full list of the objects on display. Around a quarter of the objects on display, representing the best of British design, are by members of the RSA's Faculty of Royal Designers for Industry but their distinction as RDI has not been noted in this catalogue or in the exhibition itself.

Harriet Atkinson, *The Festival of Britain: A Land its People.* London: I.B. Tauris, 2012. ISBN 9781848857926

Drawing on previously unseen sketches, plans, photographs and interviews the author has taken the story of the Festival of Britain beyond its spectacular centrepiece on London's South Bank to explore the exhibitions held at Poplar, Battersea and South Kensington in London, as well as Belfast, Glasgow and Swansea. Atkinson also considers the touring show carried on four lorries with another abroad an ex-aircraft carrier. All this activity had one aim: to unite 'the land and the people of Britain' and in the process reconstruct British identity after the disfigurements of the war.

In her postscript Atkinson remarks that the recent 60<sup>th</sup> anniversary celebrations held on the South Bank revealed that the Festival is very much alive in the national imagination.



**WSG Occasional Paper: Sir Gordon Russell CBE, MC, RDI (1892-1980). A twentieth century design pioneer**



Helen Auty, former RSA Director of Design, has written this authoritative account of a former Head of the RSA's Faculty of Royal Designers for Industry, *Sir Gordon Russell CBE, MC, RDI (1892-1980). A twentieth century design pioneer*. This paper complements Jeremy Myerson's excellent book, *Gordon Russell Designer of Furniture*, published twenty years ago, and provides an illustrated review of not only Russell's professional career, but also the concrete designs he produced for his garden at Kingcombe. (Available from the

Honorary Secretary, 7 Drakes Drive, Ducks Hill Road, Northwood, Middx HA6 2SL. Price £7.50 + £1.50 p&p. Please make cheques payable to the William Shipley Group)

For information on opening times for The Gordon Russell Design Museum, 15 Russell Square, Broadway, Worcestershire WR12 7AP please ring 01386 854695 or visit their website (currently in being redesigned) <http://www.gordonrussellmuseum.org/>

**Obituary**



*Early 1950s Copeland silver design*

In April this year the noted craftsman, designer, educator, former POW and FRSA **Lawrence G. Copeland** died at the age of 89. Copeland interacted with some of the most important personalities of the mid-century American crafts movement, and contributed to several of the most prominent craft institutions and enterprises. A silversmith, who had studied with the Court Silversmith to His Majesty the King of Sweden, Copeland, his work in silver and pewter was selected for the initial 'Craftsmanship in a Changing World' exhibit at the Museum of Contemporary Crafts (now the Museum of Arts & Design). His work was also exhibited in the United States Pavilion at the 1958 World's Fair in Brussels and his pieces are in the permanent collection of the Smithsonian Institution.

**Anniversaries**

**Shakespeare's Globe**

2012 marks the 15<sup>th</sup> anniversary of the opening of the reconstructed Shakespeare's Globe theatre on the south bank of the River Thames in 1997. Nine years earlier the American actor and director, Sam Wanamaker, came to the RSA to tell Fellows the significance behind his project to rebuild the Globe as close to its original site as possible. In 1989 the RSA decided to award Wanamaker its Benjamin Franklin medal for his 'outstanding energy, dedication and vision over nearly twenty years in pursuing the objective of establishing ...a reconstruction of Shakespeare's Globe Theatre and associated study centre'.



*Sam Wanamaker. Courtesy of Shakespeare's Globe. Photo: Brian Rybolt*

2012 marks the **bicentenary** of the birth of **Augustus Welby Pugin** (1812-52). A series of events will be taking place around the country to mark this anniversary, including a coach tour of East Kent churches through the eyes of Pugin and a lecture by his biographer, Rosemary Hill. A two day international conference on 'New Directions in Gothic Revival Studies Worldwide' will take place in July at the University of Kent. See the Pugin Society website for information on these and other events. <http://www.pugin-society.1to1.org/events-coming.html>. The architect Sir Charles Barry, who had employed Pugin to design interiors for the Palace of Westminster, proposed Pugin as a member of the Society of Arts in 1850.



*Pugin's preliminary design for Scarisbrick Hall, Palace of Westminster. (V&A collection)*

2012 marks the **centenary** of the death of the surgeon, author and mountaineer, **Clinton Thomas Dent** (1850-1912). Dent's medical career included serving as Chief Surgeon to the Metropolitan Police and Consulting Surgeon at the Belgrave Hospital for Children. His writings include studies of post-surgical insanity and heart surgery, and an account of the wounded in the Transvaal War, to which he had been posted as a correspondent for the *British Medical Journal*. Dent was also one of the most prominent British climbers who attempted the few remaining unclimbed mountains in the Alps. He served as President of the Alpine Club from 1886 to 1889, and may have been the first person to have written in 1885 that an ascent of Mount Everest was possible. In 1897 Dent gave the Society's Christmas Juvenile lecture on 'The Growth and Demolition of Mountains'. There is a memorial tablet to him on the Britannia Hut above Saas-Fee in the canton of Valais in Switzerland.



2012 marks the **centenary** of the death of the English philosopher **Shadworth Hollway Hodgson** (1832-1912). Hodgson sought solace in the study of philosophy following the death of his wife after only three years of marriage. He was a man of immense learning and had read practically every philosophical work, both ancient and modern. His knowledge of Aristotle and Plato was considered remarkable. Hodgson was a member of a London philosophy club called the 'Scratch Eight' and of the Metaphysical Society, which counted Matthew Boulton and John Ruskin among its membership. Hodgson was a founder member, and first President, of the Aristotelian Society founded in 1880 which is still active today. His obituary in *The Times* claims that the success of this Society was 'largely due to his devotion to his work'. Hodgson was elected a member of the Society of Arts in 1871.

*Honorary Patron:* Lord Asa Briggs of Lewes FRSA. *Honorary President:* Dr David Allan, FRSA; *Honorary Vice-Presidents:* Gerry Acher, CBE, LVO, FRSA; Sir Paul Judge, FRSA; Professor Franz Bosbach, Director, University of Duisburg-Essen. *Honorary Benefactor:* Ronald Gerard OBE, KStJ, FRSA. *Honorary Member:* Hermione Hobhouse MBE; *Committee:* Dr Nicholas Cambridge FRSA (Chair); Dr David Allan FRSA (Director of Studies); Prof John Davis FRSA (Deputy Chair); Anthony Burton, FRSA; Jonathan Rollason, FRSA; Mrs Susan Bennett, MA, FRSA (Honorary Secretary and Treasurer)