

The Church of Scotland
Presbytery of Angus

Parish Profile

Dunnichen Letham and Kirkden Church
(Registered Scottish Charity 003833)



Dunnichen, Letham and Kirkden Church

A Call to Reviewable Tenure

About Us

The Parish:

The Parish is comprised of the communities of Letham, Bowriefauld, Craichie and Dunnichen plus a fairly extensive rural/farming area.

The largest centre of population, Letham, was established in 1788 as a weaving village by George Dempster the local MP. He provided the village with a unique form of self-government. Elected annually, the Feuars Committee is still active, meeting in its hall in The Square to manage its property for the common good.

New housing has attracted many families and retired people; this has increased the population of the village and surrounding area to almost 2,000.

Situated in the heart of rural Angus, Letham is ideal for the outdoor enthusiast. Stunning east coast beaches including the famous Lunan Bay; Kirriemuir, the gateway to the glens; world famous golf courses at Carnoustie and St Andrews; and several country parks are all less than an hour away.

In terms of public transport, there are buses to Forfar and Arbroath every hour, and Arbroath and Dundee are on the main East Coast railway line. Forfar is just over five miles away and has both supermarkets and a large number of shops. Dundee is just over 20 miles away and provides the usual facilities of a large city.

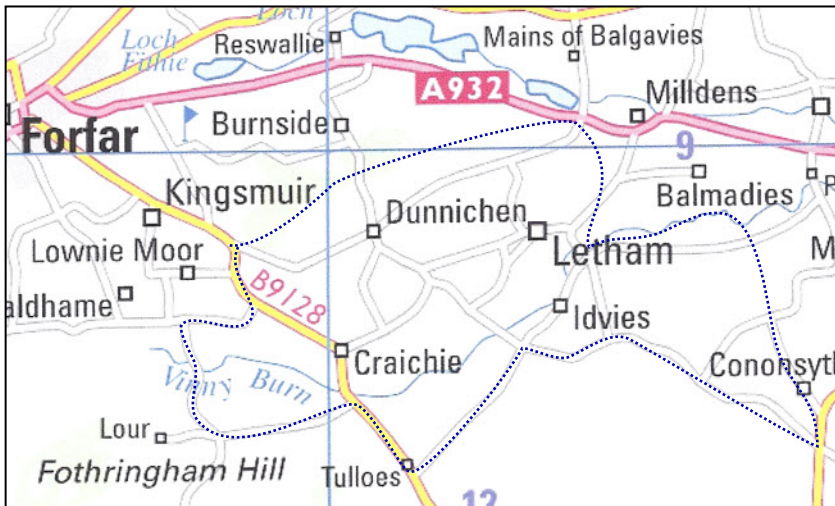
The village is also well suited for family life. The primary school of 180 pupils is some 100m from the Manse. Letham has 2 general stores, one of which is also the Post Office. There is a baker, a hairdresser, a clothes shop, a beauty salon, a craft shop with cafe, a DIY store, a pharmacy, a coffee shop and a garage for repairs. There are two pubs, one of which is the local 5 bedroom Hotel. The main employer is a poultry processing

factory. There is a play park with tennis court and football pitch and also a Bowling Club,

There are a number of other thriving community groups (see BOX). Further information is available on the Letham Community web-site: www.lethamangus.btck.co.uk

The parish includes the historical hamlet of Dunnichen, one mile away, best known for the Battle of Dunnichen in 685 AD – a famous Pictish victory.

OUR PARISH



The Congregation:

Dunnichen Church is an early 19c church and was the original parish Church. It closes on 21st August 2011. Letham Church (1843) which stands in the centre of the village and has a Church Hall adjacent will be the sole place of worship thereafter, Kirkden Church having been demolished in 1952.

There is a roll of 326, with a core of committed, hardworking members. We have very recently adopted the Unitary Constitution and 7 Task Groups have been established to take forward the work of the Kirk

Session. These focus on: finance, fabric, social, publicity, worship, youth, and pastoral care. Outreach and our eco-church status are cross cutting themes and responsibilities for all the Task Groups. New Elders are being trained.

The Sunday morning service is at 10:30 a.m. Average attendance is around 50, with crèche facilities available if required. A new Sunday Club for young children will commence from September. There is a monthly evening service in the Church and a monthly service in Jubilee Court, a sheltered housing complex.

Church groups include a thriving Guild, Men's Prayer Breakfast and a Learning Together Bible Study group. Our award winning monthly newsletter, "In the PICTURE" is delivered free of charge to every home in the parish, and carries community news as well as Church items.

information. Among outreach events in the recent past are visits from the Challenger bus, staffed by People with a Mission Ministries from Perth; "Back to Church Sunday" events; and a Holiday Club. We are running a Holiday Club in August 2011.

Our last Stewardship campaign was in 2003. We do not have a "vision statement" or a forward plan.



The Manse

Recent Past.....

The congregation has been through a difficult period. Following an appeal to the Commission of Assembly, it was ruled that Dunnichen Church should close on 21st August 2011, and that Letham should be developed as the main place of worship. A number of our members found this a very difficult decision to accept. Around the same time our Minister of 18 years moved on. However in the last 3 years, we have benefitted from the services of an Interim Moderator and a Locum Minister and we now have an Interim Minister, all of whom have promoted a time of healing which will allow our congregation to move on.

.....hopes for the future

Extensive modernisation of the manse was completed in February 2011. It is a large six roomed bungalow. Its refurbished kitchen is a very large room which could be used as a family room. Its bathroom and cloak-room toilet have been refitted. It has floor coverings and window blinds throughout. It has double glazing and gas central heating. It has a double garage.

The refurbishment of Letham Church is now the main fabric priority and is at an advanced stage of planning. We expect that successful fundraising will allow us to begin Phase 1 of the project in autumn 2011. We are hoping that our new Minister will help us utilise our refurbished Church so that we may better engage with the community.

Letham is proud to be the largest village in Angus and is a very friendly place where passers-by say hello to one another. We think that the friendliness of the people creates an opportunity for mission. We are looking for a minister who can take advantage of the friendliness of the people to



One of four Dunnichen
Banners to be re-sited
In Letham



Detail from our
Millennium
Banner

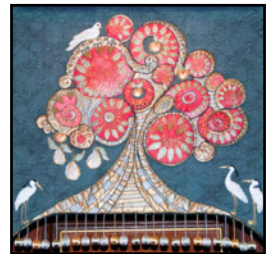
reach out to the wider community. We need a minister who is comfortable speaking to everyone.

Past ministers have been chaplains to the local primary school. A good relationship exists with the primary school. The opportunity to participate in assemblies and to visit classes provides a good link to the community. The secondary school is in Forfar and it might be possible for a minister to participate in the team chaplaincy there.

We are the only Church in the parish. A number of people from the parish travel elsewhere to worship, and some of those who worship elsewhere were once part of our congregation. There is a degree of transience in the population of the parish. We think that these factors suggest that there is the potential to draw people who have a Church connection into Dunnichen,

Letham and Kirkden Church. We also hope that the refurbishment of our Letham building will help us to be perceived as a go-ahead and welcoming fellowship.

While the age profile of our congregation, like most Church of Scotland congregations, is high, there is a strong desire to have a leader who will enable the congregation to reach out to the parish. We hope that the recent change to the Unitary Constitution will liberate the talents and energies of the people in the congregation. We need a leader who can help us work together as a team to build up the fellowship. We need



The Dunnichen
Pulpit Fall

a preacher who can inspire and challenge our active members and who can communicate with people who are not regular at Church.

There have been few baptisms and weddings of late – the Statistical Return as at 31st December 2010 shows 1 baptism and 1 wedding. The number of funerals is low - 8.

Forfar Area Parish Grouping

Dunnichen, Letham and Kirkden Church is part of the Forfar Area Parish Grouping. The Parish Grouping is a formal agreement reached between Presbytery and the participating congregations as part of the Presbytery Plan. Glamis, Inverarity and Kinnettles Church has been moved to the Kirriemuir Area Parish Grouping, and therefore the 40% of the ministerial time which was to have been devoted to the Grouping by the minister at Glamis, Inverarity & Kinnettles is no longer available to the Forfar Grouping. The exact terms of the Forfar Grouping are due to be reviewed. The effectiveness of the grouping is questionable but it may provide opportunities for mutual support and joint ventures.

The Call

Dunnichen, Letham and Kirkden Church has been given permission to call a minister on the basis of reviewable tenure. The Presbytery Plan states that Dunnichen, Letham and Kirkden Church will be linked with Aberlemno, Guthrie and Rescobie whenever that charge falls vacant. While there is no certainty as to when that will be, the indications are that it will not be for many years. We suggest that you speak to our interim moderator about this matter.

Applications:

Please send your application, which should outline why you are drawn to this charge, along with your CV and the names and addresses of two referees to the Clerk to the Nominating Committee:

Further information:

Informal inquiries may be made to the Interim Minister:

Rev Jim Davies, 7 Braehead Road, LETHAM, Angus.

07921023144 (m)

daviesjim@btinternet.com

Letham Community Groups:**Children's Groups:**

Under 5's – Mother and Toddlers / Playgroup / Nurseries / After School Club

Under 12's – Brownies / Beavers / Cubs / Scouts

Community Groups:

Community Council / Village Hall Committee / Feuars Committee

Clubs and Societies:

WRI / Gardening / Bowling / Bridge / Twinning Association / Drama Group / Line

Dancing / Showcase the Street / Aerobics / Zumba / The Basement (Young People)

Angus Gold / Pensioners' Association / Senior Circle / Healthy Living Group / Lunch Club / Plashmill Renewed / Dunnichen Heritage Society