

Chris's Reordering Blog – Week 14 & 15, 4 to 15 September



Having been away staying in the Cotswolds all last week I'm only just catching up with things. The picture shows the stone floor now pretty much complete in the North Aisle and now covered with plywood to give some protection while work goes on tidying up the plaster in that area.

You can also see work progressing in the Nave including the detail around the font base. In the second picture you can just see the diamond set in the floor which will be one of a series between the West Door and the Altar.

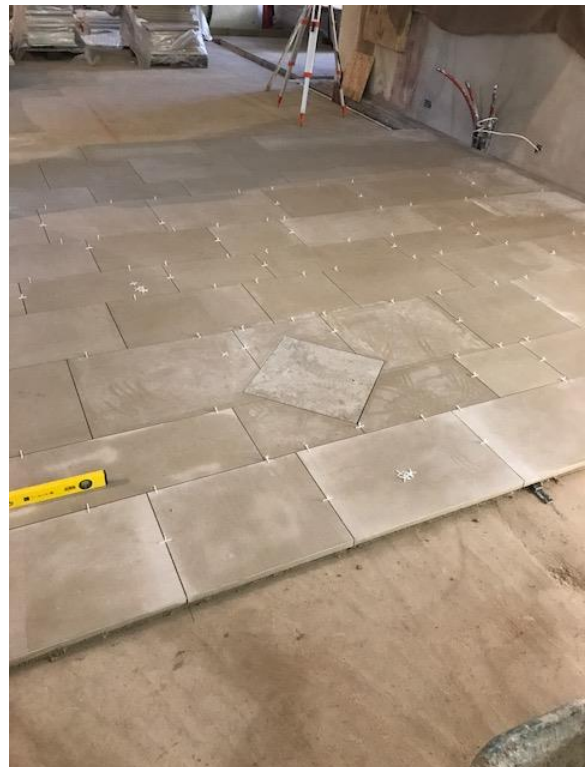
As I said previously, the detail stonework such as these diamonds, and around the font and in other

places are of a slightly different coloured stone but you will only see the full effect of this once the stone has been cleaned and sealed.

You can also see, on the second picture, that the lime plaster on the south wall of the Nave is now complete.

Steve Roadhouse the Site Supervisor has been overseeing the work and has been carrying out most of the cutting of the stone. He is very aware of the sense of history here and is proud to be part of something that will be in place for many hundreds of years. He has also conveyed that to the apprentice that is on site and is involving him in this work to make sure he realises that he would be able to come back to the Church in 50 years' time and say to his grandchildren 'I did some of that work!'

This sense of place, of history, will also be reflected in the carpentry work. So far we have only seen photographs of parts of the Altar that





is being made by Richard Donkersley, he is also making the additional panelling to fill the gap in the Reredos, that's the oak panel behind the Altar and under the East Window.

My picture here shows the craftsmanship of Richard Donkersley where he has reinstated a section of a pew end that had a chunk cut out to accommodate the heating pipes at some point, probably in the 1930s. It seems these pews were originally in the South Transept.

The new Altar is being made using the pew ends as the vertical supports and the seat timber for the top. Again I go back to Derek Shorrocks' book on the history of the Church

which has quite a bit to say about these pews. In summary it says:

The pews were set on either side of the passageway from the newly opened door on the south wall, [in 1909], where they remained until 1968 when they were removed for the organ console to be installed. The pews were later used as the four front pews of the centre aisle, distinguished by being made of oak and having carved ends. It seems likely that they were commissioned privately by Mr. Turner [from Staplegrove Manor]. There are sufficient affinities with the pulpit to believe that the Norton sub Hamdon carpenter, Mr. Parkin, [who made the Pulpit] was also the craftsman of the pews.

It looks as though the Porch Lantern will be installed very soon so hopefully I will have some pictures of that being installed next time.

Chris Young – 18 September 2017