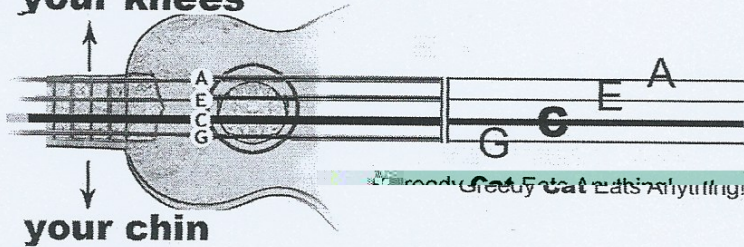


how to read and play from TAB

You can play everything in this book even if you can't read music.

TAB gives you an easy way of reading the notes. It tells you exactly how and where to find the notes on the ukulele.

your knees



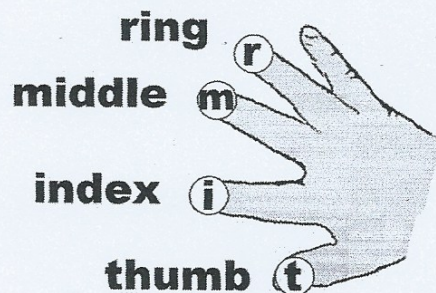
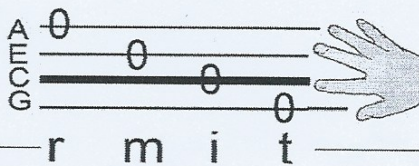
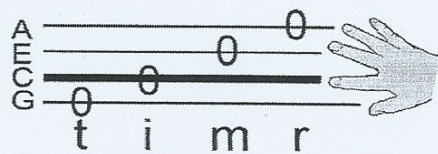
your chin

TAB is short for TABLATURE. It gives you a picture of the 4 strings going horizontally along the page

Do you see that one string is thicker than the other three? It's always easy to find the thick C string.

0 means you don't use any left-hand fingers - just play the **open string**

The letters tell you which right-hand fingers to use to pluck the strings.



1 means put **finger 1** at **fret 1** **2** means put **finger 2** at **fret 2**

Example 1:

Example 2: