

Towneley News

Issue 11 Autumn/Winter 2013



**Retiring Officer
Black Honey Bees
History Uncovered
Winter Wonderland
10th Anniversary Success**

Published by



Friends of Towneley

Park

Reg. Charity No. 1144988

10th ANNIVERSARY

In this the 10th year since the Friends of Towneley Park was first set up, we have had our busiest year yet. Our sincere thanks goes to all of you who have supported our stalls and events, and given so generously to make 2012-2013 our most successful year ever. All the money raised will be invested in future activities, and contributions towards Park events.

Easter Sunday started with the Easter Trail, and Hat Parade when almost 200 families took part, enjoying a cold but sunny day. **Children from local schools** came to see the magnificent display of daffodils they have planted over the past

five years, now totalling over 10,000. Recently they sowed wild flower seeds at Woodgrove. **May Day brought thousands of people into the park**, as the Friends sold plants, held a Bric-a-brac stall and had a raffle. In all £293 was raised.

May 17th was Business in the Community 'Give and Gain Day', when various employees from local companies came to join us for a day working in the park. Thank you and well done everyone. From the sadness of removing the spring flowers, which were still in bloom in the Italian Garden, we were fortunate to sell many plants and make a profit of £150, which will go towards the cost of the Barwise Dahlias.



Winter Wonderland at Towneley

A winter's day, what can we possibly find to entertain the kids at Towneley Park?

Here are a few ideas:

Peeping through the willow fencing there are often **birds feeding** in the bird reserve, opposite the 400 year old oak tree, with more adventurous birds daring to feed at the Riverside car park. You could put seed or fat pads on the bird table, but remember that bread is not good for wild birds. Taking photos, especially of the frozen pond or the snowy trees can be fun too and you can place the good photographs on flickr at www.flickr.com/groups/towneley_park

With a pair of wellies and an umbrella, a walk round the **Smallholdings Trail** or the **Sculpture trail** in Thanet Lee Wood will reveal various carvings and sculptures of animals, insects and birds which form an excellent basis for some research on the internet. Where do they live? What happens to them in the winter? How long do they live? What do they eat?

Of course there is always entry to **the Hall**, free for people who live in Burnley, and just £4 annual admission for those from other places. There's the **Robin Trail** or the **Cabinet of Curiosity**. The puppet theatre is always available in the **Natural History gallery**, during opening hours, and the **Stocks Massey Art Gallery** always provides lots of talking points! **The Friends' DVD "Step Back in Time" - Stories of the Towneleys** on sale in the shop at £5, provides an hour of interesting dramatised stories of the history of some of the Towneley family. Well worth watching.

Finally, on **Sunday December 15th the Friends of Towneley are again providing a festive trail** and visit to Santa's grotto for children aged 2 - 9 years. This year there will be a charge of £2 per child or £5 for larger families. Everyone is welcome to take part in the **12 days of Christmas Nature trail**, at a charge of £1, but those wishing to visit Santa MUST BOOK a place by ringing Pat on 01282 426449. The trail begins in the Hall Foyer.

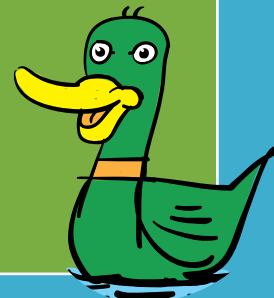
HAPPY HEALTHY DUCKS

Everyone enjoys feeding the ducks in the park, but it is important we look after their health, the water, and the environment.

Please don't feed them bread!

Bread has no nutritional value and can harm ducklings' growth, pollute the water and attract rats. Bread quickly sinks out of reach of the ducks and rots on the bottom of the pond causing polluted water, and any bread left to rot on the grass attracts rats and vermin.

If you like feeding the ducks, why not raid your kitchen cupboard they really enjoy rice, oats, birdseed, defrosted peas, corn or cut up grapes



...and finally:

Following a request from the Friends, Burnley Council's Streetscene have provided a larger dog waste bin at the stone bridge near Riverside car park. Securely bagged dog waste can also be placed in ordinary bins.

If you have any concerns or improvements you wish to see in the Park, please contact our Chairman or Secretary.

The Wicker Workshops with 24 adults taking part, were greatly enjoyed. Thank you to those who later joined the Friends helping 200 school children learn the art of willow weaving. The wicker deer are now well established in the Italian garden and live willow will be added to them in **October**.

June brought crowds for 'Brass in the Park', to listen to school children from Blackburn and Billington play their music. To help reimburse the £200 we had contributed

to the band, you helped the Friends raise £320 buying from their refreshment stall.

How very proud we all were of the Hall and Gardens when the 'Antiques Roadshow' came to film. The Friends worked as Stewards for a long tiring day, but enjoying every minute, it was wonderful to hear Fiona Bruce, the Experts and BBC Staff, compliment us on such a breathtaking location. Thanks to everyone for making it a special day.



Thank you Keith, we all wish you a Long and Happy Retirement.

RETIRING OFFICER

Over the past 16 years, you may have noticed how Burnley's landscape has been changing with wooded areas, not only on the hillsides, but in other areas previously void of trees.

With Keith Wilson, Burnley's Woodland Officer tasked with the job, this dramatic change in our scenery is the result of Burnley Council getting funding to create a 'Forest of Burnley', and an Urban Arboretum.

The work involved was not just about planting one million native Broad Leaf Trees, but bringing neglected woodlands into proper management, which includes

Towneley. Also the new woodlands had to have public access, by making pathways suitable for activities such as walking, cycling, horse riding, etc. Valuable flora and fauna sites had to be protected from tree planting. Keith also had to contend with vandalism, sheep getting in amongst the trees, and no-one ever thought that deer would increase in numbers and damage the trees.

He takes all this in his days work. With his dedication the 'Forest of Burnley' is now an extremely valuable asset.

This year's Woodland Festival in September will be the last one for Keith to organise,

as unfortunately for us he will be retiring in October. Leaving the Forest of Burnley, having expended so much of his time, energy, thought, care, and possibly at times, patience, will not be easy, but being the conscientious person he is, no doubt he will back to check we are looking after his investment!

History uncovered

We hope you will look out for our trail and leaflet in spring 2014

The library at the Hall, Burnley Central Library and Lancashire Archives, Preston all hold a wealth of information about Towneley's history, but the Friends want to draw together some of this information and make it more accessible to the public.

Funded through the Heritage Lottery Fund we, therefore, set up workshops to encourage the public to find out about specific aspects of the Park with a view to producing a leaflet and trail by February 2014.

It has proved to be a fascinating journey of discovery as people have interviewed those who can remember the allotments and smallholdings on what is now the Riverside car Park. The photographs of the Stocks Massey Music pavilion have shown the large staging which had to be demolished in 1968,

and the Newspapers surprised us as we read that 3,500 people attended the opening in 1929. On the site of the former Towneley school we discovered there was Dirt Track Racing and a Greyhound Racing Track. Fulfilled recreation ground, which extended almost as far the site of Burnley Football Club, contained a band stand, and there was an athletics track on the opposite side of Mitella Street which gave its name to Athletic Street. And of course, we learnt about Joseph Barwise and his dahlias, the Rosehill House fountain in the Italian Garden, the relocation of Foldys Cross and lots more.

If you are interested in joining our journey of discovery, please contact Susan Barker at:

burnleybarker@btinternet.com

or if you want to learn more about the project visit www.fotp.btck.com and follow the History blog.





Black Honey Bees

Following our previous article on the Black Honey Bees at 'Offshoots', we are pleased to report there are now 8 Colonies in Towneley Park (5 British Black and 3 European). Each colony has approximately 60,000 bees with a Queen Bee who can lay up to 2,000 eggs per day.

The training programme carried out by 'Offshoots' has been very successful with 150 people now qualified bee keepers. The wild flowers planted by the Friends and local school children at Woodgrove, and on the edges of the wetlands, should provide plenty of nectar for the bees.

What's On

AUGUST

26 Family Fun Walk 2pm Rotunda

SEPTEMBER

7-19 Burnley People – Pakistani Roots

8 Local food producers in the Craft Museum 11am – 4pm

13-15 Heritage Weekend – Free entry and tours of the Hall all weekend

15 Woodland Festival – Free Family Day with live enactments, activities and displays around the Hall and Park.

18 Sept –15 Nov Treasures at Towneley – A celebration of 100 years of Royal connections with Burnley.

OCTOBER

12 **Friends of Towneley Park Annual General Meeting, 2pm Lecture Theatre. New members most welcome.**

28-31 Halloween Activities in and around the Hall, ring the Hall for more details.

NOVEMBER

5 Bonfire & Firework Display 6.30 – 9pm. Ticket only event - ring the Hall.

24 Annual Christmas Craft & Gift Fair, Festive Entertainment, Tea Rooms. 12 – 4pm. Ring the Hall for more details.

DECEMBER

2-8 A Victorian Christmas, visit the kitchen and learn how the cook prepared for the family, Christmas Dinner, Tours of the Hall, etc. Ring the Hall for details.

9&11 Christmas at Towneley – Enjoy an evening of festive music and carols, followed by a hot and cold buffet. Ticket only event £18, doors open 7pm. Ring the Hall.

15 Father Christmas comes to Towneley – Follow the 12 Days of Christmas Trail and visit Santa in his Grotto for a gift. Open to children aged 2 – 9 years old. Charge £2 per child. This is a booking only event: Ring 01282 426449 for a place.

20 Annual Christmas Dinner Dance – Festive three course meal, live band, cash bar. Ticket only event £40. Ring the Hall.

Useful Information

- **Friends of Towneley Park** contact
Chairman - Maureen Frankland on 01282 432423,
Secretary - Pat Colbran on 01282 426449
email: maureenfrankland159@btinternet.com
www.fotp.btck.co.uk
- **Hall events or tickets** Many events are held in the Hall itself, leaflets can be picked up at the Hall's gift shop. Tel. 01282 477130
- **Springwood Nurseries** on 01282 832271
- **Towneley Garden Centre** on 01282 424162 or visit www.towneleygardencentre.co.uk
- **Offshoots** on 01282 450270 or visit www.offshoots.org.uk for more information.
- **Stephen Hastings** for sporting events on 01282 477232
- **Andy Buck** for park events & management on 01282 425011 or email abuck@burnley.gov.uk
- **The Rangers** 01282 831053

For general information and leaflet downloads please visit www.burnley.gov.uk/towneley

Hall Opening Times

Saturday – Thursday

12 noon – 5pm

FREE admission for Burnley residents

12mth Pass – £4 for non-Burnley residents

The Stables Cafe

Open from 10am daily.

For more information and for bookings call 01282 430111.

The Rotunda refreshments

In Riverside car park, open every weekend, bank holiday and school holidays.

For Information & Bookings please ring Towneley Hall 01282 477130.

Where to Find Us: Towneley, Towneley Holmes, Burnley, BB11 3RQ

Bus number 1 gets you to the bottom of Brunshaw or the top of Pike Hill.

Bus number 8 gets you to the top of Todmorden Road to enter along the Causeway or through Barwise.



Friends of Towneley Park Meetings:

AGM Sat 12th October 2pm : Weds 22nd Jan : Thurs 20th March



Thank you Councillors Margaret Brindle, Jeff Sumner and Misfir Hassam for sponsoring this newsletter.