

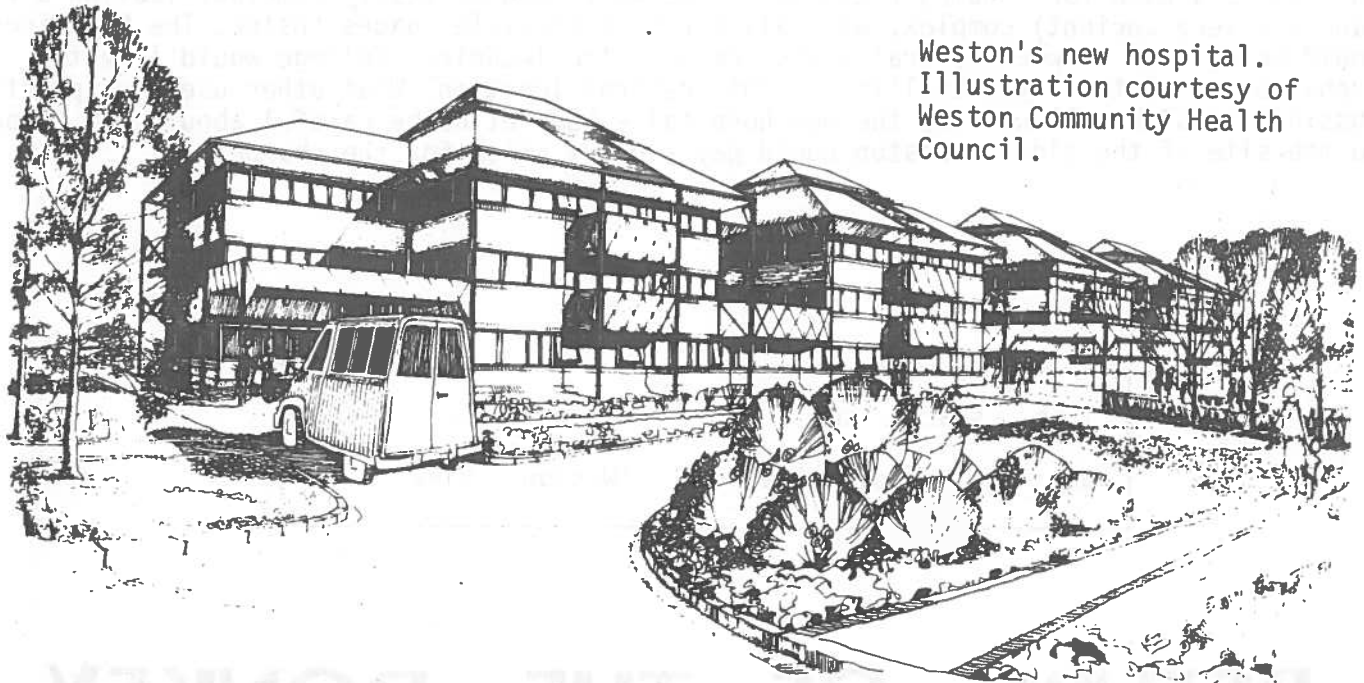


WESTON VIEW

Vol 2 No 1

Price 10p

Free to Weston Civic Society Members



Weston's new hospital.
Illustration courtesy of
Weston Community Health
Council.

THE GENERAL -

WARTS AND ALL!

A start has been made on the new hospital, which should open with 252 beds in 1986. The Royal West of England Hospital (The Sanitorium) will remain in use. Ashcombe House, the Drove Road Hospital, and the General Hospital in the Boulevard will close.

So what will be done with them? The normal procedure in such cases will be followed. The Health Authority will consult other government organisations to see if they are interested in the properties. If they are not, the buildings will be put on the open market and sold. And if this happens the obligation is presumably to fetch the best price.

WESTON'S FINEST STREET

One would be especially anxious about the General Hospital. It not only incorporates the original Weston Hospital in Alfred Street, Hans Price's first public commission in the town. It also occupies a key site in what used to be called 'Weston's finest street'.

Any demolition and rebuilding here would have a drastic impact on the Boulevard. The street will soon have to absorb new development on the Tivoli bomb site almost opposite. We have already had the regrettable Telephone Exchange, not to mention a modern house on the hillside below Christchurch (The Boulevard was planned to line up exactly with the spire of Christchurch). More recently the turret of Price's Constitutional Club was removed.

True, the General Hospital has been marred by some poor additions in recent years. But the General, warts and all, is probably preferable to whatever might replace it. For one thing it is one of the last major buildings in the town to employ local stone, and the Boulevard is very definitely 'a stone street'.

NEW USES

So here is a case for finding fresh uses. The warts can be easily removed, leaving a fine (and not very ancient) complex, with all sorts of flexible spaces inside. The buildings could be divided between several users. Perhaps the Technical College would like to exchange out-of-the-way Westcliff for this central location? What other uses are practical possibilities? We all welcome the new hospital - but let us be careful about what happens to the site of the old, or Weston could pay a heavy price for the change.

This space could be selling for you !
Why not advertise in 'Weston View' ?

RETURN OF THE DONKEY



The Weston Donkey is to be brought back as a 'logo' in the town's tourist publicity. Welcome back! The donkey was always a distinctive trademark for the town - suggesting fun without vulgarity or the desperate contrivance of so much modern advertising.

It is believed donkeys were first introduced to the seaside by travelling gypsies. They soon became established favourites, part of the innocent amusement which the English seaside stands for. In Victorian Weston, as well as riding on a donkey, you could travel in style in a donkey-cart. Donkeys have a quality of patient endurance, together with an occasional streak of waywardness - wholly characteristic of Weston!

But what we all want to know is; are there still those special hats for donkeys, with holes for their ears?



for
ALL your
CURTAINS, LOOSE COVERS,
RE-UPHOLSTERY,
and
DO-IT-YOURSELF
UPHOLSTERY SUPPLIES

R. P. FORSEY LTD.

58a Clifton Road
Weston~super~Mare.
Tel 22225

SOFT FURNISHING SPECIALISTS

ESTIMATES FREE

ALL WORK CARRIED OUT
IN OUR OWN LOCAL
WORKSHOPS



COTSWOLD CORNUCOPIA



SATURDAY 11TH SEPTEMBER 1982

Civic Society Members £5.50
Non-Members £6.00

Coach leaves Weston Library
at
10.00 a.m., returns at 7.30

To book

Contact - Martin Taylor
Tel. 412549

Bob Smart
Tel. 27355

OR

Weston Guild
28 Orchard St
Weston s Mare
Tel. 24778

natta

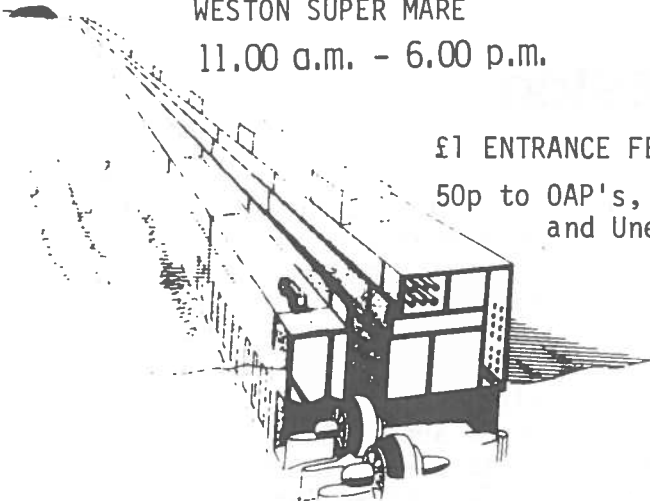
Severn Barrage Conference Weston- super- Mare

SATURDAY 2ND OCTOBER 1982

BIRNBECK PIER
WESTON SUPER MARE
11.00 a.m. - 6.00 p.m.

£1 ENTRANCE FEE

50p to OAP's, Students
and Unemployed



For further details contact
Weston Guild, 28 Orchard street.

Dogs!

It is reported that Burnham and Highbridge are very much less polluted by dog mess than they were a few weeks ago, thanks to the measures taken by Sedgemoor. Dog runs have been created among other initiatives.

Without wishing to add to the often silly controversy on this topic, where more heat than light is generated, we would suggest that Woodspring adopt similar constructive measures. They seem to work, and could perhaps rid Weston of an offensive nuisance.

Why not be constructive, as our neighbours have been, instead of carrying on with useless bickering?

Tea and Ceremony at Grove Park

A year's work on the Grove Park Enhancement Scheme was marked on Saturday, 7th August when officers and guests of the Society gathered at the bandstand. The Mayor and Mayoress of Weston, councillor and Mrs Brewer, and other Charter Trustees honoured us by their presence. Miss Michele Knightly, daughter of the late David Knightly and Chairman of the David Knightly Charitable Trust, inspected the work and presented us with a certificate recording the Society's achievement in gaining second prize in the Pride of Place Competition. Afterwards tea was served in Grove House.

The Enhancement Scheme in Weston's first conservation area has drawn praise from residents and visitors. It is now moving into its closing stages. The last railings are being fixed in position, and Woodspring District Council has undertaken to make good the pavements and kerbs. We hope to plant more trees and shrubs next season.

We say goodbye to Andrew Woolley and Ron Tarrant, the two supervisors of the YOP teams who carried through so much of the masonry work, and extend to them our thanks and best wishes.

Wot, No Deckchairs!

We were pleased that the Copperfield Brass agreed to give a concert to coincide with our own event. The return of bands to Grove Park this summer has been most welcome. Well done Woodspring! Clearly the potential of this splendid period piece is better appreciated now than it was a few years ago when there was a suggestion that it be demolished.

On the Saturday afternoon of our own ceremony, deckchairs were provided through Woodspring's good offices, but at other concerts this summer they have been lacking. There are fewer seats than there used to be in the park anyway. It would be worth maintaining a stack of chairs in Grove Park for such occasions, to provide the finishing touch and do the thing properly. Many more people would linger to listen if they could sit down.

Making The Most Of Weston

It was fitting that our presentation ceremony should take place in the bandstand which provides the Society's emblem. To us the bandstand symbolizes 'the spirit of Weston'. It is stylish and attractive, with connotations of leisure and entertainment, and it makes good use of the local stone as well as cast iron.

Our own Enhancement Scheme, coupled with the return of live music, should give this area a boost. It demonstrates the Civic Society's approach to so many local issues. Making the most of what we have inherited, appreciating our assets, respecting their character, giving them new life. Grove Park, under the Smyth-Pigotts, is where Weston's leisure industry started two hundred years ago. Long may it continue!

Architectural Salvage

The Civic Society runs this scheme to rescue materials and fittings from older buildings, so that they can be re-used.

Among items in stock this month:-

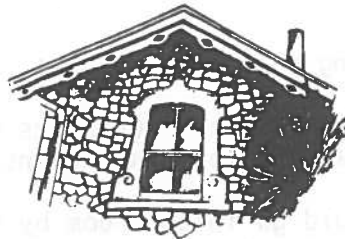
- * FIREPLACES
- * GATES
- * DOORS
- * ROOF TILES

Let us know if you are looking for a particular item.

We thank -

Mrs. Hill
Mr. Norton
Mr. D. Reynolds

for items donated.



All enquiries:-
28 Orchard Street

Ron Taylor

ELECTRICAL & PLUMBING
CONTRACTOR



REWIRES

WASHING
MACHINES

EMERGENCY
LIGHTING

FIRE ALARMS

SHOWERS

TEL. 21540

Much of the work of compiling this magazine has been carried out by young people receiving training under Weston Civic Society's Youth Opportunities Programme. We would like to thank them for their efforts.

Heritage Credit Services

6 ALBANY, EASTFIELD PARK,
WESTON-SUPER-MARE, AVON BS23 2PF

TELEPHONE: (0934) 413383

- * FULL COLLECTION SERVICE
- * STATUS ENQUIRY SERVICE
- * PERSONAL COLLECTIONS
- * LITIGATION WORK
- * HIGHLY COMPETITIVE RATES
- * CREDIT INVESTIGATIONS
- * COMPLETE CREDIT CONTROL PACKAGES
- * COMPREHENSIVE "FEED-BACK" SERVICE
- * INDIVIDUAL OR BULK COLLECTIONS UNDERTAKEN
- * CONTACTS FOR BUSINESS DEVELOPMENT FINANCE

LOCAL LORE



SEPTEMBER

September blow soft
Till the fruit's in the loft.

- 19th If there is a storm from the south on this day, expect a mild winter.
- 29th On Michaelmas Day the Devil puts his hoof on the blackberries and they are no good afterwards. If you eat goose on Michaelmas Day you will never want money all the year round.
If St. Michael's Day brings many acorns, Christmas will cover the fields with snow.

OCTOBER

If in October you do marry
Love will come, but riches tarry.

Ice in October that will bear up a duck
Foretells a winter as wet as muck.

- 18th On St. Luke's Day
The oxen may play.
(There is often a spell of late fine weather at this time - St. Luke's Little Summer.)

- 19th This is the day for making cuttings of roses.

- 31st All Hallows' Eve is one of the rare occasions when witches and fairies were believed to be abroad and to endow humans with the power of foretelling the future.
On this night a girl should go into a room by herself at midnight. She must light a candle and going to a mirror eat an apple. If she does not look behind her she will see in the mirror the image of her future sweetheart looking over her shoulder.

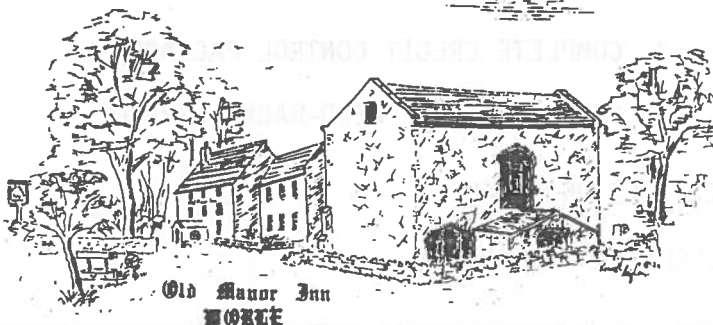
Take two nuts and place them in the fire, naming one after yourself and one after your sweetheart. If they burn brightly together there will always be love between you two. If they crack and spring away from each other there will be quarrels and possibly separations.



THE OLD MANOR INN

QUEENSWAY, WORLE, W-S-M

Tel: W-s-M (0934) 515143



Old Manor Inn
WORLE

2 Bars, Restaurant
Snooker Room and Skittle Alley,
Hotel Bedrooms, all with Shower,
Bathroom and Colour TV

Main Bar serving a large
selection of Real Ales
Bar Lunches: 12.00-2.00
Restaurant open: 7.00-10.30

Stable Bar with Skittle Alley
and Games Room
Skittle Evenings arranged
(Separate Snooker Room)
Bar Meals served until 10.15

TREES



WESTON VIEW

The Society hopes to undertake more tree planting this season. In addition to trees especially ordered, we are always grateful for the opportunity to collect young trees from local gardens, for replanting elsewhere. Sometimes people have a young tree growing up in an awkward place which they have to remove. Rather than destroy it, why not give it to us? We will see if it can be transplanted.

The Society would also like us to find some land where it can start up a small tree nursery. Do you know of any unused land - perhaps an odd corner that is no good for anything else - where young trees could be grown for eventual planting out in Weston?



Members will notice that the regular newsletter has changed its format. It is hoped to produce 'Weston View' with the support of local advertisers in order to give a better coverage of the Society's activities and of topics concerning our local surroundings.

Letters and articles by members will be welcome. Do let us know what you think about local issues.

If you would like to place a small advertisement, please ask at 28 Orchard Street.

Rates for 'non-display' small adverts are 2p per word.

'Weston View' will be distributed free to members of the Civic Society, but will also be on sale to the general public. By improving the newsletter we hope to reach between 3000 and 4000 with each edition.

'Weston View' is published by Weston-super-Mare Civic Society at 28 Orchard Street, Weston.

WESTON CIVIC SOCIETY is Your local amenity society

Registered Charity Number - 266344

Will you support us by joining if you are not a member?
Please complete and return to:-

28 Orchard Street
Weston super Mare

NAME _____

ADDRESS _____

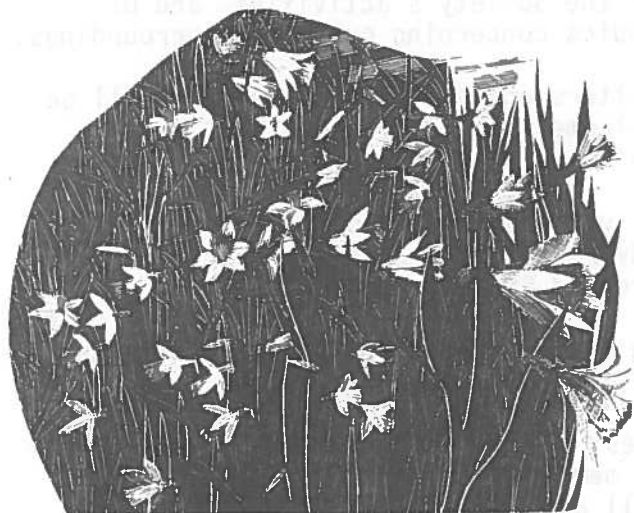
Tel _____

Please tick as appropriate -

Individual Membership	£2 per annum
Family Membership	£3 per annum
Student Membership	50p per annum
Life Membership	£15



CIVIC SOCIETY BULBS - SPECIAL OFFER



Once again, to raise funds for Enhancement Work, we are selling bulbs this Autumn. Through co-operation with the Arkwright Society we obtain direct from the growers in the East Midlands.

Those who bought our bulbs last year will know that they are good value.

This year we shall sell bags of bulbs for 48 pence and 95 pence. The number in each bag will be approximately 15 or 30. Varieties include:-

- * GOLDEN DUCAT - a golden yellow daffodil, with a double flower; very popular, flowers late March.
 - * GOLDEN HARVEST - a good general flowering bulb.
 - * MIXED DAFFODILS - for a general display flowering at different times.
 - * MIXED TULIPS - very good value at 98 pence per bag of 20.
- We are also offering some larger bulbs in bags of 15 at 68 pence per bag.
- * MAGNIFICENT - an early flowering daffodil.

CALL AT WESTON GUILD, 28 ORCHARD STREET,
FOR DETAILS AND ORDER FORMS.

Opportunities for Young People



Unemployment among young people is a major local problem. Many Weston teenagers are denied the chance to acquire the 'work habit' or to gain the sort of experience which makes them attractive to employers.

Places exist on the Civic Society's Youth Opportunities Programme, which offers the chance to gain work experience and receive training in various skills. At the same time young people can help the local community.

Landscape, clearance and planting - building and decorating - shop and office skills - salvaging building materials and fittings for re-use.

Trainees receive £25 per week take-home pay, and the chance to attend Day Release Courses. For details ask at Weston Guild, 28 Orchard Street or contact the Careers Service (Rob Dyke or Sarah Chance), Somerset House, Oxford Street (Tel. 27611).

DO YOU KNOW A SCHOOL LEAVER WHO MIGHT BE INTERESTED?

GIVE US THE TOOLS...

Can you help by providing gardening or building tools for our teams of young people to use? We need spades, trowels, hammers, chisels, saws, brushes, buckets... etc. Let us know if you have unwanted or old tools, and we will collect.

HELP LOCAL YOUNG PEOPLE TO HELP WESTON.

THE OLD LODGE

Worlebury end of Weston Woods

(106 Terminus)

Weston 29657

Coffees - Teas - Ices

Tea Gardens

Also

Curios - Goods - Jewellery - China
Postcards

Opens Tues. Thurs. Sundays

10.30-6.30



UNIVERSITY OF BRISTOL

DEPARTMENT OF EXTRA-MURAL STUDIES

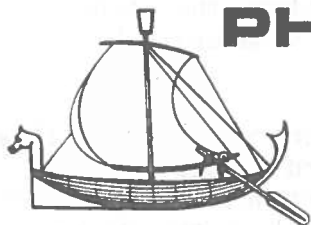
in collaboration with the WESTON-SUPER-MARE
Branch of the Workers' Educational Association.

Literature between the Wars

Ten weekly meetings on Thursdays
7.15 - 8.45 p.m. At Weston Technical
College, beginning on Thursday 30
September 1982. Fee £10.00
Tutors: Philip Beisly M.A. and
Robert Smart B.A.

Books to be studied include:
Yeats' poetry, Orwell's 'Keep the
Aspidistra Flying' Faulkner's
'The Sound and the Fury' and
Steinbeck's 'Cannery Row'.

All enquiries to Bob Smart,
41, Earlham Grove, Weston.
(. Tel. 27355)



PHOENICIA TRAVEL

THE
HOLIDAY EXPERTS
for

- *BETTER SERVICE*
- *CRUISING*
- *ECONOMICALLY PRICED AIR
TICKETS*
- *SHORT BREAKS*
- *GOLFING HOLIDAYS*
- *BUSINESS TRAVEL*
- *SKIING SPECIALIST*
- *GROUP TRAVEL*

also

SPECIALLY APPOINTED AGENTS
to the
AUSTRALIAN TOURIST COMMISSION

meet the friendly professionals, at

PHOENICIA TRAVEL LTD.,
6 Waterloo Street, Weston-super-Mare.
Telephone: (0934) 20322

SUNFLOWER

WHOLEFOODS
& Cafe

FULL RANGE OF CEREALS
BEANS, FLOURS
COLD PRESSED OILS
NUT, DRIED FRUIT
HERBS SPICES

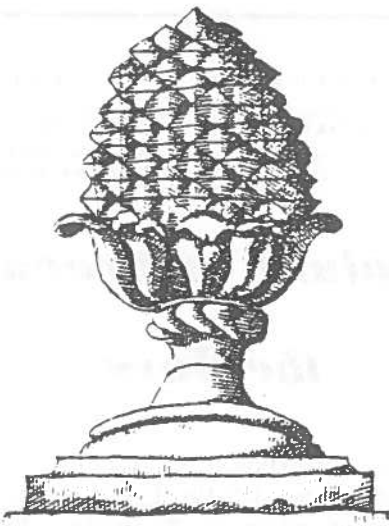
Macrobiotic supplies
including TOFU, SEAWEEDS
MISO, SHOYU
+ NATURAL COSMETICS
& BULK SHAMPOOS

OPEN 9.15-5pm/THURS. - 9.15-2.30pm

IN THE WHOLEFOOD CAFE
UPSTAIRS

We serve a delicious range
of home-made dishes and
snacks-Everything is
prepared with the utmost
care and the best possible
vegetarian ingredients

OPEN MON - FRI 10-2.30 p.m.



PRACTICAL CONSERVATION

Treating Bath Stone

Period houses in Weston combine hard local grey limestone with soft honey-coloured freestone. The latter, used round doors and windows, as quoins or corners, as coping or garden walls etc, is so called because it is easily worked. Masons could carve freestone to produce decorative effects, and in the last century freestone masons were at the head of their profession. The best freestone locally was Bath stone, brought by rail, from the famous quarries (which you can still visit).

After a hundred years it is not surprising if Bath stone requires treatment, especially in the salt atmosphere of Weston.

The problem may be dirt, which easily penetrates such a soft stone. Soot from chimneys has been replaced by pollution from traffic exhaust. Washing the stone with water is the simplest remedy. Do not use acid. Clean water is best. If you are doing the job by hand, do not use a wire brush, but take an ordinary scrubbing brush to it. Sand blasting is usually too drastic and damages the stone.

Water penetration is one danger to avoid - hidden iron cramps and fixings may rust if water is allowed to penetrate cracks or badly pointed joints.

It is unwise to paint stone. Apart from looking all wrong, paint stops the stone breathing. It will fall off after a while, pulling away the stone's natural skin. Paint does not preserve stone.

Once cleared, Bath stone can be treated with a silicone-based water repellent, following the maker's instructions. These should comply with British Standard BS3826:1969. But there is some doubt whether these expensive treatments are worthwhile. Experiments suggest that a light washing at intervals (perhaps every five years) is the cheapest and most effective protection.

Minor cracks and cavities can be filled using Bath stone dust in a mixture. The Civic Society can supply you with bags of stone dust - ask at 28 Orchard Street.

It is wrong to use simple cement on Bath stone. It will fall off! Generally what you put on should never be 'stronger' than the original, or it will pull away.

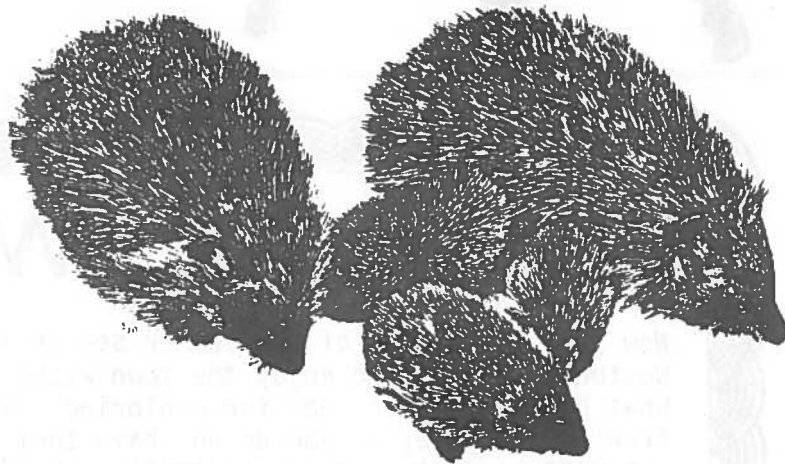
For more serious damage you may need to replace whole pieces of stone, or to build up your mixture on a supporting wire mesh. For serious cracks a bar inserted into the masonry may be needed. Here you need expert advice ask the Planning Department, Town Hall.

For other features you may consider using reconstituted Bath stone (a stone dust facing or a concrete base) of the kind we have used at Grove Park. This is cheaper than having genuine new stone cut and is fairly tough. Pieces can be cast for you to reproduce special features (e.g. ornamental balustrading on your garden wall - how much better than California breeze blocks!). Again the Society can give you information about the firms who will supply you.

('Cleaning stone and brick', Society for the Protection of Ancient Buildings, Technical Pamphlet 4.

-Building Research Establishment Digests Nos. 113,177.)

DIARY



Don't hibernate
this winter !

A U T U M N F A I R

Saturday 25th September at 2.00 p.m. Boulevard United Reformed Church Hall, Waterloo Street. Jumble, books, plants, bulbs, cakes, refreshments, etc. Admission 10p. Return the form if you can help on the day or can donate items for sale (we will collect).

P U B L I C M E E T I N G - H O U S I N G I N W E S T O N

Monday 18th October at 7.30 p.m. Discussion led by Councillor Ron Harrison (Chairman, Woodspring Housing Committee), Mr Donald Hardy (Director of Housing Services, Woodspring), and Mr John Gravell (Avondown Housing Association). The town's housing stock and modern needs - public money - local policies.

AUTUMN FAIR Saturday 25th September 1982

WILL YOU HELP THE CIVIC SOCIETY TO RAISE MONEY FOR PRACTICAL WORK IN WESTON ?

Please complete this form and return it to 'Weston Guild', 28 Orchard Street, Weston-super-Mare, or telephone Weston 24778 during shop hours.

*

I will supply the following for the Autumn Fair:

Jumble:

Clothes:

Books:

Plants:

Cakes, jam, etc:

Other:

I should like this to be collected:

I can help man a stall at the Fair:

Name

Address

