



SHIRTS WITH GUILD BADGE 2018-9

T shirts, polo shirts and sweat shirts are available embroidered with the Guild badge in black and silver. The badge is 75mm across and there is the option to have either your branch name or tower name embroidered horizontally below the badge. The garments are all made by Uneek Clothing, which are recommended for colour fastness. Sizes for Unisex Polo and Sweat shirts have proved to be on the generous side – please ask for samples. Please note that the colour range is different for different garments.

The **Order Form** is also available at <http://www.pdg.btck.co.uk/GuildShirts>

T SHIRTS Code UC301 **£10**

COLOURS: White, black, navy, royal blue, red, heather grey, maroon, sky, yellow.

SIZES

To fit chest size - inch

XS	S	M	L	XL	2XL	3XL	4XL
36	38	40	42/44	46	48	50/52	54

SPECIFICATIONS: 205/210 GSM, 100% Cotton, Reactive Dyed, Crew Neck, Taped Shoulder to Shoulder, Twin Needle Stitching on Neck & Shoulders.

UNISEX POLO SHIRTS Code UC101 **£15** **Long sleeve** code UC113 **£19**

COLOURS: White, black, navy, royal blue, red, bottle green, heather grey, sky, maroon, yellow, kelly green, orange, purple, charcoal, hot pink.

Long sleeve: only in black, navy, royal, bottle green.

SIZES – as for T shirts above.

SPECIFICATIONS: 220 GSM; 50% Polyester 50% Cotton; Reactive Dyed; Knitted Collar; Taped Neck Hemmed Sleeve & Bottom; 3 Button Placket

LADIES POLO SHIRTS Code UC106 **£15**

COLOURS: White, black, navy, royal blue, red, bottle green, pink, lilac, yellow, lime, sky, maroon, purple.

SIZES

(UK Size)

To fit bust size - inch

XS	S	M	L	XL	2XL	3XL	4XL
(8)	(10)	(12)	(14)	(16)	(18)	(20)	(22)
30	32	34	36	38	40	42	44

SPECIFICATIONS:; 220 GSM; 50% Polyester 50% Cotton; Reactive Dyed; Knitted Collar; Half Moon Yoke; Open Hem Sleeve; Taped Shoulder & Back Neck; Side Vents; Twin Needle Stitching; Washable at 60 Degrees; 3 Self Coloured Button Placket

SWEAT SHIRTS Code UC201 **£22**

COLOURS: Black, navy, royal blue, red, bottle green, heather grey, maroon.

SIZES – as for T shirts above.

SPECIFICATIONS: 350 GSM; 50% Polyester 50% Cotton; Reactive Dyed; Set in Sleeve; Lycra Ribbed Cuffs, Welt & Neck; Twin Needle Stitching at Neck, Shoulders, Armholes & Sleeves; Half Moon at Back Neck.

If none of the clothing options shown suit you, there is now the opportunity to send me your

OWN GARMENTS Code 'OWN' **£8**

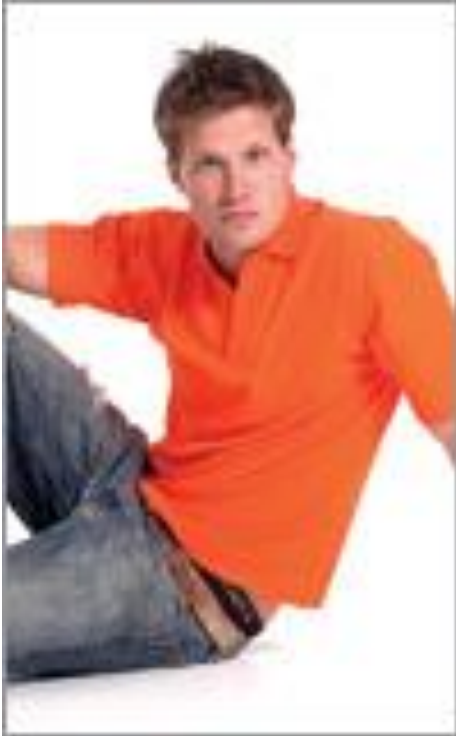
to be embroidered with the Guild badge and a branch / tower name. If you send it by post, I will return it that way and please add the postage to your payment; if you send it via ringers' network, I will return it that way.

Also available is a

GUILD BADGE Code 'BADGE' **£9** so that you can sew it on your own clothing.

Geoff Pullin - Guild Public Relations Officer

UNISEX POLO SHIRT
Code UC101 £15



LONG SLEEVE POLO SHIRT
Code UC113 £19



LADIES POLO SHIRT Code UC106
(shorter than UC101 and shaped) £15



SWEATSHIRT
Code UC201 £22



T SHIRT Code UC301 £10

