

Peppard News

A community newspaper for the parish of Rotherfield Peppard

Autumn 2014

Greenshoots Has Grown!

Greenshoots, which is part of The Ways & Means Trust, has been at the heart of this community for nearly 20 years and, in June this year, it was joined by the other areas of the Charity at Manor Farm. This move has been a tremendous undertaking for us, one that we could not have achieved without the fantastic support of local volunteers, who have given us their time and skills, as well as local businesses like Peppard Building Supplies and Toad Hall, who have given us free advice, encouragement and some bargains along the way!

Each week the Charity provides meaningful occupation for some 60 adults, with a variety of disabilities. It was founded in 1968 by a local psychiatrist who had the vision to see a need for those living with

mental ill health and learning disability. From its inception, the Charity has worked alongside the local community, whether businesses, individuals or groups. As well as supporting the service users, part of our role is to demystify disability, therefore our doors are always open to visitors, and we welcome invitations to speak at local groups.

Most visitors will know us as Greenshoots; a small garden plant nursery of some five acres, near The Red Lion pub, where we grow and sell orchard fruits, a range of currants and berries, salad crops and vegetables, as well as a limited range of herbs, perennials and bedding plants. In the last few weeks, with guidance from Tamsin,

Bosley Patch, Henley, we have introduced salad bags: delicious bags containing five or six varieties of leaves, harvested fresh from our beds. We have also been working on reopening our shop (just inside our main gate), where we want to have regular displays of fresh produce and later in the year launch a second-hand tool area - a charity shop for garden tools.

Greenshoots also has a thriving flock of egg-laying chickens, which, when they concentrate, may lay collectively up to 20 eggs a day, which we



Produce from Greenshoots

also sell. As I write, they have been given a rich gift: the Crowne Plaza Hotel donated a new chicken house, able to sleep up to 35 birds and to keep them warm in the winter months. The Hotel also allowed some 15 employees to spend the day at Greenshoots, building the chicken shed and a sixty-foot raised plant bed. Increasingly we use raised beds for growing; not only do these better suit those in a wheelchair but also our soil is predominantly clay and flint, which tries the patience of root crops. Raised beds provide better control of soil quality and we are able to grow straight carrots!

More details are on our website: www.waysandmeans.org.uk.

Frances Hill, 01491 628933



A support worker helping her students

New Layout Sub-Editor Required

Would you like to join our friendly Editorial Team of volunteers using DTP software to produce *Peppard News*?

All software will be provided.

Full training and support will be given.

For more information call Rita Hadgkiss on 01491 629996 or e-mail peppardnews@btinternet.com

Peppard News is a quarterly community newspaper published by Peppard News Publications with financial support from Rotherfield Peppard Parish Council, and is distributed free within the parish of Peppard. Views expressed are not necessarily those of Peppard News Publications or of the RPPC unless stated as such.

e-mail: peppardnews@btinternet.com www.PeppardNews.co.uk

Contributions accepted via e-mail or post to Jennifer Smith, Molehouse, Church Lane, RG9 5JN Advertising: Ian Fraser - phone: 01491 629631

Printed by Fericon Press Limited

Our Schools

What a Smashing Year!

On behalf of the Friends of Peppard School (FOPS) team we would like to extend a HUGE thank you to all the parents, staff and residents who have volunteered their time and skills, and to those who have supported our fundraising activity over the past school year.

We've raised a good sum which has been fed directly back into the school through the funding of a new minibus enabling the children to use local facilities whilst saving money on travel for the school, the purchase of musical instruments and outdoor play equipment and the purchase of a shed-load of paint to give the school a mini-makeover; plus lots, lots more. We have further plans for improvements to the school's facilities (to include the playgrounds).

As well as our fundraising activities, let's not forget our 'purely for fun' activities we organise for the children (and parents!); Movie nights, discos, Santa visits, Easter Egg Roll and, of course, Mums' and Dads' nights - as long as we're having fun then we are achieving our goals.

We're looking forward to the new school year and welcoming our Foundation parents to the fold. We hope that with the same support, hard work and dedication, 2014/2015 will be just as successful!

Shenan Swanwick

Working Party

We're having another attempt at a working party on Saturday 6th September at 10:00 - weather permitting. The aim is to give the school some TLC through a lick of paint and a general tidy up.

All parents and local residents are welcome and we'll supply the tools for the job. Unfortunately, for health and safety reasons, we cannot allow children to be present.

Peppard C of E Primary School

Peppard Common RG9 5JU
Phone: 01491 628354

Headteacher
Nick Steele

Chairman of the Governors
Christine Bradbury

If you're interested in helping out, please contact Fiona at the school or shenan.morgan@gmail.com.

Shenan Swanwick

Peapods Nursery School

We started the summer term with the topic of growing: Living Eggs supplied some chicken eggs that hatched and the children helped care for the chicks. Also, one of our grandmothers brought in frogspawn and after many weeks, we had lots of little frogs. We have had great fun in our new garden and have been very successful with produce.

With different themed weeks the children have learned about the environment, musical instruments and various wild animals.

During our annual Regatta picnic the children helped to prepare food and had fun rowing in the boat. We also had our very first Maypole dance and, to end the term, Sports Day and Graduation.

We are very sad to say goodbye to eight children who are starting school in September; we wish them all the best in their new adventures and look forward to them returning for holiday clubs.

If you would like to arrange a visit please contact Louisa on 01491 628395 or e-mail

louisa@peapodsnurseryschool.com.

For more information see:

www.peapodsnurseryschool.com

Louisa Hopcroft

Our Young Achievers

Finn Colin's Charity Walk

Finn, his family and friends, walked through the night for a charity called the Alzheimer's Society. Finn's Grandma has the disease and he had wanted to raise money for quite a while; he had an idea that would make a difference. Finn decided to arrange a charity walk, his family supported him by spreading the word through social media and making a webpage where people could donate.

On the night of the walk, Finn and his family went to Pizza Express in Wallingford at 10pm to have a meal before they started their walk. At 10.30pm they were ready to start the walk, the hardest part was walking through Grims Ditch because it was all uphill. After this they stopped for a break, to have some sweets and energise themselves for the rest of the walk.

They finally got home at 3.30am, but stayed up to watch the sunrise at 4.30am.

Finn's family and friends were very proud as he had raised a whopping £1500.

**Darcey and Harry,
Junior Peppard News Editors**

Archie Wood

Archie, a budding young artist from Peppard, spoke very enthusiastically about his passion for art. When asked when he got interested in art, he explained that two years ago he had been watching art videos on how to make sculptures out of icing. He started small with things like rabbits and moved onto bigger and more complicated things. He enjoys learning through books and videos and trying his own ideas.

Archie, 9 yrs, explained that he specialises in photographic art, turning pictures into human portraits. Archie said that his favourite piece of work is one of Nelson Mandela because it shows the symbolism of freedom and peace. He said that he

SPRUCE MAINTENANCE SERVICE

For all your property maintenance requirements:

Decorating inside and out; Paper hanging; Carpentry - including door easing and hanging; Wall & Floor Tiling & Silicone Renewal; Plumbing - leaking taps, etc; Hedge Cutting & Planting, Patios, Landscaping & Garden Design.

ROB SMITH

TEL: 0118 972 4560

COMPASS ELECTRICAL

All domestic/commercial

Internal & external

ELECSA registered & approved

Local & reliable

Please call for a free quotation

0118 972 3972/07737 413314

HOBBS OF HENLEY LTD

THE BOAT PEOPLE

at HENLEY-on-THAMES

DAY BOAT HIRE - PASSENGER BOAT AND PARTY HIRE

Repairs, Fuels & Service

BOAT & ENGINE SALES

Established over 130 years - Telephone (sales) 01491 572 035

WEE-COT SEATING

*Upholstery, Loose Covers, Replacement Cushions,
Chair Caning, French Polishing and Furniture Repairs*

LIZANNE SMITH Tel/fax 0118 972 4560

Snippets

was inspired by everyone because art is all around him and hopefully he'll be able to inspire others through his art work.



Archie Wood

His latest piece, of the human eye, he entered into the Henley Youth Festival and was highly commended by the judges. Archie told us that his talent and artist flair comes from his great-grandmother. When asked whether he wanted to pursue a career in art, he told us that he thinks he could have a career but he would also like to be an architect, biologist or a doctor.

Harry Ayers and Darcey Smith,
Junior Peppard News Editors

Further Success for Sam!

Congratulations to 18 year old Peppard kayaker Sam Kirschstein-Smith who, as part of the crew in the K4 1,000 metre event, broke the English junior record at the world championships in Hungary this summer. More about Sam's successes in Hungary in the next issue of *Peppard News*.

Sue Nickson

In the Swim Again!

Last summer, 13 year old Peppard boy Henry Bell did a sponsored swim in Cornwall raising £800 for Marie Curie Cancer

Care. In July this year he did the same one mile swim but in a faster time of less than 20 minutes! So far Henry has raised over £650 for the same charity and hopes to at least equal last year's total.

Sue Nickson

Christina Berry

Christina is a 10 year old horse rider and has achieved outstanding standards; she started riding at the age of three having been inspired by her mother and sister as they were riders before her. When Christina was five she gave it up for a year but when her sister got a new horse Christina got back into riding.

Christina has owned many horses but the horse she owns and uses at the moment is 11 year old Ollie. All her horses have won many competitions; her room is full of all the rosettes and medals she has ever won. There is a massive trophy cabinet in their hall which stores all the trophies Christina's family have ever won.

Lillibeth Biggin and Kaan Ozgu,
Junior Peppard News Editors



Christina Berry

Defibrillator Training

Now that we have our refurbished telephone box outside Peppard School containing a brand new defibrillator, we are ready to train you how to use it.

Dick Tracey, State Registered Paramedic from the NHS Ambulance Service, will hold a session of defibrillator training on Saturday 13th September at 09:30 in the Sports Pavilion on Stoke Row Road. The training will take around 1½ hours and will include a talk and then some hands-on practice with a dummy.

Everyone is welcome to attend the training, which is provided free of charge - although a donation can be made on the day to the League of Friends to help purchase further public access defibrillators across the Thames Valley.

The Parish Council will provide complimentary tea/coffee and biscuits. Please let Linda Collison know if you are interested in attending or if you would like further information: clerk@rppc.org.uk or phone her on 01491 629676.

A Boost for the Skate Park

Congratulations to the team of cyclists from the Butcher's Arms pub who completed an 89 mile ride to Brighton. The pub landlord, Robert Blues, presented a cheque for £2,145 to Sonning Common Parish Council for the skate park. Robert and his wife Ellie have also won a hospitality award from Brakspear Brewery.

Scams Warning

Scams can come by letter, phone call, doorstep sellers or website. Most of them aim at deceiving people into giving away sensitive information or parting with their money. If anything suspicious comes your way report it to Action Fraud on 0300 123 2040, contact Trading Standards through CAB consumer service on 08454 040506 or CAB advice line on 08444 111444.

Do you need an Accountant?

- Self Assessments
- Business Advice
- Corporation Tax Returns
- Accounts
- Business Start-Ups
- VAT

Phone Keith Jefferies ACMA

on 0118-9722611 or 07749-415264
for a free initial consultation

T.C. FULLER PLUMBING & HEATING

Installation, Maintenance, Service, Repair



- *Free Estimate
- *No Callout Charge
- *0118 972 4097
- *078009 14880

GAS SAFE REG.NO. 225032

the **studio gallery** OPEN
Wed 10am - 2pm
& Thur - Sat
10am - 4.30pm

Specialists in Bespoke...

FRAMING . PRINTING
ART . DESIGN . GIFTS . IDEAS

LOVE LOCAL... VISIT MANOR FARM...
SUPPORT YOUR NEIGHBOURING SMALL BUSINESS & CHARITY...

www.studiogalleryuk.com

Manor Farm, Peppard Common, H-o-T, RG9 5LA t: 01491 629635

The Councils

Parish Council News

Many of you will know that David and Alison Hammond recently moved away from the area and David has accordingly resigned from the Parish Council. All the Councillors and Clerk join me in thanking David for his five years of service on the Parish Council, and particularly his leadership and guidance as Chairman during the last two and a half years.

At the monthly Parish Council meeting on Monday 11th August, I was honoured to be elected Chairman. I look forward to following in David's footsteps with aims of maintaining a lively and involved Parish Council preserving the rural aspects of our lovely area while still being able to benefit from 21st century technology.

Last month, South Oxfordshire District Council resolved to maintain the boundaries of our Parish as they are. We are of course delighted with this decision, especially for the 200 or so households who might have been transferred. From the many letters, e-mails and phone calls we received this would have clearly been against their wishes. Many thanks to all those residents who rallied support and made their views known to SODC.

Since the last *Peppard News* the council has started a Parish E-mail. The plan is that this will give us a quick and efficient means of communicating with residents and keep everyone informed of events in our village. At the time of writing we have about 100 e-mail addresses: these are only known to the Clerk and will not be disclosed or shared with anyone and will not be displayed on the e-mail.

Very important to our rural lifestyle are the many footpaths that criss-cross the parish. It is timely to remind landowners who have hedges or trees bordering these footpaths that it is their responsibility to ensure that they are kept trimmed so as not to block the paths. Another thank you, this time to the Green Gym who have done such a quick and excellent job repairing the wooden kissing gate near Springwood.

At the Parish Council's instigation, we have had a site meeting with David Bartholomew, our Oxfordshire County Councillor, and Road Safety Officer, Anthony Kirkwood, to discuss the dangerous junctions at Bolts Cross and Gallowstree Road/

Parish Council

Chairman: Tony Cotton
e-mail: chairman@rppc.org.uk

Parish Clerk: Linda Collison

7 Grange Avenue, Rotherfield Peppard,
Henley on Thames, Oxon RG9 5LD
01491 629676

e-mail: clerk@rppc.org.uk

Website: www.rppc.org.uk

SODC Councillors: Paul Harrison
0118 972 2665

& Alan Rooke—01491 572919

OCC Councillor: David Bartholomew
07769 808773

e-mail:

david.bartholomew@oxfordshire.gov.uk

Rotherfield Peppard Parish Council usually meets on 2nd Monday of the month at 19.30 in the Pavilion. Parishioners may attend and observe, and may briefly raise issues of concern to them. All may attend intermediate planning meetings as well - see Diary for dates and times.

Stoke Row Road crossroads and various areas of serious road flooding. Following this meeting, road markings have been improved and signs cleaned.

Work has been undertaken to alleviate the flooding on Stoke Row Road and, at the time of writing, has just started on Gallowstree Road. Both of these works are a first stage to resolve the problems and further action is anticipated to ensure they do not re-occur.

Residents can report potholes or other road problems at www.fixmystreet.oxfordshire.gov.uk. If you spot fly tipping this can be reported at www.southoxon.gov.uk/services-and-advice. Using these website links is the best way to obtain prompt action.

In my new role as Chairman I hope to hear your thoughts and views (chairman@rppc.org.uk) and I look forward to welcoming you at our meetings and to your continued support.

Tony Cotton

From John Howell MP

In recent communications, John Howell comments on the commemoration of the outbreak of the First World War. He spent a few moments at the War Memorial in his own village of Warborough,

joined three different communities at different times on Sunday 3rd August and attended Christchurch Cathedral for a special service on 4th August.

He is also keen to keep in touch with his constituents. He produces regular newsletters and briefings and enjoys the exchanges that often arise from them. If you would like to receive these, please e-mail asking to be put on his circulation list: howelljm@parliament.uk.

Village E-Mail

It has been suggested that a village e-mail service for Rotherfield Peppard should be introduced to enable the Parish Council to communicate parish 'matters' to as many people as possible in the Parish in a timely, i.e. fast, manner.

E-mails concerning subjects such as the recent boundary issue would be covered, but also Reading's 3rd bridge and weekly planning applications in the village could also be included.

The service would be free, managed by the Parish Council, and all e-mail addresses will remain confidential.

If you would like to subscribe for this please let me know (see panel) - and also, if you have any suggestions regarding the service, those too would be much appreciated.

Linda Collison

Oxfordshire Rural Community Council

Advance notice of Annual Conference and AGM on 18th September 13:30 for 14:00 start at Yarnton Village Hall OX5 1TE. What is the role of the community and the voluntary sector? The debate will be about housing development, economic growth and the ageing society.

Affordable Rural Housing

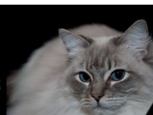
The Oxfordshire Rural Housing Partnership is keen to see affordable homes being built for local people. Landlords are asked to make contact if they would like their land considered as a Rural Exception Site which is attached to, or within, a village but would not be considered for normal development. For more information contact Jill Brooks on 01865 883488 or e-mail orccc@oxon.org.uk.



Sonning Common Pet Care

Dog Walking, Boarding, Puppy Visits
Home Visits for Cats, Rabbits
& Other Small Animals

Contact Alison Cartwright
Tel 0118 9722948
07787 114536



54 Woodlands Rd
Sonning Common
RG4 9TE

Gardiner's
NURSING AND HOMECARE

Dedicated and reliable nurses & carers since 1968.

0118 947 6666

More Snippets

Village Travels

As a civil servant, Sonning Common resident Andrea Golder's role was to organise events and trips for colleagues.

She loved it so much that when she retired three years ago, Andrea decided to continue running events for her local community on a not-for-profit basis. Peppard residents may also be interested in joining these events which include day trips, theatre trips, as well as short breaks.

So far this year, Andrea has flown a group out to Florence and has also recently returned from a short break to Flanders and the Somme which was particularly poignant during this WWI centenary year.

If you would like further information about future events please call Andrea on 0118 972 2995; e-mail her on amgolder@hotmail.com or see her website: www.thamesvalleytours.net.

Message in a Bottle

The Lions Club is running this project: it is a small plastic bottle that holds a leaflet of the user's medical data and next of kin contact details. It is placed inside their fridge where paramedics can access it in an emergency.

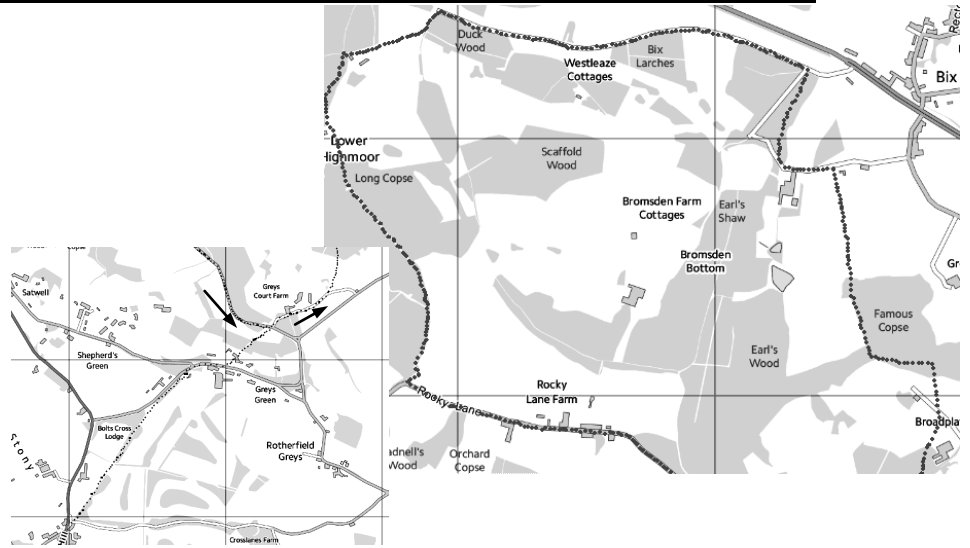
This can benefit anyone whatever their age or state of health. The system is simple and bottles can be obtained free from GP surgeries, chemists, council offices, police stations and your local Lions Club.

Lions Club

Our Annual Conker Competition will take place at Crosslanes Fruit Farm Apple Day, near Mapledurham, on Sunday 12th October 10:00-17:00 to raise funds for charity.

Anyone interested in joining the Lions Club contact Derek Robinson on 01491 872857, Alan Wright on 0845 8339837, or Jon Solman on 0118 947 1970.

My Favourite Walk



Maps by Ordnance Survey OS OpenData

As a local to Peppard and a keen walker, there are some lovely walks from Peppard Common to Bix, Henley, Greys Court, Stoke Row or Kidmore End. One of my favourites is a circular walk from the Red Lion (Peppard Common) to Greys Court with some spectacular views, lots of woodland, fields, a few tracks, quiet lanes and no roads! You could be far from anywhere.

You return through Bromsden Estate, Shepherds Green, and are back in approximately 2½ hours. There is a shorter walk, starting at the Greys Court car park and returning to Greys via Rocky Lane.

Upon leaving the Red Lion, cross the main road to Greys Green golf course, take the footpath to the left of Dog Lane and follow it to the Greys Road, turn right, taking great care along this very busy road, and then left across Greys Green cricket pitch then follow a footpath at the back towards the woods. At the gate/stile go down across the field to the gate, then straight towards Greys Court. Bear left to '1st gate to Felix's Gentle Path'. After 50 yds go over foot-

bridge and take left footpath towards woods. Cross two fields and cross lane to 3rd field to woods. At a crossing of paths, turn left, then first path marked yellow on tree, turn right through Famous Copse. With field on your left, continue to cross a stile to 'farm field', take a left across meadow crossing three stiles, then left to a farm track. Keeping to the right of the farm buildings, turn right to woodland. Take left path, through two gates to woodlands where path joins from left. Keep straight on through new plantations to your left. At crossroads of paths, go straight on to yellow waymark through woods to stile. Over meadow and along a tarmac track passing then turn left through the Bromsden Estate, going through Scotland, to a cattle grid. Turn left into Rocky Lane, at the pond turn right marked Shepherds Green ½ mile. At the main road, turn left towards Greys Green golf course to retrace your steps back to the Red Lion.

Sue Howman

Do you have a favourite walk that you would be happy to share with our readers? Peppard News would like to hear from anyone with a favourite walk.

UNICORN GARDENING SERVICES
REFLECT YOUR HOME INTERIOR
 with
A BEAUTIFUL GARDEN
Local Friendly Service
Tel: 01235 850617



Greetings Cards Gifts Helium Balloons Stationery
Shoe Repairs Dry Cleaning Alterations

Occasions

23c Wood Lane, Sonning Common
0118 972 3358

PEPPARD BUILDING SUPPLIES **FIRST CHOICE FOR THE PROFESSIONAL**

***FREE LOCAL DELIVERY**

- Competitive Trade Pricing
- Bulk Bags
- Specialist Insulation Stockists
- Indian Sandstone
- Bricks/Blocks /Aggregates
- Trade Shop
- Plenty of Parking
- Web Offers!



Call 0118 972 2028 / Sat Nav RG4 8XA
 Visit www.peppardbuildingsupplies.com

*Terms and Conditions apply

Our Village

Phone Box Back In Use

Early June saw the unveiling of the refurbished phone box before parents from Peppard School, Head teacher Nick Steele, Parish Councillors and members of the Flat Earth Society who carried out the work under Alan Smith's direction.



Telephone Box Defibrillator Inauguration
Photo by Wendy Taylor

The box now houses a defibrillator donated through the charity *Millie's Dream*. Millie, a pupil at Rupert House, cut the ribbon after her mother Sarah Roberts gave a brief speech explaining the aims of the charity. She said 'I am delighted that the Peppard Defibrillator is the first Community one in the scheme'. After the opening ceremony everyone enjoyed drinks and cup cakes provided by Valerie Ross, one of the Parish Councillors.

In addition to the defibrillator, the box will display photographs of aspects of Peppard life through time. The photographs were copies provided by Sylvia Seymour, while Peter Ballard was responsible for the hanging of them. The Flat Earth Society would like to change the photographs periodically. If members of the Parish would like to donate copies of old photographs please contact Terry Ryan at tryan123@btinternet.com.

Terry Ryan

FISH Bus

As well as regular shopping trips, the leisure trips planned for this autumn include visits to the Shuttleworth Collection and the Swiss Garden, British Museum, Lords Cricket Ground, Bletchley Park, Newbury, High Wycombe and Thame Market.

Details of all monthly trips can be found on local noticeboards in Peppard and Sonning Common (available from 20th of the preceding month) or contact the FISH Office on 0118 972 3986 from 09:30 to 11:30 every weekday or visit the website on www.fishvolunteercentre.co.uk

John Pearman, Bus Manager

Commons News

The summer months have seen prolific growth on much of the commons. Our mowing regime is underway on the open areas of grassland and the landscape will soon change. Often, we are asked why grass cutting is not more frequent or earlier in the season. It is because we need to wait until the wild flower seeds have fallen and also that the nesting period is complete; this normally means waiting until the end July. We aim to rough cut the open grassland areas only once in the season - the only exception is the area used by Peppard School as their sports field.

Our much-appreciated volunteer team - KPCV - has been extremely busy. We always welcome - and need - more volunteers to help manage our commons and join in whenever they can - many hands make light work! The fantastic work that the team does, including path clearing, helping to stimulate the heather growth and maintaining the open glades, is there to be seen. Hopefully, the Green Gym will be back working on our commons in the late autumn.

A cautionary note: Japanese Knotweed is regarded as one of the world's worst invasive plants, according to the World Conservation Union, and is a difficult and expensive plant to remove. Removal, or trimming, should not be attempted without expert assistance. We have (hopefully) successfully eradicated areas of it on Kingwood, but there may be other areas where it is growing unchecked. If you happen to identify this plant growing on our commons, please advise Elizabeth Smeaton:

clerk@nettlebed-commons.org

Nigel Wooding

Library News

By the time you read this Sonning Common Library will have been running for several weeks with the help of volunteers. They all attended at least three training sessions but please be kind to them when you come into the library: they're *still* learning!

Rosemary Dunstan

Peppard Revels Films

We are delighted to announce that the films will start again on 17th October with *The Glenn Miller Story* describing the life of one of America's greatest band leaders. On 28th November we have *Made in Dagenham*, a funny tale of how a group of women took on the management at the Ford car plant to get equal pay.

If you've not been to one of our film shows before, do come. You need to book because we have to know how many suppers to cook (and you get a glass of wine!). We strongly recommend you book early because we were full twice earlier this year and we had to turn people away. Call or e-mail Linda Collison on lindacollison1@aol.com or 077 477 62871. £10 - a bargain!

John Hasler

Greys Court - Big Harvest

A celebration of the harvest with a wide variety of stalls including produce, local arts and crafts, children's activities and so much more will be held on 20th and 21st September from 10:00-17:00.

Health Walks

We've enjoyed some beautiful summer walking in the local area, whatever the weather! We always welcome new walkers and with such beautiful countryside around us, walking is a really pleasurable way of keeping fit and making new friends.

Our new programme of free daily walks begins on Monday 8th September, and if you've never been on a health walk, autumn is the ideal time of year to try one: not too hot, and hopefully not too wet! We aim to have two trained leaders (volunteers) on every walk, one to lead the way, and the other to bring up the rear to ensure no one gets lost.

The new timetable is available from the library, the Health Centre and the Herb Farm, or on the website at www.sonningcommonhealthwalks.co.uk/timetable. If you'd like to talk to someone about the health walks, phone Colin Davies on 0118 972 2527

Rosemary Dunstan



An Emporium of Indian Cuisine

Fully Air-conditioned

Open 7 days a week, including bank holidays

Take-away menu - prompt service

21 Wood Lane, Sonning Common - Phone: 0118 972 3104/1054

Nuffield Place

Nuffield Place is celebrating its 100th year this year. In the house we are asking visitors to contribute to a tapestry celebrating the centenary which is on display in Lady Nuffield's sewing room. There is a display throughout the house, ending on 14th September, charting what was happening at Nuffield Place in the summer of 1914.

Recently the Iron Lung has been put on display again at Nuffield Place, with some interesting information from our archives.

If you own a Morris, Wolseley or a vintage car associated with the Nuffield company you are welcome to park outside the house during your visit. Contact paul.cook@nationaltrust.org.uk, 0118 954 0011 for details.

The charity Italian Job drive to and from Italy, involving 40 to 50 cars, arrives at Nuffield Place on 1st November at 14:00.

Louise Walker

Peppard Revels 2015

The Peppard Revels Organising Committee is pleased to announce that the next main Revels event will be held during the 2015 Spring Bank Holiday weekend (23rd-25th May). The theme of the event will be *At the Movies* and will be a family event on the Saturday, including an Olympics-type team competition during the day and a film in the early evening, with food and drinks available throughout.

On the Sunday morning there will be an ecumenical church service, involving all our local churches, in the main marquee to which everyone is welcome. This will be followed in the evening by the main event, a black tie dinner. We will encourage guests to dress up in their favourite *At the Movies* outfits to coincide with the main theme. In addition to the dinner, there will be dancing to a live band, fireworks and a range of other activities during the evening. Tickets will be available from early 2015 and local residents will be given priority for early booking.

More information is available on www.peppardrevels.org.uk. So, make a note of the date in your diaries - we look forward to seeing you there!

Gavin Brooks

Patient Forum

Wood Lane Dentistry is committed to being a positive part of this community.

To this end we are looking for a team of volunteers who would be happy to serve on our patient forum. This would require no more than one or two meetings a year, probably in the evening. Your role would be to represent the patients of the practice and help shape the services that we offer this community. For further details/expressions of interest contact the surgery or e-mail vik.chugani@woodlanedentistry.co.uk

Vik Chugani

Concert Enjoyed by All

At a recent concert in aid of the Peppard Educational Trust, Claire Overbury on flute, and Elena Zucchini on guitar, delighted the audience with their Spanish/Latin American-style music. Claire, from Peppard, works closely with Elena, who hails from Tuscany, where she was inspired by listening to her uncle playing classical guitar and flamenco music.

At first sight the combination of flute and guitar might have seemed unpromising – where is the repertoire? Playing to a packed audience, Claire and Elena demonstrated both passion and extraordinary technical skill with the exciting blend of instruments. The interaction was at times fierce and sometimes tender, always technically exact and a deep pleasure to listen to. They explained their pieces to the audience in a light-hearted but well-informed manner, which added to the enjoyment of the evening.

The Trust was established from the proceeds of the sale of the old Peppard Middle School in the 1960s. This small charity has supported many local children and young adults; typical projects have been participation in the World Scout Jamboree in Japan, a volunteering visit to a school in Cambodia, an accelerated Maths course for young children at an Oxford College, entry in the BMX European championships, a World Challenge Expedition to Romania, equipment for a young kayaker hoping to compete in the 2016 Olympics, attendance at specialist music courses and primary school trips.

Ian Heriot

Peppard War Memorial Hall

I still have the happy sound of so many people coming together for the Commemorative Tea Party held in your Memorial Hall on Monday 4th August to remember and pay tribute to those local soldiers who never came home. A time of Remembrance for the soldiers named on the plaque was led by Nick Launders and Barbara Butler laid a wreath.

After this ceremony I had the privilege of introducing Mike Willoughby who, with the help of his wife, has spent the last ten years researching all the War Memorials in the Henley area, including Peppard.

A wonderful tea was enjoyed by about 60 people and a commemorative cake was cut by Mrs Molly Walker who, at 105 years young, felt very proud to play a part in the afternoon. To round off the afternoon the singing of WW1 songs was led by Nottakwire followed by a commemorative Toast, kindly donated by Barbara and Tony Laithwaite.

To add a perfect touch we received a message from the Queen thanking us for organising the party and wishing us every success. My thanks to a great team of people for making the day happen.

More details and pictures will be available on our website (www.peppardwarmemorialhall.btik.com).

Clive Mills



Nick Launders and Barbara Butler

Make a bee line to
BRAMBLES 
for Fresh Flowers, Bouquets, Plants and more  **0118 9721240**

Wedding flowers
Funeral tributes

Opposite village hall car park exit
42 Wood Lane Sonning Common

Our Churches

All Saints' Church of England

Rector: Revd Canon Graham Foulis Brown 0118 972 3987
Associate Priest Revd Susan Cooper 0118 437 5734

Churchwardens: Adrienne Heriot 01491 629254
Margaret Woodward 0118 972 2296

www.allsaintspeppard.org.uk

From the Rectory

On 4th August, the centenary of the commencement of the Great War, both the parish churches I serve rang a bell, at 30 second intervals, once for every name on the WW1 memorial, commencing at noon. Over the next four years we are told there will be other ways in which WW1 will be marked. For rather than the *Great War for Civilisation* as it says on one of my grandfather's medals, it was to become 'WW1' barely 20 years later.

Some War Grave Commission stones bear the inscriptions *A Soldier of the Great War* or *Known unto God*. In WW1, if they died in a Field Station it was more likely that they knew who they were and their name is on their stone. In 1920, a British soldier was disinterred to be reinterred at Westminster Abbey, as the Unknown Warrior – buried in English oak, in French soil, with a Belgian marble memorial, the brass lettering made from used cartridge cases, melted down. For bereft families and for nation it marked the end.

It was thought that it could never happen again but it did, and it continues to happen every day and we read about it in our newspapers. In church we pray for the coming of God's kingdom, which has yet to dawn upon the world but it does fall to each one of us to do what we can to broker peace and to maintain it, until that day comes. Great oaks, from tiny acorns grow.

Graham

Harvest Lunch

Your PCC invites all friends and Electoral Roll members of All Saints' Church to join them for a Harvest Bring and Share

lunch which will take place at Peppard War Memorial Hall following the Harvest Thanksgiving service on 28th September at about 12:30. There will be a retiring collection which will be used towards costs and any surplus will be donated to the local charity, Peppard Relief in Need. Tickets need to be booked so as to know the number of people to accommodate.

Offers of help with laying out the food and washing up afterwards would be greatly appreciated please. Also, can anyone devise some quiz sheets for use during the lunch? For further details please contact Ian or Pat Fraser on 01491 629631.

Bishop John's Farewell

Saturday 20th September is an opportunity for the whole Church family to join and say goodbye to Bishop John as he retires. Organised by the Diocese of Oxford, this occasion provides an opportunity to gather together on Christ Church Meadow, Oxford, to give thanks for Bishop John's ministry among us. Further details can be found on the notice board at All Saints' or on the Diocesan website: www.oxford.anglican.org.

Fellowship of St. Birinus

David Butler has recently been invited into membership of the Fellowship of St. Birinus, in recognition of his work in the area over more than 25 years. This is an honorary fellowship awarded by the Bishop of Dorchester to individuals who have made an outstanding contribution to Church life over a period of time. A service will be held at Dorchester Ab-

bey on Sunday 21st September at 18:00. Hence there will be no service of evensong at All Saints' that evening.

RSCM

The Annual Choirs' Festival takes place in St. Helen's Church, Abingdon on Saturday 4th October. All are invited to attend the evensong service at 17:00.

Margaret Woodward

Anniversaries

Anniversaries, happy or sad, mean a lot to all of us. Would you like the Flower Guild at All Saints' Church to arrange a pedestal of flowers in church for you on the Sunday nearest to that special day? There will be a small charge. Phone Ann on 0118 972 1871 for more information.

Your Choir Needs You

Our choir has a long and distinguished history: we would, however, like more voices in the adult choir. We are very fortunate to have a strong junior choir trained by Rebecca Bell through the RSCM Voice-for-Life scheme. The members attend RSCM singing courses and the annual festival during the year, giving them a musical grounding which will stay with them throughout their lives.

I found the following on a website and it is so true: *Group singing is cheaper than therapy, healthier than drinking, and certainly more fun than working out. It is the one thing in life where feeling better is pretty much guaranteed.*

Why not try it? I would be very pleased to hear from anyone who would like to join us (call me on 0118 972 4065). We rehearse on Thursday evenings at 19:30 in the Parish Room and will be working hard on music for this year's RSCM festival and also for the annual Henley Choirs' Festival to be held as usual in January, plus music for Advent and Christmas.

David Butler

PEMBROKE GLASS

UNIT 12, MANOR FARM, PEPPARD COMMON, RG9 5LA
YOUR LOCAL GLASS AND GLAZING COMPANY
CALL FOR ADVICE & FREE QUOTATION

We also supply & install or supply only all types of windows, doors and conservatories in UPVC, hardwood, aluminium, etc.
Tel: 01491 629901 Fax: 01491 629904

Bondright Roofing Services

DOMESTIC, COMMERCIAL & INDUSTRIAL ROOFING & EXTERIOR MAINTENANCE

Your Local Roofing Company

Used by local leading Estate Agents Based in Henley

www.bondrightroofing.co.uk

Tel: (01491) 579659



A.B.WALKER

& SON LIMITED

FUNERAL DIRECTORS. EST.1826

Independent 5th Generation Family Run Funeral Directors and Monumental Masons

- 24 Hour personal assistance from 6 offices with parking
- Competitively priced modern and traditional options
- Pre-paid funeral plans
- Stone memorials & Grave tending service

Henley-on-Thames 01491 413434

Caversham 0118 9477 007

Reading 0118 957 3650

www.abwalker.co.uk



St Michael's Catholic Church
 Father Paul Rowan 0118 972 3418
 Deacon Francis Andrews 0118 972 2354
 Deacon Brian Theobald 0118 972 2796
 e-mail: stmichaels.rc@hotmail.co.uk

You might have read in the *Henley Standard* that I was ordained deacon on 20th July and will serve in the parish of St Michael's, Sonning Common. I would like to take this opportunity to thank members of All Saints', Peppard who took an interest in my progress during the four years of formation and for their congratulations and best wishes upon my ordination. These have been a great encouragement to me and it is wonderful that we can share in each other's joys.

I was ordained with five colleagues before which we had to undertake a week long retreat. We were free to choose where to go and I went to St Beuno's, the Jesuit spirituality centre in North Wales for an

individually guided retreat. It was with some trepidation that I arrived because, except for 45 minutes each day with my spiritual director, there was no other talking during the week even though there were about thirty on retreat at the same time. The retreat was based on the spiritual exercises of St Ignatius and a significant amount of time was spent in 'imaginative' or Ignatian contemplation. It is a way of entering into Scriptures, particularly the Gospels, and allowing the risen Jesus to speak. This is where the silence is so important because if there are constant distractions we are unable to listen so will not hear. This contemplation took place in the quiet of my room or one of the chapels but quite often slowly walking along one of the many footpaths overlooking the beautiful scenery around St Beuno's. It soon became apparent that living in or close to Peppard readily lends itself to this

type of prayer. Find a period of time when you can be alone. Switch off all forms of communication with the outside world, read a short passage from one of the Gospels, e.g. the wedding at Cana, feeding the 5000, and then set out along one of the footpaths or sit quietly in the church if it is open. During this time of silence engage with the people from the Gospel passage and believe that Jesus will speak. We are so lucky to have places of silence so close to us. Do we appreciate it?

It might be hard to believe but during that week there didn't seem to be enough hours in the day. Also, when we spoke to one another for the first time over breakfast before departure we knew we had shared a special journey with one another. I hope to go back to St Beuno's one day but, in the meantime, I know I can find silence along the footpaths in and around Peppard.

Brian Theobald



Revd Chris Lewis
 0118 972 4519
 www.springwater.org.uk

The Harvest Season

This year harvest has come early. The farmers work long hours 'bringing in the sheaves,' and 'while the earth remains, seedtime and harvest, and cold and heat, and summer and winter, and day and night shall not cease'.

The four seasons are like periods in our life: Spring; light, new birth, sowing. Summer; work, family, growing. Autumn; gathering, shedding, preparing. Winter; reflecting, waiting, darkness approaching. Some people live for one brief season,

others enjoy the best and worst of all four.

This summer I holidayed in France and was surrounded by fields of maize and wheat. The maize was as 'high as an elephant's eye' and in the tall wheat fields was also growing tares. Wheat is good, but a tare is like darnel, it can corrupt a crop and is poisonous. The wise farmer waits until harvest when he separates the corrupt to preserve the good.

In Vivaldi's concerto the *Four Seasons* the second movement of *Autumn* is called *the drunkards have fallen asleep* possibly referring to after the harvest when a well-earned rest and merriment occurs. When it comes to faith people

are like wheat or tares. Some are like drunkards, who've adopted the 'eat, drink and be merry for tomorrow we die' philosophy over pondering divine truths regarding the meaning of life, salvation, and their future eternal destiny. Others have simply fallen asleep.

If the days of the week each numbered ten years, then Monday to Sunday total 70 years; some live longer and are in Bank Holiday Monday or Tuesday. I wonder what day or season you're in right now? We don't have long on the earth, and when the harvest of souls is fully gathered -in by our Lord and Saviour Jesus Christ will you be grouped with the wheat or the tares?

Revd Chris Lewis

GRAHAM'S MAINTENANCE



Painting & Decorating - Fascias & Soffits
 Door & Window Fitting - Plumbing
 Fitted Bathrooms - Floor & Wall Tiling - Fencing & Decking
 Wood & Laminate Flooring - Sheds Supplied & Fitted
 Garden Maintenance - Guttering & Flat Roofing, etc. ...
Free estimates 0118 972 3114

The Maids
 CLEAN HOMES

PROFESSIONAL DOMESTIC CLEANING
 ESTABLISHED 1986 FULLY INSURED
08450 540 520
 www.themaids.org.uk

THAMES VALLEY ANIMAL WELFARE
 Charity No: 900616
 Has many beautiful and affectionate cats looking for loving homes. If you can give a home to any of them, please call: 01189 721871/01189 722082
 Or visit our website www.tvaw.org.uk



Kathryn Fell Photography
 Weddings, Family portraits, Pets, Events, Product Pack shots, Food.
 Mobile studio can come to you
www.kathrynfellphotography.co.uk
kathrynfellphotography@hotmail.co.uk 07958 371770

Clubs and Societies

Chiltern Edge Horticultural Society

Formed back in 1959, we are a friendly and local gardening club and currently have a membership of around 200. Recently the society undertook the opportunity to donate and plant up window boxes for Peppard War Memorial Hall which are now in full bloom - when you are passing please have a look.

We have newsletters and talks on gardening and related issues; the next talk is on *The Spice of Life - Tropical Flowers, Spices, Tea Plantations and Life in Southern India*, and will be held on 14th October at Peppard War Memorial Hall at 19:30.

There are two shows a year in spring and autumn; the next show is on 6th September 14:30 to 16:30 at Chiltern Edge School. Here you will get the chance to view the vegetables, flowers, cookery, handicrafts, photography and the children's class entered into the competition. Refreshments will include homemade cakes at very reasonable prices; children can also enter a competition on the day and win a prize. There will also be a tombola and a plant stall.

The society have three coach outings a year: the next is on 20th September to RHS Garden at Wisley. CEHS members can also bring along friends for a small additional charge.

We also hold table top sales at the local Village Hall. Look out for the posters in the village.

So if you want to be part of the local gardening community and meet some like-minded people who are able to offer advice and guidance on gardening, come along to a talk, an event or visit us at www.cehs.info/ or contact our Chairman Mark Richards on 0118 972 3939.

Janice Dandridge

Peppard Bowls Club

This spring we ran a very successful recruitment campaign, with 2000 leaflets dropped through local letter boxes, a '30 second shout' interview with Paul Ross on Radio Berkshire, and welcome support from Waitrose in their Green Token scheme. As a result, we have a significant number of new members, with tuition arranged for all newcomers. In addition to playing in club afternoons, many took part, and performed well, in an internal cup competition. Even better, some have already represented the club in friendly games with other clubs. All very rewarding

We need to keep up the good work and a warm welcome always awaits anyone interested in trying their hand at the sport even at this stage of the season (or in readiness for the next). Lawn Bowls was a featured event in the Glasgow Commonwealth Games and received good levels of coverage by the BBC

Interested? Please contact our membership secretary, Jenny on 0118 924 2617

Jennifer Wingrove

Chiltern Players

Chiltern Players are presenting a night of entertainment to celebrate the life of their former chairman and treasurer, Jeni Titchener, who died in April.

An Evening for Jeni takes place on Friday 5th September at 20:00 at Peppard War Memorial Hall, featuring excerpts from plays, comedy turns and monologues from productions in which Jeni was involved from the director's chair, onstage, backstage or front-of-house.

The evening is free to everybody but there will be a collection for the RNLI, Jeni's favourite charity.

Jeni had a long association with Peppard and the surrounding area. She

worked for many years at Johnson Matthey, was a long-standing member of Chiltern Players, Oxfordshire Guides and Brownies, WI, Chiltern Edge Community Association and Peppard War Memorial Hall management committee. For many years, too, she was involved with the Henley Talking Newspaper, recording news stories from the *Henley Standard* for visually-impaired readers. The Players look forward to seeing many of Jeni's friends at this special tribute evening.

For more info: call me on 0118 972 3628 or e-mail carol.evans1976@gmail.com.

Carol Evans

Peppard Lunch Club

This year we will be having our Christmas lunch on 17th December. I am letting you know in plenty of time as in recent years it was first Wednesday in December. Hope all our members can keep that date. To some of our members, hope you'll soon be up and running and we'll see you in September.

Betty Butler

Peppard WI

On 7th June I attended the NFWI Annual General Meeting representing Peppard and several other institutes in the area. At that meeting we passed a resolution, by a large majority, worded 'We call on every WI member to make their wishes regarding organ donation known, and to encourage their families and friends and members of their local communities to do likewise'.

As a result, we are arranging an evening meeting in the War Memorial Hall when a speaker from the NHS Blood and Transplant team will tell us something of their work and discuss with us all the implications of donations at the time of death. These were the issues that arose when we discussed it at our own WI meeting in May. We are inviting everyone in the

ALL THE BASICS
For Your Home



MR FIX-IT—Handyman Services

Call Tony on 0800 025 70 80 (evenings on 0118 972 3004), or text 07794 464273 or e-mail anthonyrgoodchild@btinternet.com for a free quote and call out
www.mrfixit.co.uk

Rebecca Hodson Acupuncture

LicAc MBACc BSc

Traditional acupuncture for your health and well-being

Tel: 01491 628233/07711563117

www.rebeccahodsonacupuncture.com

BACc Member
www.baccp.org.uk



Church Lane, Peppard



CHILTERN ANTIQUES Your Local Antique Dealer

An eclectic mix of small Victorian and Georgian furniture, treen, walking canes, scientific & medical, silver, watches, jewellery, post boxes & lots more.

See us at local and national Antique Fairs

Always Keen to Buy, House Calls by Appointment
Contact Fred Nickson 0118 924 2582 07768 918501

Rotherfield Peppard Educational Trust

Fund for support of educational activities

The Trust supports educational activities undertaken by under twenty-fives from Peppard. It can help with purchase of books, educational visits, special projects, and the like. If you may be eligible, or know of others who may wish to apply, please call:

Sylvia Overbury (01491 628 245)

community to attend and learn more, whether you have considered donating organs or not. We hope you will attend with your children and older grandchildren. We will welcome you with a cup of coffee and promise you it will not be all doom and gloom and we will not be asking for donations on the night! Watch out for posters advertising the event or ring me on 0118 348 0485.

Now don't say WI is all 'Jam and Jerusalem'!

Irene Lindsay, President

Wyfold RDA

Our recent Open Day turned out to be an extremely wet experience with heavy rain falling the whole time but 'the show went on' and, in addition to some good riding demonstrations of mounted games, horseball and dressage to music, the BBQ and stalls raised well over £500. The Deputy Mayor of Henley, Jennie Wood, attended and gave out rosettes as well as drawing the Grand Summer Raffle which raised almost £5000. The last riding demonstration was a musical ride to the theme of *The Jungle Book* and in spite of being so wet the children were still smiling!

Our next fund raising event in the autumn will be called *Buy a Course for a Horse*. More details to follow! Meanwhile, Christmas comes to Wyfold on Saturday 6th December! www.wyfoldrda.org.uk

Adrienne Heriot

Peppard Stoke Row Cricket Club

We are excitedly awaiting the last few games of the season: on the field things are going well, following a clean sweep by all three league XIs, the 1st XI is top of the premier division of the Berkshire Cricket League. The 2nd XI is top of division 2 and the 3rd XI is in 4th place in division 4 and likely to be promoted. The

Sunday Kites have won five of the 12 games played so far and although the Sunday Maharajahs have yet to come out on top in the five fixtures played their enthusiasm cannot be faulted.

The future is promising too. Coaching for the U13s and U11s at The Oratory School has been well attended and we thank the school for the support and use of their facilities. The boys themselves have taken full advantage by taking these skills onto the pitch with the Under 13s winning the Berkshire Youth Cricket League Division 2 (central). The U11s secured the BYCL Division 1 (West) title with another impressive win. Both of these sides are now looking forward to a semi-final match. The Under 9s meanwhile have won eight of the nine games played and tied the other with title contenders Henley, who are also unbeaten. If you have ventured on to Peppard Common on a Sunday morning you will have seen the U7s and U8s showing that the pipeline of talent is pretty full and in good shape.

Having consulted wise sages in Stoke Row, Peppard and Sonning Common, no-one can recall success of this magnitude across so many teams and ages in the clubs over the years. All this in our first season as Peppard Stoke Row CC!

To see more details of the league results then www.peppardstokerow.play-cricket.com is the place to find them.

Ronnie Brock, Chairman

Thank You for the Music

After four decades as the South Chiltern Choral Society's Director of Music, Gwyn Arch MBE has laid down his baton. The choral society began life in 1941 when references to new choral activity in Peppard appeared in the All Saints' parish magazine. An entry in Peppard School's children's scrapbook:

'A Choral Society known as Peppard and District Choral Society, which originated from Peppard WI was formed in 1941.' 'From 1951 the Choral Society has been known as the South Chiltern Choral Society including members from Kidmore End, Sonning Common, Rotherfield Greys and Peppard.' The Choral Society has lost a truly inspiring Director of Music. Our best wishes to Gwyn in his retirement and to his successor, Paul Burke.

Information taken from *South Chiltern Choral Society – The First Fifty Years* by Frances Jones.

Jennifer Smith

Sonning Common Judo and Jujitsu Clubs

We now have spaces for new members, so why not come and try a martial art? It's good for all ages from 5 years old. The first lesson is free. Judo is an Olympic sport and Jujitsu is a combat sport for self defence and fitness.

We run several sessions Wednesday and Thursday evenings: Junior Judo, Junior Jujitsu, Senior Jujitsu and Senior Judo.

We are located at Kidmore End War Memorial Hall at Reades Lane, Sonning Common. Please contact me on 01491 872294 or 07767640215 or email jimlawsonjudo@gmail.com for more details.

Jim Lawson

Yudansha Karate Club

The club has been running for nearly 2½ years. Every Monday we meet at Peppard War Memorial Hall from 15:45-16:45, so if you want to try out a martial art come and give it a go! This year we should be seeing the first of our black belts coming through. The type of karate we do is Shotokan and we work under the Karate Union of Great Britain (KUGB). Two free sessions to start. For more information call me on 07891 511788

Jazz

Computer Problems?

Is your PC misbehaving? Fault Diagnosis, Maintenance & Upgrades, Broadband, Networking, Data Recovery & Migration, Virus Cleaning, and much more.

Phone Robin Piercey at Influential Computers on 01491 680036, or visit www.influentialcomputers.com.



Do you require a PA/Secretary/Administrator?

Experienced Virtual Assistant with a diverse skill set. Locally based, cost effective and flexible.....Call Sue

M: 07870566824 / sue@virtualcatt.co.uk



Everything you need for your pets and wild birds

Food & Accessories

Friendly personal service with lots of parking

Southlea House, Blounts Court Road

Sonning Common

Tel: 0118 924 2747

(Just at the top of Gravel Hill)

Peppard Diary

SEPTEMBER	
Tue 2	Mobile Library/Peppard School/11:45-11:55 Peppard School Term begins
Fri 5	Chiltern Players/ <i>An Evening for Jeni</i> /Mem Hall/20:00
Sat 6	Peppard School TLC Working Party from 10.00 Hort Soc/Autumn Show/CE School/14:30-16:30 Peppard Unplugged/Mem Hall/19:30/01189 723609
Sun 7	Greys Village Fête/Greys Court Circle Dancing/Christ the King/15:30-17:00
Mon 8	SC Business Collab/Butcher's Arms/10:30-12:00 RPPC Meeting/19:30/Planning/21:30/Pavilion
Wed 10	WI/ <i>Corn Dollies</i> /Robert Longstaff/Mem Hall/14:30
Sat 13	Defibrillator Training/Pavilion/09:30
Tue 16	Mobile Library/Peppard School/11:45-11:55
Wed 17	Peppard Lunch Club/Mem Hall/12:00/01491 628644
Sat 20	Greys Ct/Big Harvest/01491 628529 Sue Ryder Sale/10:30:12:30
Sun 21	Greys Ct/Big Harvest/01491 628529
Sat 27	RPPC/Planning/Pavilion/10:00
Tue 30	Mobile Library/Peppard School/11:45-11:55
OCTOBER	
Sat 4	Peppard Unplugged/Mem Hall/19:30/01189 723609
Sun 5	Circle Dancing/Christ the King/15:30-17:00
Wed 8	WI/RNLI/Colin W Brown/Mem Hall/14:30
Sat 11	Sue Ryder Sale/10:30:12:30
Sun 12	Lions' Conker Comp/Crosslanes Fruit Farm 10:00-17:00
Mon 13	RPPC Meeting/19:30/Planning/21:30/Pavilion
Tue 14	Mobile Library/Peppard School/11:45-11:55 Hort Soc/The Spice of Life/Mem Hall/19.30
Wed 15	Peppard Lunch Club/Mem Hall/12:00/01491 628644
Fri 17	Pep Flm Cl/ <i>Glenn Miller Story</i> /Mem Hall/19:00/07747762871
Mon 20	SC Business Collab/Butcher's Arms/10:30-12:00
Thu 23	Peppard School half term starts
Sat 25	RPPC/Planning/Pavilion/10:00
Tue 28	Mobile Library/Peppard School/11:45-11:55
Thu 30	SC Soc/ <i>Lest We Forget</i> /Mike Willoughby/SC Lib/19.30
NOVEMBER	
Sat 1	Sue Ryder Sale/10:30:12:30 Nuffield Place/Italian Job Minis/14.00/01491 641224 Peppard Unplugged/Mem Hall/19:30/01189 723609
Sun 2	Circle Dancing/Christ the King/15:30-17:00
Mon 3	Peppard School half term ends
Mon 10	RPPC Meeting/19:30/Planning/21:30/Pavilion
Tue 11	Mobile Library/Peppard School/11:45-11:55 Hort Soc/ <i>Adventurous Container Gardens</i> /Mem Hall/19:30
Wed 12	WI/ <i>Top Tips for Drivers</i> /Chris Smith/Mem Hall/14:30
Wed 19	Peppard Lunch Club/Mem Hall/12:00/01491 628644
Sat 22	RPPC/Planning/Pavilion/10:00 Sue Ryder Sale/10:30:12:30
Tue 25	Mobile Library/Peppard School/11:45-11:55
Fri 28	Pep Flm Cl/ <i>Made in Dagenham</i> /Mem Hall/0774762871
DECEMBER	
Mon 1	SC Business Collab/Butcher's Arms/10:30-12:00
Sat 6	Wyfold RDA Event/www.wyfoldrda.org.uk Peppard Unplugged/Mem Hall/19:30/01189 723609
Sun 7	Circle Dancing/Christ the King/15:30-17:00
Mon 8	RPPC Meeting/19:30/Planning/21:30/Pavilion Mobile Library/Peppard School/11:45-11:55
Wed 10	WI/Christmas Party/ <i>Carol of the Bells</i> /Mem Hall/14:30
Wed 17	Peppard Lunch Club/Mem Hall/12:00/01491 628644
Thu 18	Peppard School term ends

For FISH shopping/leisure trips: see notice boards, www.fishvolunteercentre.co.uk or 0118 972 3986

SC Library: Friendly Fridays 10.00 Scrabble/Knit & Natter etc

CHURCH SERVICES

Sunday Services at All Saints'	SEPTEMBER				OCTOBER				NOVEMBER					NOTES
	7	14	21	28*	5	12	19	26	2▲	9+	16	23	30	
09.00 Communion	✓	✓	✓	✓	✓	✓	✓	✓	✓	✓	✓	✓	✓	
10.30 Communion (sung)		✓		✓		✓		✓	✓			✓	C	
10.30 Matins	✓				✓					B				
10.30 Family Service			✓				✓				✓			
10.30 Sunday School		✓				✓			✓				✓	
18.30 Evensong	✓	✓	✓	✓	✓	✓	✓	✓	A	✓	✓	✓	✓	

* Harvest Thanksgiving
▲ Patronal Festival: All Saints' Sunday
A Festal Evensong
† Remembrance Sunday
B 10.50 Service of Remembrance
C Benefice Service at All Saints'

Sunday Services at Springwater (Peppard Congregational Church)
Family Service: 10.30 - 11.45 ♦ Sunday School 10.30 - 11.30

Mass at St Michael's Roman Catholic Church
♦ Monday-Friday 09.00 ♦
Saturday 17.30 ♦ Sunday 09.00 & 10.30

THAMES VALLEY FOOTCARE
Foot Care in Your Own Home

Patricia Spender MCFHP MAFHP
0118 984 1132 0773 3320702 pat.spender@gmail.com

Corns Callus Ingrown Nails Verrucas
Athlete's Foot Diabetic Foot Care

Shaun Guard TV AERIAL SERVICES

- Poor Reception Solved - Aerials repaired & supplied
- TVs - Hung on your wall for you. Also supplied & tuned
- Extra TV Points - For aerial and Sky (In HD!)
- Sky TV - Also Foreign Language TV

Call Henley-on Thames 01491 699114
OXFORD AERIALS

TradeMark
Your local installer for 30 Years

for Windows-Doors-Conservatories
Fascia-Soffits-Guttering-Cladding
Call Mike at Sonning Common - 0118 972 4376