

Peppard News

A community newspaper for the parish of Rotherfield Peppard

Postmistress Extraordinaire

Spring 2011

For some people the richness in life is found in travel to foreign parts, but Miss Valerie Clare Faber (17/12/1926-05/10/2010) lived a life of huge value and purpose by staying, not just in the same village all her life, but in the house where she was born.

Hilchoice (named by her mother Hilda) on Stoke Row Road was built by Valerie's great grandfather George Page in 1902. He built the house, comprising living accommodation, the grocer's shop and a Post Office, for his daughter Minnie who had married a grocer. Their only child, Hilda, later took over as Postmistress in 1933 followed by their grandchild, Valerie. Thus the Post Office remained in the same family for three generations from 1902 until it finally closed in March 1997 when Valerie was 70. The path to the shop from the pavement was closed by hedging and just a shadow remains on the brickwork of the house where the entrance to the shop used to be.

In 1915, though not quite 18, Hilda married José Faber, a Belgian soldier who was wounded during the First World War and was convalescing in Peppard. They lived with Hilda's parents; Valerie, their only child, was born in 1926.

As a child, Valerie always had an aptitude for figures and used to help her grandfather in the Post Office after school.

José Faber was a keen photographer and added a photography service to the business. However, work was scarce and José returned to Belgium in search of work.

He died there when Valerie was six years old and little is known of his side of the family.

Upon leaving school Valerie remained at home working in the Post Office and shop alongside her mother, and eventually took over the title of Postmistress on her mother's death. In her younger days Valerie delivered telegrams on her bicycle and had an extensive knowledge of



Valerie with her beloved dogs

the area. This stood her in good stead when delivery drivers came to her for reliable directions. In 1977 Valerie and her mother were involved in a serious car accident. Valerie sustained several injuries and was left with a limp for the remainder of her life. Despite this, she continued to enjoy driving and undertook some long journeys during her precious time off when the shop was closed. Valerie shared an interest in dogs with

Audrey, a relative who showed her dogs at Crufts; they would attend the shows together. Valerie always had dogs of her own, first Japanese Chins and later Pomeranians.

Valerie's meticulous attention to keeping the Post Office books and ordering stock was legendary. This stock included, of course, sweets for the children. These were in the old fashioned big glass jars and trays of 'penny sweets'. She had endless patience with the children as they deliberated over spending their pocket money on a few pennies worth of sweets. She was equally patient and respectful towards the patients from Borough Court Hospital who came to shop there. It was a real meeting place for the village; a great loss to the village when it finally closed down.

Valerie's gentle, calm manner belied a great strength of character. In 1992 an armed robber held her at gunpoint demanding the contents of the till. Valerie calmly told him, 'Don't be so ridiculous!' and activated the alarm; the man fled!

A highlight of her life was attending a Buckingham Palace Garden Party where she went with Sheila Lovegrove, her loyal friend of many years. A party was held for her on the Common to mark her retirement. Valerie was always a much respected and highly valued member of our community.

I am indebted to everyone who provided me with written and verbal information which enabled me to put together this tribute. - Sue Nickson

Editorial

I just wish we could turn our backs on everything that we dislike, particularly things that attack community life. A major issue over the winter has been the threat to our library. As I write the final outcome is still unclear, but hopefully a sensible, workable solution will be found that prevents us losing this essential facility.

In May you will be asked to complete a questionnaire, following the resurrection of the Parish Community Plan. If you have an interest in the way in which our community develops, as I am sure you do,

I would urge you to complete and return the survey. Your voice should be heard!

On a lighter note, we have the Royal Wedding at the end of April and I understand that plans are afoot for a celebration street party. This should be a memorable event, so make sure you join in and add to the community spirit!

Finally, Peppard News strives to provide you with items of local news and interest. We are always pleased to receive constructive feedback, so feel free to contact us.

Tony Treglown, Editor

Peppard News is a community newspaper published by Rotherfield Peppard PCC with financial support from Peppard Parish Council, and is distributed free to almost all households in the ecclesiastical and civil parishes of Peppard. Views expressed are not necessarily those of the PCC or RPPC unless stated as such.

Peppard News is also available by e-mail.

Issues: March, June, September & December

Editor: Tony Treglown,
87 Shiplake Bottom, Peppard Common, RG9 5HJ.
e-mail: PeppardNews@aol.com

www.PeppardNews.co.uk

Contributions accepted via e-mail or post to Penny Harvey, 12 Shiplake Bottom, Peppard, RG9 5HL

Advertising: Ian Fraser - phone: 01491 629631

Printed by Trinity Creative Resources
Earley RG6 7RH

Our Schools

Peppard School

After a year with our new Head Teacher, Tina Nowell, at the helm our goal of becoming an 'outstanding' school is progressing well. Our KS2 results were some of the best in country with all children making significantly better progress than children nationally. Tina believes in learning which focuses on individual children's needs, making them feel valued and helping them to do their very best.

Our Years 3 and 4 children recently took part in an athletics competition attended by seven schools from Henley and the surrounding area. We came fourth, a fantastic result (for a school of Peppard's size) which made the children who took part, their parents and teachers very proud. We were very proud, as always, of the excellent sportsmanship shown by our children.

Years 4, 5 & 6 children are looking forward to their 'Dragons' Den' project, which starts with a visit to Cotswold Fayre in March. Cotswold Fayre, based in Peppard Common, is a gourmet food supplier to over 1,200 fine food retailers, farm shops and delicatessens. The children will place an order with the food supplier and then have the opportunity to follow the process of that order through to fulfilment. Following this, they will investigate and source a new product, which hopefully will be attractive enough for Cotswold Fayre to add to their product line!

In addition, Years 3 & 4 children will be taking part in a football tournament and Years 5 & 6 will be taking part in a Tag Rugby Tournament at Gillotts School.

Pupils at Peppard look set to having a bumper year of involvement in the Henley Youth Festival (HYF) - keep an eye on the website www.hyf.org.uk to see where you can go to support them. They are taking part in the whole range of workshops and

Peppard C of E Primary School

Peppard Common RG9 5JU
Phone: 01491 628354
Headteacher - **Tina Nowell**
Chairman of the Governors
David Sell

shows that HYF is offering. The Foundation and Key stage 1 children will be going to see Blunderbus Theatres production of *The Dragon's Daughter* at the Kenton Theatre, Year 3 will be having a 'Fantasy and Fairy-tale' storytelling session and the whole of Key Stage 2 will be going to Chaconne Brass's interactive workshop about the history of brass instruments. Years 5 and 6 will be watching and participating in *The Tempest* performed by the Young Shakespeare Company and finally Year 4 will be entering the Explorer Dome to go inside the human body.

This year's HYF theme 'Fantasy and Fairy-tale' is inspiring the children who are already thinking of ideas, both solo and in groups, to enter the song, dance and entertainer evenings held at the Kenton during the week of the Festival. Budding chefs are concocting recipes for the Masterchef competition, young directors are coming up with film ideas, artists are experimenting with different ideas for the Art Competition and young writers are creating their own modern fairy tales.

Tina Blumfield

FOPS

Our Friends of Peppard School (FOPS) committee have been busy planning exciting fund raising events for the year ahead, which kicked off with the children's Valentine's Disco on

17th February. Other planned events include a Race Night, Treasure Hunt and our Sports Day and BBQ. The Quiz Night, at Peppard War Memorial Hall, will also be held again this year. This has been a very popular event attended by many members of the local community whose company (and intelligence!) we really appreciate.

We currently have spaces in several of our year groups and would be delighted to show you around. Please call 01491 628354 to make an appointment.

The Parent Governors

Peppard Parent, Toddler and Baby Group

We are a friendly playgroup, run by Mums. We meet once a week on Tuesday Mornings from 09.45 - 11.45 during term time, including half term, at Peppard War Memorial Hall. We have lots of toys, a baby corner, craft table, snack time (for children and adults), story and songtime.

Our Christmas party was a great success; the children did a fabulous job making Christmas cards and tree decorations at craft, enjoyed music and play under the parachute and Christmas tree biscuits at snack time. The morning finished with



Children enjoying the annual Easter Egg hunt

ALL THE BASICS
For Your Home

MR FIX-IT

Call Tony now on 07794 464273 or evenings on 0118 972 3004
or e-mail misterfixit@tiscali.co.uk
For a free quote and call out
www.diyosrecoveryinthamesvalley.co.uk



COMPASS ELECTRICAL

All domestic/commercial
Internal & external
ELECSA registered & approved
Local & reliable
Please call for a free quotation

0118 972 3972/07737 413314

HOBBS OF HENLEY LTD THE BOAT PEOPLE

at HENLEY-on-THAMES

DAY BOAT HIRE - PASSENGER BOAT AND PARTY HIRE
Repairs, Fuels & Service
BOAT & ENGINE SALES

Established over 130 years - Telephone (sales) 01491 572 035

WEE-COT SEATING

*Upholstery, Loose Covers, Replacement Cushions,
Chair Caning, French Polishing and Furniture Repairs*
LIZANNE SMITH Tel/fax 0118 972 4560

Our Young Achievers

Christmas songs and the children were very excited that Santa had left presents for them all to take home.

The last session of the Spring term will feature our annual Easter Egg Hunt on Tuesday 5th April; outdoors, weather permitting. Please come along to the group prior to the 5th or telephone for more details. Summer term starts Tuesday 26th April

We welcome new members to the group, for more information contact Caroline Jones on 0118 9723 547, Emma Toward on 0118 9722068 or just come along!

The Rainbow Children's Centre

It is very exciting to see that the building for the Children's Centre at Chiltern Edge is almost complete and hopes to be open for children and families from late March/early April, with an official celebration to open the building potentially in May (date to be confirmed).

Current services in Sonning Common include a music group, rhyme time at the library and one-to-one family support. If you have any questions/queries about the Rainbow Children's Centre and its services for 0-5 year olds and their families please do not hesitate to contact the team on 01491 577414 (option 1) or e-mail fran@nomadhenley.co.uk

Fran Bunkell

Sonning Common Pre-School

For a building that nearly-never-was, Sonning Common's new Pre-school is something of a triumph for our community. There were months of meticulous planning, the drama and dismay of the building grant being suspended, the fight to get

it reinstated, the joy of winning it back and the relief at seeing the construction work finally get underway. Now the building is almost ready to move into and the children are getting really excited.

The staff and parents involved in the project want to say a huge 'Thank You' to all the local people, businesses and organisations which have given their support.

The Pre-school is now around £3,000 away from its final fundraising target of £12,000. This money is needed for furniture and equipment for the new building and for landscaping the garden.

If the fundraising events planned over the next few months are successful, Sonning Common will have an affordable pre-school to be truly proud of. The building is completely child-centred and designed to provide a light, bright and secure environment in which children can play and learn, in preparation for their school years. The doors of the new building will open to the children at the beginning of the summer term.

Nikki Hampton

Sonning Common Baby & Toddler Group is Moving!

Following the opening of the new Sonning Common Children's Centre, the Group has been invited to move to the new custom-built facilities based at Chiltern Edge School, Reades Lane. These include a family room, baby area, messy play area, kitchen, outdoor play area and more! The Group will still meet every Wednesday at 09.30 - 11.30 with the same fun activities - including craft, snack time, and singing. See you there after the Easter Holiday, from 27th April.

Liz Nickels

A Local Sporting Talent

Our local Table Tennis Club is fortunate to have 12 year-old Jonathan Abbott amongst its aspiring junior members. After only a couple of years at the sport, Jonathan is the Oxfordshire Under-13's Champion and South of England Runner-up. In 2010, when he was in the Under-11 division, he was ranked 11th in England, no mean achievement.

Following his recent successes in the Regional competitions, Jonathan will go to the National Finals in Doncaster in April.



We wish him luck.

Jonathan became serious about table tennis following encouragement from the late Malcolm Griffiths, well known locally for encouraging youngsters to take up the sport. Jonathan is quick to praise the help he has received from senior members of his club and

expert coaching he receives from a former British Olympic player.

Table tennis is not Jonathan's only sporting interest. A member of Kidmore End Cricket Club, he represents Reading District and attends County training. He has skied since he was three, plays Rugby and soccer and when I met him he had just played his first game of badminton!

I wonder which of these sports Jonathan will settle for in the end? At the moment it is anyone's guess but we will watch his progress with interest.

Tony Treglown

Do you need an Accountant?

- Self assessment
- VAT
- Corporation tax returns
- Accounts
- Companies House returns
- Business advice

Phone Keith Jefferies ACMA

on 0118-9722611 or 07749-415264
for a free initial consultation

CHIROPODY HOME VISITING SERVICE

For enquiries & appointments call

Heidi Snookes-Owen

B.Sc., D.Pod.M., M.Ch.S., S.R.Ch.
HPC REGISTERED

0118 9242677

GRAHAM'S MAINTENANCE



Painting, decorating

Plumbing & fitted bathrooms

Floor & wall tiling

Fascias, soffits

Guttering, flat roofing

Door & window fitting

Wood & laminate flooring

Sheds—Supplied & fitted

Garden Maintenance

Fencing & decking, etc.

Free estimates
0118 972 3114

The Councils

Parish Council News

The spring has brought many questions about our future in the light of our potentially shrinking budget and the emerging possibilities of the 'Big Society'. The future is for volunteers and participation. In the immediate future we are planning to launch the questionnaire for our Peppard Community Plan. Guess what, we badly need volunteers to help us to distribute the questionnaires and to encourage everyone over the age of ten years to express their needs, preferences and opinions. We all know from our own experience that only one thing never changes and that is 'change' itself. The question is: in what direction? Hence the importance of obtaining your views, so please consider joining the team and take this opportunity seriously. A strong mandate should lead to an acceptable plan and future. The timetable currently indicates that we need to distribute the questionnaire in early May.

Sonning Common and its facilities continue to be important to 'Peppardians'. In particular, the future of the Sonning Common Library is valuable to many of us. Members of both councils are considering ways and means of securing its future. The protest will continue in parallel with similar actions throughout the country. Whatever compromise is hopefully reached, local volunteers will undoubtedly be needed to preserve and improve what we have.

The formation of a committee to run the Sports Pavilion and Field is long overdue. The Council, as a body, is the sole trustee of this charity and so far has been charged with the sole management of both the Field and Pavilion. We now know, however, thanks to recent legislation that the RPPC can share its responsibilities, so here again please may I appeal for volunteers.

I must end with a vote of thanks to all the councillors and others, who have worked so hard over the past few months on Carlings Orchard, planning applications and the legion of small jobs that crop up. Finally, we pay tribute to Barbara Marston, who left us at the end of February. She served Peppard as Parish Clerk and Responsible Finance Officer for the past thirteen years. Barbara will be sadly

Parish Council

Chairman: Nick Launders
01491 628243

Parish Clerk: Helen Lewis
0118 924 2619

Website: www.rppc.org.uk

SODC Councillors: Paul Harrison
0118 972 2665

& Alan Rooke—01491 572919

OCC Councillor: Carol Viney
01491 680887

Rotherfield Peppard Parish Council usually meets on 2nd Monday of the month at 19.30 in the Pavilion, though there is no meeting in August. Parishioners may attend and observe, and may raise briefly issues of concern to them. All may attend intermediate planning meetings as well - see Diary for dates and times.

missed and a difficult act to follow. Please join us in wishing her well in her future career.

Please come to the Annual Parish Meeting on Saturday, 16th April, 10.00 at Peppard War Memorial Hall - refreshments will be available before the meeting. Your presence will make it a worthwhile meeting. If you would like to be a Parish Councillor please contact me asap.

Nick Launders, 01491 628243
e-mail: launders@launders.net

District Councillor's Report

Though not a District Council matter, but vital to our community, is the importance of our local Library. As the son of an ex-Librarian whose mother used to work at the Bodleian in Oxford, I can see the importance of the library service. Without books we cannot learn from those who came before us. Even in the decade of the Internet, books have an important part to play in teaching us about the past. We all used libraries when we were in education, but now the next generation may never have that opportunity. What a loss to their education and to our society as a whole.

When every council in the country is having to restrict and carefully manage their budgets I report on some of our achievements.

We have:

- Reduced management and staffing costs by about £500,000 through shared working with the Vale.
- Delivered fit for the future savings of £1.3 million, through working more efficiently.
- Frozen Council Tax for second year running as a result of shared management savings and savings delivered through more efficient working, specifically the joint waste service.
- Slashed sundry debtor arrears by 65%, from £700,000 to less than £250,000.
- Processed benefit claims in an average of 16.5 days, below our target of 20 days. Much of the credit for this goes to Capita who are now performing much better than previously.
- Achieved staff sickness levels below the private sector at just 2.81 average days per full time employee in December. The target for the year is 4.88 so we are well below this.
- Re-launched our website so it's much more focused towards customers' needs and promotes online services

For a full summary of our year's achievements and future projects please see www.PeppardNews.co.uk

Paul Harrison

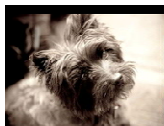
Activities for Young People

Oxfordshire County Council, plus district councils, has a website which gives details of activities available in the county. It lists a wide range of activities from sport to arts and volunteering to youth clubs, including advice on how to get there using public transport.

For information go to www.activitiesoxfordshire.info

Oxfordshire Travel Advice Line

A free journey planning and advice service (OxTAIL) has been launched for older people and those with a higher level of support needs. The service is available on 01865 323738 or e-mail ox-tail@oxfordshire.gov.uk



Sonning Common Pet Care

Dog Walking, Boarding, Puppy Visits
Home Visits for Cats, Rabbits
& Other Small Animals

Contact Alison Cartwright
Tel 0118 9722948
07787 114536

54 Woodlands Rd
Sonning Common
RG4 9TE



Grounds Maintenance, Grass Cutting, Hedge & Tree Work

Country Estates, Private Homes, Local Businesses
Local References

01491 826925 **07977 237798**

Know Your Councillor

Nick Launders

Nick Launders is one of those lucky, lucky people who decided his future career whilst at school and then went on to love every minute of it. He is an army man to his very core – even his casual clothes are army green! His childhood dream was to follow his late father into the RAF but, at school, he discovered it was the army that was to be his destiny when he was given the opportunity to lead a group of eight children at an army cadet camp in the Brecon Beacons.

He retired in 1995 having stayed in the army for 33 years; during this time he was in the Royal Artillery and did tours of duty in many countries and lived in a total of eighteen different homes. Nick ended his military career as a Lieutenant Colonel although he rarely uses the title now. After leaving the army, he joined the Ministry of Defence in various roles.

Once retired from the army, Nick was able to spend more time on other interests and activities. He became very involved in Greyfriars Church in Reading where he and his wife, Sue, were married; especially in 'Tuesday Special', a weekly event sponsored by Causeway Prospects for the mentally handicapped. Sue and Nick are also drawn into the ministry of All Saints' Church here in Peppard.

With such strong links to the army, it is no surprise that Nick is very active for the British Legion and takes on casework to help and assist veterans. Part of his British Legion involvement is as the local organiser for the Poppy Appeal. He is President for the Royal Artillery Association for the Wycombe District as well as supporting the Help for Heroes campaign. Nick and Sue have lived in Peppard since 1993 and have always taken an active interest in the village. He was recruited onto the Parish Council by Valerie Phelps in 2006 and had to fight an election. Coun-

cillors must fund their own election campaigns although there is an upper limit of £200.

The average tenure of a councillor is approximately five years and it came about that several councillors stood down during the first few years that Nick was a councillor. Thus he describes his becoming Chairman of the Parish Council in 2009 as almost by default.

He sees the value of the Parish Council as listening to the community, to experts and advisors, and then presenting arguments and influencing SODC, OCC, our MP and also local businesses. He dedicates time to council work most days for which, as an elected member, he receives an allowance of £300 per year. He could claim out of pocket expenses, e.g. for travel, but chooses not to.

He is a devoted family man. As the son of a military man and son-in-law of a medical consultant, it was almost inevitable that his four children have chosen military or medical fields. A source of anxiety is that two of his children have served in Afghanistan and his youngest, Edwyn, is soon to return. Balanced against this was his pride when his oldest, Jason, a medical physicist, appeared on the front page of the New York Times.

His greatest joy in life is having large family gatherings with all his children and wider family present. Indeed his last family holiday was in a ski chalet in the French Alps where most of the family enjoyed skiing while he took the time to indulge his passion for geodesy - the scientific discipline that deals with the measurement and representation of the earth, including its gravitational field, in time and space.

With typical humility, Nick describes himself as a very boring man. This humility is actually part of his charm.

Rita Hadgkiss

Snippets

Lew Burling

It is with sadness that we announce the death of Lew Burling. He moved to Kingwood Common when he married in 1938, and died just before Christmas at the age of 93.

Lew was a familiar figure in Kingwood for 72 years. Right up until the end of his life he walked down to the Unicorn for a pint of beer around three times a week. His greatest love was walking in the area and he eschewed holidays in favour of this pastime. For many years Lew cycled and the spectre of his bike in the middle of the road alarmed many people especially with the ever-increasing amount of traffic.

He was a true Christian Gentleman and our sympathies go to his daughter, Fran, and her siblings.

Do You Enjoy Your Garden?

Then you might like to consider joining the Chiltern Edge Horticultural Society which meets at Chiltern Edge School, Sonning Common. To find out more phone Chairman Mark Richards 01189 723939, or Membership Secretary Sue Hedges, 01189 723678 or visit www.chilternedgehorticulturalsociety.btck.co.uk

Sonning Common Young Authors' Competition

This is an exciting opportunity for youngsters aged 11 to 16 to enter this competition and win prizes. It is open to those who go to school locally or belong to a local club or youth organisation in the Sonning Common area. Registration from 1st May; submissions by 1st October.

For further information visit www.sonningcommonparish.co.uk/writing

Traditional country pub, good beer,
great food, children's play area.

Where?

THE RED LION
Peppard Common
01491 628329



Shoe Repairs Dry Cleaning Alterations
Haberdashery Knitting Yarns

Occasions

23c Wood Lane, Sonning Common
0118 972 3358/4890

Gardiner's

Established 1968

The Employment Business for Nurses and Healthcare Assistants



For over 38 years we have successfully provided
nurses and carers to clients at home.

Please contact us for more information
about our services.

(0118) 947 6666

10 Church Street, Caversham, READING RG4 8JZ
www.gardinersnursing.co.uk

Our Village

My First Year at Greys Court

I approached Greys Court on a cloudy Easter Sunday with excitement and trepidation. Ever since being given the wonderful news that I had gained the position of Property Operations Manager, both myself and my husband Gerry, (whose unwavering support made this possible) had been looking forward to this day with eager anticipation. Now it was finally upon us, what would the future hold?

As it turned out the day was a mixture of chaos, enthusiasm and promise. There were more cars and visitors than I had ever imagined. Families enjoying the woodland walks, couples walking hand in hand through the early spring garden and not so orderly queues at the famous Tea-room. I knew then that it was my time to call this home and do whatever I could to support and nurture this amazing place.

I was greeted warmly, with relief and broad smiles. The small number of staff had done a wonderful job in getting the house and gardens ready for the new season, ably supported by a small army of volunteers. The house re-opened for the first time, after several years of extensive refurbishing. How many visitors would come to see this hidden gem? Nobody could be sure and nobody could have known then what the season had in store.

During the following weeks and months, the property team and volunteers worked tirelessly to improve the facilities and enhance the visitor experience. Laura Weatherall, our House Steward, is always looking for new and innovative ways to present the house: cross stitch quotations on cushions, history tasters on ceramics, wobble trails, jam making, baking and lace and embroidery making, to name but a few. Jeanette Creewel, our Catering Manager, and her many assistants have done a sterling job of making sure every visitor had the opportunity of sampling delicious lunches and sumptuous cakes in our Cromwellian building; the garden team doing everything from bee-keeping to garden tours, enriching the environment in the garden at every turn. As the landscape changed from the violet extravaganza of the bluebell woods, the majesty of our famous wisteria, affectionately called 'the beast', the profusion of peonies, sweet scents of the old roses, clematis flowers the size of your hand, followed by the explosive colours of the kitchen garden and orchard fruits, I truly believed I had found 'a little piece of heaven'.

Six months on, with over two dozen events behind us, including a sell out sea-

son of outdoor theatre, evening walks, an intimate out of hours tour of the house, a wedding and a birth, it was time to close the gates for the last time, bid the last of our 85,000 visitors a fond farewell and take a deep breath at the end of what had been a record breaking, phenomenally successful season. What will the future hold? Well, for me, hopefully the promise of many more years in this truly magical place and for Greys Court, a future filled with admiration and affection from all who visit.

Jane Greenhaf, 01491628529
Property Operations Manager

Peppard War Memorial Hall

The Hall Committee is pleased to welcome Philip Collings as the new Chairman and Clive Mills as the representative from the Parish Council.

The Hall will be unavailable during the week commencing 14th March as Messrs Brackenwood will be installing double glazed windows and new vandal-proof doors. The old ones are most probably the originals installed in 1926 and so they haven't done at all badly, but the time has come...

The District Council would not allocate a grant for this work so the trustees have looked long and hard at the hall funds. With some very welcome grants from The Bernard Sunley Fund, Doris Field, Chiltern Edge Community Association, the Oxfordshire Community Fund and our own fund raising activities, the Trustees have decided it is possible to cover the cost of the renovations. This will make the cash position very tight but by proceeding cautiously we can go ahead with much needed improvements.

We are also looking at a new allocation of money from the Lottery and Peppard Parish Council have been approached for help as well. So by Easter it is hoped that the hall will be looking spick and span on the outside. The next hurdle is redecorating the interior – but more of that anon.

In order to come into the 21st Century, the website will be revamped with a new

approach to making bookings easier to administer. The trustees hope this will make the hall even more attractive to hirers. There are still slots in the daytime for anyone wanting to start an activity. Just contact Maggie Brakspear on 0118 972 4751

FISH Volunteer Centre

In case you are new to the village or just don't know what FISH is, FISH has been around for thirty years helping local people to get out and about for necessities like doctors' appointments, hospital visits and shopping but also for pleasure to pub lunches and outings far and wide.

Yes, our clients are mostly senior citizens but some are not so senior. Equally our volunteers are mostly senior but we love it when we get a not-so-senior volunteer who puts us on our toes and helps us with things like Facebook and Twitter.

Today we have just under 60 volunteers without whom we couldn't exist. Some drive the mini-bus, some work in the office, some drive their own cars, some sit on our committee, but most do more than one of these things. Sadly we often have trouble finding drivers to take our clients to the Royal Berks or Oxford hospitals as it can often take a full half day and parking is a perennial problem.

We have two ladies who bring clients from Binfield Heath to the Health Centre every Friday morning and we have one lady who will go on trips as an escort when we have clients who need that little bit of extra assistance. All these roles are invaluable to us and all give their time to help their fellow citizens because they want to give something to society; by doing so they get something back and get to know an awful lot of people as well!

We are always looking for new volunteers so if you want to have a go, give us a call on 0118 972 3986 or drop into the office – we have enough bus drivers at the moment but we need more volunteers for all the other roles. If you don't fancy volunteering and are close to senior citizenship, why not have a look at our bus programme for the next month? It is always on display at the village hall weekday

This page sponsored by

TANDOORI
Connoisseur

An Emporium of Indian Cuisine

Fully Air-conditioned
Open 7 days a week, including bank holidays
Take-away menu - prompt service

21 Wood Lane, Sonning Common - Phone: 0118 972 3104/1054

mornings when our office is open and when it is shut, it is on the office window and always at www.fishvolunteercentre.co.uk.

Phil Clark, Chairman

Our Library is at Risk

Oxfordshire County Council recently announced that, because of budget constraints, it is their intention to withdraw funding from 20 of the county's 43 libraries, including ours.

In effect, this plan would mean closure later this year, unless provision can be made for individual libraries to be self-funded, with one option being for the library to be run by unpaid volunteers.

Residents of Peppard, Sonning Common and the surrounding villages have been vociferous in their support of the 'Save Our Library' campaign, organised by the Friends of Sonning Common Library. This campaign has gained momentum ever since OCC announced that our library was one of the 20 targeted.

Several hundred people, including many children, demonstrated outside the library. This was followed by much heated debate at a packed meeting in the Village Hall. A three month consultation process will be taking place this spring, with various options being considered including that of the library being community run.

Recently news came through of a £1.7million council windfall, which produced the headline 'Reprieve Hope for Libraries'. However, this may be a false dawn as this windfall would need to be spread over a large number of areas of activity.

A final decision regarding library funding/closures will be made after the consultation period, i.e. after the end of May and possibly not until June or July. Any libraries which do have to close would then cease operation by the end of the year.

Ian Fraser

Commons News

The two-day Public Inquiry to consider the application to erect a fence on part of Kingwood Common to permit seasonal grazing will be commencing on 19th April

at Nettlebed Community School. As highlighted previously, whilst over 70 letters of objection were received; there were over 40 letters of support – importantly from separate households. The inspector's decision is absolute.

To help those with concerns about this proposal, the Conservators have arranged a visit to Pamber Forest, near Tadley, where seasonal grazing has been successfully introduced. The visit will take place on Wednesday 16th March. For those interested in attending, please contact the Clerk to the Conservators on 01491 641199, or visit www.nettlebed-commons.org (Contact us). Final details will be issued to those wishing to attend.

Nigel Wooding

Getting Up a Good Head of Steam

Members of the Peppard Flat Earth Society (PFES) will be playing host to 75 intrepid motorists taking part in the *Flying Scotsman*, a Classic Reliability Trial for vintage cars from London to Edinburgh. Planned by PFES member, Alan Smith, they will be taking the most challenging and scenic route over three days and stopping overnight at Crewe and Carlisle. Competitors are coming from 12 different countries in their wonderful old cars representing 25 different manufacturers, latest count – vintage Bentley 12, Lagonda, Alvis and Aston Martin 6.

Come and admire the cars, and their owners in period attire, as they arrive at their first check point after Brooklands outside the Red Lion, Peppard Common, on Friday April 1st from 11.00. Log on to www.endurorally.com for more details.

Alan Smith

On Your Bike

The 5th annual On your Bike family charity bike ride will take place on Sunday 3rd April. It will start at Sonning Common Primary School at 10.30.

We are hoping to receive 1,000 applications this year. Registration and full in-

formation is now available on line at www.onyourbikesonningcommon.co.uk.

Those who register before 24th March will be entered in a prize draw.

The event has something for everyone including a 'buggy friendly' health walk, a supervised playground cycle ride and marshalled cycle routes of various lengths.

Once again 100% of participants' entry fees will be donated to Sue Ryder Nettlebed Hospice and to local schools.

Since On Your Bike began it has raised over £10,000 for charity. Last year 658 people took part and raised £3,700. You can do better this year!

Greenshoots

On Saturday, 21st May, from 10.00-16.00 Greenshoots will hold its second Open Day. We will serve refreshments, homemade cakes and cream teas from our newly refurbished barn and have summer bedding, plants and garden related products for sale. Please come to support your local gardening nursery charity and see how much gardening is changing the lives of people who live with disability.

Angela Fordham



Health Walks

Want to get fitter for the summer? Come and join our group of walkers, and exercise in the countryside. Sonning Common Health Walks organise 10 walks a week – which are free!

Walks are graded by distance, terrain and stiles to help *you* judge which walks are suitable for your fitness level. We have two trained leaders on every walk, one to accompany the faster walkers and the other to bring up the rear with the slowest walker. The new timetable starts on Tuesday 26th April.

For details of the walks, and the new timetable, take a look at our web site, at www.sonningcommonhealthwalks.co.uk, printed copies can also be obtained from the Health Centre, the Library or the Herb Farm. If you would like more information please contact me on 0118 9242515.

Chris Brook

<p>Make a bee line to BRAMBLES for Fresh Flowers, Bouquets, Plants and more 0118 9721240</p>	 	<p>Wedding flowers Funeral tributes Opposite village hall car park exit 42 Wood Lane Sonning Common</p>
--	---	---

Our Churches

All Saints' Church of England

www.allsaintspeppard.org.uk

Rector: Revd Canon Graham Foulis Brown 0118 9723987
Asst. Priest: Revd Barry Olsen 0118 924 2812
Churchwardens: Adrienne Heriot 01491 629254
Toby Greenwood 0118 972 2861

From All Saints'

One of the many good things about living in Peppard is being close to Oxford and its magnificent Christ Church Cathedral, incorporating parts of the 12th C Augustinian Priory of St Frideswide. Most recently I was sitting underneath the superb vaulting for the installation of our Rector as an Honorary Canon of the Cathedral. It being dark, I could not see my favourite features of the cathedral, the many stained-glass windows by Burne-Jones. An early Burne-Jones above the Shrine of St Frideswide recounts her life in 18 scenes – her upbringing by St Catherine and St Cecilia, her abduction by a king, her flight to Abingdon where she hid in a pigsty, and her return to her convent in Oxford. The mischievous Burne-Jones put in her cell a modern flush WC! Also above the Shrine is a curious wooden watching loft. There is so much to see and the building has so many associations. Alice (in Wonderland) worshipped here when her father was Dean, and her sister Edith is St Catherine in a window commemorating her.

This is all to urge you to visit your cathedral. It is at a disadvantage in being hidden away in a university college. The good news is that any member of the Diocese of Oxford can obtain a pass which gives you free entry. If you want a pass do contact me for an application form.

Barry Olsen

Changes and Updates

Some new hymn books are about to come into use. *Sing Praise* is a recent publication by SCM Canterbury Press and the Royal School of Church Music. It is de-

signed to complement our existing *Hymns Ancient and Modern*. Many of the words are new but several well known tunes are used along with titles such as *Checkendon* and *Aston Rowant*.

A variation to the wording of the Sung Eucharist used on the second Sunday of each month is being introduced. The contemporary language service will be accompanied by new music as the old music does not fit the new words. The *Thorne* setting had its first airing on 12th February and was well received as it proved to be very singable.

An Honorary Canon

Congregations were delighted by the news that the Rector Graham Foulis Brown had been made an Honorary Canon of Christ Church Cathedral, Oxford. Many supporters made the journey to Oxford for the installation which took place during Evensong at the Cathedral on 22nd January.

The appointment is in recognition of nearly 30 years service in the Diocese. Graham is now sporting a striking new cassock with red buttons and piping to go with his official title of the Revd Canon Graham Foulis Brown.

Mothering Sunday

Mothering Sunday will be celebrated this year on Sunday, 3rd April. Instead of the usual Morning Prayer that day the service will be the slightly more informal Peppard Praise. As usual the children will be taking part, supported by the adult choir and it should be a very enjoyable service.

Anniversaries

Two events being celebrated this year are the 150th anniversary of *Hymns Ancient and Modern* that will be marked at the service of Morning Prayer on Sunday, 10th April and the 400th anniversary of the King James version of the Bible that will be marked at Evensong on Sunday, 15th May.

Adrienne Heriot

Concert

An enjoyable evening is in store for Saturday, 14th May, when Marion Olsen (mezzo) with Nigel Foster (piano) will be performing a wonderful programme of songs by Brahms, Schumann, Montsalvatge, and Gershwin, entitled *Of Life and Love*. The concert will commence at 19.30 and will be followed by refreshments in the Parish Room. There will be a retiring collection for Christian Aid.

Christian Aid

As an agency of churches in Britain and Ireland, Christian Aid is mandated to work on relief, development and advocacy for poverty eradication. Each year for the past decade, an average of 258 million people have lived through some kind of disaster - storms, floods, famine, cyclones, drought, typhoons, earthquakes, mudslides, avalanches. In total, this is the equivalent of almost half of the world's population. Christian Aid is always quick to respond to disasters, working with partner agencies to bring relief and ongoing aid to stricken areas. For more information, see www.christianaid.org.uk.

This year, the house-to-house collection in support of Christian Aid will take place during the week of 15th to 21st May. Please be generous when the red envelope drops through your door; your donation really will make a difference.

Ian and Pat Fraser

PEMBROKE GLASS

UNIT 12, MANOR FARM, PEPPARD COMMON, RG9 5LA
YOUR LOCAL GLASS AND GLAZING COMPANY
CALL FOR ADVICE & FREE QUOTATION

We also supply & install or supply only all types of windows, doors and conservatories in UPVC, hardwood, aluminium, etc.
Tel: 01491 629901 Fax: 01491 629904

BONDRIGHT ROOFING SERVICES

DOMESTIC, COMMERCIAL & INDUSTRIAL ROOFING
& EXTERIOR MAINTENANCE

Your Local Roofing Company

TEL: 01491 579659

www.bondrightroofing.co.uk



A.B. WALKER

& SON LIMITED

FUNERAL DIRECTORS. EST.1826

Independent 5th Generation Family Run
Funeral Directors and Monumental Masons

- 24 Hour assistance from 4 offices with parking
- Competitively priced modern and traditional options
- Pre-paid funeral plans & funeral flowers on-line
- Stone memorials & Grave tending service

Henley-on-Thames 01491 413434
Reading 0118 957 3650

www.abwalker.co.uk



St Michael's Catholic Church

Rev'd Robert Devaney 0118 972 3418
 Rev'd Francis Andrews 0118 972 2354
 e-mail: stmichaels.rc@hotmail.co.uk

Broken Promises

Well, here we are, entering into spring-time whilst the memories of Christmas and New Year fade into the background. But, these memories might give some of us cause for concern when we look back at the resolutions we made. A few months on and what has become of our promise to change our lifestyle or resolve to be healthier in our dietary habits? As so often happens, we inevitably find our resolution has fallen at the 'first hurdle'. We just couldn't keep it up. So, how do we react? Maybe we feel dejected; ashamed of our weakness and wondering how we can ever

improve or be true to ourselves. After all, it's only human to be demoralised by our failures.

However, if we consider what it is to be truly human then we really will see light through the darkness. All of us have no doubt heard the expression: 'to err is human'. There's more than just an element of truth here. We know that Christian Faith, if taken seriously, demands a total commitment of our lives. Unfortunately, it's often been thought wrongly that this involves achieving a state of holiness or perfection by our own means; that true Christian spirituality involves perfection. In fact, being Christian is living with the reality of the here and now, or living with imperfection. This sounds very odd to those who have been taught to 'be perfect as your Heavenly Father is perfect'. It makes more

sense, however, if we realise that all of us, are unfinished.

The reality is that we live on this earth as part and yet also not-part of it. To be human is to be incomplete but at the same time yearn for completion. Being human also means being imperfect, yet longing for perfection. We're broken and we cry out to be made whole. What all this tells us is that perfection is impossible because we are imperfectly human; in other words, perfectly human. What a paradox! But one that goes some way to explaining our broken promises and unfulfilled commitments. As the wise have often said, only God is perfect. Human actions must be basically defective in part. If we believe our good deeds are thoroughly pure and perfect it's a sure sign that they're thoroughly bad. We should take comfort in this.

Rev. Robert Devaney



Rev'd Barry Kirk
 0118 972 4519
 www.springwater.org.uk

some years ago in London at Holy Trinity, Brompton, and now has thousands of courses worldwide.

At Springwater there are groups meeting throughout the week, for all age ranges, starting with the Cradle Club on Monday morning for babies under one year. The Ark on Friday morning, for toddlers, has become so popular that an additional day is being considered. It is so encouraging to see the growth in the Sunday School, now named 'Messy Church' where children learn about the character of God and the love of Jesus through the medium of arts and crafts.

On Sunday mornings currently we are following the theme of 'Who am I?', 'How we are designed and created', and 'Now that I know who I am, what do You want me to do, Lord?' Challenging stuff! In April we will be looking at, among other subjects, 'The Case for Easter' and 'Jesus, our Passover' –

tracing the Jewish roots of this most important Christian festival.

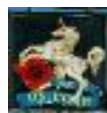
Easter is late this year, as late as it can be, celebrated on the first Sunday following the full moon that occurs on or after March 21st. But the Christians of the first century AD (the year of our Lord) celebrated the festival of Pasch (meaning to pass over or to spare), a continuation of the Jewish Passover, a feast instituted by God in commemoration of the deliverance of Israel from Egypt 3,500 years ago, and anticipating the sacrifice of Jesus, nailed to a Roman cross, on that first Good Friday. Whatever the history and changing fashions, the eternal truth of the Easter story remains – that Jesus, the Son of God, died for our sins, rose again, and lives today, willing to show His love to all who seek to know Him.

All are most welcome to celebrate Easter Sunday with us on 24th April.

Chris Mills

THE UNICORN

Kingwood RG9 5LX 01491 628303



Paul and Jane Knight, landlords of The Unicorn, welcome you to this beautiful country pub - open all day every weekend



PROFESSIONAL DOMESTIC CLEANING

ESTABLISHED 1996 FULLY INSURED

08450 540 520

www.themaids.org.uk

SPRUCE MAINTENANCE SERVICE

For all your property maintenance requirements including, decorating inside and out, paper hanging, wall & floor tiling, carpentry, hand painted kitchens and furniture, water damaged ceilings and Insurance work.

ROB SMITH

TEL: 0118 972 4560

Shinning Common Beauty

Waxing—Manicure—Pedicure—Facials

Eyelash Perming & Tinting—Eyebrow Shaping

Bali Sun Airbrush Tanning

Gift vouchers available for all treatments

Tel: 01189 723059

Susan Duke ITEC

Clubs and Societies

Peppard WI.

By the time you read this, Peppard WI will have had a complete change of President and Committee following our Annual Meeting, to take us into our 93rd year and our usual programme of interesting talks and activities. However, before that we have had to mourn the passing of our oldest member in both years and length of membership. Stella Payne, always known as Dinah, died aged 102 on January 5th 2011. She joined us in 1939 and supported us to the end. Her interests were many and varied. She played golf, and together with her husband, was a keen rally driver; she enjoyed singing, being an early member of what became the South Chiltern Choral Society. She organised and helped to embroider the kneelers in Peppard Church, and was a member of the Mothers' Union. Dinah and her sister-in-law, Pam, helped to deliver meals on wheels until, as Dinah commented, they were older than many of their recipients. In her last years many was the carer who was walked off her feet by a still energetic Dinah always wanting to go further!

In April, we have a speaker from the Vyne coming to tell us about the history of that stately home, following which we hope to have a trip there in August to see the house and gardens for ourselves.

In May, all WIs throughout England, Wales and the Islands will discuss the selected Resolution to be debated at the National AGM in June.

June brings something quite different when Ted Moore and his team give us a demonstration of how line dancing should be done. Those couch potatoes amongst us look forward to this with interest. Will it get us to our feet? Perhaps you might like to come and join us for that and all the other varied speakers and activities we have in store throughout the year.

For all information about the WI and Peppard WI in particular, please contact Mrs Diane Ducker on 0118 946 1381.

2nd Kidmore End Brownies

This term the girls have been awarded their Fire Safety badge. They have learnt a lot about what to do in case of fire in the home and ended the term with a visit to the Henley Fire Station. The girls found this really interesting and were able to sit in the fire engine itself.

We started on Monday, 28th February for a Thinking Day celebration with other local Brownie groups then continued with the Royal Wedding Challenge Badge. The girls are designing their own royal stamps, learning the National Anthem, completing a Royal family tree and making a Union flag, as well as playing lots of games and craft activities associated with a Royal wedding. The term will culminate with a red, white and blue themed party to celebrate the upcoming Wedding of Prince William and Kate Middleton. The term ends on Thursday, 7th April. Normal day of meeting is Wednesday.

After the Easter Holidays, we will be completing the Environment badge and visiting Longridge Activity centre, for the girls to take part in activities, like bell-boating and Jacob's ladder.

Should you be interested in putting your daughters name on the waiting list, please contact our Brown Owl, Jess Higson on 0118 9723206.

Laura Muncer, Tawny Owl

Peppard Bowls Club

We are preparing for the 2011 season and are looking for new members to join our friendly mixed club. If you fancy an afternoon out in the fresh air, with a

little laughter thrown in, pop in and visit our club on our next Open Day. This is taking place on Sunday, 17th April at 14.30 at Peppard War Memorial Hall.

Why not have some fun and spend an hour or so with us on our bowls green? Whatever your age or ability we shall be very pleased to welcome you. The only things you need to bring are a pair of flat-soled shoes and a sense of humour. Just turn up on the day or call me on 01491 572854 or visit our website www.peppardbowls.com to see what we're about.

Chris Eldred, Membership Secretary

Wyfold RDA

It has been a long cold winter with all the snow and ice but the ponies survived and seemed to have springs under their feet when we were able to start riding again. We are planning to run our in house dressage competition again this year as it proved to be very popular and successful two years ago. A possible addition this time might be a dressage to music class which several of our riders are keen to try.

Two new ponies will be arriving very soon. Luke, who is a black welsh cob and Teddie, who is small and white. Both seem to be very friendly and we hope that they will settle in quickly and become part of our successful team.

Adrienne Heriot

Chiltern Players

Chiltern Players' spring production is *Living Together*, the second in Alan Ayckbourn's acclaimed *Norman Conquests* trilogy.

It follows on and overlaps the action from the first play *Table Manners*, (performed to packed houses by Chiltern Players a year ago) and depicts the same six characters over the same weekend in different parts of the house. Annie's brother, Reg,

THAMES VALLEY ANIMAL WELFARE

Charity No: 900616

Has many beautiful and affectionate cats looking for loving homes. If you can give a home to any of them, please call: 01189 721871/01494 484527
Or visit our website www.tvaw.org.uk

Jamie Miller
Wall and Floor Tiling Specialist est. 1985

Supply and fit
Natural stone . Porcelain . Ceramic Under floor heating
to arrange a free consultation and quotation.
Call Jamie on 07771 821 596 or Henley 01491 628883

Mike Farina Auto Services

Servicing, repairs and welding for all makes of vehicles

21 Sedgewell Road, Sonning Common
Telephone: 0118 972 4036
MOT tests arranged

Rotherfield Peppard Educational Trust

Fund for support of educational activities

The Trust supports educational activities undertaken by under twenty-fives from Peppard. It can help with purchase of books, educational visits, special projects, and the like. If you may be eligible, or know of others who may wish to apply, please give us a call.

Robin Howles (0118 972 3528) or Sylvia Overbury (01491 628 245)

with his wife, Sarah, have come to spend the weekend at Annie's so she can go away for a couple of days as respite from caring for their demanding mother. However, things do not turn out as planned and what follows is an entertaining but perceptive insight into family dynamics and relationships told with Ayckbourn's signature wit and humour, at times almost bordering on farce.

Performances take place Wednesday - Saturday, April 13th-16th at 20.00 at Peppard Memorial Hall. Tickets are £8 and available from Occasions, Wood Lane, Sonning Common or from 0118 972 2201.
Carol Evans

Peppard Tennis Club

Peppard Tennis Club is situated behind the Red Lion Pub on Peppard Common. Our club nights are Tuesday and Thursday evenings starting at 18.00. We run courses for all standards and ages and have a very strong Junior Section with a team of excellent coaches providing top class tuition to all members. For adults we have rusty racket sessions for those who need to brush up on their tennis as well as beginners classes. We run numerous teams in the local leagues: Men's, Mixed, Ladies and Veterans. So, if anyone would like to come and join us you are most welcome. Any enquiries please contact 0118 9474051 or e-mail kimfry2@tiscali.co.uk

Circle Dancing

The arrival of 2011 has seen the group move into its 4th year of existence, and it has grown in numbers and in experience. Over that time, we have tried more than 150 dances from many countries and with many musical styles. Each month there is often a theme. If you are curious about dance names such as *Ballad to the Spring* or *Dandelion and Perfection* why not come and find out?

Every first Sunday of the month 15.30 – 17.00 at Christ the King Hall, Sedgewell Road, Sonning Common. And the first time is free! More details from 01491 874220

Ros Jennings

South Chiltern Choral Society

The Society will perform Beethoven's *Mass in C* and *The Gloria* by Carl Jenkins in the Falklands Chapel, Pangbourne College on 16th April at 19.30. Tickets obtainable from Linda Rumble 0118 9543193; adults £12, under 18s £6.

Sonning Common & Peppard Table Tennis Club

We play matches at the Peppard War Memorial Hall and have seven teams in the Reading & District Table Tennis League. The A team are top of Division 2 and looking at a return to the top division. Nigel Maltby, Simon Berry, Jason Roberts, Andy Turton and Paul Jarvis are also in the semi-finals of the Team Handicap cup after a recent 5-1 quarter final victory against Tidmarsh C. The B team are 4th in Division 2 with their chances of promotion dented by a recent 8-2 home defeat against 3rd placed Wokingham A. However, Keith Swin, Merril Massey, Brian Meheux and Malcolm Gregory will happily settle for another season in Division 2.

The C team have emerged surprise contenders for promotion from Division 3 and the team of Paul Treadgold, Ian Ayres, Tim Raby and Jeremy Willis are now favourites for the second promotion spot ahead of Tidmarsh D and Our Lady of Peace G. In Division 4, the relegation battle will go to the wire with

both the D and E sides battling it out to avoid the bottom two places.

In Division 5 the F team are comfortably in mid-table with Tony House their leading scorer, while in Division 6 the G team are also in mid-table with the club giving youth its chance through Danny Dokree, Guy Thurlough, Adam Parkes and Michael Legg all performing well alongside more senior players in Albert Shephard and David Parkes.

The club will be hosting its Club Championships on Sunday, 27th March with a high turnout expected.

Nigel Maltby, Club Secretary

Lions Fund a Dragon

Goring, Woodcote & District Lions Club recently donated the funds required to buy a role play unit for the foundation class of Kidmore End Primary School.

The role play kit can be taken apart and re-formed into different forms, e.g. a castle, house or shop, to inspire the children in role play and communication skills.

Jon Solman and David Freear were photographed at the school with a group of children from the reception year who had used the equipment to construct a dragon to celebrate Chinese New Year.

In the photograph some of the foundation class pupils delighted to be using this new equipment are, George Malaperiman, Joseph Norris, Ollie McDonnell, Freddie Stewart, George Clark and Daisy Stevens.



Computer Problems?

Is your PC misbehaving? Fault Diagnosis, Maintenance & Upgrades, Broadband, Networking, Data Recovery & Migration, Virus Cleaning, and much more.

Phone Robin Piercey at Influential Computers on 01491 680036, or visit www.influentialcomputers.com.

Andrew Page Oak
... for everything oak
www.andrewpageoak.co.uk
01491 828207



Everything you need for
your pets and wild birds

Food & Accessories

Friendly personal service with lots of parking

Southlea House, Blounts Court Road

Sonning Common

Tel: 0118 924 2747

(Just at the top of Gravel Hill)

Peppard Diary

APRIL						
Fri	1	Red Lion/Car Rally/ 11.00	Sat	7	Hort Soc/SC Vill Hall/Table Top Sale	
Sat	2	SC Library/Story Time/4-8 years/10.00 Hort Soc/Spring Show/CE School	Mon	9	RPPC Meeting 19.30/Planning 21.30/Pavilion	
Sun	3	On Your Bike/10.30/SC Primary School	Tue	10	CAB/SC Surgery/09.30-12.30/0844411144	
Mon	4	Circle Dancing/Christ the King/15.30-17.00 SC Library/Rhymetimes/10.00 Mobile Library/Peppard School/11.45-11.55	Wed	11	Peppard WI/Mem Hall/14.30	
Tue	5	CAB/SC Surgery/09.30-12.30/0844411144	Thu	12	FISH Pub Lunch/11.30/details FISH office	
Fri	8	Peppard School Term ends	Sat	14	SC Library/Story Time/4-8 years/10.00 All Saints'/Concert/ <i>Of Life and Love</i> /19.30	
Sat	9	SC Library/Story Time/4-8 years/10.00	Sun	15	Christian Aid Week begins	
Mon	11	RPPC Meeting 19.30/Planning 21.30/Pavilion	Mon	16	SC Library/Rhymetimes/10.00 Mobile Library/Peppard School/11.45-11.55	
Tue	12	CAB/SC Surgery/09.30-12.30/0844411144	Tue	17	CAB/SC Surgery/09.30-12.30/0844411144	
Wed	13	Peppard WI/Mem Hall/14.30 Chiltern Players/Mem Hall/0118972220/+Thu,Fri,Sat	Wed	18	Peppard Lunch Club/Mem Hall/12.00/01189722808	
Thu	14	FISH Pub Lunch/11.30/details FISH office	Sat	21	RPPC Planning Meeting/Pavilion/10.00 SC Library/Story Time/4-8 years/10.00 Greenshoots Open Day/10.00-16.00	
Sat	16	RPPC AGM/Mem Hall/10.00 SC Library/Story Time/4-8 years/10.00 SC Choral Soc/19.30/Pangbourne Coll/01189543193	Tue	24	CAB/SC Surgery/09.30-12.30/0844411144	
Sun	17	Peppard Bowls Club Open Day/14.30	Sat	28	SC Library/Story Time/4-8 years/10.00	
Mon	18	SC Library/Rhymetimes/10.00 Mobile Library/Peppard School/11.45-11.55	Tues	31	CAB/SC Surgery/09.30-12.30/0844411144	
Tue	19	CAB/SC Surgery/09.30-12.30/0844411144 Public Inquiry/K'wood Comn fence/N'bed Comm. Sch	JUNE			
Wed	20	Greys Ct/Easter Egg Trail/10.00-12.00/01491628529 Peppard Lunch Club/Mem Hall/12.00/01189722808 Public Inquiry/K'wood Comn fence/N'bed Comm. Sch	Sat	4	SC Library/Story Time/4-8 years/10.00	
Thu	21	SC Library closes 17.00 until Wed 27 th 14.30	Sun	5	Circle Dancing/Christ the King/15.30-17.00	
Sat	23	RPPC Planning Meeting/Pavilion/10.00 SC Library/Story Time/4-8 years/10.00	Mon	6	SC Library/Rhymetimes/10.00	
Tue	26	CAB/SC Surgery/09.30-12.30/0844411144	Tue	7	CAB/SC Surgery/09.30-12.30/0844411144	
Wed	27	Hort Soc/Water Gardens/CE School/19.30	Wed	8	Peppard WI/Mem Hall/14.30	
Thu	28	Greys Ct/Bluebell Walks/10-12/08442491895/+Fri/Sat	Thu	9	FISH Pub Lunch/11.30/details FISH office	
Sat	30	SC Library/Story Time/4-8 years/10.00	Sat	11	SC Library/Story Time/4-8 years/10.00	
MAY				Mon	13	Mobile Library/Peppard School/11.45-11.55 RPPC Meeting 19.30/Planning 21.30/Pavilion
Sun	1	Circle Dancing/Christ the King/15.30-17.00	Tue	14	CAB/SC Surgery/09.30-12.30/0844411144	
Tue	3	CAB/SC Surgery/09.30-12.30/0844411144	Wed	15	Peppard Lunch Club/Mem Hall/12.00/01189722808	
Sat	7	SC Library/Story Time/4-8 years/10.00	Sat	18	SC Library/Story Time/4-8 years/10.00	
FISH Office: 0118 9723986 (Mon-Fri, 09.30-11.30)		SC & Peppard Table Tennis Club/Mem Hall – Juniors: Mon 17.00: 01189463191		Mon	20	SC Library/Rhymetimes/10.00
Green Gym: Robin Howles – 0118 9723528		Peppard Bowls Club: Mon & Thurs 14.00 – 16.00 (01491 572854)		Tue	21	CAB/SC Surgery/09.30-12.30/0844411144
				Sat	25	RPPC Planning Meeting/Pavilion/10.00 SC Library/Story Time/4-8 years/10.00
				Mon	27	Mobile Library/Peppard School/11.45-11.55
				Tue	28	CAB/SC Surgery/09.30-12.30/0844411144

BROWN BIN COLLECTION SERVICE

Month	April		May		June		
	6 th	20 th	5 th	18 th	2 nd	15 th	29 th
Brown bin	✓	✓	✓	✓	✓	✓	✓
Garden waste	✓	✓	✓	✓	✓	✓	✓

For GREEN (recycling) and GREY (non-recycling) bins please see SODC Calendars, which have been amended for some properties in the Parish. Food waste will be collected weekly. Phone: 03000 610610, or www.southoxon.gov.uk or www.PeppardNews.co.uk

N.B. On 6th April people can put out a reasonable amount of extra garden waste next to their brown bin. This extra waste, up to the equivalent of an extra bin load, should be put out in a black bag, plastic box or sturdy container and should obviously be garden waste so please leave the bag open or lid off so crews can see what it is. The extra waste must also be able to be lifted by one person.

CHURCH SERVICES

Sunday Services at All Saints'	APRIL				MAY					JUNE				NOTES
	3♦	10	17	24⊠	1	8	15	22	29	5	12✠	19	26	
09.00 Communion	✓	✓	✓	✓	✓	✓	✓	✓	✓	✓	✓	✓	✓	1. 150 th Anniversary of Hymns Ancient and Modern 2. 400 th Anniversary of King James Bible (Authorised Version) 3. Festal Evensong 4. Benefice Eucharist at All Saints'
10.30 Communion (sung)			✓	✓		✓		✓	✓ ⁴		✓		✓	
10.30 Matins		✓ ¹			✓					✓				
10.30 Peppard Praise	✓						✓					✓		
10.30 Sunday School				✓		✓					✓			
18.30 Evensong	✓	✓	✓	✓ ³	✓	✓	✓ ²	✓	✓	✓	✓ ³	✓	✓	

♦3rd April Mothering Sunday; Good Friday 22nd April, 10.00 Matins and Litany, 14.00 Devotional Hour; ⊠24th April Easter Day; ✠12th June Whit Sunday

Sunday Services at Springwater
(Peppard Congregational Church)
Family Service: 10.30 - 11.45 ♦ Sunday School 10.30 - 11.30

Mass at St Michael's Roman Catholic Church
♦Monday-Friday 09.00♦
Saturday 17.30 ♦ Sunday 09.00 & 10.30

PEPPARD

BUILDING SUPPLIES

Trade Counter

Bishopsland Farm, Peppard Road, Dunsden, Reading RG4 9NR

Tel: 0118 972 2028

Fax: 0118 972 4559