

Peppard News

A community newspaper for the parish of Rotherfield Peppard

Spring 2012

2012: a Big Year For Britain

With the Queen's Diamond Jubilee and the Olympics, it is going to be a great year. And as you would expect the Peppard Revels will once again be hosting a party.

The Peppard Revels were originally somewhat drunken and bawdy affairs which took place on the Common in the seventeenth and eighteenth centuries on Whit Monday with cudgels and other dangerous implements. Needless to say the Revels did not survive (nor, possibly, did some of the participants!).

In 1997 a committee was set up, under the chairmanship of Sir David Money-Coutts, to plan a celebration for the millennium. In 1999 on New Year's Eve, 420 of us sat down to dinner in a marquee on the Common followed by a barbecue the next day and an ecumenical Church Service on the Sunday. As it seemed to go well the villagers demanded more! So another event was held in 2002 to mark the Queen's Golden Jubilee and it was suggested that the name Peppard Revels be revived. More celebrations followed in 2005 to celebrate 200 years since the Battle of Trafalgar and in 2008 for the centenary of Ian Fleming's birth with a James Bond theme.

We thought we should have an Olympic theme in 2012 and so we hope as many of you as possible will enter a team for the fun games on the Saturday. We need mixed teams of a woman, a man and two



PEPPARD REVELS

children aged between four and fourteen. Enter early – there is a limit on numbers. The pupils of Peppard Primary School will perform

an opening ceremony.

After tea, we'll be showing a children's film in the marquee (with popcorn and hot dogs) and then in the evening *Chariots of Fire*. The Ruchetta Restau-



John Hasler and Linda Collison checking the menu with Paul Clerehugh

rant has promised to stay open late if you want to book dinner there afterwards.

Following the usual ecumenical Sunday Service, everyone is welcome to join us for the Big Lunch at a barbecue. We hope to be able to screen the Queen going down the Thames in the royal barge accompanied by an enormous flotilla of boats.

And finally, on Monday evening, the dinner – catering by Paul Clerehugh and his team from the Crooked Billet in Stoke Row. Peppard and Sonning Common residents have priority booking until the end of February. There will be the usual fireworks and dancing. The beacon will be lit and hopefully we'll watch the Queen lighting the main beacon around 22.30. There'll be a licensed bar operating throughout the events.

The Village that knows how to party: friends from elsewhere often ask me how we manage to stage a show like the Revels in our small village. One of the reasons the Revels seem to have survived in modern form is that the villagers of Peppard and the surrounding parishes have always been ready for a party and are prepared to make something work. When you consider the fact that the dinner for well over 400 people has always been full and last time was oversubscribed, it is pretty amazing for a village of our size. On top of that something like 60 volunteers will be involved in setting up and running the Revels this year. So to everyone who will be helping and to all of you who will be coming, have a great time!

John Hasler, Revels Chairman

Editorial

This issue of *Peppard News* has an international flavour thanks to the wonders of modern communications. Throughout the period when this issue has been put together, half of our small team has been away from Peppard but has still kept all hands on the tiller. One has been contributing from a hospital bed, one from a skiing trip in the French Alps and one from a family visit to Texas. All this, of course, in liaison with the rest of the team beavering away at home. This level of involvement would just not be possible

without the existence of e-mail and the internet. What would we do without it?

On a more domestic note, our front page carries details of the forthcoming Peppard Revels Olympics to be held over the Queen's Jubilee weekend. Hopefully you will all enter into the spirit of the event to support the hard work put in by the Revels Committee and the local causes it supports. Make it a weekend to remember!

Best wishes

Tony Treglown, Editor

Peppard News is a community newspaper published by Peppard News Publications with financial support from Peppard Parish Council, and is distributed free to almost all households in the ecclesiastical and civil parishes of Peppard. Views expressed are not necessarily those of Peppard News Publications or of the RPPC unless stated as such.

Issues: March, June, September & December

Editor: Tony Treglown,
87 Shiplake Bottom, Peppard Common, RG9 5HJ
e-mail: peppardnews@aol.com

www.PeppardNews.co.uk

Contributions accepted via e-mail or post to Penny Harvey, 12 Shiplake Bottom, Peppard, RG9 5HL

Advertising: Ian Fraser - phone: 01491 629631

Printed by Trinity Creative Resources
Earley RG6 7RH

Our Schools

Peppard Primary School

Although it seems far behind us now, our Christmas activities certainly deserve a mention. The term came to a close with an extremely touching Christingle Service in which every child of the school participated. Parents, friends and families completely filled All Saints' church. KS1 and Foundation children worked their socks off and performed a spectacular alternative Christmas nativity entitled *Christmas with the Aliens*. This was expertly created and produced by staff, Rachel Hudson, Lynne Pitson and Heather Brealey.

Looking forward to the Spring Term, children from years 3 and 4 will be taking part in the Henley Athletic Competition with all the schools from the surrounding area and have been working hard in preparation for this. We wish them lots of luck!

All children from Peppard Primary School are gearing up for their annual involvement in the Henley Youth Festival from 17th-24th March. This year's theme of *Motion* was inspired by the 2012 Olympics. Our children will be participating in a variety of workshops organised by the Youth Festival, varying from Fencing, Softball, Squash and Skipping to a science workshop on 'Forces', the Young Shakespeare Company performing *Hamlet*, to Tall Stories' production of Julia Donaldson's *The Snail and the Whale*.

There is much chatter in the playground about both solo and group ideas to enter the singing, dancing, junior music maker and Thursday and Friday stage evenings. Everyone is welcome to come along and support the children at these events. Tickets can be purchased from the Kenton Theatre Box Office. Or come along to the Commotion in the Square Art Event on Saturday, 17th March, where there will be free workshops, a bike display, sculpture and an Art trail, as well as the Regal Cin-

Peppard C of E Primary School

Peppard Common RG9 5JU
Phone: 01491 628354

Acting Headteacher

Mrs Brenda Brown

Headteacher

Mrs Christine Grieve

Chairman of the Governors

Christine Bradbury

ema showing the film competition entries in the morning. Please see www.hyf.org.uk for details about all the events and competitions that are part of the Henley Youth Festival 2012.

Peppard School Governors are pleased to announce the appointment of Mrs Christine Grieve as our new Headteacher. Following an intensive selection process, Mrs Grieve was identified as the person who could lead the school forward in its mission to build on our recent success, confirmed in our latest OFSTED and SIAS reports.

Mrs Grieve will shortly be moving from her present home in Devon in order to fulfil this role. She has links to the local area and undertook her training to become a teacher at Reading University. Following several successful years experience in primary education in Devon she was selected to become the acting Headteacher at Holywell Church of England School in order to help them through a difficult period. Mrs Grieve has been instrumental in bringing about changes to improve opportunities and standards for the children in her small C of E Primary School in a rural village community and her energy and enthusiasm will be an asset to our school.

We are pleased that Mrs Grieve will be able to join us in April following the retirement of Mrs Brenda Brown who

has acted as interim Headteacher following the resignation of Tina Nowell. She has continued in this temporary post guiding the school through a very intensive series of successful inspections while at the same time supporting and encouraging all members of the school community. Her wisdom has been very much appreciated and we will hope to continue our relationship with her in her role as adviser to our new Headteacher.

We look forward to a new era at Peppard C of E School under the leadership of Mrs Grieve and to your continued support in our mission to create an outstanding school for the children in this community.

If you are moving to the area with children, we currently have spaces in some of our year groups and would be delighted to show you around. Please call for further information and to make an appointment, 01491 628354.

Tina Blumfield, Parent Governor

Friends of Peppard School

We are having an enjoyable time deciding how to spend all the funds we have raised! We are looking into playground equipment, gardening areas and a sound system for music and drama. We hope to be able to report on some purchases soon and would like to say a big thank you to all those who have given their time and money to make this possible.

Recent fund-raising events have included a Dads' curry night (which seems to have become a tradition now!) and the sale of our lovely school calendar. Future events include the School's Valentine's Disco when the children will be practising their new dance moves and the Quiz Night on 9th March, 19.00 at Peppard War Memorial Hall which will be open to everyone. Please contact the School for tickets on 01491 628354.

Sarah Brophy, Co-Chair

ALL THE BASICS
For Your Home

MR FIX-IT

Call Tony now on 07794 464273 or evenings on 0118 972 3004
or e-mail misterfixit@tiscali.co.uk
For a free quote and call out
www.diyosrecoveryinthamesvalley.co.uk



COMPASS ELECTRICAL

All domestic/commercial
Internal & external
ELECTSA registered & approved
Local & reliable
Please call for a free quotation

0118 972 3972/07737 413314

HOBBS OF HENLEY LTD

THE BOAT PEOPLE

at HENLEY-on-THAMES

DAY BOAT HIRE - PASSENGER BOAT AND PARTY HIRE
Repairs, Fuels & Service
BOAT & ENGINE SALES

Established over 130 years - Telephone (sales) 01491 572 035

WEE-COT SEATING

*Upholstery, Loose Covers, Replacement Cushions,
Chair Caning, French Polishing and Furniture Repairs*
LIZANNE SMITH Tel/fax 0118 972 4560

Our Young Achievers

We are very proud of two young people from Peppard who have volunteered to join a charity that takes disabled and disadvantaged children on ski holidays. Elody Fumi and Matt Griffin go off to Italy with the group on 25th February.

Elody and Matt join a group that travels overland with 20 children and 29 CRB-checked volunteers, including a paediatric medical team, carers and trained ski guides to meet the 24 hr needs of each individual child. The charity, Katie's Ski Tracks, provides all the necessary medical and adaptive ski equipment, and a full entertainment programme. All the volunteers give freely of their time and either fundraise or help pay their own fares.

Peppard News would love to hear all about their experiences when they return.

Snippets

Car Drivers Needed

FISH, along with most small and medium sized charities, is totally dependent upon volunteers. Without the generosity of the volunteers giving their time, and our clients, along with many others in the community, giving donations, we would not exist. When we lose a few volunteers in a short space of time we go through a crisis until we can replace them. 'Advertising' in the form of articles like this, together with word of mouth appeals, normally help us recover. Recently we had problems through retiring office helpers and retiring bus drivers but these crises are now over thanks to new volunteers offering their time. Now we are short of car drivers, so if you feel you could give up some time, either occasionally or regularly, to drive someone to a medical appointment, please let us know by calling our office on 01189 723986 – the office is manned weekdays from 9.30 - 11.30 but if

that is inconvenient you can leave a message.

It is the same number for booking bus trips – by the time you read this the March timetable will be available covering both social trips and shopping trips. We regularly make shopping trips with some empty seats, which we would love to fill. Remember for shopping trips, the service is door to door and you can use bus passes.

Phil Clark, Chairman

101 - New Police Number

Thames Valley Police has now adopted the new national single non-emergency number. This will replace the old one at the end of March. Calls will cost a flat rate of 15p at any time whether from a landline or a mobile. The new police number links non-emergency calls to the nearest police station of the caller. You can report offences, car thefts and criminal damage more easily but 999 is still the number for real emergencies and serious offences.

Lions Annual Charity Run Results

More than 400 people took part in the 28th Annual 10k Charity Road Run organised by Goring, Woodcote & District Lions Club on Sunday 8th January 2012. Over £3,500 was raised which will be shared between the Air Ambulance (Berks/Oxon/Bucks) and *Robbie the Robot* (The RBH Prostate Cancer Appeal).

Full race results are on the Goring, Woodcote & District Lions Club website: www.lions-gwd.org.uk

Next year the Lions 10K Run is planned to take place on Sunday 13th January 2013. If you would like to take part or

help with marshalling please contact the Lions well before the day.

For more details please telephone: 0845 833 9837

Peppard Tennis Club

At last our bottom courts have been resurfaced although they won't be painted until March. We have a new practice wall and, best of all, a path which makes life a lot easier.

If any one would like to play, do turn up around 18.30 and you will be made most welcome. If you haven't played for a while and feel you need some practice before turning out for a club session, we run a rusty rackets moment on a Wednesday evening at 19.30!

For more information on any of our sessions please phone Sam Clothier, Head Coach, on 07540 724400 or Kim Fry, Secretary, 0118 9474051.

Kim Fry

Circle Dancing

Our group has continued enthusiastically over the winter months embracing the spirit of the season with dances to familiar carols in December, dances to Native American music entitled *Wishes for Happiness and Prosperity* at New Year, and a dance, *Sami Paths*, echoing the wanderings of the Lapland reindeer herdsman, for the cold days of February. Whether we are low in numbers or high, as long as we can make a circle, it is a joy to gather and move to the different rhythms from around the world. No partner required; no need to worry about mistakes – they're variations! Give it a try. For details ring Ros, 01491 874220. Every first Sunday of the month at Christ the King Hall, Sedge-well Rd. Sonning Common, 15.30-17.00. First time free and includes refreshments.

Ros Jennings

Do you need an Accountant?

- Self assessment
- VAT
- Corporation tax returns
- Accounts
- Companies House returns
- Business advice

Phone Keith Jefferies ACMA

on 0118-9722611 or 07749-415264
for a free initial consultation

PODIATRY / CHIROPODY CLINIC

Sonning Common

For enquiries & appointments call

Heidi Snookes-Owen

B.Sc., D.Pod.M., M.Ch.S., S.R.Ch.
HPC REGISTERED

0118 972 4742

the studio gallery

OPEN
Mon - Sat
10am - 4.30pm

Support your local business... @ MANOR FARM PEPPARD for...

BESPOKE FRAMING

PRINTING ... onils * canvases * photographic *
fine art * acrylic * aluminium * ...

ART & DESIGN ... St Peter Blake *
PATRYN * ...

www.studiogalleryuk.com

Manor Farm, Peppard Common, H-o-T, RG9 5LA t: 01491 629635

The Councils

Parish Council News

Nick Launders stood down as Chairman of the Parish Council at the December meeting. After three years in charge he felt the time was right to take this step but will continue as a Councillor. Councillors paid tribute to Nick at the January meeting and made a personal presentation to him to mark his time as Chairman.

The Pavilion and Sports Field on Stoke Row Road is a valuable asset for the village and the Management Committee that has been set up to manage it has been busy. After a lot of work, a new agreement has been put in place with Peppard Cricket Club which replaces the old one signed in February 1983. Members of the Cricket Club and Councillors celebrated the signing at the Unicorn at the end of January. The new agreement gives the Cricket Club priority use of the ground during the cricket season. Improvements to the showers and insulation in the pavilion are in plan for this year.

New trees were planted in Carling's Orchard in December. These have been donated by a number of individuals and will be dedicated at a Celebration for donors and those who have helped on 31st March.

Reviewing Planning Applications is an important part of what the Parish Council does. Clive Mills has now taken over as Chairman of the Planning Committee which meets every two weeks to make recommendations to South Oxfordshire District Council on every one of some 60 or so applications from the Parish every year.

Looking ahead, the Council is heavily involved in developing the Community Plan. (More details below)

I encourage everyone to get involved in our local community and if you think that the Parish Council can help you, please get in touch using our website or by talking to one of the Councillors. We also still have three vacancies on the Parish Council. If you feel you could help, just come along to any Parish Council Meeting (second Monday of each month at the Pavilion) and find out what's involved.

David Hammond

Know Your Councillor

David Hammond

Who is the person that was brave enough to step into Nick Launders' shoes and take on the Chairmanship of the Parish Council? David Hammond volunteered to join the Rotherfield Peppard Parish Council in October 2009 after reading a plea in *Peppard News* and following a conversation with a councillor during a village clear up. He had no idea what to expect or what was involved. He felt he wanted to be involved with the community but didn't really relate to any other local organisation so joining the council seemed to be the right 'fit'. His wife, Alison, had, by that time, become a CAB advisor and was actively encouraging him to do something too.

David has lived on the Wyfold Court estate in Kingwood for 11½ years - and loves the area. Their two sons have now flown the nest: one to live in California with his family and the other to live in London. David worked for a large multinational company before finally retiring in 2006. He showed his willingness to put his hand up when, after settling in, he joined his own residents' committee to oversee the maintenance of the estate.

He was genuinely surprised by the amount of legislation involved in Parish Council activities and having come from a high-tech company, he found some of the procedures somewhat arcane. He readily admits to a tendency to question the way things are done and believes that since the world has moved on, then so should some of the processes within our local council. His first role was on the Planning Committee and he views this as a very important aspect of the council's role. He accepts that development will take place but believes that the village as a whole should benefit. He was instrumental in ensuring that the Manor Farm proprietors adhered to the planning laws.

As Chairman, he finds being well organised essential and wishes to use his time to listen to people and establish a common way forward and harness the talents of other councillors and members of the community. One thing that concerns him greatly is a clear indication, highlighted in the Community survey, that some of our

Parish Council

Chairman: David Hammond
01491 628774 / 07798 763795

Parish Clerk: Linda Collison
01491 629676

e-mail: clerk@rppc.org.uk

Website: www.rppc.org.uk

SODC Councillors: Paul Harrison
0118 972 2665

& Alan Rooke—01491 572919

OCC Councillor: Carol Viney
01491 680887

Rotherfield Peppard Parish Council usually meets on 2nd Monday of the month at 19.30 in the Pavilion, though there is no meeting in August. Parishioners may attend and observe, and may raise briefly issues of concern to them. All may attend intermediate planning meetings as well - see Diary for dates and times.

Community Plan

We received more than 1000 completed Questionnaires. Thank you again to all who took the time to take part. This terrific response overwhelmed the software used for the analysis but we now have the results and they are available on the Parish Council website www.rppc.org.uk.

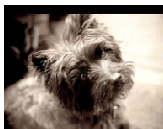
More than 150 volunteers have come forward. The areas where they are now working include Carling's Orchard, the Revels and Kingwood and Peppard Commons Volunteers.

Respondents love where they live and its peaceful rural nature and generally do not want things to change. There are, however, concerns about speeding traffic, the repairs to the roads, the poor mobile phone access and broadband speeds. There is also a desire to see a play area for children.

Working parties have been set up to look into these items and we will be holding a public forum at the Sports Pavilion on Wednesday, 28th March at 19.30.

If you would like us to keep you updated or would like to help, in particular with the telecommunication issues, please contact our Clerk on 01491 629676 or clerk@rppc.org.uk

Tony Cotton



Sonning Common Pet Care

Dog Walking, Boarding, Puppy Visits
Home Visits for Cats, Rabbits
& Other Small Animals

Contact Alison Cartwright
Tel 0118 9722948
07787 114536

54 Woodlands Rd
Sonning Common
RG4 9TE



Grounds Maintenance, Grass Cutting, Hedge & Tree Work

Country Estates, Private Homes, Local Businesses
Local References

01491 826925 07977 237798

young people feel isolated and even lonely. He believes it important that the council takes action to address this.

Not particularly interested in sport or hobbies, he wishes to see more of the world and having travelled to New Zealand last year, Peru is the next stop on his busy agenda. It's good to know that David is well organised enough to ensure a good work/life balance.

Rita Hadgkiss

District Councillor's Report

South Oxfordshire and the Vale District Councils have been shortlisted for the Council of the Year Award. The final result will be announced on 14th March.

Residents are set to be the first in the country to see their council tax go down, under proposals put forward by the Leader of SODC. Cllr Ducker is proposing a 2½ per cent reduction. This would reduce the amount that a Band D taxpayer pays for the services provided by South Oxfordshire District Council from £123.73 to £120.64. The current level of council tax charged in South Oxfordshire is already one of the 20 lowest in the country for district councils, and the 2012/13 reduction will guarantee that residents will get even better value for money from their council tax.

We are able to put forward the proposed reduction thanks to years of careful management of resources. The council joined up with neighbouring Vale of White Horse District Council to provide the majority of services on a shared basis, a move which delivers savings in excess of £5 million a year.

The council has also outsourced a number of key services, securing both high performance (the waste recycling rate, for example, is one of the best in the country, regularly exceeding 70 per cent), and low unit cost. It has also invested money

soundly in both property and financial markets to secure a steady income that makes it less vulnerable to fluctuations in Government funding.

Although the Core Strategy does not directly affect us in Peppard it does impact us by increasing the number of new properties to be built in Sonning Common. Hence we can expect an increase in traffic.

District Councils have to provide information on land suitable for development, otherwise developers would be able to override the wishes of the council when their appeal goes to the planning inspectorate. As part of this exercise the Central Government requires we do a Core Strategy document. Sonning Common, along with twelve other large villages in South Oxfordshire, is expected to take a large number of houses, but this is envisaged to be in eight to nine years' time. The Core Strategy was developed in 2010 and has been submitted to the Secretary of State (Planning Inspector). The Inspector's decision is expected in May.

Tell Us Once is a new service for the recently bereaved. When someone close to you has died, there are a lot of things that need to be done at a time when you least feel like doing them. It is part of a nationwide project led by the Department for Work and Pensions, and is designed to make it easier for the public to inform the necessary authorities and departments about a death.

In Oxfordshire, registrars will be able to inform over 20 different agencies on behalf of anyone who chooses to make use of the service. Previously, once a statutory death registration had been completed, you would have to contact all the local and national government agencies to inform them of the death.

For information call 0845 129 5900 or visit www.oxfordshire.gov.uk/tellusonce

Paul Harrison

ORCC News

Oxfordshire Rural County Council's chairman, Dr. John Sharp, comes to the end of his term of office soon and we are looking to recruit his successor in good time so that we can have a workable hand-over period. We will be looking for someone who knows Oxfordshire well, has a sound appreciation of the things that matter to rural communities and a good understanding of the political and financial factors that have (and will have) an impact both on ORCC and on the communities we serve. We will want someone who will help raise our profile and lead the organisation through a period of considerable change.

If you are interested, or can think of anyone who might be interested, please keep an eye on our website. For more information contact Linda Watson, Chief Executive on Linda.watson@oxonrcc.org.uk

Your local Air Ambulance needs new volunteers. If you like meeting new people, trying new things and joining a fantastic social network – why not volunteer a few hours per week for the Air Ambulance? We do not receive any Central Government or National Lottery funding so without volunteers we would not be able to continue saving lives in your community, 365 days of the year.

TVACAA needs YOUR help to ensure the Air Ambulance can continue to provide a life saving emergency service in Oxfordshire. Can you help us make a difference?

Contact: Eleanor Green, Oxfordshire Fundraising Manager, on 0300 999 0135 or eleanor@tvacaa.org.

An unabridged version of the latest ORCC Newsletter is available on the Peppard News website or for more information go to www.oxonrcc.org.uk.

**Traditional country pub, good beer,
great food, children's play area.**

Where?

THE RED LION
Peppard Common
01491 628329



*Shoe Repairs Dry Cleaning Alterations
Haberdashery Knitting Yarns*

Occasions

23c Wood Lane, Sonning Common
0118 972 3358/4890

Gardiner's
NURSING AND HOMECARE

Our team of reliable and dedicated nurses and carers are here to help you.

Please call
0118 9476666



Established in 1980, we have built a reputation for delivering quality nursing care and supporting our clients to remain in the comfort of their homes.

www.gardinersnursing.co.uk
10 Church St, Caversham, Reading, RG4 8DZ

Our Village

Peppard's Oldest Resident

If you know Mrs Mollie Walker I'm sure you will agree that she is an amazing lady. She was born in February, 103 years ago, in the reign of Edward VII so has lived through two world wars and remembers the sinking of the Titanic in 1912. As her birthday is in the winter she delays celebrations until the better weather so a modest fish and chips with her daughter, Sheila, and son, Graham, is enough for now.



Mrs Walker was born in Pencoedtre, South Wales; the only child of a Lancastrian mother and Welsh father. At seven, Mrs Walker started school in London where her father worked at that time. A little later, her father bought a business in Reading where they lived before moving to Peppard. At the time the house was lit by oil lamps and candles and the water had to be pumped by hand as there was no electricity. Mrs Walker attended the Abbey School in Reading and a private school in Seaford, Sussex.

She worked as a companion/chauffeur at the age of 21. She was a competent driver; her father having bought her an Austin Seven when she was only seventeen. She became a member of the Institute of Advanced Motorists in 1957 despite never having taken an initial driving test!

Mrs Walker married John in 1931 when she was 22 and he was 23. Their first home was in Sonning Common. They then moved to The Old Cottage, Kingwood before building her present home just up the road in 1937. Mr Walker had a motor factor business and died in 1990 just days before his 80th birthday.

As her children grew older Mrs Walker became interested in doing more outside the home and joined the WVS. She was awarded an MBE in 1978 for her civil defence work and modernising the Meals

on Wheels Service in the South of England. She was also a member of Peppard Parish Council from 1954 to 1979. During the Second World War she had helped at the prisoner of war hospital in Kingwood, known as Kingwood Camp. She was determined the common land should not be built on and co-founded the Friends of Kingwood, becoming its secretary.

To mark her 100th birthday, she planted a copper beech tree, supplied by the Parish Council at the Sports Pavilion.

Mrs Walker has a strong Christian faith. She lives by her principles to do everything as well as she can, to be honest and do no harm. She still drives locally and does not qualify for a disabled blue badge as she can walk too far unaided! She values such inventions as the telephone and television and enjoys cooking, crosswords, looking after her faithful companion - her dog Meg - pottering in her garden and feeding the birds. Mrs Walker is a wonderful example of what can be achieved effort and she is an inspiration to us all.

Sue Nickson

Peppard War Memorial Hall

Sadly, Jill Kendal and her husband, Roger, also stalwarts of the Chiltern Players, have retired as Trustees of the Hall. Jill has been an indefatigable and highly effective Trustee Secretary whilst Roger has always helped in many, many ways behind the scenes. I have only known Jill and Roger since I volunteered to become Chairman of the Trustees a year ago but even in that time it has been very clear to me just how much the continuing life of the hall owes to both of them. Over many years and in every area from event organising to painting and decorating, they have both been quietly and charmingly tireless. They will be a truly hard act to follow but we must now find others willing to take their places as Trustees

to help us keep this great old lady of a hall going strong for many years to come.

We are now eager to recruit a new Secretary to the Trustees so if anyone is minded to volunteer please e-mail me on hairyoldgit@hotmail.co.uk

Philip Collings

Health Walks

Want to get fitter for the summer? Come and join our group of walkers, and exercise in the countryside. Sonning Common Health Walks organise 10 walks a week - each of which is free!

Our new timetable has daily walks designed to enjoy the countryside, particularly featuring the bluebell woods, this spring. The new timetable starts on Tuesday, 10th April.

Walks are graded to help *you* judge which are suitable for your fitness level. We have two trained leaders on every walk, one to accompany the faster walkers and the other to bring up the rear with the slowest walker.

For details of the walks, and the new timetable, take a look at our website, at www.sonningcommonhealthwalks.co.uk. Printed copies can also be obtained from the Health Centre, the Library or the Herb Farm. If you would like more information please contact me on 0118 9242515.

Chris Brook

On Your Bike

The 6th Annual Family Charity Bike Ride will be held on Sunday, 22nd April starting at 10.30 at Sonning Common Primary School. This year there will be the usual 6, 12 and 20 mile cycle routes, and a supervised playground cycle (entry £5 to enter in advance, £7 on the day). New for 2012 will be *On Your Feet*; two treasure hunts of 1 and 3 miles (entry £3 or £1.50 if you have already cycled). Enter online at www.onyourbikesonning.com or call 0118 972 4487. All proceeds will be shared between Sue Ryder and Sonning Common Primary School. If you enter by 21.00 on 29th March you have a chance to win a free bike.

Penny Snowden

This page sponsored by

TANDOORI
Connoisseur

An Emporium of Indian Cuisine

Fully Air-conditioned
Open 7 days a week, including bank holidays
Take-away menu - prompt service

21 Wood Lane, Sonning Common - Phone: 0118 972 3104/1054

Commons News

Five work parties, all well attended, have now taken place, and already the volunteers have made a real impression on Kingwood's paths and glades, and transformed the Salt Depot from a litter-strewn eyesore to a surprisingly attractive space – and an ideal venue for our winter barbecue. The last work party was held on Saturday 4th February where members were joined by the Green Gym. Thanks to all of you who turn up and join in!

This group meets on the first Saturday of each month from 09:30-12:00 at Red House car park off Stoke Row Road. We are happy for people to come for all or part of the time.

The working party will be holding a quiz night on Wednesday, 4th April. Tickets are £8 per person, including supper. For further information contact Ann Pearce on annpearce321@btinternet.com

Kingwood Common Day will be held on Easter Saturday, 7th April. This will include a demonstration of a heavy horse working, activities for children and guided walks.

Do you know a local business that would like to sponsor us? Organiser, Ann Pearce, is actively seeking funds for the group – to buy tools and train volunteers. Please let her know.

Would you like to interview local residents about the commons? We are looking for volunteers to take part in oral history recording (equipment provided), to capture the memories and stories of people whose families have lived on and around the commons for generations.

We plan to hold walks and other outdoor events this year – more news on that later. For now, wishing you a happy, healthy and invigorating 2012!

Paul Harrison

Beating the Bounds

Parishioners, their families and friends are invited to take part in the annual Beating the Bounds on Rogation Sunday, 13th May 2012, starting at 12.00. More details will be available at www.rppc.org.uk by early May.

Police Notice – e-mail Scam



We are aware that an email entitled **Population Census: a message to everyone - act now** is being circulated, allegedly in the name of National Statistician, Jil Matheson. This e-mail demands individuals provide further personal information, supposedly for the Census and threatens fines for non-compliance.

This e-mail is a scam and a hoax. It has no connection whatsoever with the National Statistician, the 2011 Census or the Office for National Statistics. We believe the links in the e-mail could download malware to any computer where the user clicks on the links. This could put your personal data, including financial information, at risk.

Anyone receiving this, or similar emails, should delete them, not open any links and certainly not provide any information.

For more information on how to protect yourself from this type of threat, please see www.getsafeonline.org

If you wish to, please report receipt of any such suspicious emails to www.actionfraud.org.uk

ONS takes the protection of personal census information extremely seriously. Collection of census data was completed last year and no further requests will be forthcoming from the Office for National Statistics relating to the 2011 Census.

Sonning Common Library

I was disappointed, but not surprised, to learn how few Peppard residents use the library in Sonning Common. We continue to run the library as normal, as no date has yet been finalised to implement the Council's decision to reduce our staffing to 50%. There will be special children's storytimes coming up on Saturdays in the next 3 months - keep an eye on notice boards for further information. Our Easter closing sometimes catches people out: we will be closed

from Friday, 6th April to Tuesday, 10th April inclusive, opening again on Wednesday, 11th April at 14.00.

Rosemary Dunstan, Library Manager

Library to Lose Half Its Staff

Sonning Common Library is to see its staff budget cut by half, following a decision by Oxfordshire County Council in December after a four-month public consultation into the future of the county's 43 libraries. The council wants to reduce costs and is expecting volunteers to help staff its libraries to make up for the reduction in professional staff. The changes are to be phased in over three years.



Our library has been placed in the bottom category of provision in the county. Five libraries, some with a smaller population than that of this area, will be staffed by two-thirds paid workers to one-third volunteers. The remaining 22 core libraries will receive full funding and be exclusively staffed by professional employees. The inequality of the council's decision has angered campaigners. The Friends group had campaigned for budgetary cuts to be shared among all libraries in Oxfordshire. Or, if the county council was unwilling to share the cuts, to move us to the second tier of provision where we would receive more professional staff.

Councillor Keith Mitchell, the leader of OCC, said: 'We have recognised the strength of public feeling about libraries and have come up with a compromise which we believe is viable. The Library Service will now work with the public to establish a sustainable future for each of the 21 libraries where volunteers will contribute towards staffing levels.'

Ros Varnes, Friends of the Library

Litter Blitz

The Annual Parish Litter Blitz will be held on Saturday, 17th March starting at 10.00. This is an opportunity for everyone to get involved to help keep our village tidy. Hi-Viz jackets and plastic sacks will be available from a Parish Councillor at Stoke Row Road/Gallowstree Common junction, outside Peppard School on the Top Common or at the Unicorn public house.

<p>Make a bee line to BRAMBLES for Fresh Flowers, Bouquets, Plants and more 0118 9721240</p>			<p>Wedding flowers Funeral tributes Opposite village hall car park exit 42 Wood Lane Sonning Common</p>
--	---	---	---

Our Churches

All Saints' Church of England

www.allsaintspeppard.org.uk

Rector: Revd Canon Graham Foulis Brown 0118 972 3987
Asst. Priest: Revd Barry Olsen 0118 924 2812
Churchwardens: Adrienne Heriot 01491 629254
Toby Greenwood 0118 972 2861

The Chair of Governors asked me to speak to the Governors of Peppard School about the distinctiveness of a Church School. A Christian website for school governors makes nineteen suggestions beginning with 'A Christian school will seek to bring glory to God in all it does.'

But I thought back to a helpful address given by Bishop Stephen Cottrell when he was in Reading. He was of the opinion that parents send their children to Church schools, not just because of good academic results, but because they offer something more, i.e. values and an ethos rooted in belief about God.

He went on to make four points.

First, Church schools nurture a distinctive understanding of what it means to be human. There is a spiritual dimension to being human.

Secondly, Church schools can tell the story of God's transforming love as revealed in Jesus Christ. We seek to do this in our collective worship in school and church.

Thirdly, Church schools embody God's service to all in the community. They have a long history of doing this.

Fourthly, Church schools witness to the hospitality of God. The Church's concern is with breaking down barriers. 'The Church's role is to live out this scandalous inclusivity.' Bishop Stephen said that Church schools appeal to those of other faiths because they are serious about God, and they embody the hospitality of God.

After our good OFSTED Report we at Peppard School were delighted to receive

a 'good' report following the Statutory Inspection of Anglican Schools. As Foundation Governors, Ian Heriot and I are committed, in partnership with our new Headteacher and the staff, to working for 'outstanding' at our next inspection.

Barry Olsen

Anniversary

To celebrate the 350th anniversary of the 1662 Book of Common Prayer a special service of Evening Prayer will be held on 20th May at 18.30. The preacher is Revd John Paton MA, precentor and cathedral chaplain at Christ Church Oxford. The Prayer Book is used regularly at All Saints' for Evening Prayer each week and for Morning Prayer, usually on the first Sunday of each month.

Looking Ahead

On 18th March **Mothering Sunday** will be celebrated at the 10.30 Family Communion Service when the children will be taking part.

The **Annual Parochial Church Meeting** will take place on Tuesday, 24th April at 20.00.

For the **Peppard Revels** there will be an interdenominational service on the Common on Sunday, 3rd June at 11.30 when all will be most welcome.

Christian Unity

Visitors from local congregations joined us for a service for the week of Christian Unity at the end of January. The service of Evening Prayer boasted a variety of music and Bishop John Bone, formerly Bishop of Reading, gave an inspiring

sermon on the subject of change using a text from Corinthians 'We shall all be changed'. He used a variety of examples to illustrate how Christians must come together to share work and resources to share in the good news of the Father's love.

Best Attendance

Recently Lily Shanagher was presented with a copy of the Choristers' Companion in recognition of the fact that she recorded the best attendance of the junior choristers for 2011. Well done Lily.

Adrienne Heriot

Lent Lunch

Come along on Monday, 19th March at 13.00 to Christ The King, Sedgewell Road, Sonning Common and join us for bread and homemade vegetable soup, fruit, tea and coffee. You will be asked to give a donation to Feed The Children.



Sue Nickson checking the soup!

Just give Sue Nickson a call on 0118 972 4520 to let her know you will be coming. You will be very welcome!

Sue Hinton

PEMBROKE GLASS

UNIT 12, MANOR FARM, PEPPARD COMMON, RG9 5LA
YOUR LOCAL GLASS AND GLAZING COMPANY
CALL FOR ADVICE & FREE QUOTATION

We also supply & install or supply only all types of windows, doors and conservatories in UPVC, hardwood, aluminium, etc.
Tel: 01491 629901 Fax: 01491 629904

BONDRIGHT ROOFING SERVICES

DOMESTIC, COMMERCIAL & INDUSTRIAL ROOFING
& EXTERIOR MAINTENANCE

Your Local Roofing Company

TEL: 01491 579659

www.bondrightroofing.co.uk



A.B. WALKER

& SON LIMITED

FUNERAL DIRECTORS. EST.1826

Independent 5th Generation Family Run
Funeral Directors and Monumental Masons

- 24 Hour assistance from 4 offices with parking
- Competitively priced modern and traditional options
- Pre-paid funeral plans & funeral flowers on-line
- Stone memorials & Grave tending service

Henley-on-Thames 01491 413434
Reading 0118 957 3650

www.abwalker.co.uk



St Michael's Catholic Church

Revd Robert Devaney 0118 972 3418
 Revd Francis Andrews 0118 972 2354
 e-mail: stmichaels.rc@hotmail.co.uk

Unholy Scripture

I remember once having a discussion about Scripture with a fellow theology student. He was an Australian and usually well endowed with the occasional nugget of wisdom. Something he said really stuck in my mind and wonderfully exposes the flaws we can make when trying to justify ourselves. The piece of local wisdom held within the Australian farming community, apparently, suggests that if your neighbour starts quoting scripture to you, then you had better start branding your cattle! And it doesn't take long to realise the truth

contained in that short statement; Holy Scripture really can become Unholy Scripture. Centuries of a bloodstained and tortured history are testament to people of faith and conviction using their holy books to justify personal prejudices across all shades of the religious spectrum. Once a body of scripture is deemed to be 'written' by God, or by men under divine inspiration, then the abuse and misuse of such is never far away.

Our history of heresy, counter-heresy, Reformation, Counter-Reformation has exposed the flaw of putting our faith in the inspired written word alone. Ultimately, if we are going to put our lives 'on the line' in the cause of what we believe in, then what we believe in must have a very special authority. So, if we

are to call ourselves Christian that authority has to originate from Jesus the Christ. In other words, we put our whole faith in the person of Jesus Christ Himself; and the word 'person' is all important here. When we put our lives on the line and follow the one who is fully divine and fully human then we will find our authority within our core, since this is where Jesus truly dwells.

Only when we come to respect the person within us will we respect ourselves, and when we respect ourselves we will respect others. True Christian faith ensures that the words of scripture will always be subject to the Christ 'branded' into our hearts. So if we let Christ authenticate scripture it will always be holy and always be a cause for joy; not only for ourselves but for our neighbour also.

Father Robert Delaney

The Women's World Day of Prayer

This year it is St Michael's turn to host the service for local churches. The

women of Malaysia have prepared the service and their theme is *Let Justice Prevail*. Do come and join us on Friday, 2nd March at 14.00-15.00. Our speaker will be Ann Pawson who is Indian Ma-

laysian and lives locally. Refreshments will be available after the service and assistance with travel can be arranged.

Shirley Rixon, 0118 9723982



Revd Barry Kirk
 0118 972 4519
 www.springwater.org.uk

gether briefly over 25 years ago and had not met since. He had been touched by the message that he had just heard and mentioned that he was about to start his second Alpha course...

Back to Peppard and Springwater, where a few weeks ago we had a reunion dinner for the people who had attended the two Alpha courses held during 2011. Alpha is an informal, non-threatening course for those who want to know and understand more about the Christian faith and the meaning of life, and it was so encouraging to hear from the participants how the course had led them on to enquiring further about the Bible and the Gospel message. Alpha really took off in the 1990s and so far 17 million people have taken the course. There are now

55,000 courses in 166 countries. Impressive numbers – but sometimes I think we get lost in big numbers, rather like the billions and trillions of pounds/euros/dollars we see in the headlines these days.

This brings me back to that little country church on the east coast of Sweden where Olle was chatting to my sister-in-law. This same Olle was a colleague of mine when I worked in Sweden 35 years ago. He was a young man then and sometimes we would chat about 'the meaning of life' as we drove through mile after endless mile of pine forest. While I rejoice in the international success of the Alpha project, this one personal reconnection with my past gives me the greater joy. I shall certainly contact Olle on my next visit to Sweden.

Chris Mills

GRAHAM'S MAINTENANCE

Painting & Decorating - Fascias & Soffits
 Door & Window Fitting - Plumbing
 Fitted Bathrooms - Floor & Wall Tiling - Fencing & Decking
 Wood & Laminate Flooring - Sheds Supplied & Fitted
 Garden Maintenance - Guttering & Flat Roofing, etc. ...
Free estimates 0118 972 3114



The Maids CLEAN HOMES

PROFESSIONAL DOMESTIC CLEANING
 ESTABLISHED 1996 FULLY INSURED
 08450 540 520
 www.themaids.org.uk

SPRUCE MAINTENANCE SERVICE

For all your property maintenance requirements including, decorating inside and out, paper hanging, wall & floor tiling, carpentry, hand painted kitchens and furniture, water damaged ceilings and Insurance work.

ROB SMITH

TEL: 0118 972 4560

Smoothing Common Beauty

Waxing—Manicure—Pedicure—Facials
 Eyelash Perming & Tinting—Eyebrow Shaping
 Bali Sun Airbrush Tanning

Gift vouchers available for all treatments

Tel: 01189 723059

Susan Duke ITEC

Clubs and Societies

1st Peppard Guides

We have just started our Spring Term and have an exciting time planned with our own talent show, fundraising for sport relief and Thinking Day celebrations. Our numbers have swelled since our opening in May 2011 and we are now full to capacity with a long waiting list.



We thought we would share a photo of us outside Buckingham Palace:

Jo Waugh, squirreljo@yahoo.ie

Sonning Common & Peppard Table Tennis Club

We have a couple of months of the season to go in the Reading & District League. The A team appears safe in Division 1 and should avoid relegation. In Division 2 the B team has improved and are now in fourth place. Alas, the promoted C team is set to return to Division 3.

The D team has now dropped into the relegation places. They need the boost of confidence a win will bring to turn things around. In Division 5, the E team is safely in mid-table, largely thanks to the efforts of Tony House, Dave Aust and Mike Casserely; in Division 6, the F team is also mid-table.

Finally the club were sad to hear of the recent death of coach, Alan Dines, who had been instrumental in establishing our

junior sessions, getting teams into the Reading Youth Division and bringing forward a number of talented youngsters, Danny Dockree and Jonathan Abbott to name just two. Alan will be sadly missed. John Taylor is to carry on with the Monday evening sessions from 17.00 -18.00 for the immediate future.

Nigel Maltby

Peppard WI

We had a very good year culminating in our Christmas Party which was enjoyed by all, with wonderful entertainment from Nottakwire and a delicious tea.

We have our AGM in March where we vote for committee members and a President for the coming year. To add to our enjoyment on that day we have Laura Gagadeen coming to tell us a little about Greys Court.

In April we have Gillian Cane making a return visit to us. This time her talk is *It's a Girl's Life in the Army*. She was one of the first ladies to attend Sandhurst College. It must have been fun. She is a most interesting speaker and we are all looking forward to hearing her again.

In May we have our Resolutions Meeting getting ready for the National AGM in the Albert Hall.

We are still finalising our programme for next year but I will let you know what we have in store in the next edition of *Peppard News*. Our aim is to have fun at our meetings. Watch out for our posters. Don't forget we meet on the 2nd Wednesday of each month at Peppard War Memorial Hall at 14.30.

President Di Ducker

Peppard Bowls Club

We will be opening our green to visitors on Sunday 15th April from 14.00 when you are invited to join us from 14.00-

15.00 with a chance to try out your bowls skills. Please remember to wear flat shoes if you wish to play.

A full fixture list of friendly and league matches, competitions, practice sessions and social events will start from the end of April. We are a friendly club and glad to welcome anyone who is interested to try out the game. For more details visit our website at www.peppardbowls.com.

Betty Freeman

1st Sonning Common Cubs

The Pack has achieved a double in two recent chess competitions. Firstly, they won the *Henley Standard* South Chilterns District Chess Trophy, followed the week after by supplying the three cubs to represent the District at the Oxfordshire County Cub Chess Competition, winning by a narrow margin.



Chess winners

Akela Penny Edwards, said she is very proud of the achievement made by all the boys who represented the group at the District event, winning the trophy for the second year running. This is the sixth time that the group has won it, double the number of times of their closest rivals. Further details are available from Penny Edwards, Akela. 0118 972 4282 mog-gie40minor@btinternet.com

THAMES VALLEY ANIMAL WELFARE

Charity No: 900616

Has many beautiful and affectionate cats looking for loving homes. If you can give a home to any of them, please call: 01189 721871/01494 484527
Or visit our website www.tvaw.org.uk

Jamie Miller
Wall and Floor Tiling Specialist est. 1985

Supply and fit
Natural stone . Porcelain . Ceramic Under floor heating
to arrange a free consultation and quotation.
Call Jamie on 07771 821 596 or Henley 01491 628883

Mike Farina Auto Services

Servicing, repairs and welding for all makes of vehicles

21 Sedgewell Road, Sonning Common
Telephone: 0118 972 4036
MOT tests arranged

Rotherfield Peppard Educational Trust

Fund for support of educational activities

The Trust supports educational activities undertaken by under twenty-fives from Peppard. It can help with purchase of books, educational visits, special projects, and the like. If you may be eligible, or know of others who may wish to apply, please give us a call.

Robin Howles (0118 972 3528) or Sylvia Overbury (01491 628 245)

Peppard Lunch Club

The club has had another successful year. Our members are seniors from the village and surrounding area; each month they enjoy an excellent meal at very modest cost. Just as important, we offer a great social occasion especially appreciated by members living on their own, to chat together in the comfortable surroundings of the War Memorial Hall.

Our final lunch for 2011 was a special Christmas one with traditional roast turkey and all the trimmings, wine, Christmas pudding and mince pies. To add to the festive atmosphere we had Christmas crackers, a free raffle and a choir from Peppard School singing Christmas carols.

Lunches continue on the 3rd Wednesday of each month at the War Memorial Hall, except that on 16th May we are cruising on the Thames with an extensive afternoon tea instead of lunch. For more information please contact me on 0118 972 2808.

Sally Longhurst

Peppard Cricket Club

The prospects for 2012 are looking bright with both XIs requiring new captains and the introduction of a junior section at the start of the season. Last August those passing the Common early on Saturday mornings may have seen a full car park outside the Pavilion and the sight of youngsters enjoying the sunshine and playing cricket. These were a few 'taster' sessions run by the cricket club in response to demand for junior cricket. As an experiment it proved hugely enjoyable and the 20 – 30 children who turned up voted it a success. We are looking forward to these sessions beginning again.

It will not be long before the pre-season work will begin and the club will spring back into life again.

Ronnie Brock, Chairman

Club SC

The club is becoming very popular. We currently have an average of 50 young people across both Wednesday (10 to 13 years) and Thursday (14 to 16 years) evenings attending weekly, with more young people joining each week. Pool, Football and Table Tennis competitions are being organised and other activities are in the pipeline. An X box has been donated to the club which is proving very popular. Two of our members are currently participating in the Duke of Edinburgh awards and they are completing part of their set tasks by working at the club on a Wednesday evening, and fund raising for the club.

Several Volunteers have offered their time and the club is looking to build up a bank of volunteers which will enable the club to open 50 weeks each year. We are always looking for donations and funding.

Councillor Carol Viney, OCC

Wyfold RDA

Our Christmas Celebration was very successful and enjoyed by all, especially the pony, Magic, who transported Father Christmas in his carriage. He really rises to the occasion and looks splendid all dressed up and with his carriage decorated. This year we also had Teddy dressed as a reindeer and he proved to



be a good attraction. The children really enjoyed stroking him and he loves to be admired!

Adrienne Heriot

Rotherfield United FC

We train our Under 5s each Saturday morning at Bishopswood Sports Ground, Gallowstree Common, from 09.30-10.30. The training is focused on playing a number of fun football related games to introduce boys and girls to football and playing sport in an organised environment. The sessions are operated by licensed FA Coaches who hold the appropriate first aid qualification and are CRB checked. As an additional benefit for parents the club now has a Coffee Shop offering hot and cold refreshments and snacks. For further details please visit the club's website at www.rotherfieldfc.com. If you have any questions please contact me via email andy.davies@rotherfieldfc.com or on 07900 697513

Our new home at Bishopswood offers the club the ideal opportunity to realise its potential and develop excellent facilities in the future. Whilst it is sad to leave the old ground, we have outgrown it and cannot accommodate the 20 teams that now play for the club. The relocation of Peppard Primary School effectively stopped us being able to expand on the site and we had to look elsewhere, but it was important to stay close to our origins. We will continue to allow other clubs and teams to use the facility, including baseball and tennis, as our aim is to build a thriving sporting facility. The club's longer term plans include building a new club house and an all weather pitch.

The club will be holding a public meeting on Monday, 27th February at 19.30 in Sonning Common Village Hall to present and discuss its plans for the future.

Andy Davies

Computer Problems?

Is your PC misbehaving? Fault Diagnosis, Maintenance & Upgrades, Broadband, Networking, Data Recovery & Migration, Virus Cleaning, and much more.

Phone Robin Piercey at Influential Computers on 01491 680036, or visit www.influentialcomputers.com.



Andrew Page Oak
... for everything oak
www.andrewpageoak.co.uk
01491 828207



Everything you need for
your pets and wild birds

Food & Accessories

Friendly personal service with lots of parking

Southlea House, Blounts Court Road

Sonning Common

Tel: 0118 924 2747

(Just at the top of Gravel Hill)

Peppard Diary

MARCH	
Fri 2	Women's World Day of Prayer/St Michael's Ch/14.00-15.00
Sat 3	Kingwood & Peppard Comn Vol Grp/workparty/01491 628049
Sun 4	Circle Dancing/Christ the King/15.30-17.00
Mon 5	Mobile Library/Peppard School/11.45-11.55 FISH Garden Centre/Details FISH Office
Fri 9	FOPS Quiz/ Mem Hall/19.00/01491 628354 for tickets
Mon 12	RPPC Meeting 19.30/Planning 21.30/Pavilion
Tue 13	Hort Soc/Mem Hall/19.30/Oxon Butterflies & Orchids
Wed 14	WI AGM/Mem Hall/14.30/Greys Court House & Gardens
Thu 15	FISH Pub Lunch/11.30/Details FISH Office
Sat 17	Annual Parish Litter Blitz/10.00
Mon 19	Mobile Library/Peppard School/11.45-11.55 Feed/Children Lent Lunch/Christ the King/13.00/01189724520
Wed 21	Greys Court opens Peppard Lunch Club/Mem Hall/12.00/01189722808
Fri 23	Revels Film Club/Madness of King George/Mem Hall/19.15
Wed 28	Peppard Community Plan Open Forum/Pavilion/19.30
Fri 30	Peppard School Term ends
Sat 31	RPPC Planning/Pavilion/10.00 Hort Soc Spring Flower Show/CofE School/14.30-17.00 Carling's Orchard Dedication
APRIL	
Sun 1	Circle Dancing/Christ the King/15.30-17.00
Mon 2	Mobile Library/Peppard School/11.45-11.55 FISH Garden Centre/Details FISH Office
Wed 4	Greys Crt Easter Egg Hunt/10.00-12.00/01494755564 Kingwood & Peppard Comn Vol Group/Supper and Quiz
Thu 5	Greys Crt Easter Egg Hunt/10.00-12.00/01494755564
Fri 6	Sonning Common Library closes for Easter
Sat 7	Kingwood & Peppard Comn Vol Group/ Spec Family Event
Tue 10	Hort Soc/Mem Hall/19.30-21.00/Begonias
Wed 11	Sonning Common Library opens 14.00 WI/It's a Girl's Life in the Army/Mem Hall/14.30
Sun 15	Peppard Bowls Club opens/14.00
Mon 16	Peppard School term starts Mobile Library/Peppard School/11.45-11.55 RPPC Meeting 19.30/Planning 21.30/Pavilion
Wed 18	Peppard Lunch Club/Mem Hall/12.00/0118 9722808
Thu 19	FISH Pub Lunch/11.30/Details FISH Office SC Soc/SC Library/Talk on Beekeeping/19.30
Sat 21	Annual Parish Meeting/Mem Hall/10.00
Sun 22	On Your Bike/SC Primary Sch/10.30/0118 9724487
Fri 27	Greys Court/Blooming Bluebells/0844 2491895
Sat 28	RPPC Planning/Pavilion/10.00 Greys Court/Blooming Bluebells/0844 2491895
Mon 30	Mobile Library/Peppard School/11.45-11.55
MAY	
Sat 5	Kingwood & Peppard Vol Grp/workparty/01491 628049
Sun 6	Circle Dancing/Christ the King/15.30-17.00
Mon 7	FISH Garden Centre/Details FISH Office
Wed 9	WI/Resolutions Meeting/Mem Hall/14.30
Fri 11	Greys Court/A Gardener's Garden/18.30/0844 2491895
Sun 13	Beating the Bounds/12.00/ www.rppc.org.uk
Mon 14	Mobile Library/Peppard School/11.45-11.55 RPPC Meeting/19.30/Planning 21.30/Pavilion
Wed 16	Peppard Lunch Club Thames Cruise/0118 9722808
Thu 17	FISH Pub Lunch/11.30/Details FISH Office
Fri 25	Greys Court/A Gardener's Garden/18.30/0844 2491895
Sat 26	RPPC Planning/Pavilion/10.00
Mon 28	Mobile Library/Peppard School/11.45-11.55
FISH Office: 0118 9723986 (Mon-Fri, 09.30-11.30)	
SC & Peppard Table Tennis Club/Mem Hall/Juniors – Mon 17.00/0118 9463191	
Rotherfield United Football Club/U5s/Sat.09.30-10.30	

BROWN BIN COLLECTION SERVICE

Month	March		April		May		
Date	7 th	*21 st	4 th	18 th	2 nd	16 th	30 th
Brown bin	✓	✓	✓	✓	✓	✓	✓
Garden waste	✓	✓	✓	✓	✓	✓	✓

For GREEN (recycling) and GREY (non-recycling) bins please see SODC Calendars, which have been amended for some properties in the Parish. Food waste will be collected weekly. Phone: 03000 610610, or see www.southoxon.gov.uk or www.PeppardNews.co.uk

* Extra garden waste will be collected from brown bin customers

CHURCH SERVICES

Sunday Services at All Saints'	MARCH				APRIL					MAY				NOTES
	4	11	18	25	1	8	15	22	29	6	13	20	27	
09.00 Communion	✓	✓	✓	✓	✓	✓	✓	✓	✓	✓	✓	✓	✓	†Festal Evensong §Benefice Sung Eucharist ¥Evening Prayer to mark 350th Anniversary of the Book of Common Prayer (1662)
10.30 Communion (sung)		✓	✓		✓	✓			✓§		✓		✓	
10.30 Matins	✓							✓		✓				
10.30 Family Service				✓			✓					✓		
10.30 Sunday School		✓				✓					✓			
18.30 Evensong	✓	✓	✓	✓	✓	✓+	✓	✓	✓	✓	✓	✓¥	✓+	

Special Services	
18th March – Mothering Sunday	6th April Good Friday
8th April Easter Sunday	10.00 Morning Prayer and Litany
27th May Whit Sunday	14.00 Devotional Hour

Sunday Services at Springwater (Peppard Congregational Church) Family Service: 10.30 - 11.45 ♦ Sunday School 10.30 - 11.30	Mass at St Michael's Roman Catholic Church ♦Monday-Friday 09.00♦ Saturday 17.30 ♦ Sunday 09.00 & 10.30
--	---

	<h2>Trade Counter</h2> Bishopsland Farm, Peppard Road, Dunsden, Reading RG4 9NR Tel: 0118 972 2028 Fax: 0118 972 4559
--	--