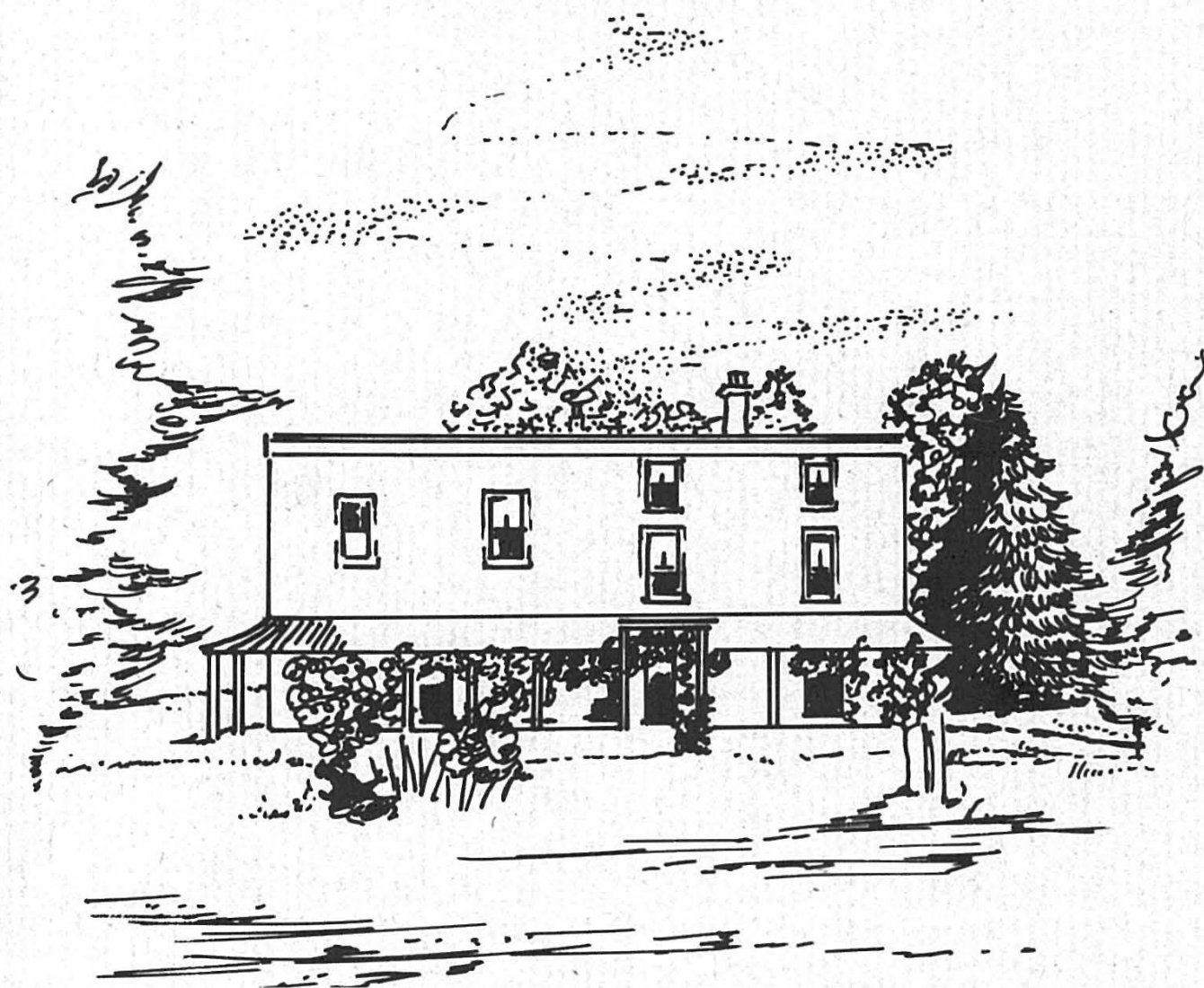


# **RUISLIP**

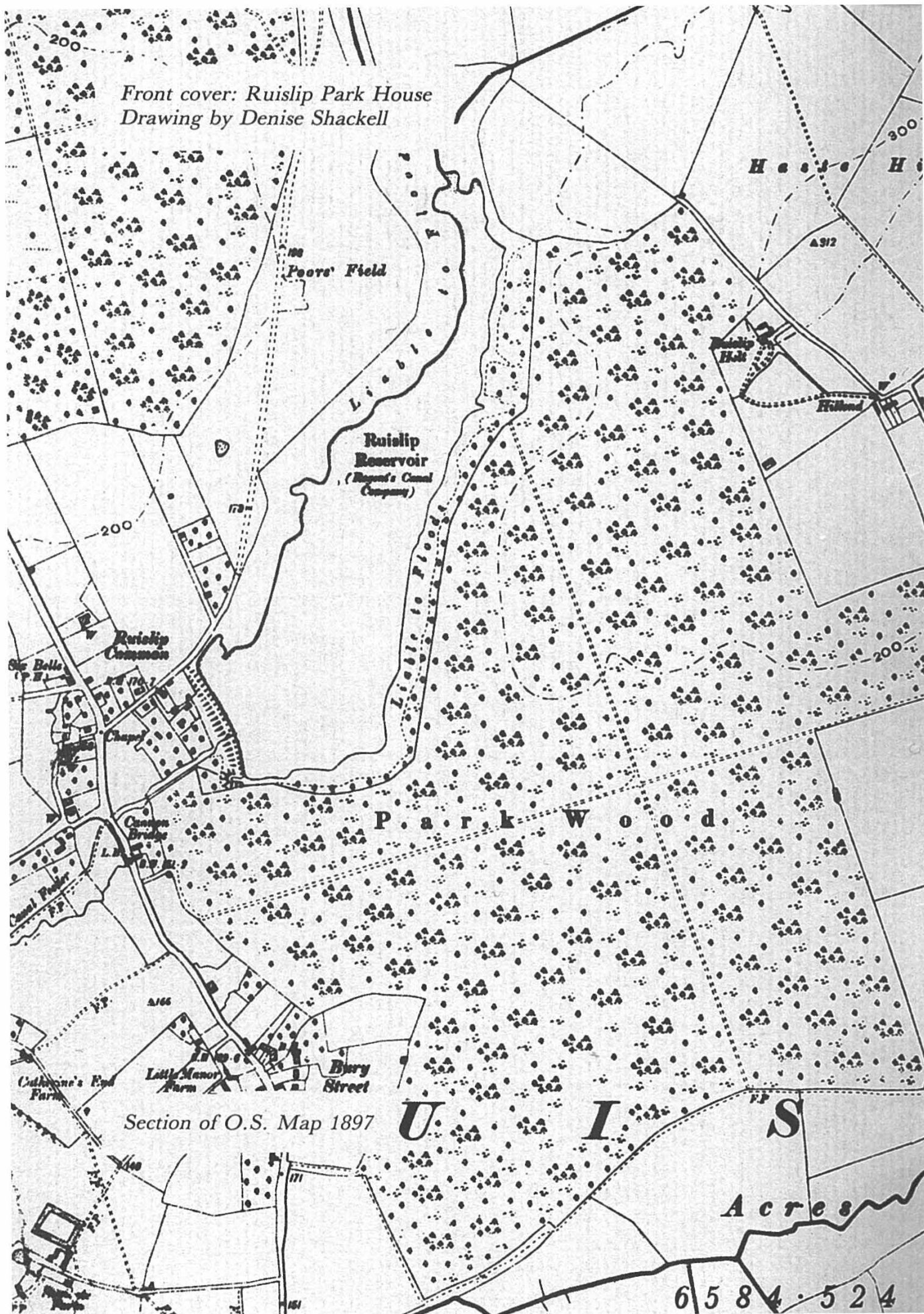
## **around**

# **1900**



Published by the Ruislip Northwood and Eastcote  
Local History Research Group.

Front cover: Ruislip Park House  
Drawing by Denise Shackell



# RUISLIP around 1900

## CONTENTS

Introduction	<i>Eileen M. Bowlt</i>	2
The Log Books of Ruislip National Schools	<i>Celia Cartwright</i>	4
Memories of Childhood	<i>Denise Shackell</i>	16
Field End Villas, Eastcote	<i>Karen Spink</i>	26
Ruislip Cottagers' Allotments Charity	<i>Robert Steel</i>	35
The Park House Estate, Ruislip	<i>Valery Cowley</i>	41
The Age of the Train	<i>Harry Pellow</i>	51
Local Crime and Punishment, 1899	<i>Ron Hudson</i>	57

# INTRODUCTION

The Ruislip W.E.A. local history class ran from 1979-1982. The three year course covered the history of the former Parish of Ruislip which included Eastcote and Northwood, from the earliest times to the Second World War.

The results of some of the projects undertaken by students were presented to a meeting of the Ruislip Northwood and Eastcote Local History Society in January 1982, and this work is published here, illustrated with maps and photographs. The programme was co-ordinated by Colleen Cox, whose introductions are also included.

The work relates to the 19th and 20th centuries. It involved interviewing many elderly residents, reading through old copies of local papers, street directories and guide books, and looking at 19th century Census returns and Rate Books, and visiting organisations such as railway museums and the Charity Commissioners.

This book is published by the Ruislip Northwood and Eastcote Local History Research Group, set up to continue the work begun by members of the original W.E.A. class to provide a focus for continued interest in the locality. Proceeds from sales of the book will go towards financing further research and its publication.

Already much of the practical work done by all the students should prove useful to members of the public seeking information, and this has been lodged in the Local History Room at Manor Farm Library, Ruislip.

The Enclosure Map has been copied and a key provided, showing the owners of all houses and land in 1806. The Census Returns for 1851, 1861 and 1871 have been indexed, with a separate card for each person named. These should prove invaluable to people researching their family origins in the area. News of events in Ruislip, advertisements for property sales, work opportunities, entertainments, crime stories and obituary notices have been abstracted from local papers from

1871-1901 and carefully filed.

This is the kind of work we plan to continue. Meantime, we should like to take the opportunity here to record our gratitude for the help given to us by many local people during the course of preparing this book — the residents who have patiently recalled the past, and who have given permission to pass on their reminiscences, the Managers and Headmaster of Bishop Winnington-Ingram School for the loan of the school log books, Miss Mary Pearce and her staff at Uxbridge Library for access to sources in their care, and to Ruislip Library and Helen Hoare for permission to reproduce photographs.

*Eileen M. Bowlt*  
W.E.A. Course Tutor